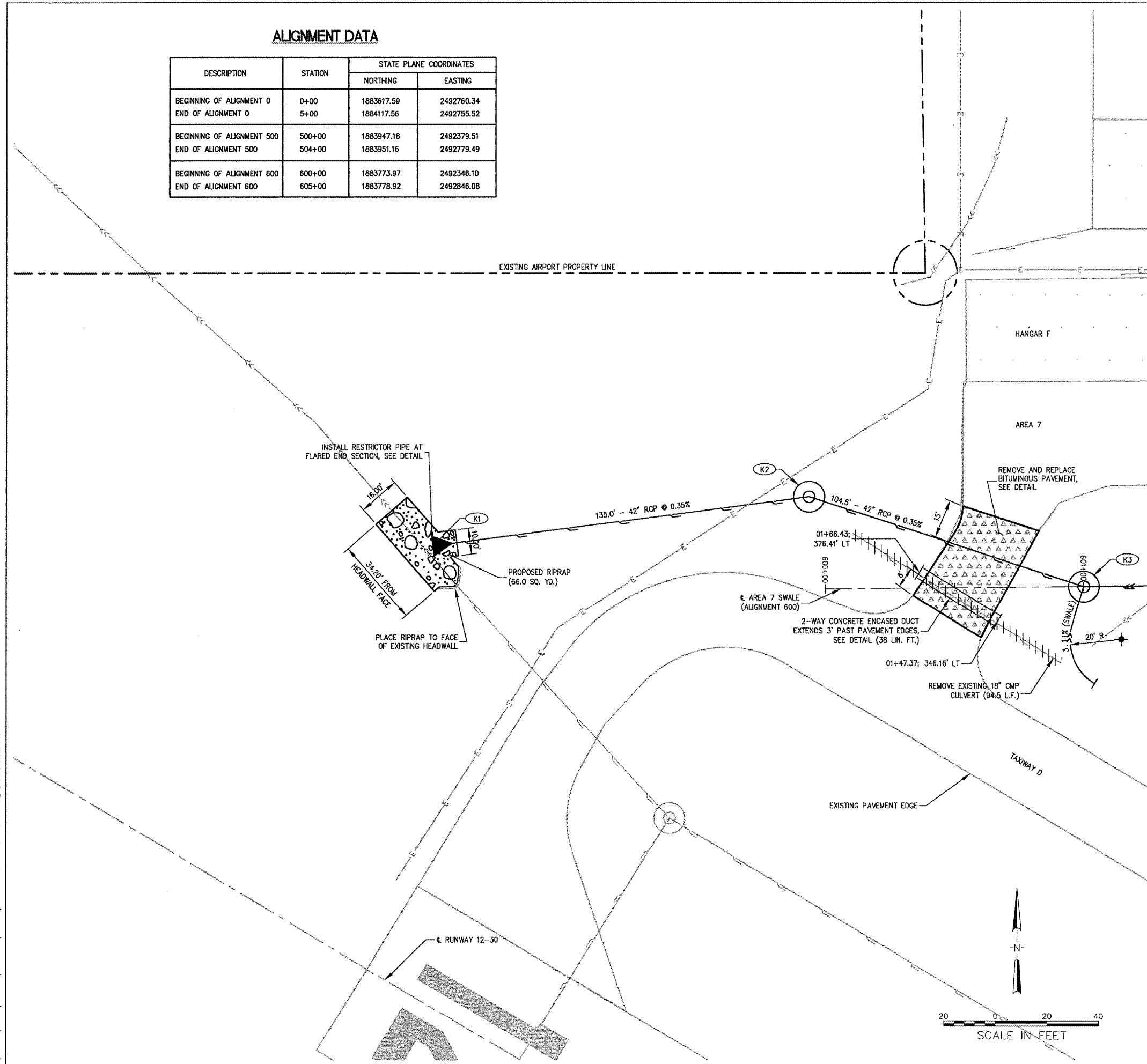


**ALIGNMENT DATA**

DESCRIPTION	STATION	STATE PLANE COORDINATES	
		NORTHING	EASTING
BEGINNING OF ALIGNMENT 0	0+00	1883617.59	2492760.34
END OF ALIGNMENT 0	5+00	1884117.56	2492755.52
BEGINNING OF ALIGNMENT 500	500+00	1883947.16	2492379.51
END OF ALIGNMENT 500	504+00	1883951.16	2492779.49
BEGINNING OF ALIGNMENT 600	600+00	1883773.97	2492346.10
END OF ALIGNMENT 600	605+00	1883778.92	2492846.08

EXISTING AIRPORT PROPERTY LINE

MATCH LINE

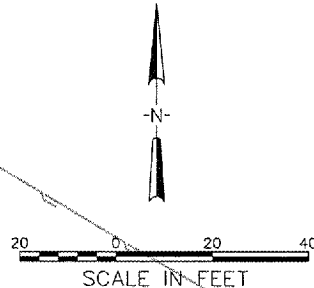


**LEGEND**

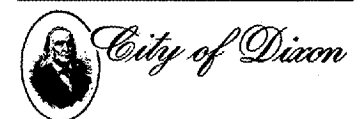
- EXISTING STORM SEWER
- EXISTING SWALE
- EXISTING FENCE
- EXISTING UNDERGROUND ELECTRIC
- ⊙ EXISTING STORM SEWER MANHOLE
- PROPOSED SWALE
- PROPOSED STORM SEWER
- PROPOSED TRENCH DRAIN
- PROPOSED UNDERDRAIN
- ⊙ PROPOSED STORM SEWER MANHOLE
- ⊙ PROPOSED FLARED END SECTION
- ⊙ PROPOSED FLARED END SECTION
- ⊙ PROPOSED UNDERDRAIN CLEANOUT
- △ REMOVE AND REPLACE BITUMINOUS PAVEMENT
- RIPRAP

**NOTES**

- FOR ADDITIONAL STORM SEWER, UNDERDRAIN, AND TRENCH DRAIN INFORMATION, SEE SCHEDULES.
- CONTRACTOR IS REQUIRED TO FIELD VERIFY EXISTING UTILITY LOCATIONS.
- FOR ADDITIONAL INFORMATION ON REMOVAL AND REPLACEMENT OF BITUMINOUS PAVEMENT, SEE TYPICAL SECTION.
- ALIGNMENT IS BASED ON STATE PLANE COORDINATES. SEE STAKING PLAN FOR ALIGNMENT DATA.
- EXISTING BITUMINOUS PAVEMENT, UNDERCUT, STORM SEWER RELATED ITEMS TO BE REMOVED IS TO BE DISPOSED OF AT AN OFFSITE LOCATION, SEE SPECIAL PROVISIONS.
- FOR THICKNESS OF PAVEMENT REMOVAL OF EXISTING BITUMINOUS PAVEMENTS SEE SOIL BORINGS.



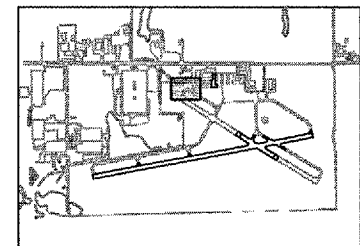
HANSON PROFESSIONAL SERVICES INC.  
 815 Commerce Drive Suite 200  
 Oak Brook, Illinois 60523  
 Telephone: 630.990.3800  
 Fax: 630.990.3801



CITY OF DIXON, ILLINOIS  
 Post Office Box 386  
 Dixon, Illinois 61021  
 Telephone: 815.288.1485

DIXON MUNICIPAL AIRPORT  
 CHARLES R. WALGREEN FIELD  
 OVERLAY RUNWAY 8-26,  
 REHABILITATE HANGAR PAVEMENTS

AIP PROJECT NO. 3-17-0036-B5  
 IDA PROJECT NO. C73-3313



KEY PLAN

No.	Drawing Issue Description	Date	By

Date  
 12 MARCH 2004  
 Sheet Title

**PLAN - WEST HANGAR AREA**

84303B8004/C8005  
 Project Number

KLK	01/05/04
Layout By	Date
TMM	01/09/04
Designed By	Date
RMH	03/05/04
Reviewed By	Date
KLK	---
Drawn By	Sheet No.

P:\03\JOBS\120943\03B8004\DRAWINGS\SWETS\50-PLAN-WEST-AREALING\MAR 12, 2004 8:47AM RJT