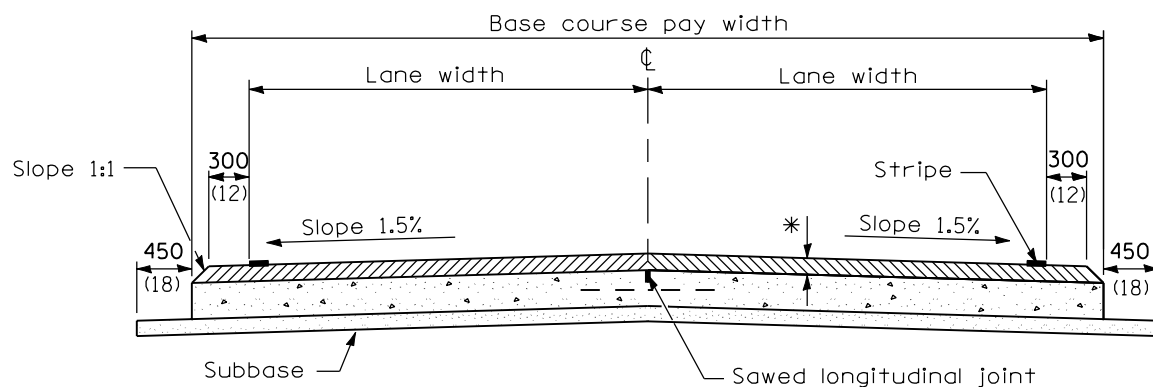
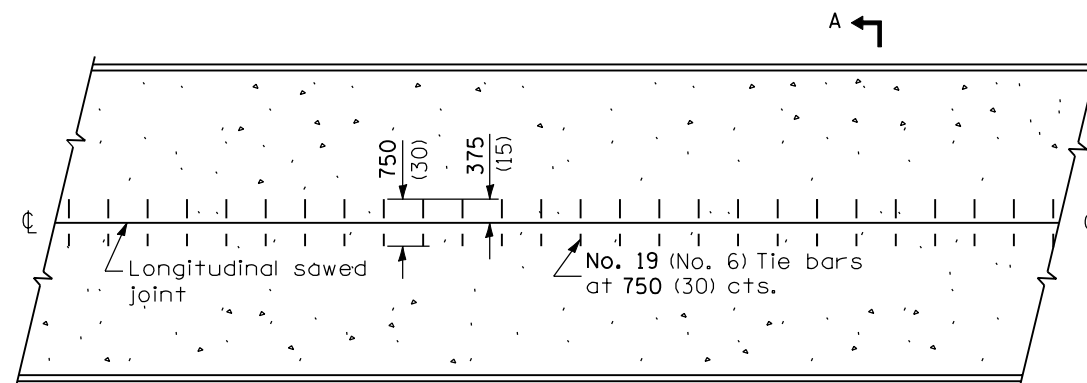


\* Bituminous concrete binder and surface courses

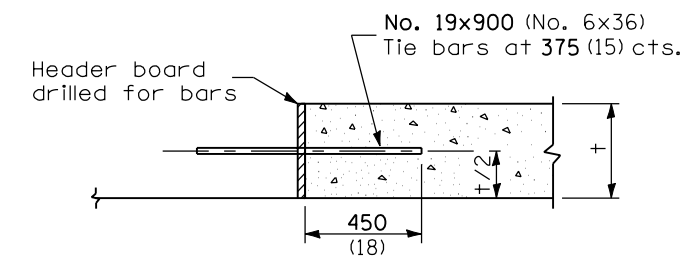
**SECTION A-A**  
(TYPICAL 2 LANE WITH SHOULDERS)



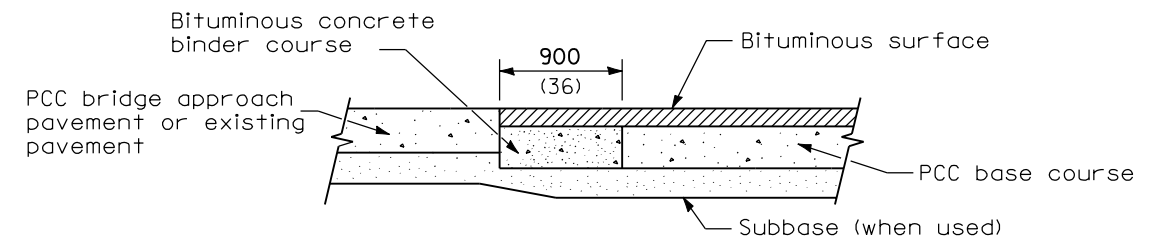
**ALTERNATE SECTION A-A**  
(TYPICAL 2 LANE WITH SHOULDERS)



**PLAN**



**TRANSVERSE CONSTRUCTION JOINT**



**LONGITUDINAL SECTION SHOWING  
CONSTRUCTION ADJACENT  
TO PCC BRIDGE APPROACH PAVEMENT  
OR EXISTING PAVEMENT**

**GENERAL NOTES**

The longitudinal sawed joint shall be as detailed on Standard 420001 except the sawed groove does not require sealing.

All dimensions are in millimeters (inches) unless otherwise shown.

DATE	REVISIONS
1-1-04	Added Transverse const. joint detail.
1-1-97	Renum. Standard 2203-16. Added title to SECTION A-A.

**PCC BASE COURSE WITH  
BITUMINOUS CONCRETE BINDER  
AND SURFACE COURSES**

**STANDARD 353001-01**

Illinois Department of Transportation

PASSED January 1, 2004  
*Michael Brand*  
ENGINEER OF POLICY AND PROCEDURES

APPROVED January 1, 2004  
*Michael L. Hine*  
ENGINEER OF DESIGN AND ENVIRONMENT

ISSUED 1-1-97