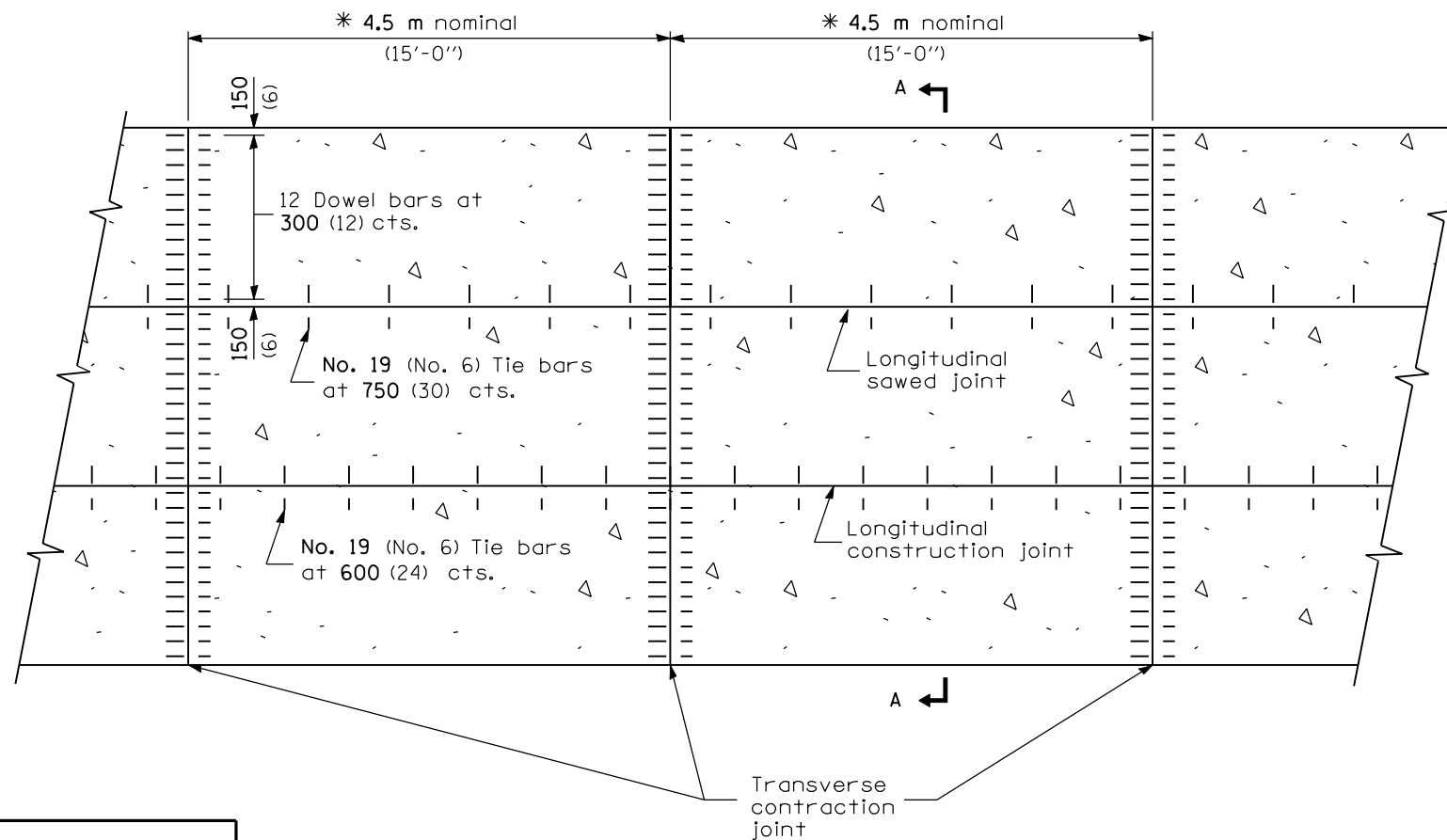
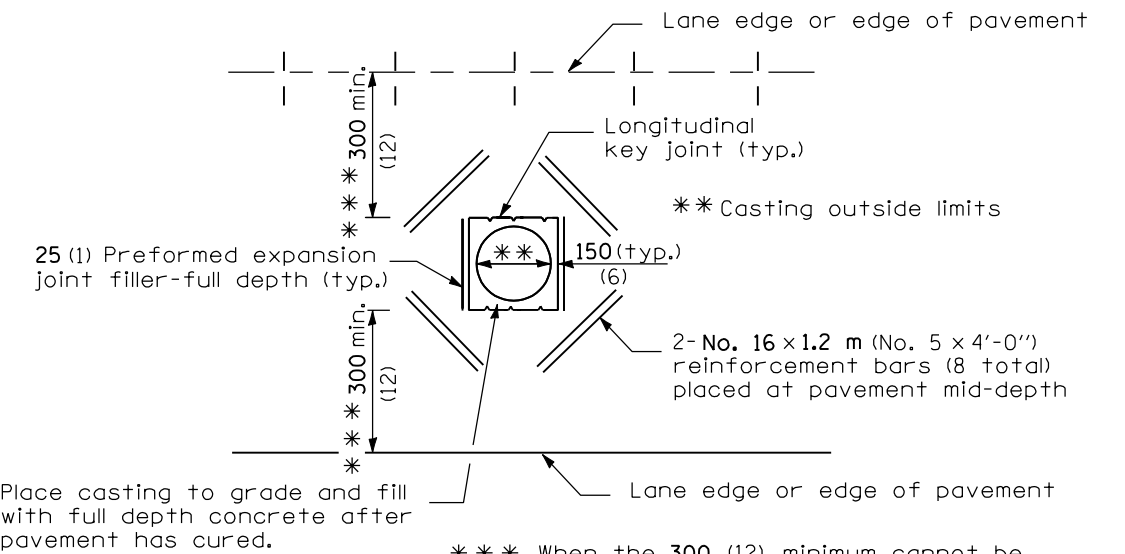


SECTION A-A
(TYPICAL 3-LANE, 1-WAY WITH SHOULDERS)

* The 4.5 m (15') dimension should be adjusted to 3.6 m (12') min. to 5.5 m (18') max. when placed adjacent to existing pcc pavement structure so that the joints are in prolongation.



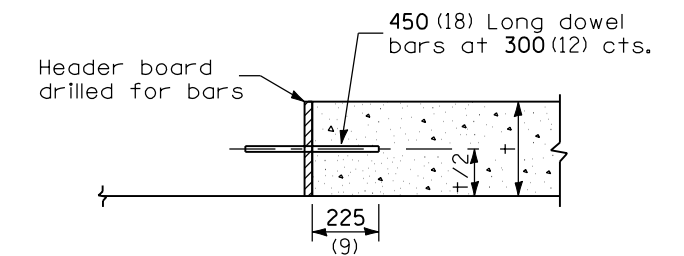
PLAN



Place casting to grade and fill with full depth concrete after pavement has cured.

*** When the 300 (12) minimum cannot be achieved, the transverse joints shall be extended to either the longitudinal joint or edge of pavement.

**DETAIL OF ADDED REINFORCEMENT
FOR PAVEMENT BLOCK-OUTS**



TRANSVERSE CONSTRUCTION JOINT

GENERAL NOTES

See Standard 420001 for details of joints not shown.

All dimensions are in millimeters (inches) unless otherwise shown.

Illinois Department of Transportation

PASSED January 1, 2004
Michael Brand
ENGINEER OF POLICY AND PROCEDURES

APPROVED January 1, 2004
Michael L. Hine
ENGINEER OF DESIGN AND ENVIRONMENT

ISSUED 1-1-97

DATE	REVISIONS
1-1-04	Minor corrections of joint information.
1-1-98	Del. Hinge Joints.

**10.8 m (36') JOINTED
PCC PAVEMENT**

STANDARD 420106-02