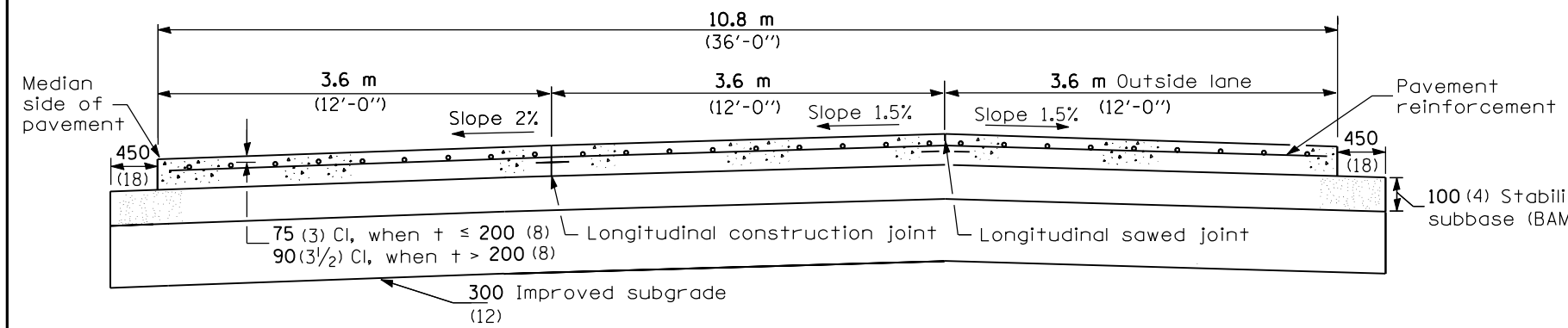
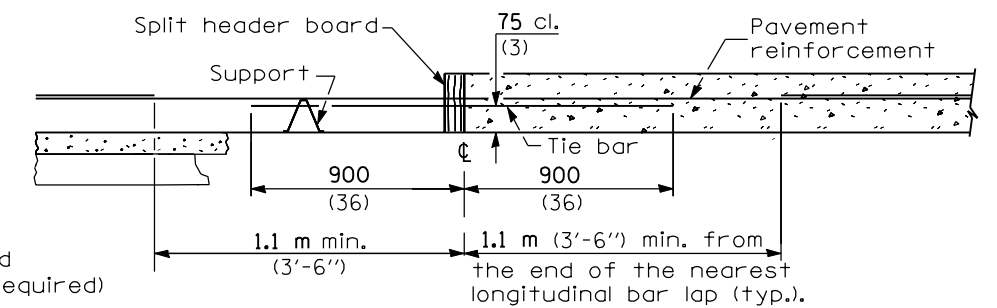


**PLAN**

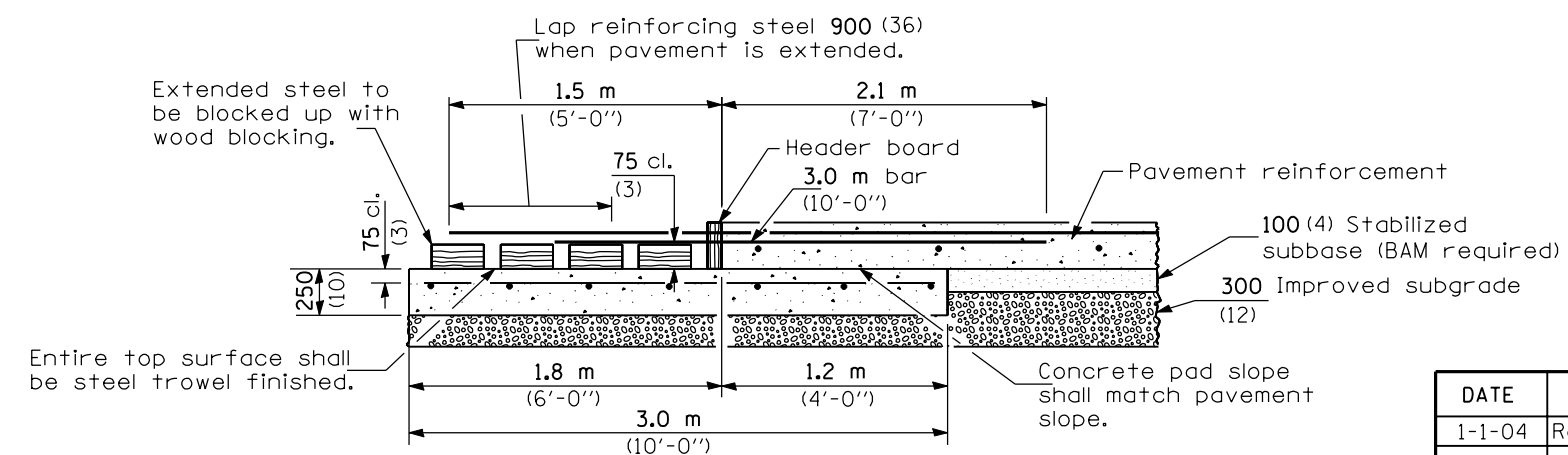


**SECTION A-A**

(TYPICAL 3-LANE, 1-WAY WITH SHOULDERS)



**TRANSVERSE CONSTRUCTION JOINT**



**TRANSVERSE TERMINAL JOINT**

**SECTION B-B**

**GENERAL NOTES**

Sealant components for the wide flange beam terminal joint shall be as follows or approved equals. Sealant shall be Dow Corning 888 Silicone Highway Joint Sealant. Tape shall be Polyethylene Tape No. 40. Primer, used on the metal only, shall be Dow Corning 1200. At the Contractor's option the joint may be sealed as shown in the optional groove detail.

See Standard 421001 for details of pavement reinforcement.

See Standards 420001 and 420401 for joint details not shown.

All dimensions shall be in millimeters (inches) unless otherwise shown.

DATE	REVISIONS
1-1-04	Rev. width of trans. expansion joint.
1-1-03	Soft-converted metric reinf. bars

**10.8 m (36')**  
**CRC PAVEMENT**  
(WITH WIDE FLANGE BEAM TERMINAL JOINT)  
(Sheet 1 of 2)

**STANDARD 421106-05**

Illinois Department of Transportation

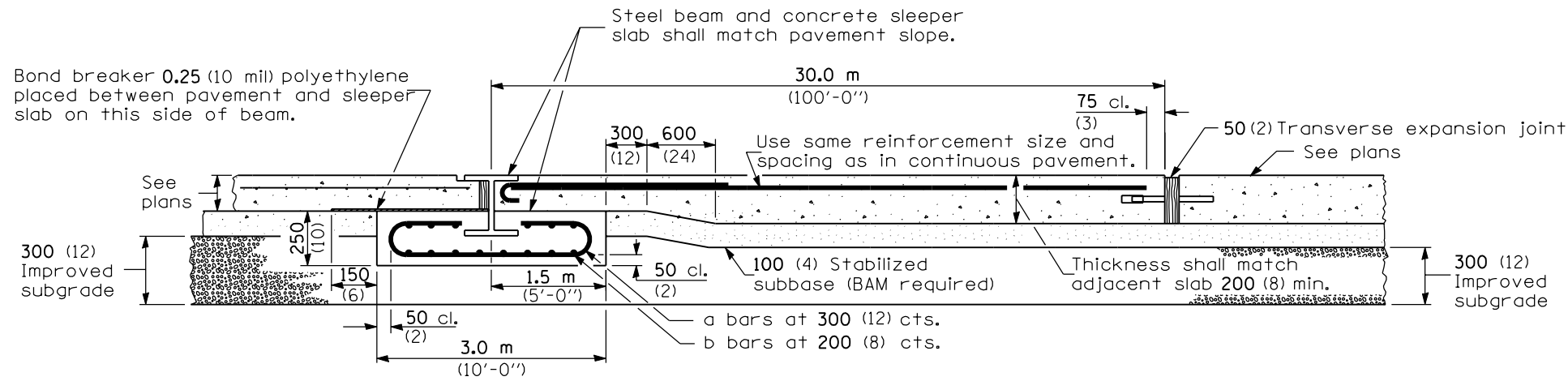
PASSED January 1, 2004

Michael Brand  
ENGINEER OF POLICY AND PROCEDURES

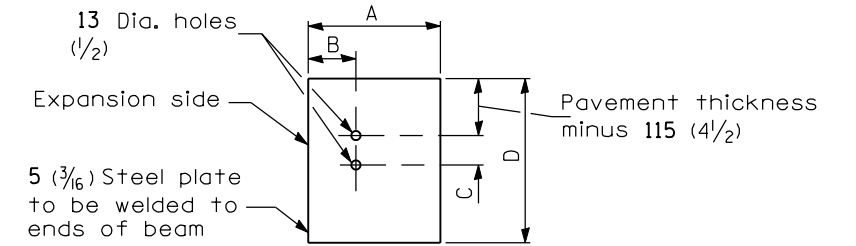
APPROVED January 1, 2004

Michael L. Hine  
ENGINEER OF DESIGN AND ENVIRONMENT

ISSUED 1-1-97

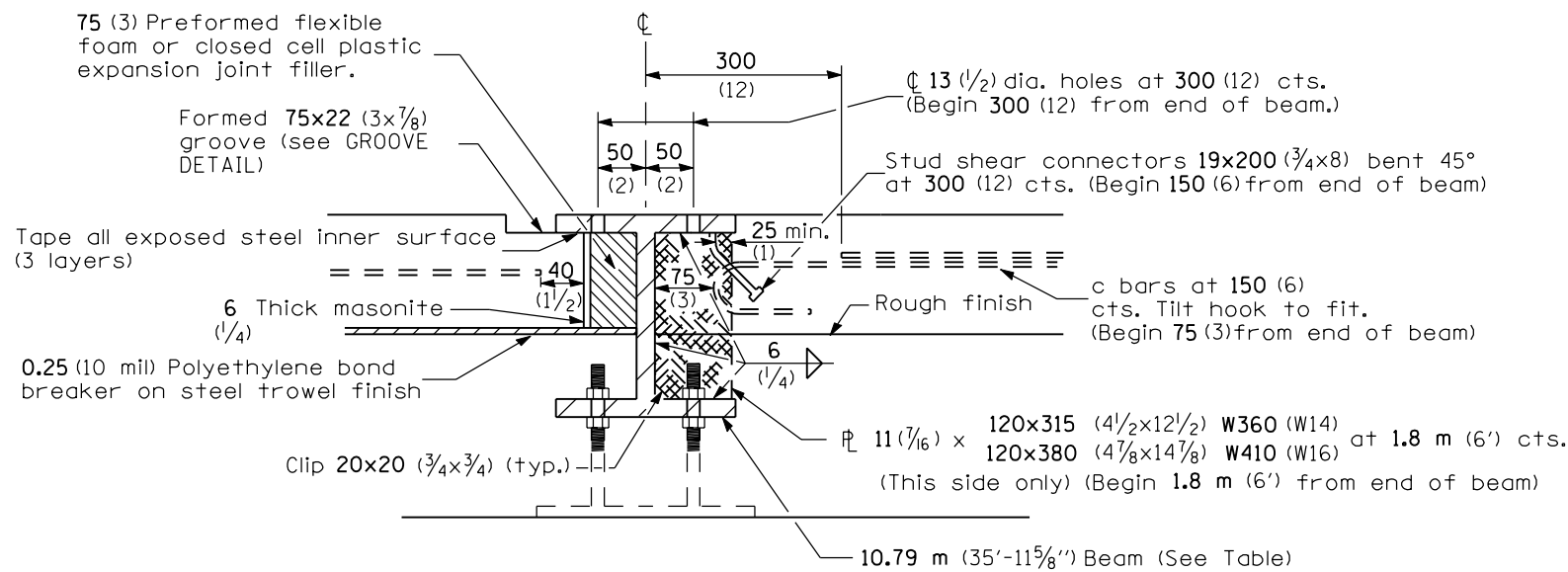


**WIDE FLANGE BEAM TERMINAL JOINT**

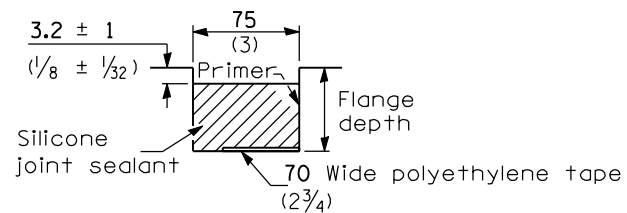


**END PLATE**

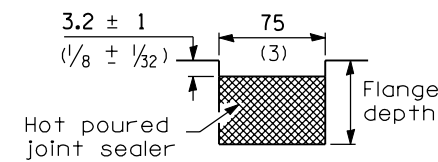
PAVEMENT THICKNESS	< 250 (10)	≥ 250 (10)
BEAM SIZE	W360x122 (W14x82)	W410x149 (W16x100)
A	255 (10 3/8)	265 (10 3/8)
B	110 (4 3/16)	115 (4 3/16)
C	75 (3)	100 (4)
D	360 (14 1/4)	430 (17)



**DETAIL AT BEAM**



**GROOVE DETAIL**



**GROOVE DETAIL (OPTIONAL)**

**MATERIALS REQUIRED FOR ONE TRANSVERSE TERMINAL JOINT COMPLETE**

Concrete, m <sup>3</sup> (cu. yds.)	8.1 (11.1)
Reinforcement bars, kg (lbs.)	235 (523)
Pavement reinforcement, m <sup>2</sup> (sq. yds.)	16.2 (20)

**MATERIALS REQUIRED FOR ONE WIDE FLANGE BEAM TERMINAL JOINT COMPLETE**

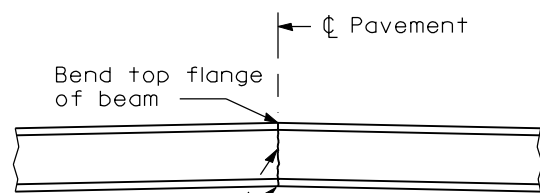
Bar	No.	Size	Length	Shape
a	36	No. 13 (No. 4)	5.8 m (19'-0")	
b	29	No. 16 (No. 5)	10.7 m (35'-8")	
c	72	No. 19 (No. 6)	2.6 m (8'-6")	

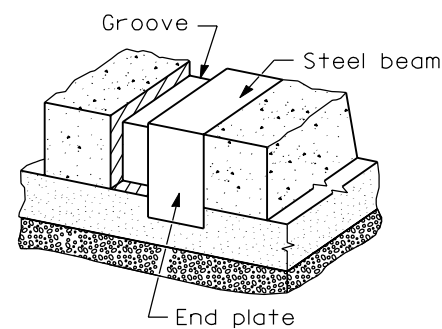
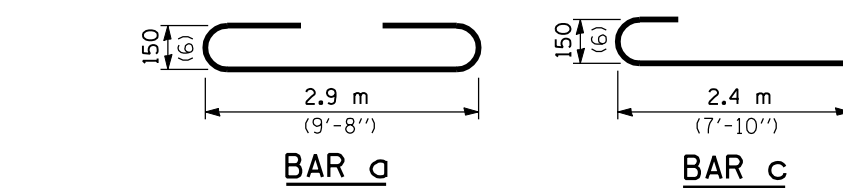
Concrete, m <sup>3</sup> (cu. yds.)	8.1 (11.1)
Reinforcement Bars, kg (lbs.)	1115 (2455)
Structural Steel, kg (lbs.)	W360 (W14) 1360 (3040) W410 (W16) 1655 (3710)

\*Weight includes beam, end plates, stiffener plates and studs.

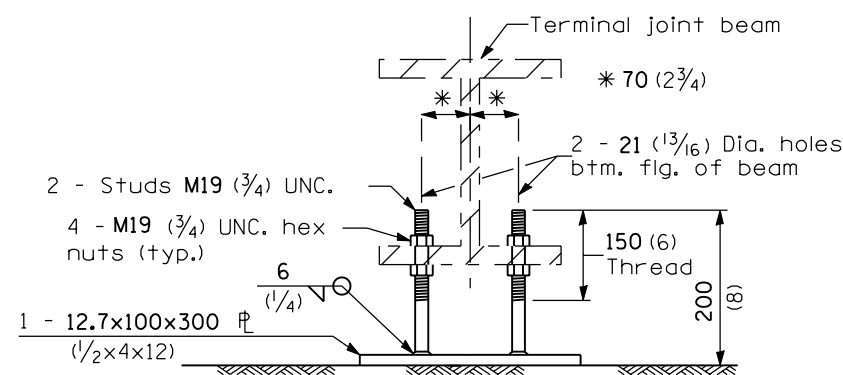
Pavement, m <sup>2</sup> (sq. yds.)	324 (400)
Pavement Reinforcement, m <sup>2</sup> (sq. yds.)	324 (400)
100 (4) Stabilized Subbase, m <sup>2</sup> (sq. yds.)	333.5 (411.6)
Improved Subgrade, m <sup>2</sup> (sq. yds.)	351 (433.3)



**DETAIL OF CUTTING AND WELDING BEAM**



**VIEW OF GROOVE AT EDGE OF PAVEMENT**



**OPTIONAL ADJUSTABLE CHAIR**

All dimensions are in millimeters (inches) unless otherwise shown.

**10.8 m (36')**  
**CRC PAVEMENT**  
(WITH WIDE FLANGE BEAM TERMINAL JOINT)  
(Sheet 2 of 2)

**STANDARD 421106-05**

Illinois Department of Transportation

PASSED January 1, 2004  
*Michael Brand*  
ENGINEER OF POLICY AND PROCEDURES

APPROVED January 1, 2004  
*Michael L. Hine*  
ENGINEER OF DESIGN AND ENVIRONMENT

ISSUED 1-1-97