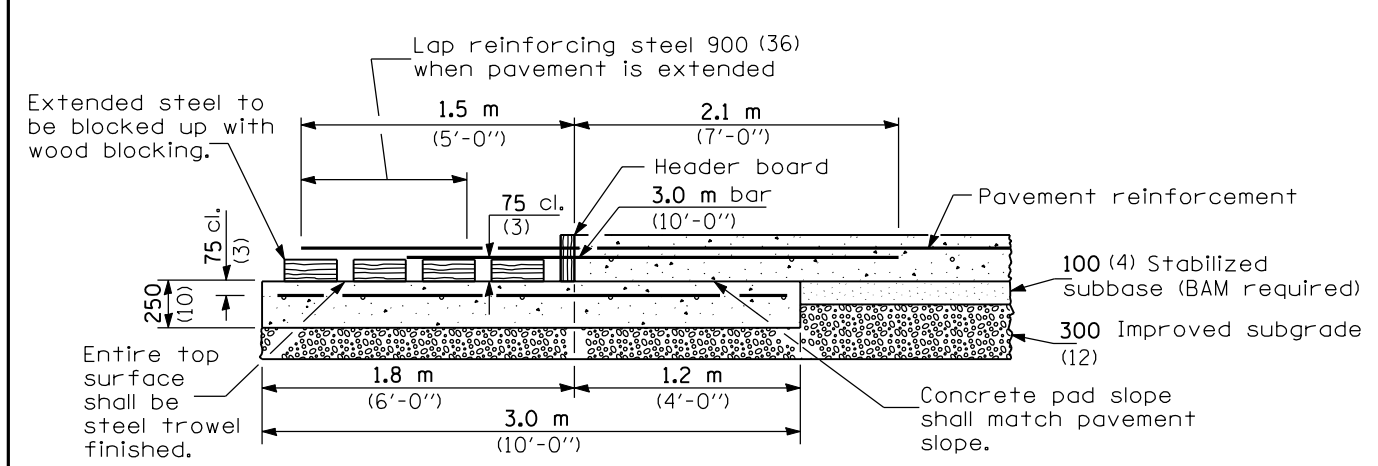
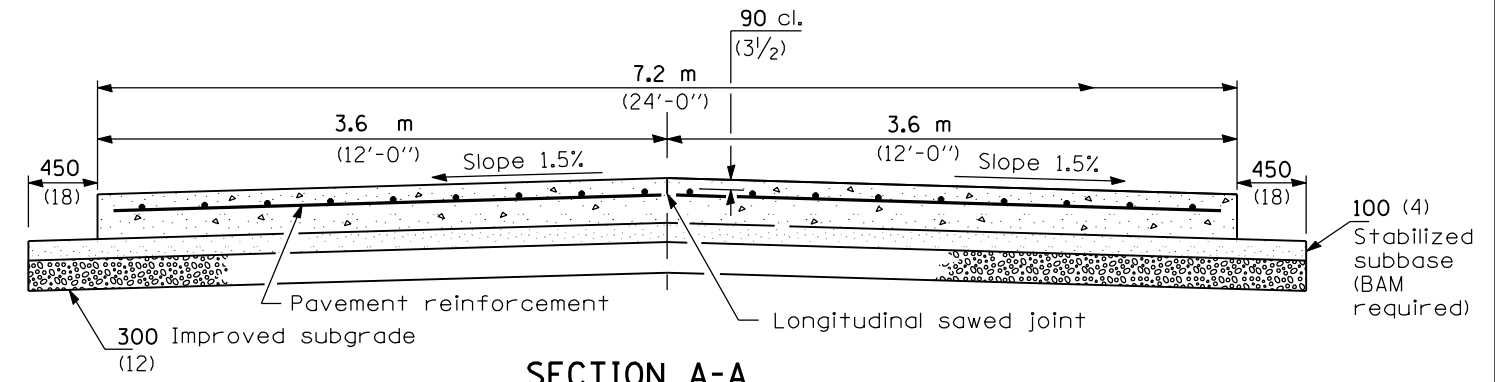


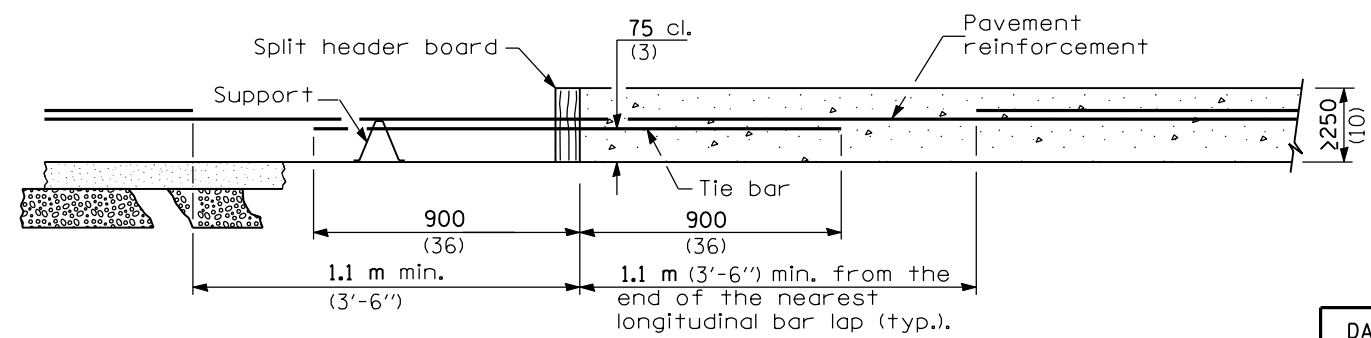
**PLAN**



**TRANSVERSE TERMINAL JOINT SECTION B-B**



**SECTION A-A (TYPICAL 2-LANE WITH SHOULDERS)**



**TRANSVERSE CONSTRUCTION JOINT**

**GENERAL NOTES**

- See Standard 421001 for details of pavement reinforcement.
- See Standards 420001 and 420401 for joint details not shown.
- All dimensions are in millimeters (inches) unless otherwise shown.

Illinois Department of Transportation

PASSED January 1, 2004

Michael Beard  
ENGINEER OF POLICY AND PROCEDURES

APPROVED January 1, 2004

Michael L. Hine  
ENGINEER OF DESIGN AND ENVIRONMENT

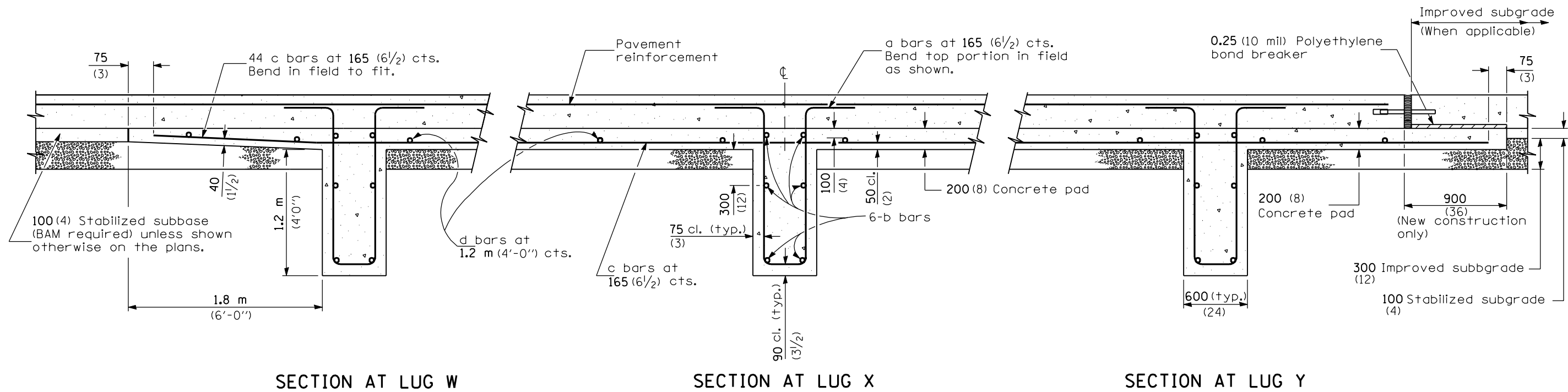
ISSUED 1-1-97

DATE	REVISIONS
1-1-04	Rev. width of trans. expansion joint.
1-1-03	Soft-converted metric reinf. bars.

**7.2 m (24')  
CRC PAVEMENT  
(WITH LUG SYSTEM)**

(Sheet 1 of 2)

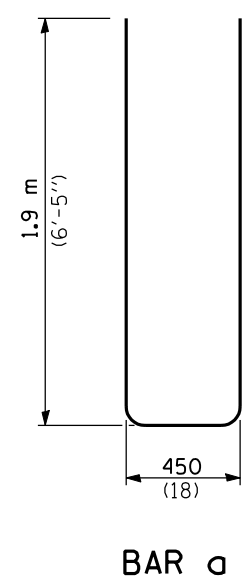
**STANDARD 421201-04**



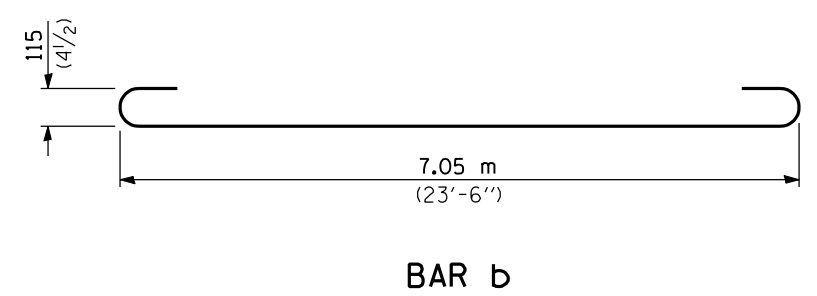
SECTION AT LUG W

SECTION AT LUG X

SECTION AT LUG Y



BAR a



BAR b

MATERIALS REQUIRED FOR (1) ONE LUG SYSTEM  
(Excluding Pavement Concrete and Pavement Reinforcement)

Bar	Qty.	Size	Length	Shape
a	132	No. 25 (No. 8)	4.25 m (14'-0")	
b	18	No. 16 (No. 5)	7.43 m (24'-9")	
c	132	No. 16 (No. 5)	6.10 m (20'-0")	
d	28	No. 13 (No. 4)	3.52 m (11'-9")	

Concrete, m <sup>3</sup> (cu. yds.)	15.6 (21.33)
Reinforcing Bars, kg (lbs.)	3800 (8372)
Concrete Pad, m <sup>2</sup> (sq. yds.)	104 (128)
Improved Subgrade, m <sup>2</sup> (sq. yds.)	117 (144)

All dimensions are in millimeters (inches) unless otherwise shown.

7.2 m (24')  
**CRC PAVEMENT**  
(WITH LUG SYSTEM)  
(Sheet 2 of 2)

---

**STANDARD 421201-04**

Illinois Department of Transportation

PASSED January 1, 2004  
*Michael Beard*  
ENGINEER OF POLICY AND PROCEDURES

APPROVED January 1, 2004  
*Michael L. Hine*  
ENGINEER OF DESIGN AND ENVIRONMENT

ISSUED 1-1-97