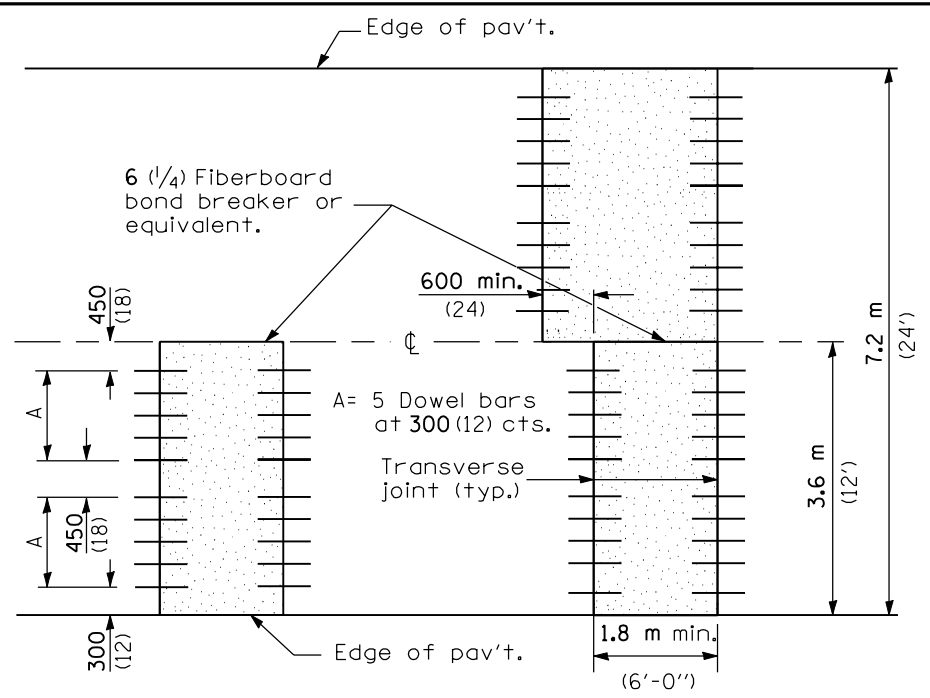
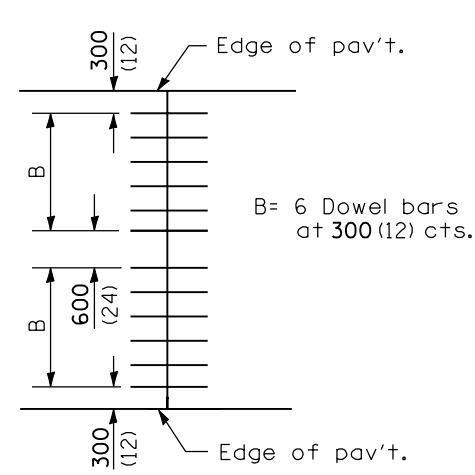


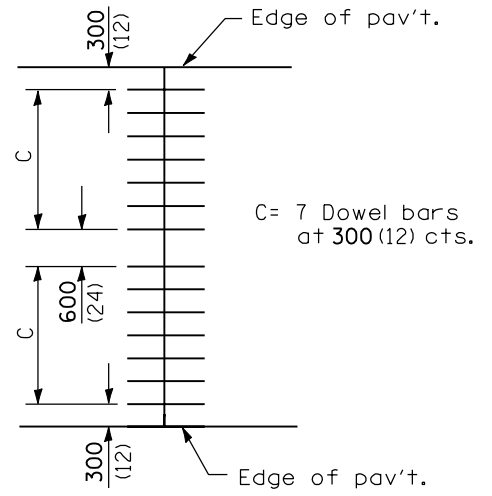
PAVEMENT SAWING DETAIL
(BITUMINOUS SHOULDER)



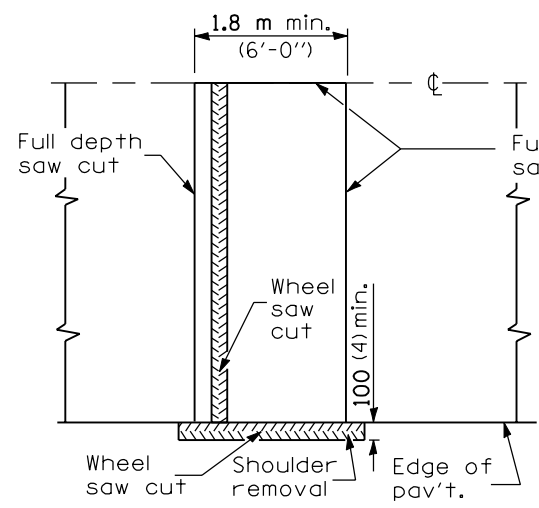
3.6 m (12') WIDE LANES



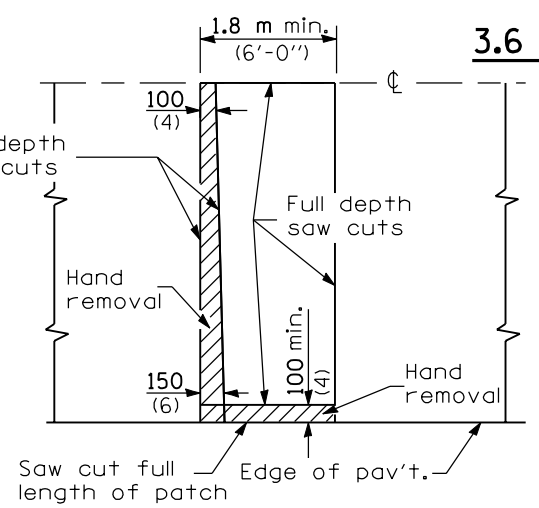
4.2 m (14') WIDE RAMP



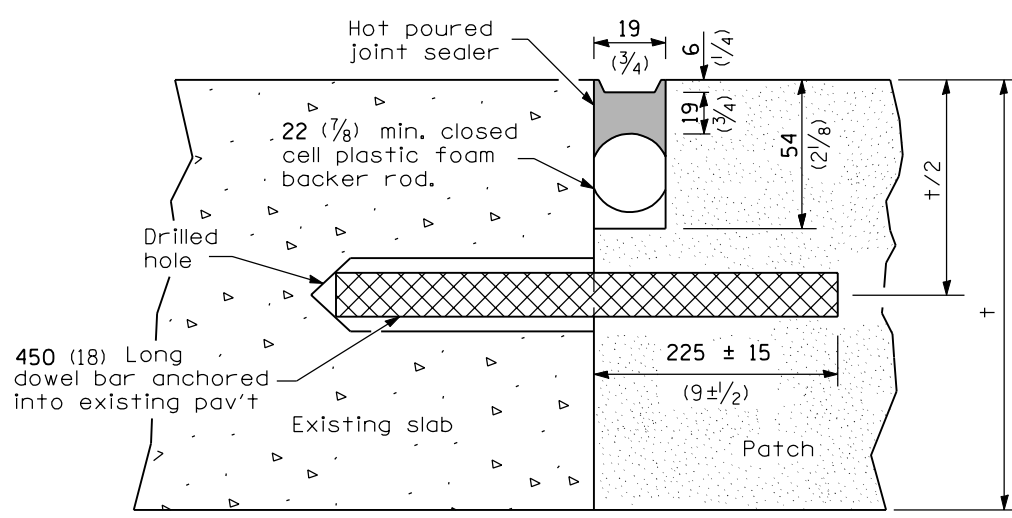
4.8 m (16') WIDE RAMP



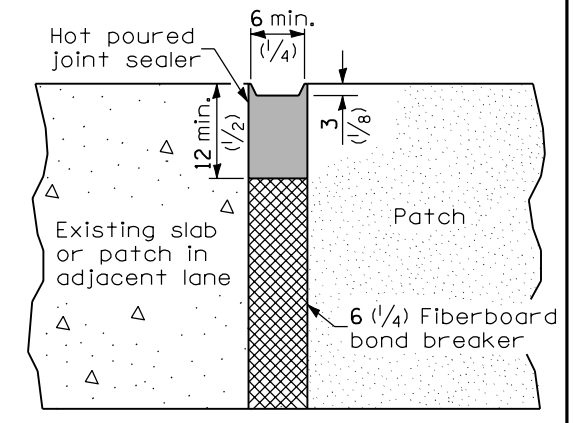
ALTERNATE SAWING DETAIL
(BITUMINOUS SHOULDER)



PAVEMENT SAWING DETAIL
(PCC SHOULDER)



TRANSVERSE JOINT



CENTERLINE JOINT

GENERAL NOTES

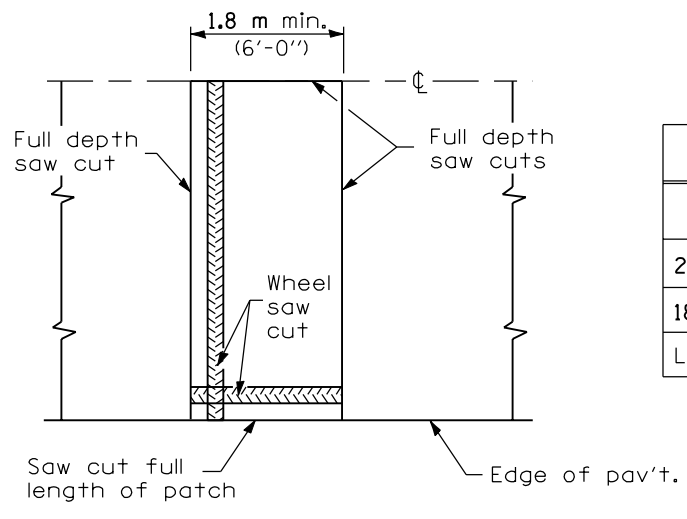
The transverse joints for Class B patches shall align with joints or cracks in the adjacent lane whenever possible.

For Class B patches 14 m (45') or longer, transverse contraction joints shall be installed at regular intervals per the joint spacing of the existing pavement.

See Standard 420701 for details of pavement fabric.

All dimensions are in millimeters (inches) unless otherwise shown.

DOWEL BAR TABLE		
PAVEMENT THICKNESS	DOWEL BAR DIAMETER	HOLE DIAMETER
200 (8) or greater	38 (1 1/2)	41 (1 5/8)
180 (7) thru 199 (7.99)	32 (1 1/4)	35 (1 3/8)
Less than 180 (7)	25 (1)	29 (1 1/8)



ALTERNATE SAWING DETAIL
(PCC SHOULDER)

Illinois Department of Transportation

PASSED January 1, 2004

ISSUED 1-1-97

APPROVED January 1, 2004

Michael Brand
ENGINEER OF POLICY AND PROCEDURES

Michael L. Hine
ENGINEER OF DESIGN AND ENVIRONMENT

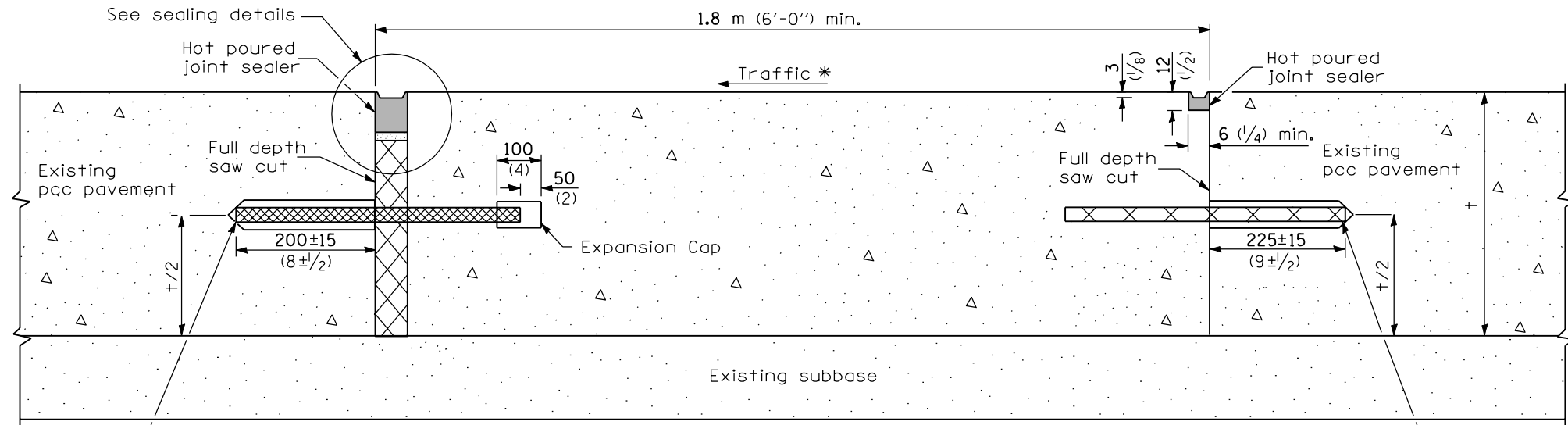
DATE	REVISIONS
1-1-04	Revised expansion caps and general notes.
1-1-03	Revised expansion joint dowels to epoxy coated, and minor revisions.

CLASS B PATCHES

(Sheet 1 of 2)

STANDARD 442101-05

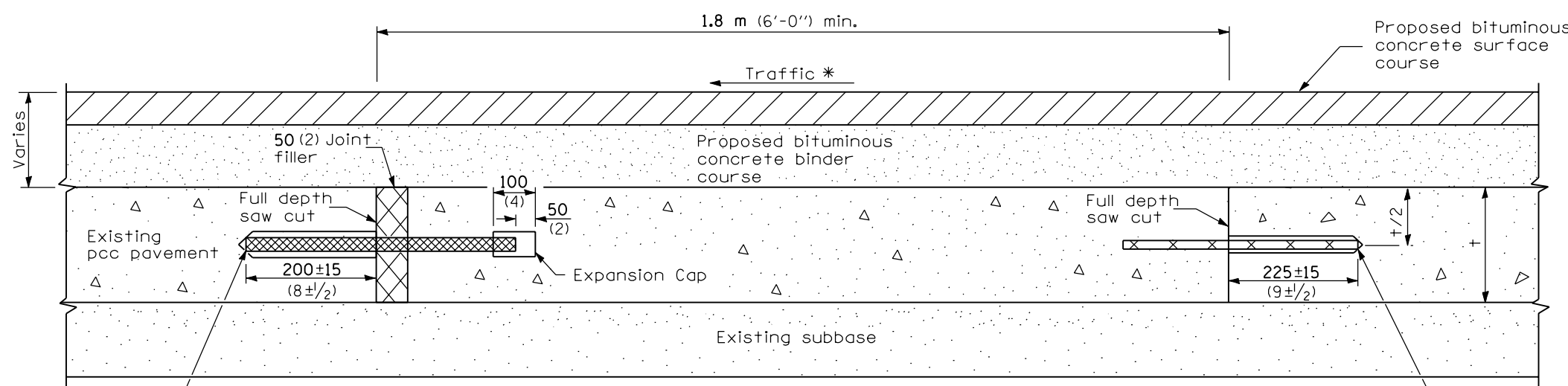
TRANSVERSE EXPANSION JOINTS



450 (18) Long dowel bars anchored into existing pavement at 300 (12) cts.

No. 32x450 (No. 10x18) Tie bars anchored into existing pavement at 300 (12) cts.

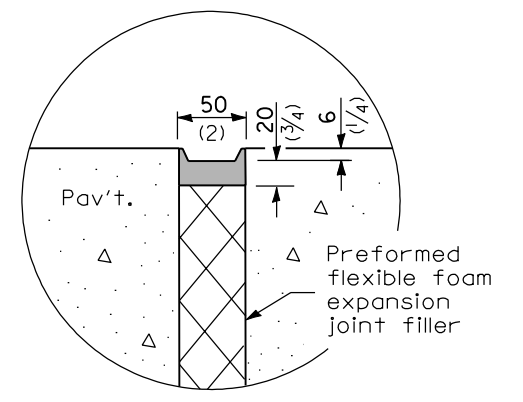
METHOD I
(Without Resurfacing)



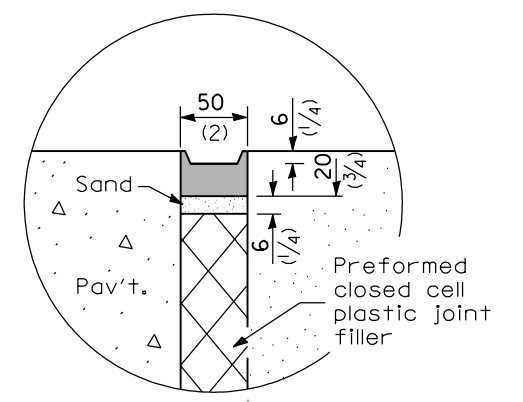
450 (18) Long dowel bars anchored into existing pavement at 300 (12) cts.

No. 32x450 (No. 10x18) Tie bars anchored into existing pavement at 300 (12) cts.

METHOD II
(With Resurfacing)



SEALING DETAIL



SEALING DETAIL

NOTE

* When re-establishing a transverse expansion joint on a two-lane, two-way road, reverse the orientation of the dowel bars with respect to traffic for one of the patches such that the joint will be continuous across both lanes.

Illinois Department of Transportation

PASSED January 1, 2004
Michael Beard
ENGINEER OF POLICY AND PROCEDURES

APPROVED January 1, 2004
Michael L. Hine
ENGINEER OF DESIGN AND ENVIRONMENT

ISSUED 1-1-97

CLASS B PATCHES

(Sheet 2 of 2)

STANDARD 442101-05