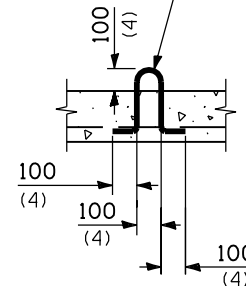
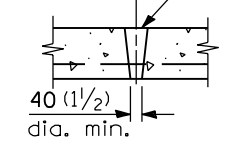


PLAN

(WELDED WIRE FABRIC)

No. 15 (No. 4) bar loop.
Burn off after installation when necessary.

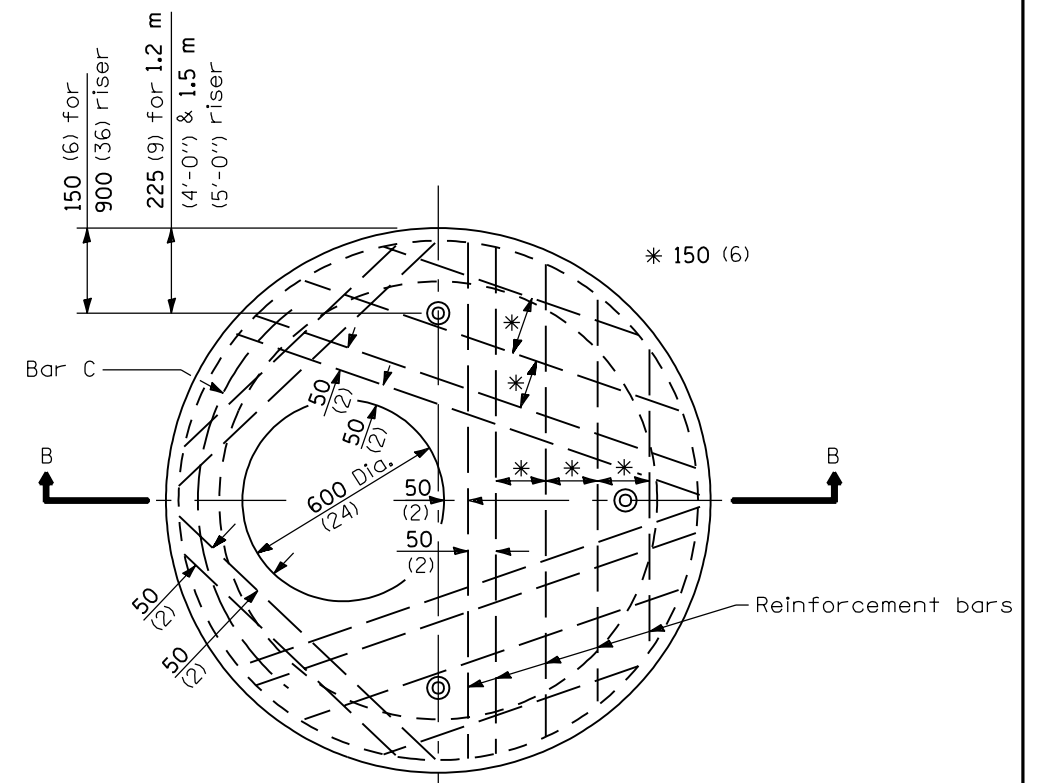
Plug and seal with mastic after installation.



LIFTING HOLE OR LIFTING LOOP

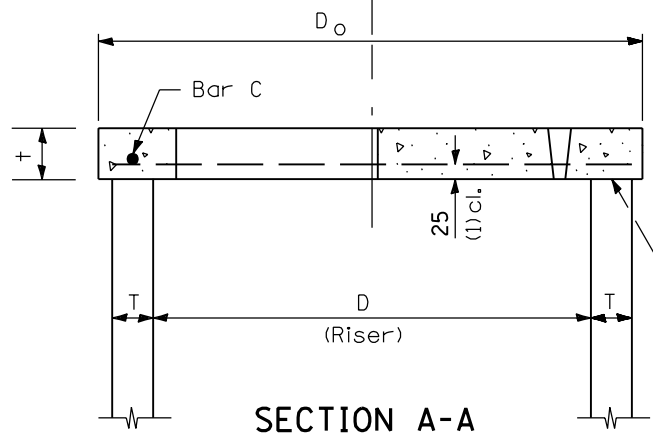
TYPICAL

(3 required per slab)

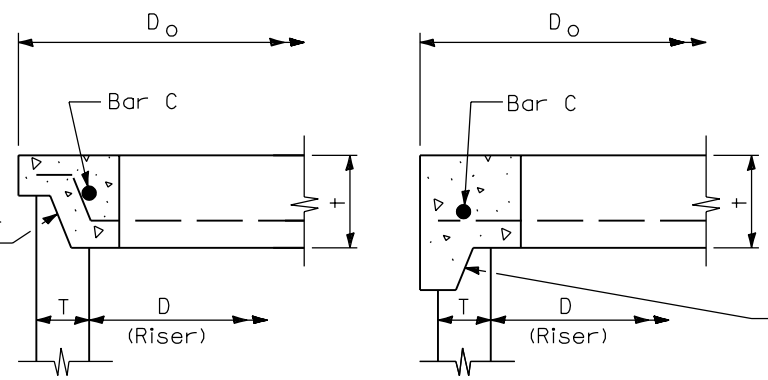


PLAN

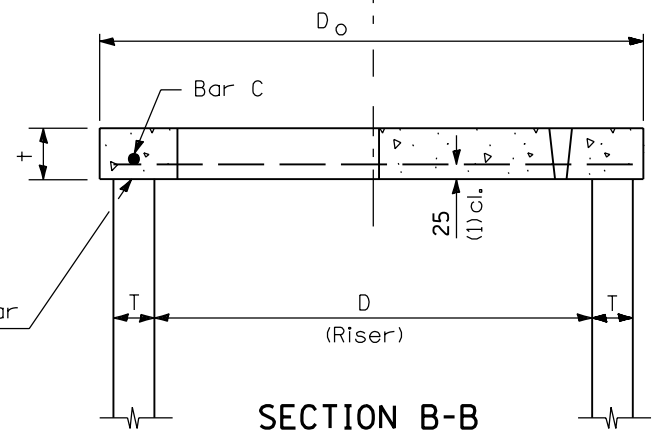
(REINFORCEMENT BARS)



SECTION A-A



ALTERNATE JOINT CONFIGURATIONS

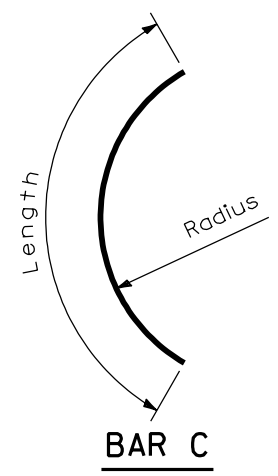


SECTION B-B

GENERAL NOTES

The flat slab top may be used in lieu of the tapered tops shown on Standards 602001, 602011, 602306, 602401, or 602501 at the option of the Contractor or when field conditions prohibit the use of tapered tops.

All dimensions are in millimeters (inches) unless otherwise shown.



TABLE

D	T	D _o (min.)	+	Reinforcement "A _s " W.W.F. each direction	OR Bar size	No. 15 (No. 4) Bar C Length	No. 15 (No. 4) Bar C Radius
900 (36)	See applicable Standards	D + 2T	150 (6)	425 mm ² / m (.20 sq. inch/ft.)	No. 15 (No. 4)	1.2 m (4'-0")	480 (19)
1.2 m (4'-0")			150 (6)	740 mm ² / m (.35 sq. inch/ft.)	No. 15 (No. 5)	1.35 m (4'-6")	660 (26)
1.5 m (5'-0")			200 (8)	740 mm ² / m (.35 sq. inch/ft.)	No. 15 (No. 5)	1.5 m (5'-0")	810 (32)

DATE	REVISIONS
1-1-97	Renum. Standard 2354-2
6-15-94	Moved G.N. to Specs. Added Metric. Revised title.

**PRECAST REINFORCED CONCRETE
FLAT SLAB TOP**

STANDARD 602601

Illinois Department of Transportation

PASSED January 1, 1997

ENGINEER OF POLICE AND PROCEDURES

APPROVED January 1, 1997

ENGINEER OF DESIGN AND ENVIRONMENT

ISSUED 1-1-97