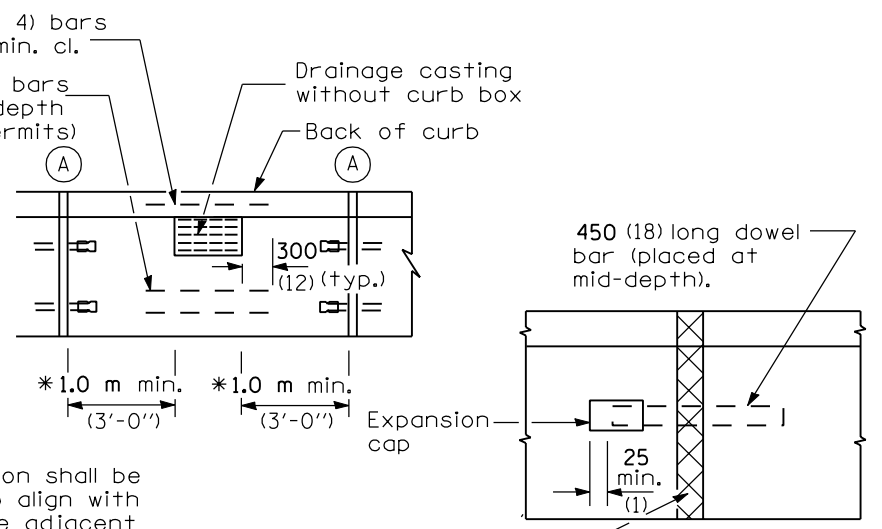


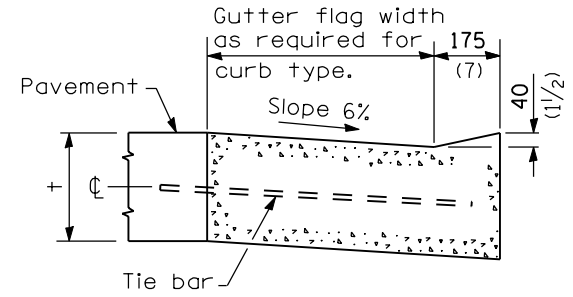
**PLAN**

**ADJACENT TO PCC PAVEMENT OR PCC BASE COURSE**

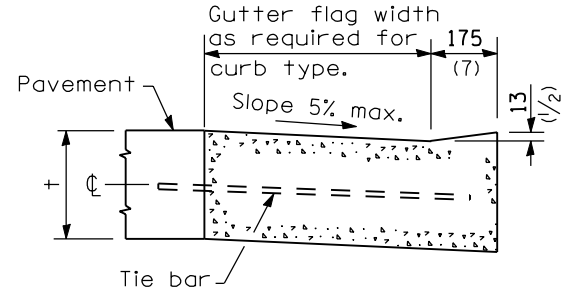


**DETAIL A**  
**EXPANSION JOINT**

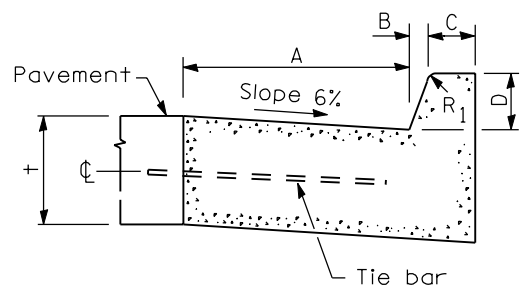
Full depth & width 25 (1) - thick (min.) preformed expansion joint filler.



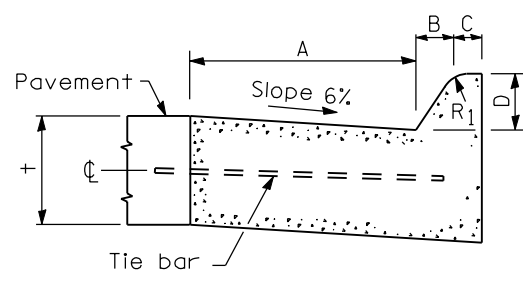
**DEPRESSED CURB (TYPICAL)**



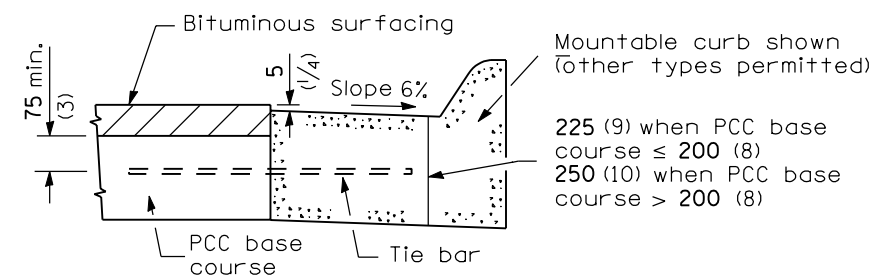
**DEPRESSED CURB ADJACENT TO CURB RAMP ACCESSIBLE TO THE DISABLED**



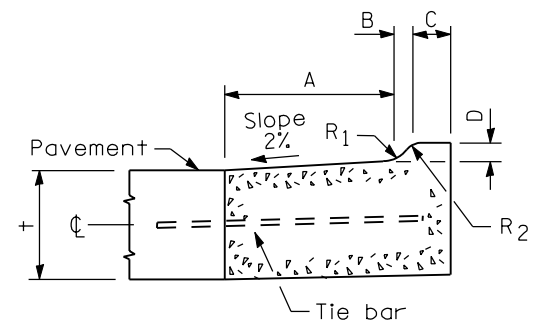
**BARRIER CURB**



**MOUNTABLE CURB**



**ADJACENT TO PCC BASE COURSE AND BITUMINOUS SURFACING**



**M-5.15 (M-2.06) and M-5.30 (M-2.12)**

TYPE	A	B	C	D	R <sub>1</sub>
B-15.30 (B-6.12)	300 (12)	25 (1)	150 (6)	150 (6)	25 (1)
B-15.45 (B-6.18)	450 (18)	25 (1)	150 (6)	150 (6)	25 (1)
B-15.60 (B-6.24)	600 (24)	25 (1)	150 (6)	150 (6)	25 (1)
B-22.30 (B-9.12)	300 (12)	50 (2)	125 (5)	225 (9)	25 (1)
B-22.45 (B-9.18)	450 (18)	50 (2)	125 (5)	225 (9)	25 (1)
B-22.60 (B-9.24)	600 (24)	50 (2)	125 (5)	225 (9)	25 (1)

TYPE	A	B	C	D	R <sub>1</sub>	R <sub>2</sub>
M-5.15 (M-2.06)	150 (6)	50 (2)	100 (4)	50 (2)	75 (3)	50 (2)
M-5.30 (M-2.12)	300 (12)	50 (2)	100 (4)	50 (2)	75 (3)	50 (2)
M-10.15 (M-4.06)	150 (6)	100 (4)	75 (3)	100 (4)	75 (3)	NA
M-10.30 (M-4.12)	300 (12)	100 (4)	75 (3)	100 (4)	75 (3)	NA
M-10.45 (M-4.18)	450 (18)	100 (4)	75 (3)	100 (4)	75 (3)	NA
M-10.60 (M-4.24)	600 (24)	100 (4)	75 (3)	100 (4)	75 (3)	NA
M-15.15 (M-6.06)	150 (6)	150 (6)	50 (2)	150 (6)	50 (2)	NA
M-15.30 (M-6.12)	300 (12)	150 (6)	50 (2)	150 (6)	50 (2)	NA
M-15.45 (M-6.18)	450 (18)	150 (6)	50 (2)	150 (6)	50 (2)	NA
M-15.60 (M-6.24)	600 (24)	150 (6)	50 (2)	150 (6)	50 (2)	NA

**GENERAL NOTES**

The bottom slope of combination curb and gutter constructed adjacent to pcc pavement shall be the same slope as the subbase or 6% when subbase is omitted.

t = Thickness of pavement.

Longitudinal joint tie bars shall be No. 19 (No. 6) at 600 mm (24") centers in accordance with details for longitudinal construction joint shown on Standard 420001.

A minimum clearance of 50 mm (2") between the end of the tie bar and the back of the curb shall be maintained.

All dimensions are in millimeters (inches) unless otherwise shown.

DATE	REVISIONS
1-1-04	Revised expansion cap and soft converted metric reinforcement.
1-1-98	Rev. slope on M-5 (M-2) curbs. Del. "Hinge joint" from plan view.

**CONCRETE CURB TYPE B AND COMBINATION CONCRETE CURB AND GUTTER**  
(Sheet 1 of 2)

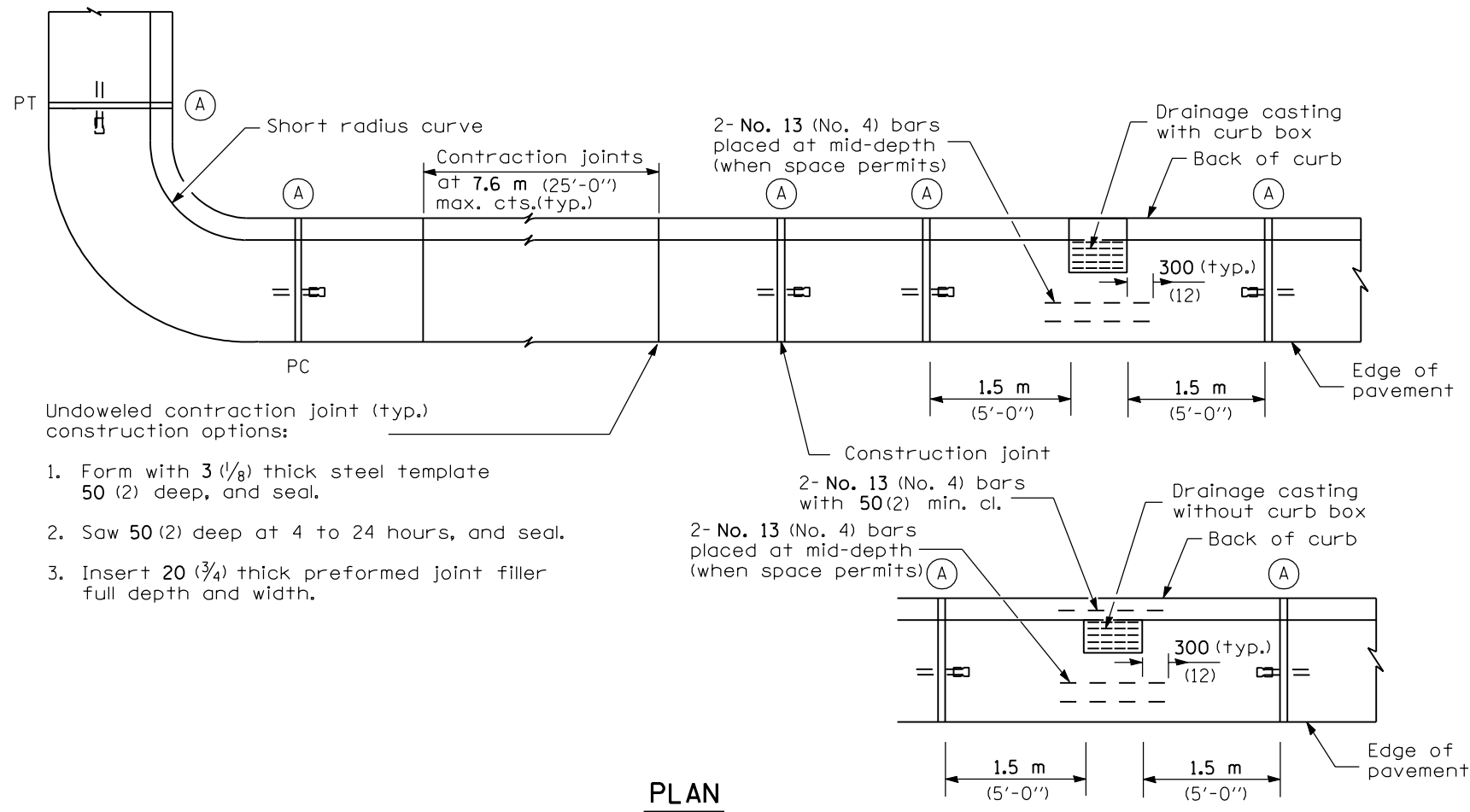
**STANDARD 606001-02**

Illinois Department of Transportation

PASSED January 1, 2004  
Michael Brand  
ENGINEER OF POLICY AND PROCEDURES

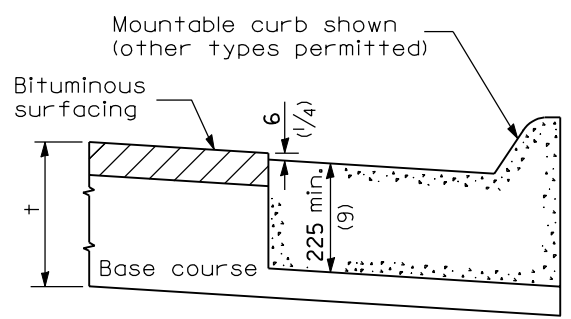
APPROVED January 1, 2004  
Michael L. Hine  
ENGINEER OF DESIGN AND ENVIRONMENT

ISSUED 1-1-98

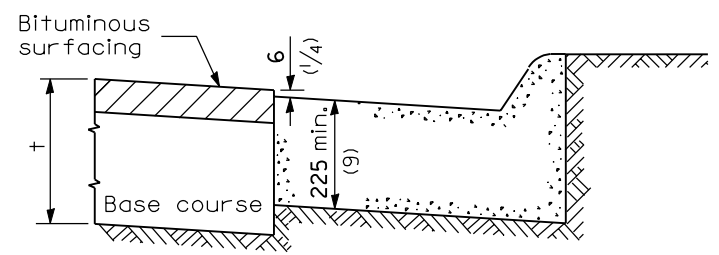


**PLAN**

- Undoweled contraction joint (typ.) construction options:
1. Form with 3 (1/8) thick steel template 50 (2) deep, and seal.
  2. Saw 50 (2) deep at 4 to 24 hours, and seal.
  3. Insert 20 (3/4) thick preformed joint filler full depth and width.

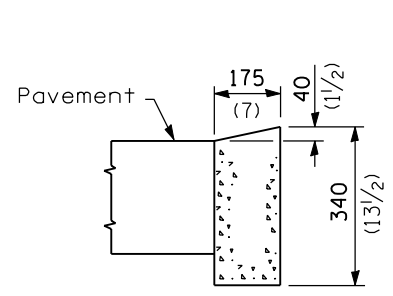


**ON DISTURBED SUBGRADE**

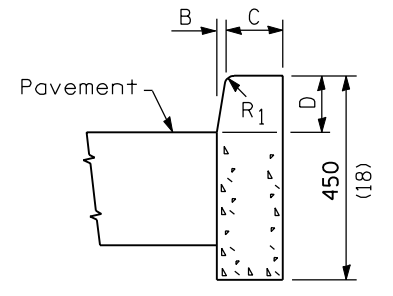


**ON UNDISTURBED SUBGRADE**

**ADJACENT TO FLEXIBLE PAVEMENT**

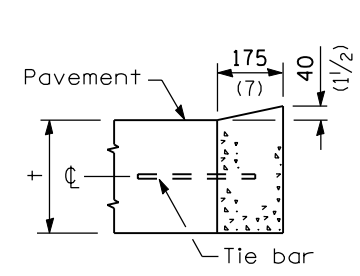


**DEPRESSED CURB**

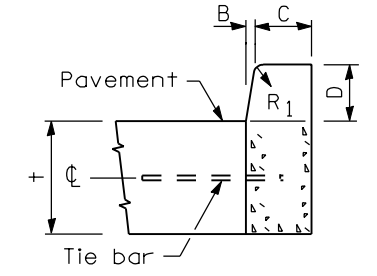


**BARRIER CURB**

**ADJACENT TO FLEXIBLE PAVEMENT**



**DEPRESSED CURB**



**BARRIER CURB**

**ADJACENT TO PCC PAVEMENT OR PCC BASE COURSE**

**CONCRETE CURB TYPE B**

All dimensions are in millimeters (inches) unless otherwise shown.

**CONCRETE CURB TYPE B  
AND COMBINATION  
CONCRETE CURB AND GUTTER**  
(Sheet 2 of 2)

**STANDARD 606001-02**

Illinois Department of Transportation

PASSED January 1, 2004  
*Michael Brand*  
ENGINEER OF POLICY AND PROCEDURES

APPROVED January 1, 2004  
*Michael L. Hine*  
ENGINEER OF DESIGN AND ENVIRONMENT

ISSUED 1-1-97