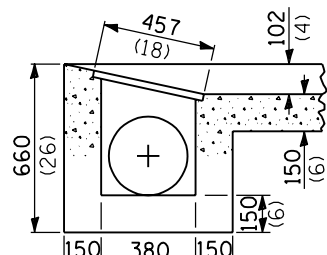


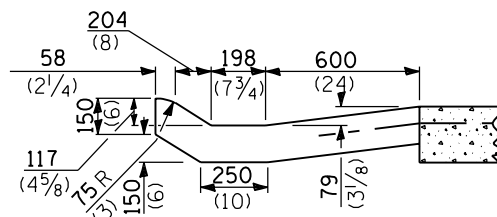
GRATE TYPE A
37 kg (82 lbs.)

QUANTITIES

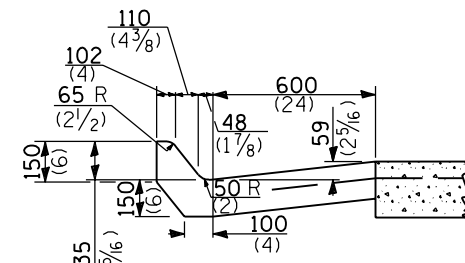
1.51 m³ (1.98 cu. yds.) concrete for 225 (9) pav't.
1.54 m³ (2.01 cu. yds.) concrete for 250 (10) pav't.



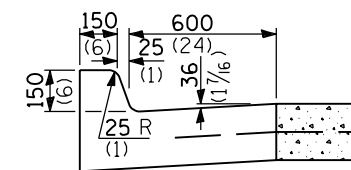
SECTION E-E



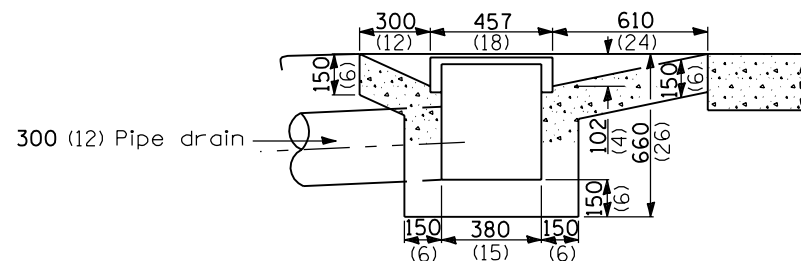
SECTION C-C



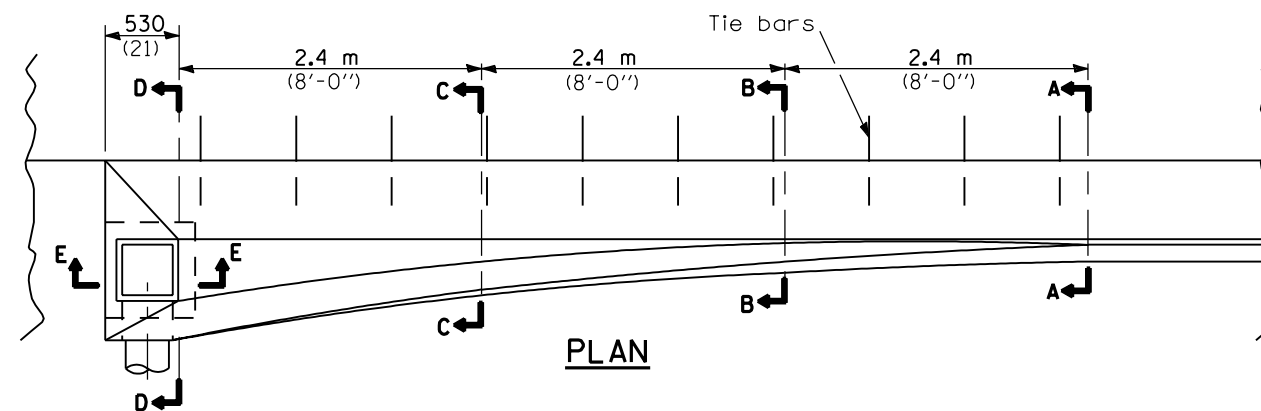
SECTION B-B



SECTION A-A

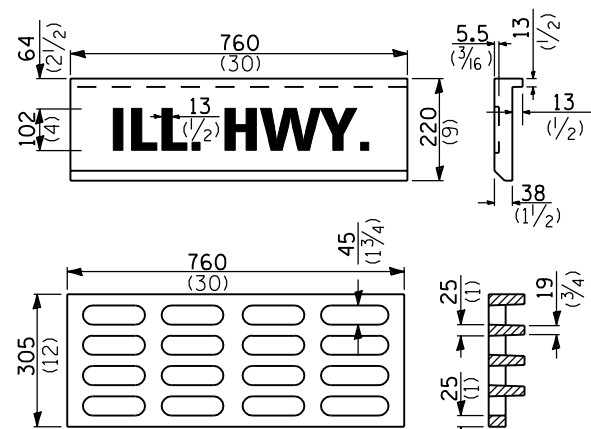


SECTION D-D



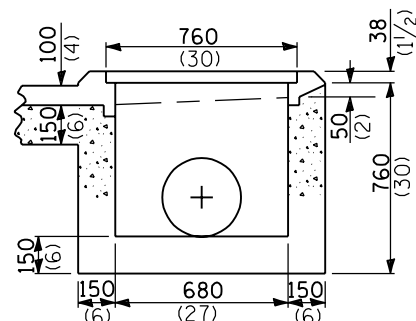
PLAN

TYPE 1 OUTLET

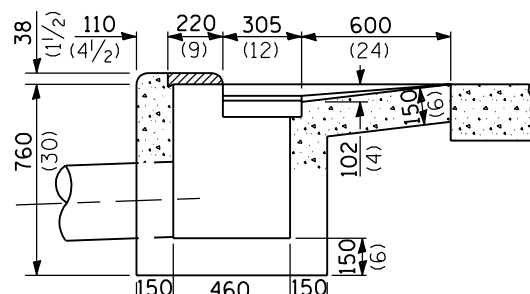


GRATE AND COVER TYPE 2B

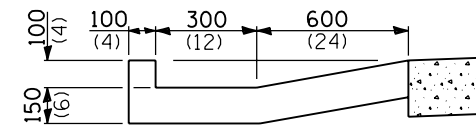
Grate - 47 kg (104 lbs.)
Cover - 47 kg (104 lbs.)



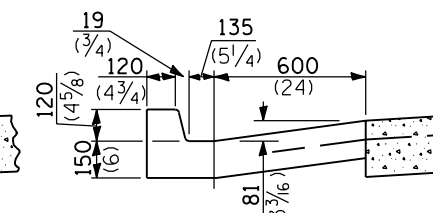
SECTION F-F



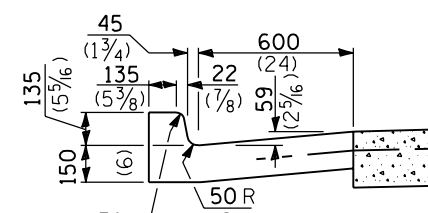
SECTION D-D



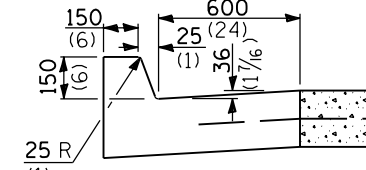
SECTION E-E



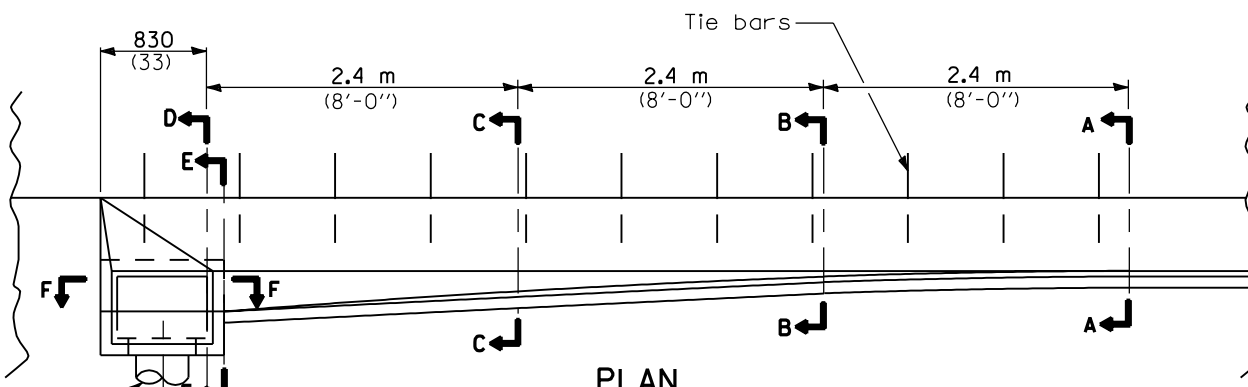
SECTION C-C



SECTION B-B



SECTION A-A



PLAN

TYPE 2 OUTLET

QUANTITIES

1.58 m³ (2.07 cu. yds.) concrete for 225 (9) pav't.
1.60 m³ (2.07 cu. yds.) concrete for 250 (10) pav't.

All dimensions are in millimeters (inches) unless otherwise shown.

OUTLETS FOR CONC. CURB AND GUTTER TYPE B-15.60 (B-6.24)

(Sheet 2 of 2)

STANDARD 606006

Illinois Department of Transportation
 PASSED January 1, 1997
 ENGINEER OF POLITICAL AND PROCEDURES
 APPROVED January 1, 1997
 ENGINEER OF DESIGN AND ENVIRONMENT