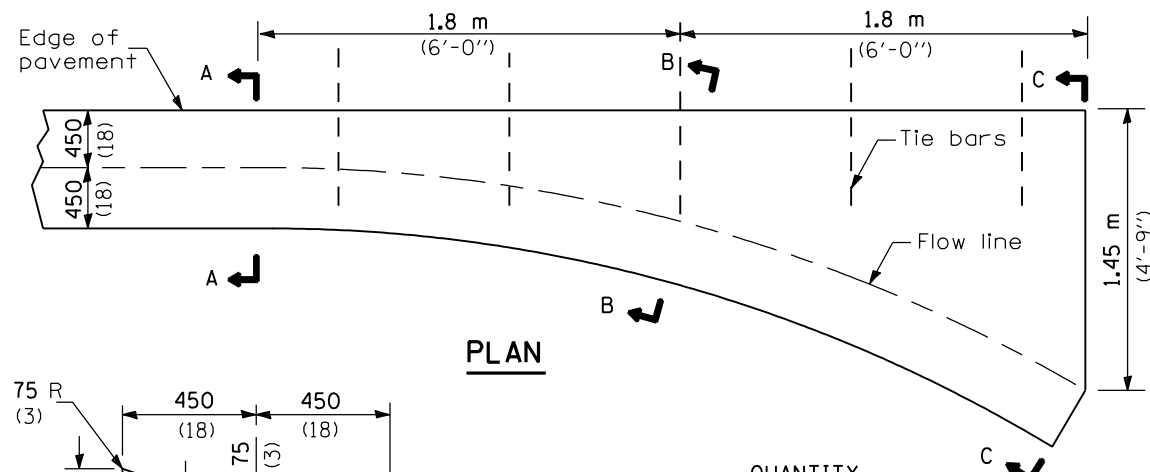
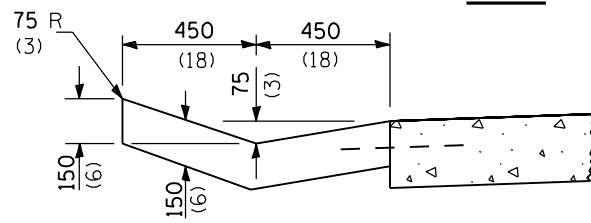


**TYPE A GUTTER**

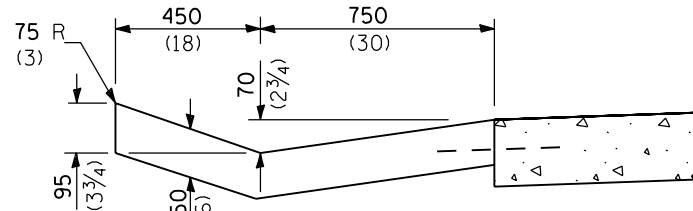


**PLAN**

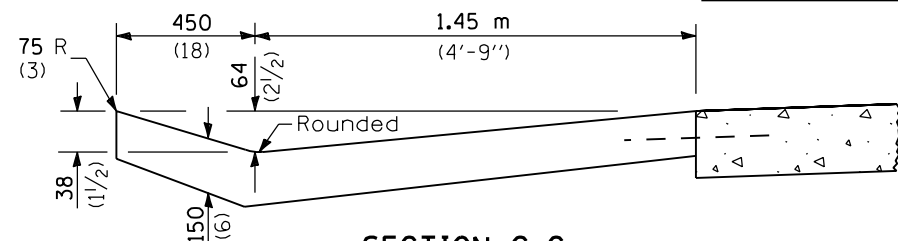


**SECTION A-A**

**QUANTITY**  
Section C-C to A-A  
0.70 m<sup>3</sup> (0.92 cu. yd.)  
concrete.

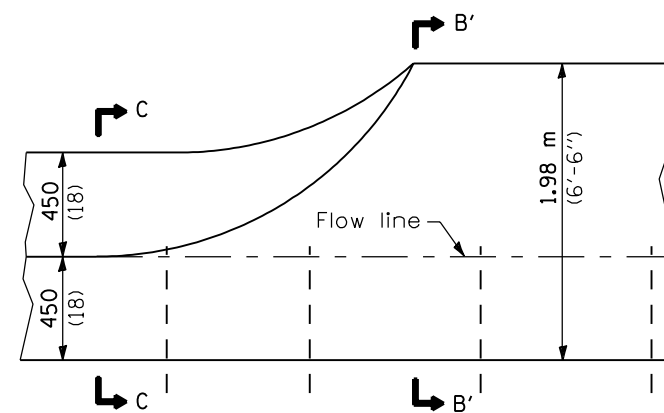


**SECTION B-B**

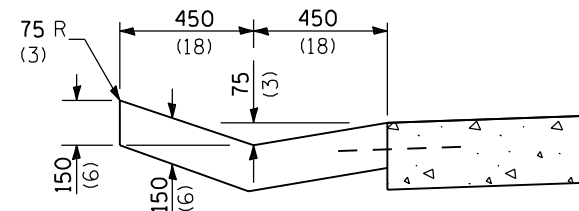


**SECTION C-C**

**INLET**

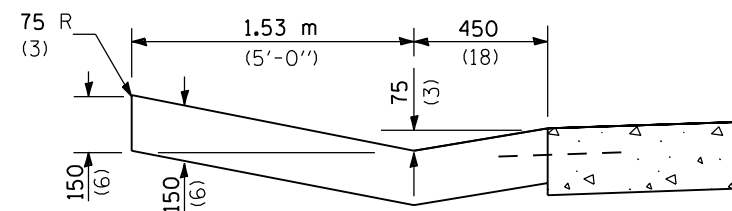


**PLAN**



**SECTION A-A & C-C**

**QUANTITY**  
Section B'-B' to B-B = 0.3 m<sup>3</sup>/m  
(0.12 cu. yd./ft.).  
Section C-C to B'-B' + B'-B' to  
A-A = 0.55 m<sup>3</sup> (0.72 cu. yd.).



**SECTION B-B & B'-B'**

**ENTRANCE**

**GENERAL NOTES**

Tie bars shall be No. 20 (No. 6) at 600 mm (24") centers unless otherwise shown.

Gutter, gutter inlet, gutter outlet and gutter entrance shall be tied to the pavement in accordance with details for longitudinal construction joint shown on Standard 420001.

Two 32 mm x 450 mm (1-1/4" x 18") dowel bars shall be installed in all joints when the gutter is constructed adjacent to flexible pavement.

All dimensions are in millimeters (inches) unless otherwise shown.

Illinois Department of Transportation

PASSED January 1, 1998

ENGINEER OF POLICE AND PROCEDURES

APPROVED January 1, 1998

ENGINEER OF DESIGN AND ENVIRONMENT

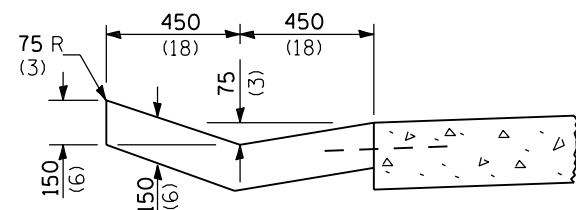
ISSUED 76-1-1

DATE	REVISIONS
1-1-98	Revise English values in SEC. D-D from 19" to 23" & 4'-7" to 5'-0".
1-1-97	Renum. Standard 1913-7.

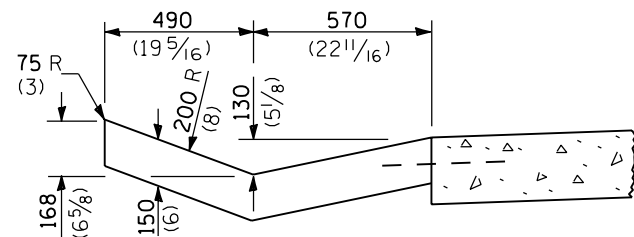
**TYPE A GUTTER (INLET, OUTLET & ENTRANCE)**

(Sheet 1 of 2)

**STANDARD 606101-01**

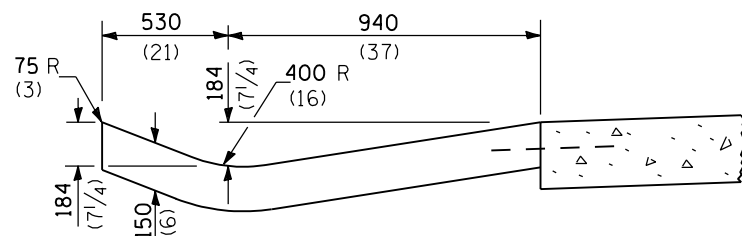


**SECTION A-A**

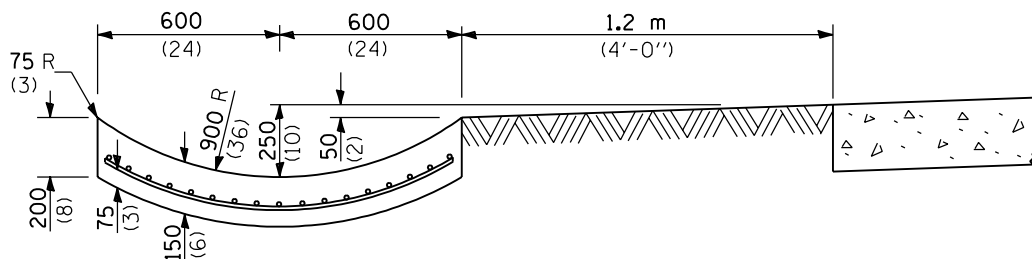


**SECTION B-B**

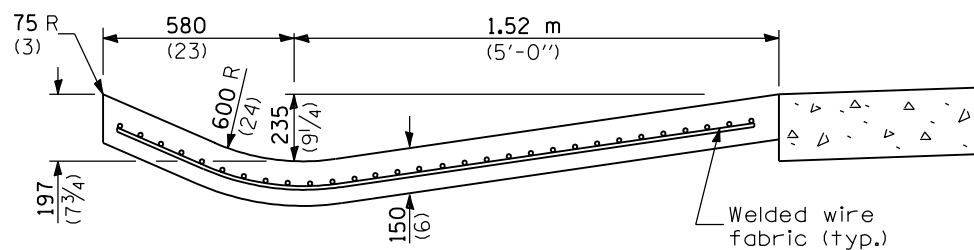
**QUANTITY**  
 Section A-A to E-E and curtain wall  
 2.70 m<sup>3</sup> (3.53 cu. yd.) concrete.  
 Section F-F = 0.2 m<sup>3</sup>/m  
 (0.079 cu. yd./ft.)



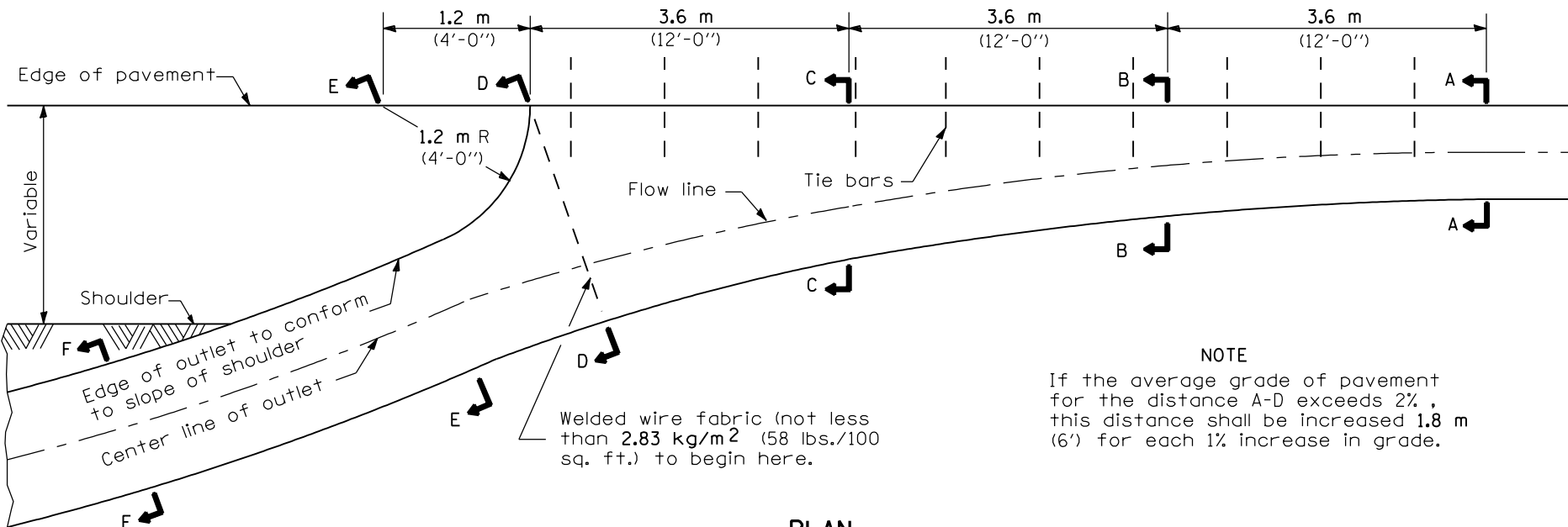
**SECTION C-C**



**SECTION E-E**

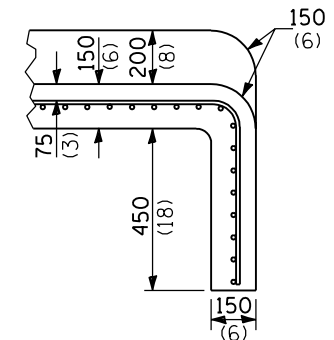
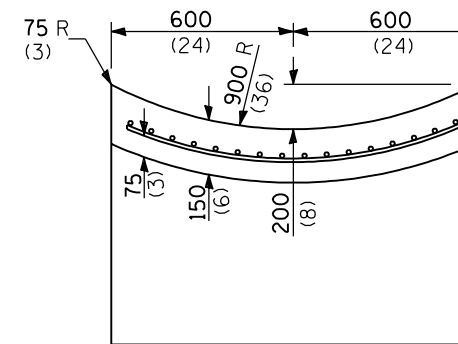


**SECTION D-D**

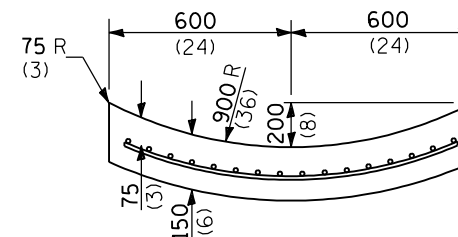


**PLAN**

**NOTE**  
 If the average grade of pavement for the distance A-D exceeds 2%, this distance shall be increased 1.8 m (6') for each 1% increase in grade.



**SECTIONS AT END OF OUTLET**



**SECTION F-F**

All dimensions are in millimeters (inches) unless otherwise shown.

**OUTLET**

**TYPE A GUTTER  
 (INLET, OUTLET & ENTRANCE)**

(Sheet 2 of 2)

**STANDARD 606101-01**

Illinois Department of Transportation

PASSED January 1, 1998

ENGINEER OF POLICE AND PROCEDURES

APPROVED January 1, 1998

ENGINEER OF DESIGN AND ENVIRONMENT

ISSUED 76-1-1