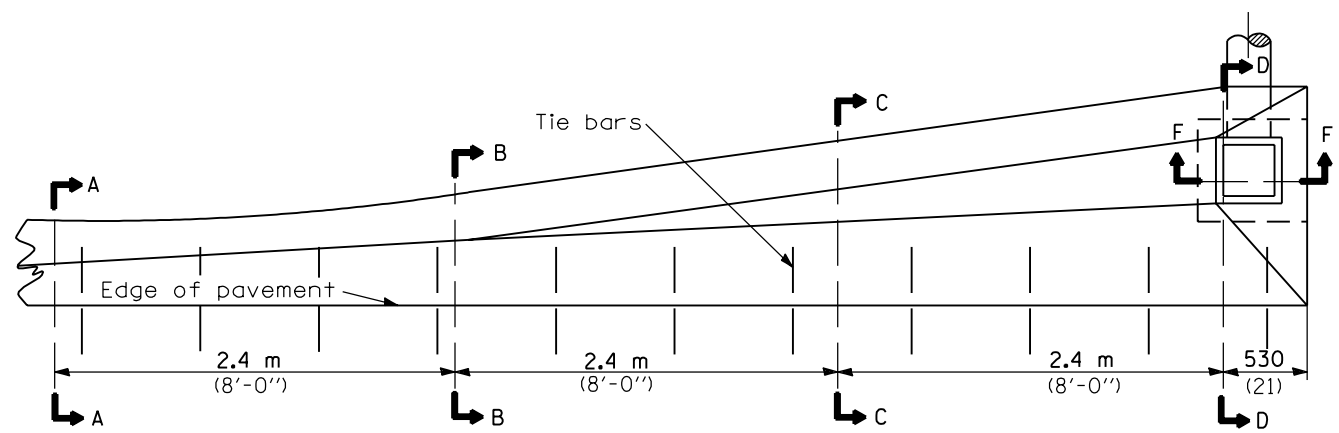
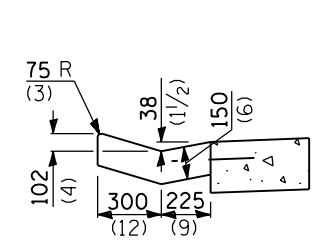


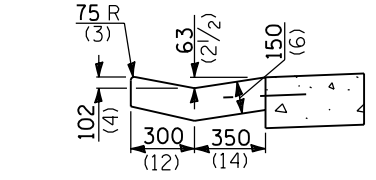
PLAN - DOUBLE OUTLET



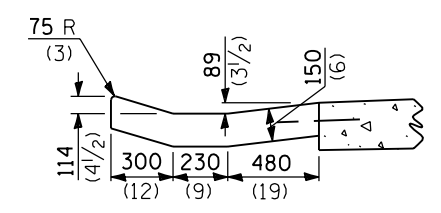
PLAN - SINGLE OUTLET



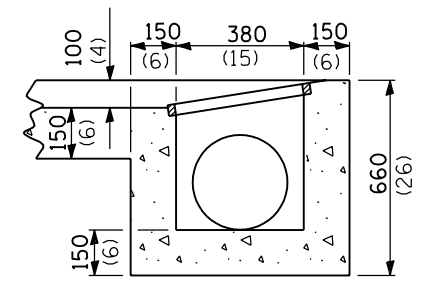
SECTION A-A



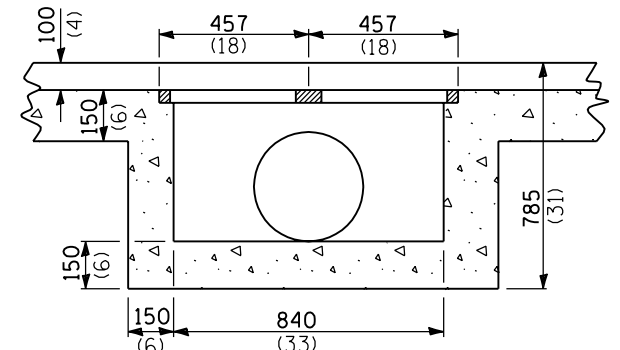
SECTION B-B



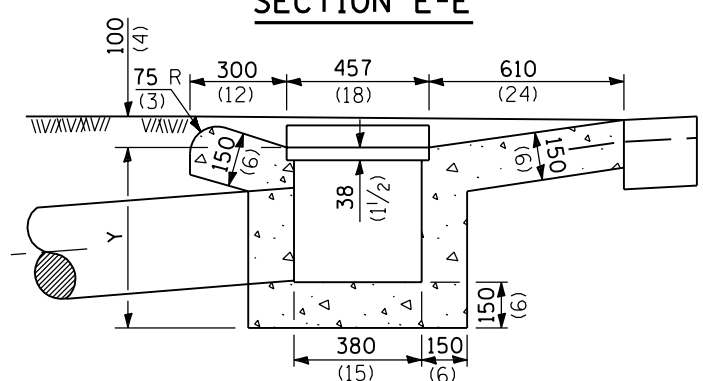
SECTION C-C



SECTION F-F

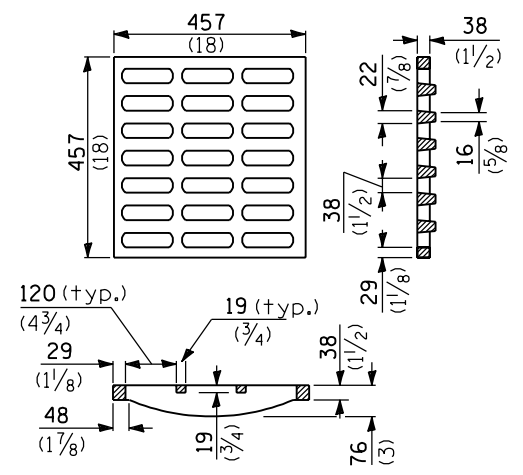


SECTION E-E



SECTION D-D

Single - Y = 560 (22)
Double - Y = 685 (27)



GRATE TYPE B

GENERAL NOTES

The gutter outlet shall be tied to the pavement in accordance with details for longitudinal construction joint shown on Standard 420001.

Tie bars shall be No. 20 (No. 6) at 600 mm (24") centers unless otherwise shown.

If the average grade of pavement for the distance A-D exceeds 2%, this distance shall be increased 1.8 m (6'-0") for each 1% increase in grade.

All dimensions are in millimeters (inches) unless otherwise shown.

QUANTITIES

Material	Single	Double
Concrete - m ³ (cu. yd.)	1.3 (1.7)	2.4 (3.1)
Cast Iron Grate - Ea. 37 kg (82 lbs.)	1	2
Pipe Drain - Dia. mm (in.)	300 (12)	375 (15)

DATE	REVISIONS
1-1-00	Changed 400 to 375 in Quantities Table
1-1-97	Renum. Standard 1795-7.

OUTLET TYPE 1 FOR TYPE B GUTTER

STANDARD 606206-01

Illinois Department of Transportation
 PASSED January 1, 2000
 ENGINEER OF POLICE AND PROCEDURES
 APPROVED January 1, 2000
 ENGINEER OF DESIGN AND ENVIRONMENT