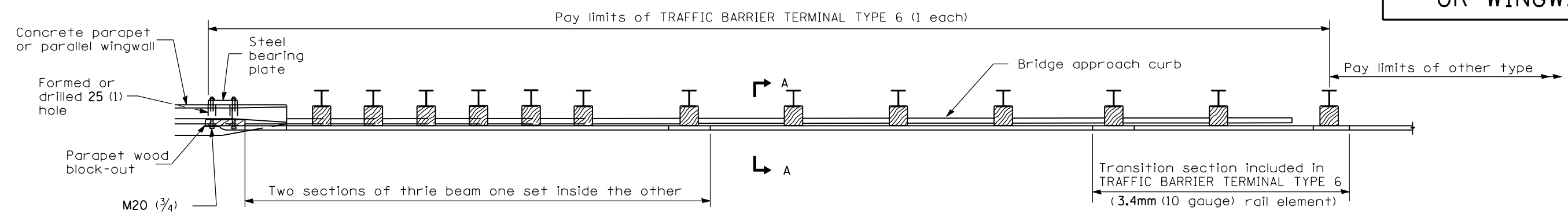
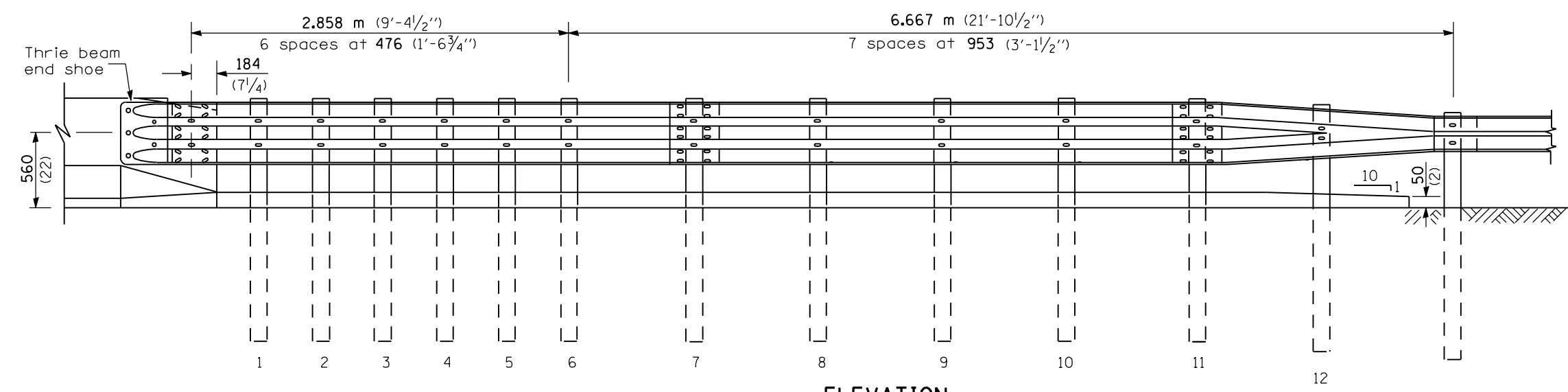


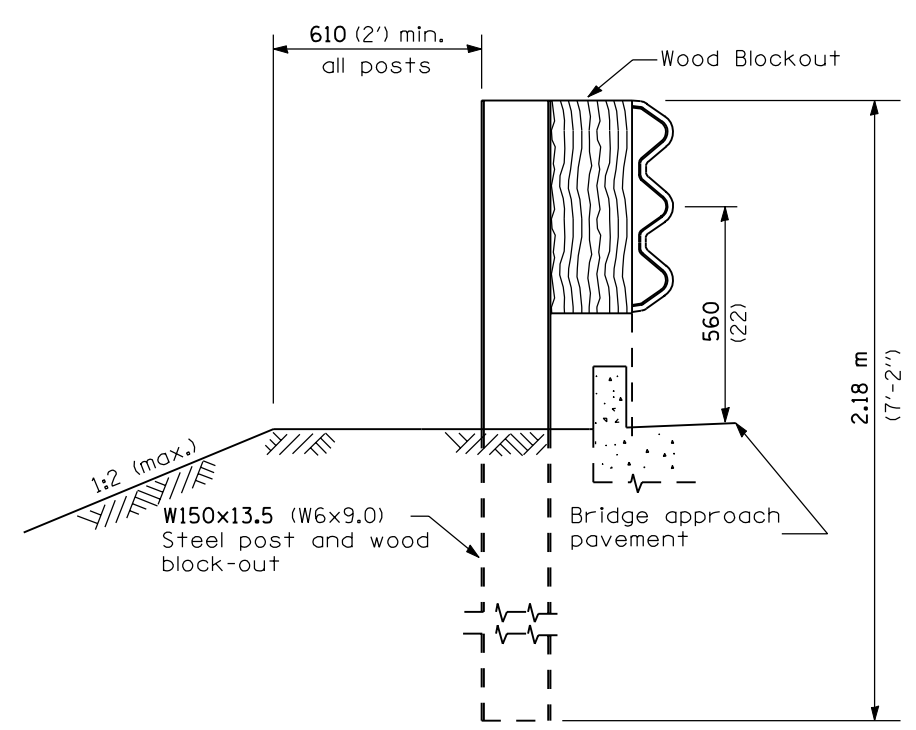
PARAPET OR WINGWALL



PLAN



ELEVATION



SECTION A-A

GENERAL NOTES

- See Standard 630001 for details of guardrail not shown.
- Thrie beam rail shall be bolted to block-out at all posts.
- See Standard 420401 for details of bridge approach pavement.
- All slope ratios are expressed as units of vertical displacement to units of horizontal displacement (V:H).
- All dimensions are in millimeters (inches) unless otherwise shown.

Illinois Department of Transportation

PASSED January 1, 2004

ENGINEER OF POLICY AND PROCEDURES
Michael Brand

APPROVED January 1, 2004

ENGINEER OF DESIGN AND ENVIRONMENT
Michael L. Hine

ISSUED 1-1-97

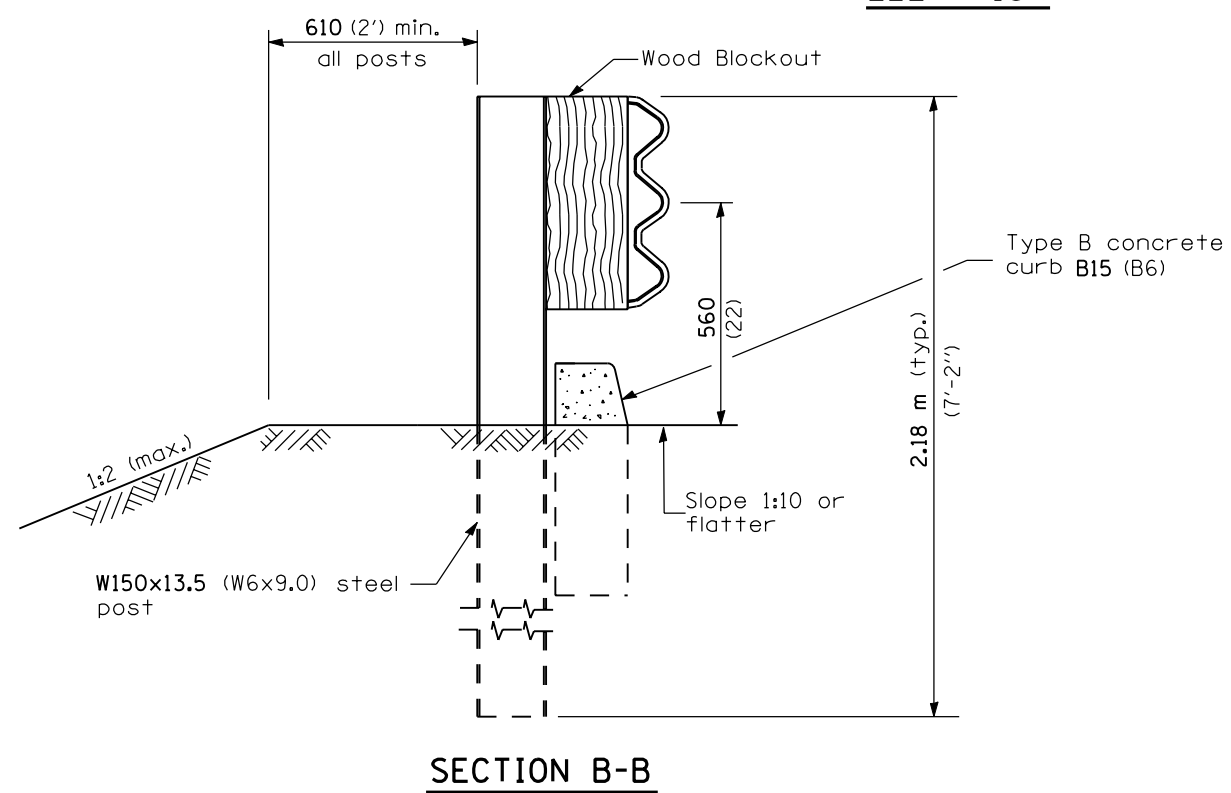
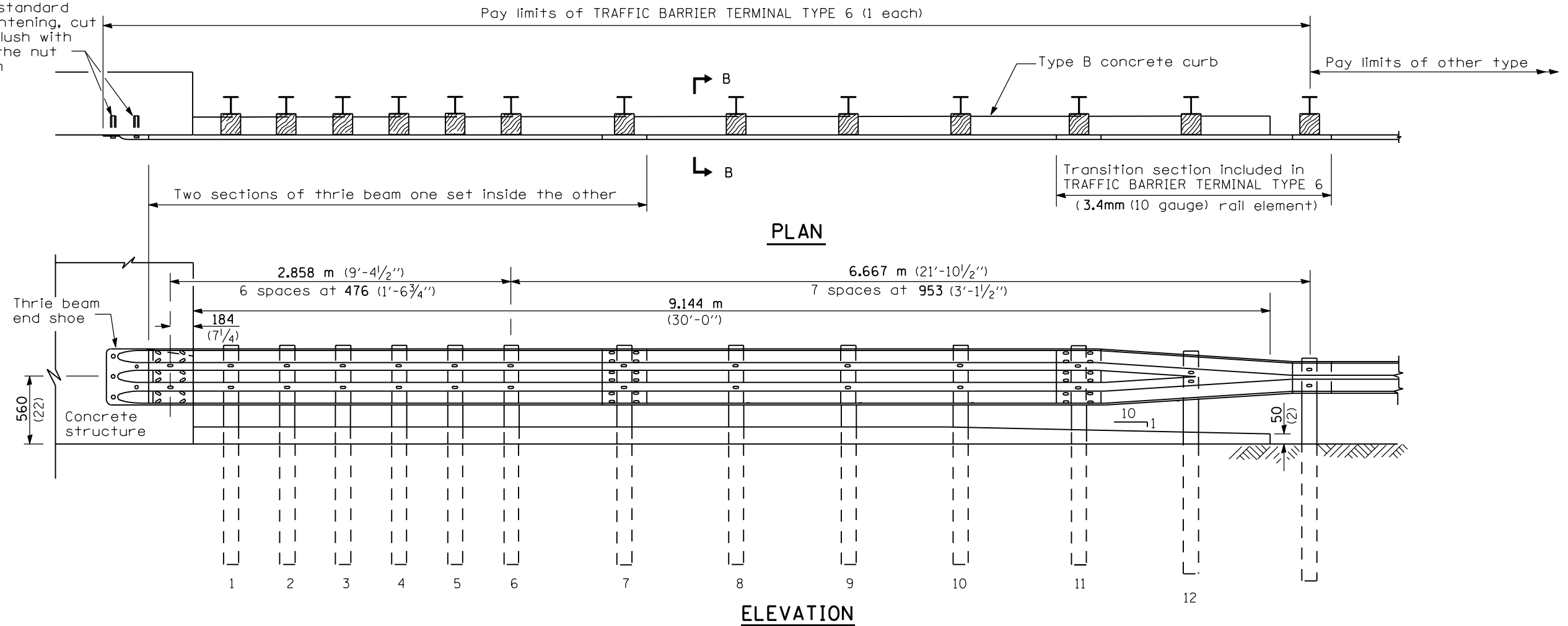
DATE	REVISIONS
1-1-04	Revised wood blockouts.
1-1-03	Revised to NCHRP 350 design post spacing and fastening.

TRAFFIC BARRIER TERMINAL, TYPE 6

Sheet 1 of 3

STANDARD 631031-05

5 Epoxy grouted M20 (3/4) anchor bolts with standard washers. After tightening, cut the anchor bolts flush with nuts, and damage the nut to prevent it from loosening.



Illinois Department of Transportation

PASSED January 1, 2004

Michael Beard
ENGINEER OF POLICY AND PROCEDURES

APPROVED January 1, 2004

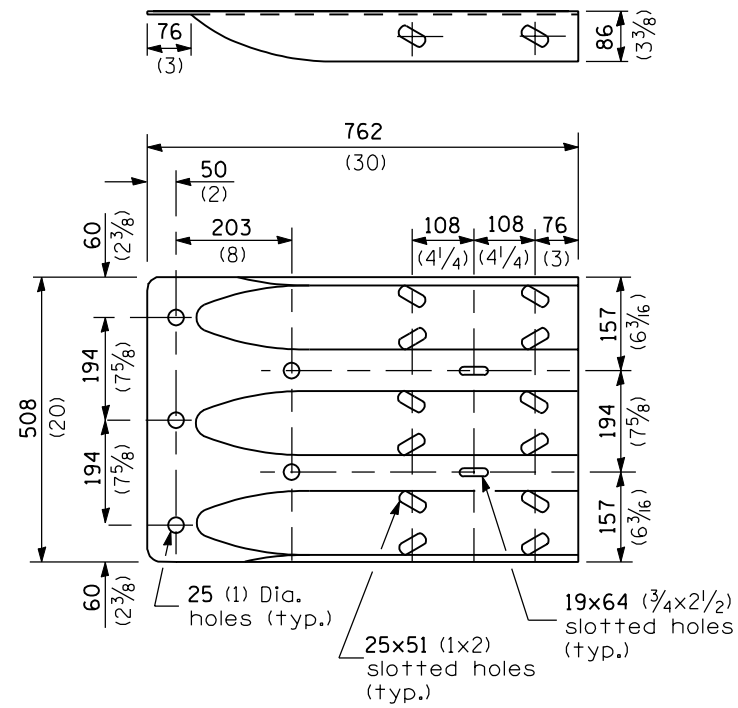
Michael L. Hine
ENGINEER OF DESIGN AND ENVIRONMENT

ISSUED 1-1-97

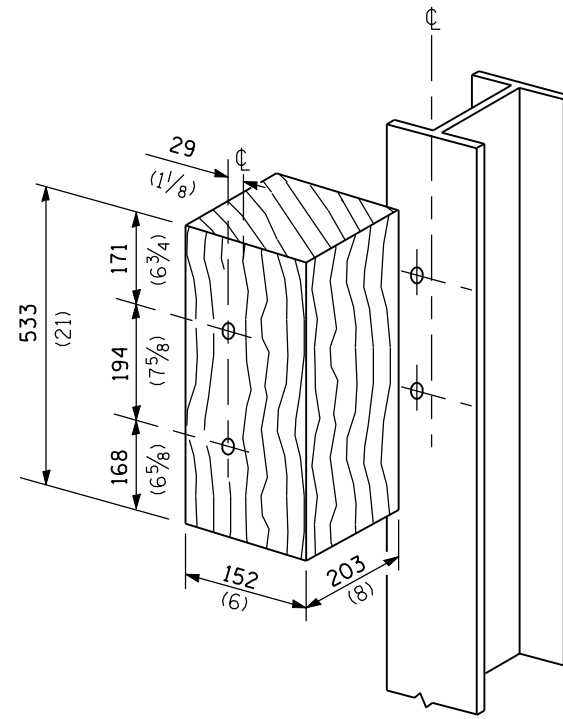
TRAFFIC BARRIER TERMINAL, TYPE 6

Sheet 2 of 3

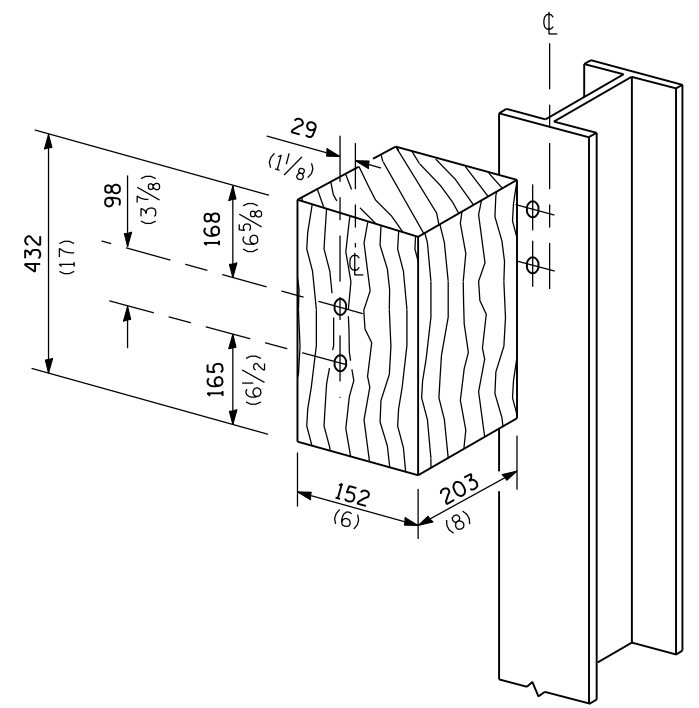
STANDARD 631031-05



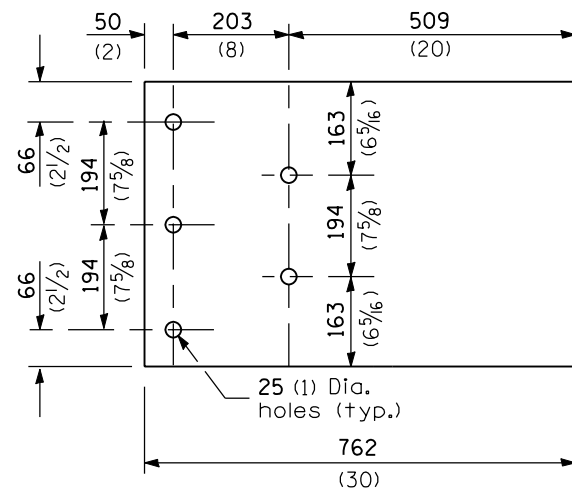
THRIE BEAM END SHOE DETAIL



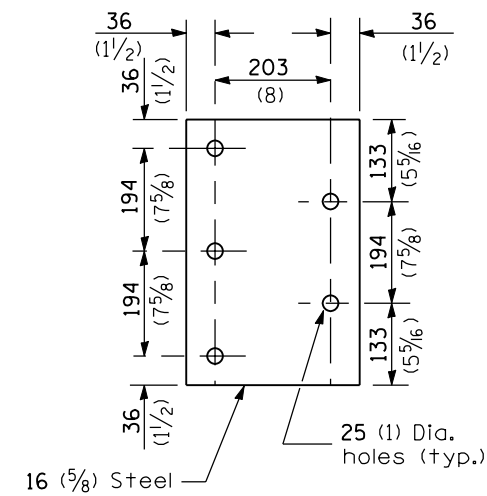
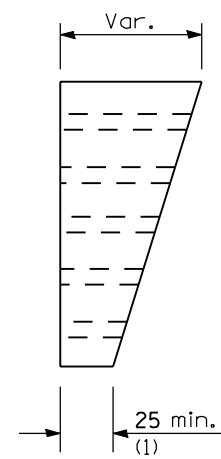
POSTS 1-11 WOOD BLOCKOUT DETAIL



POST 12 WOOD BLOCKOUT DETAIL



PARAPET WOOD BLOCK-OUT DETAIL



PARAPET STEEL BEARING PLATE DETAIL

(5 each individual 125x125x16 (5x5x5/8) steel plates with centered 25 (1) holes may be substituted for the plate shown.)

Illinois Department of Transportation

PASSED January 1, 2004

Michael Brand
ENGINEER OF POLICY AND PROCEDURES

APPROVED January 1, 2004

Michael L. Hine
ENGINEER OF DESIGN AND ENVIRONMENT

ISSUES
16-1-1 03551

**TRAFFIC BARRIER
TERMINAL, TYPE 6**

Sheet 3 of 3

STANDARD 631031-05