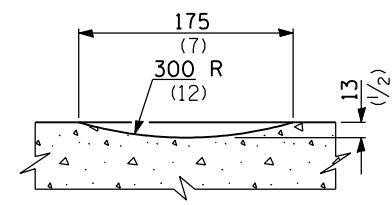
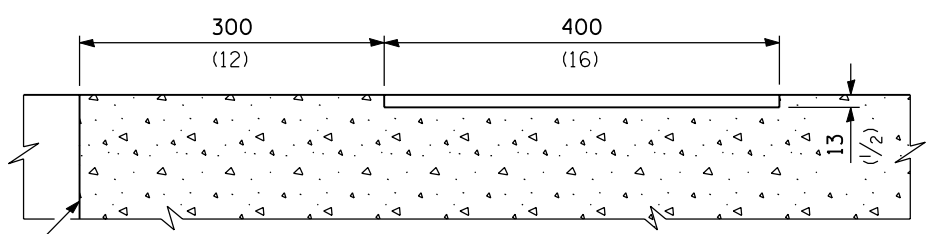


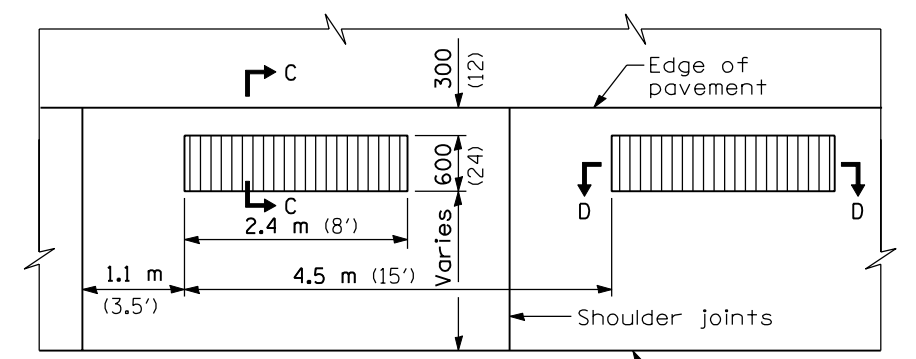
PLAN



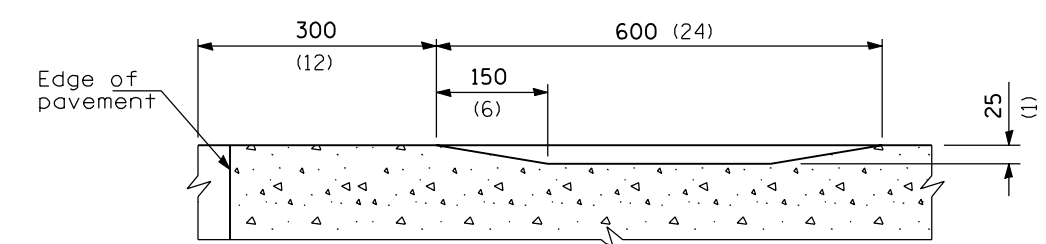
SECTION A-A



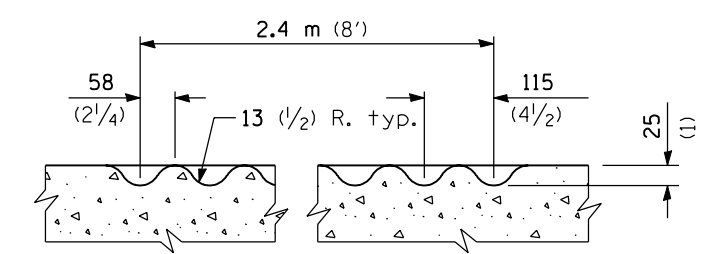
SECTION B-B



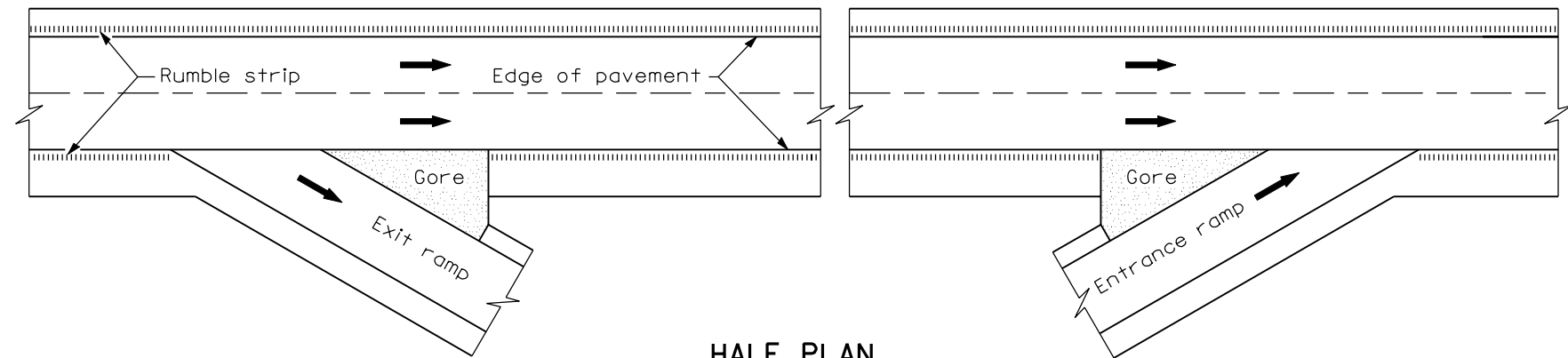
PLAN
(Formed Alternate for PCC Shoulders)



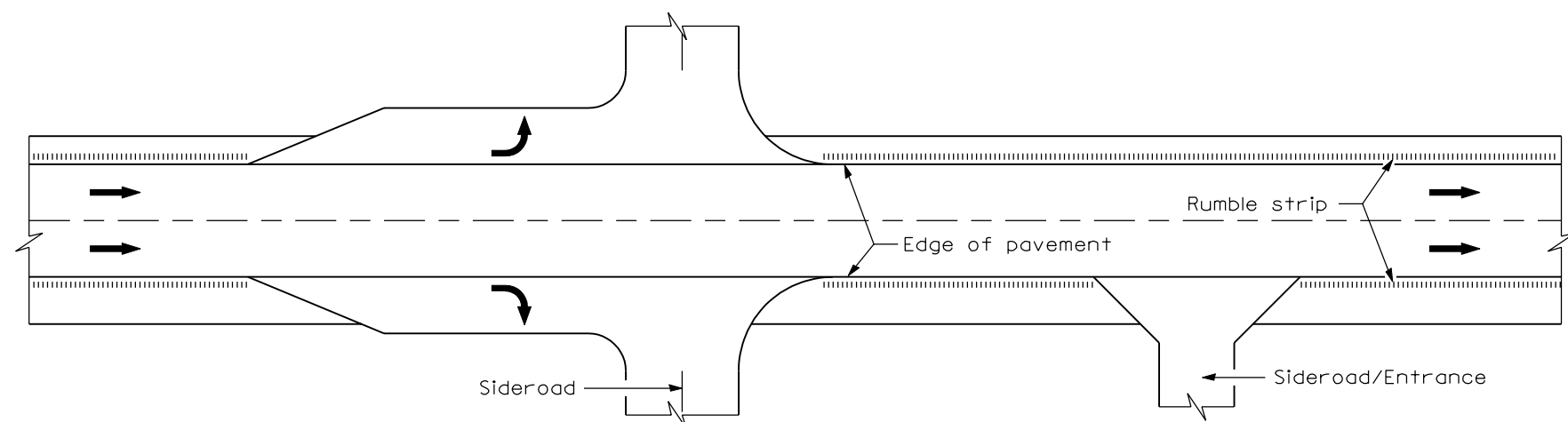
SECTION C-C



SECTION D-D



HALF PLAN
TYPICAL APPLICATION AT AN INTERCHANGE



HALF PLAN
TYPICAL APPLICATION AT AN INTERSECTION OR ENTRANCE

GENERAL NOTES

On Portland cement concrete shoulders, no shoulder rumble strip shall be located closer than 150 mm (6") to a transverse joint.

Omit shoulder rumble strips across structures.

All dimensions are in millimeters (inches) unless otherwise shown.

DATE	REVISIONS
1-1-03	Revised rumble strip design and renumbered Std. 402101
1-1-97	Renumbered Std. 2438-1

SHOULDER RUMBLE STRIPS

STANDARD 642001

Illinois Department of Transportation

PASSED January 1, 2003

ENGINEER OF POLICY AND PROCEDURES

APPROVED January 1, 2003

ISSUED 1-1-03