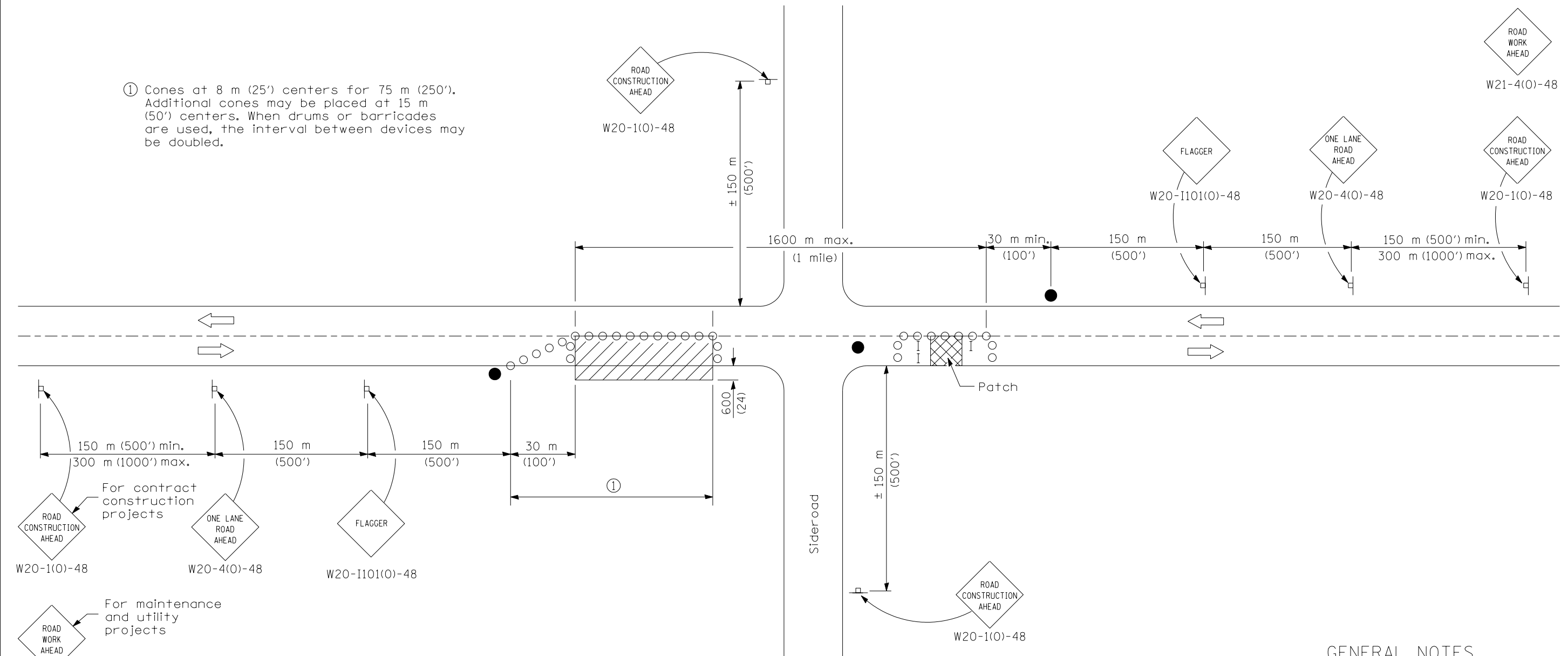







① Cones at 8 m (25') centers for 75 m (250'). Additional cones may be placed at 15 m (50') centers. When drums or barricades are used, the interval between devices may be doubled.



For contract construction projects
 ROAD CONSTRUCTION AHEAD W20-1(0)-48
 ONE LANE ROAD AHEAD W20-4(0)-48
 FLAGGER W20-1101(0)-48

For maintenance and utility projects
 ROAD WORK AHEAD W21-4(0)-48

SYMBOLS

-  Work area
-  Sign
-  Barricade or drum
-  Cone, drum or barricade
-  Flagger with traffic control sign

TYPICAL APPLICATIONS

- Isolated patching
- Utility operations
- Storm sewer
- Culverts
- Cable placement

GENERAL NOTES

This Standard is used where at any time, any vehicles, equipment, workers or their activities will encroach in the area between the center line and a line 600 mm (24") outside the edge of pavement for daylight operation.

When the distance between successive work areas exceeds 600 m (2000'), additional warning signs, flaggers, and taper shall be placed as shown.

All dimensions are in millimeters (inches) unless otherwise shown.

Illinois Department of Transportation

APPROVED January 1, 2005
 ENGINEER OF OPERATIONS

APPROVED January 1, 2005
 ENGINEER OF DESIGN AND ENVIRONMENT

ISSUED 1-1-97

DATE	REVISIONS
1-1-05	Revised title and notes. Moved flagger.
1-1-00	Rev. TYPICAL APPLICATION & detail of patch area.

LANE CLOSURE, 2L, 2W, DAY ONLY,
 FOR SPEEDS \geq 45 MPH

STANDARD 701201-02