

GENERAL NOTES

Maintenance operations shall be confined to one traffic lane, leaving the opposite lane open to traffic. At least 150 m (500') of both traffic lanes shall be available for traffic movement between work areas at intervals not greater than 300 m (1000').

- * Minimum distance between the sign and the work area is 215 m (700'). Maximum distance to be determined by the local authority but in no case to exceed the length of one-half day's operation or 6 km (4 miles), whichever is less.

When operations are on the pavement and stationary or moving at a speed less than 6 kph (4 mph), a ONE LANE AHEAD, or other appropriate sign, shall be installed in each direction between the ROAD WORK AHEAD sign and the work area. The distance between this sign and the work area shall be a minimum of 120 m (400') but in no case to exceed the length of one-half day's operation or 6 km (4 miles), whichever is less. The distance between the two signs shall be approximately 120 m (400').

All signs are to be removed at completion of the day's operation.

Any unattended obstacle, excavation or pavement drop off greater than 75 mm (3") in the work area shall be protected by Type I or Type II Barricades with flashing lights.

Longitudinal dimensions may be adjusted slightly to fit field conditions.

All vehicles, equipment, men, and their activities are restricted at all times to one side of the pavement.

Flashing lights or rotating beacons are required for all maintenance vehicles while in operation.

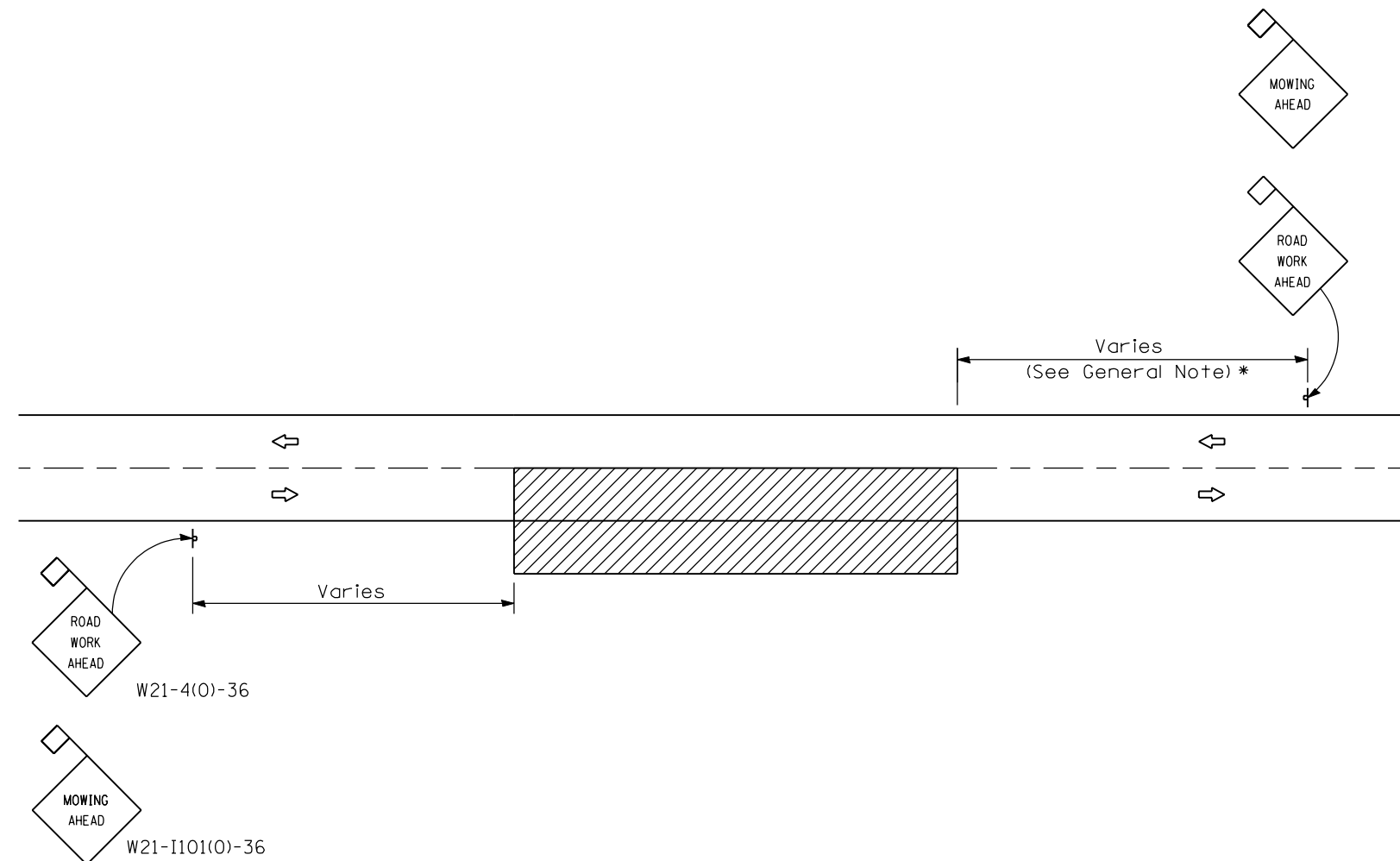
Applicable operations illustrated in Standard 701301 may be used when operations do not exceed 15 minutes on the pavement or 60 minutes on the shoulder respectively.

All warning signs shall have minimum dimensions of 900 mm x 900 mm (36"x36") and have black legend on an orange reflectorized background.

This case is for use on rural local roads where the local authority considers this protection to be appropriate for the specific job conditions.

When fluorescent signs are used orange flags are not required.

All dimensions are in millimeters (inches) unless otherwise shown.



TWO-LANE, TWO-WAY TRAFFIC
RURAL OPERATIONS
DAY OPERATIONS ONLY

SYMBOLS



Work area



Sign with 450 (18) by 450 (18)
(minimum) orange flag attached

TYPICAL APPLICATIONS

MOWING
SPREADING AGGREGATE
WEED SPRAYING
SURFACE MAINTENANCE
BITUMINOUS RESURFACING
CRACK POURING
SHOULDER REPAIR
CLEANING DITCHES

DATE	REVISIONS
1-1-99	Delete ROW Line.
1-1-98	Rev. lights.
	Rev. 1st, 2nd, 8th, and 10th General Notes.

TRAFFIC CONTROL
DEVICES-DAY LABOR
MAINTENANCE

STANDARD B.L.R. 18-4

Illinois Department of Transportation

APPROVED January 1, 1999
Donell W. Robinson
ENGINEER OF LOCAL ROADS AND STREETS

APPROVED January 1, 1999
Bill Swinley
ENGINEER OF DESIGN AND ENVIRONMENT

ISSUED 1-1-97