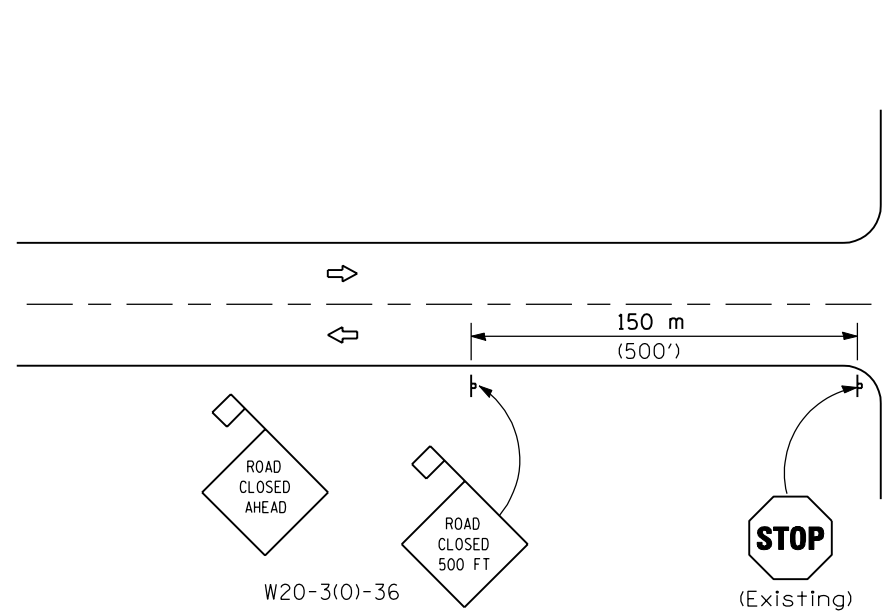
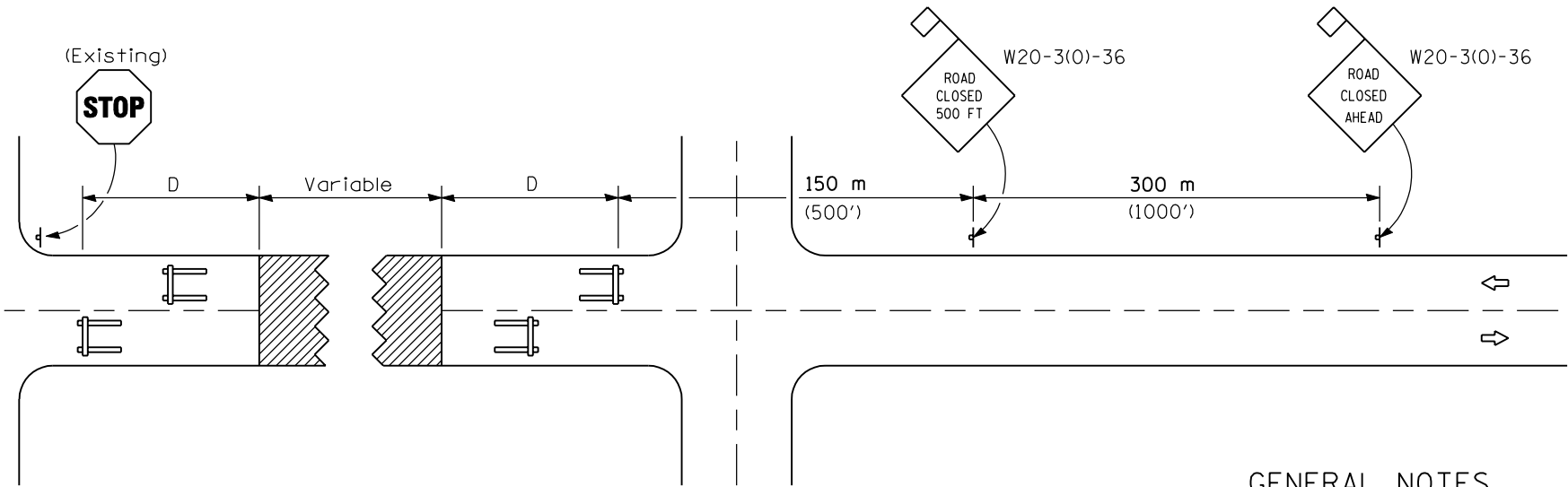


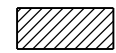
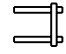

**CONDITION I
APPROACH TRAFFIC STOPPED**



**CONDITION II
APPROACH TRAFFIC
DOES NOT STOP**



SYMBOLS

-  Work area
-  Type III Barricade
-  Sign with 450 (18) by 450 (18) (minimum) orange flag attached

GENERAL NOTES

Type III Barricades and R11-4-4830 signs shall be positioned as shown in "Road Closed To All Traffic" detail on Highway Standard 702001. If the distance "D" exceeds 600 m (2000') an additional set of barricades and R11-4-4830 shall be placed at each end of the work area.

Two Type A Low Intensity Flashing Lights shall be used on each approach in advance of the work area. One light shall be installed above each barricade. If only one barricade is required, the other light shall be installed above the first advance warning sign.

All signs shall be post mounted if the closure time exceeds four days.

All warning signs shall have minimum dimensions of 900 mm (36") by 900 mm (36") and have a black legend on an orange reflectorized background.

All work zone signs are required to meet, as a minimum, Type B reflectivity requirements of Table 1091-2 in Article 1091.02 of the Standard Specifications.

Longitudinal dimensions may be adjusted to fit field conditions.

When fluorescent signs are used, orange flags are not required.

All dimensions are in millimeters (inches) unless otherwise shown.

Illinois Department of Transportation

APPROVED January 1, 2003
Donald W. McQuinn
ENGINEER OF LOCAL ROADS AND STREETS

APPROVED January 1, 2003
Michael L. Hine
ENGINEER OF DESIGN AND ENVIRONMENT

ISSUED 1-1-97

DATE	REVISIONS
1-1-03	Revised specification reference in 5th
	General Note.
1-1-98	Removed lights.
	Rev. 5th General Note.
	Added 7th General Note.

TYPICAL APPLICATION OF TRAFFIC CONTROL DEVICES FOR CONSTRUCTION ON RURAL LOCAL HIGHWAYS (TWO-LANE TWO WAY RURAL TRAFFIC) (ROAD CLOSED TO THRU TRAFFIC)

STANDARD B.L.R. 22-4