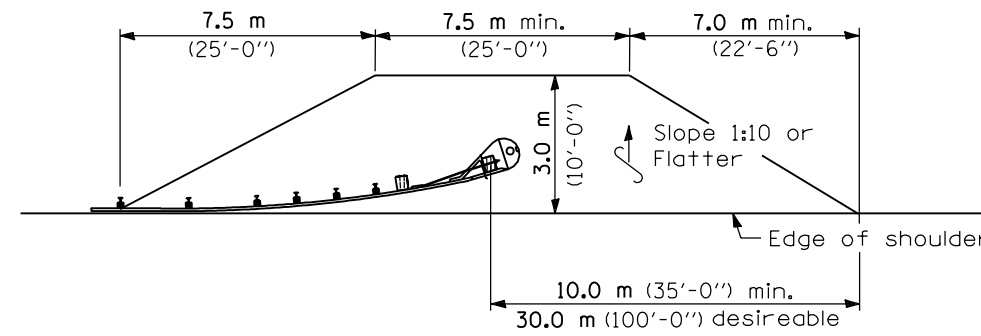
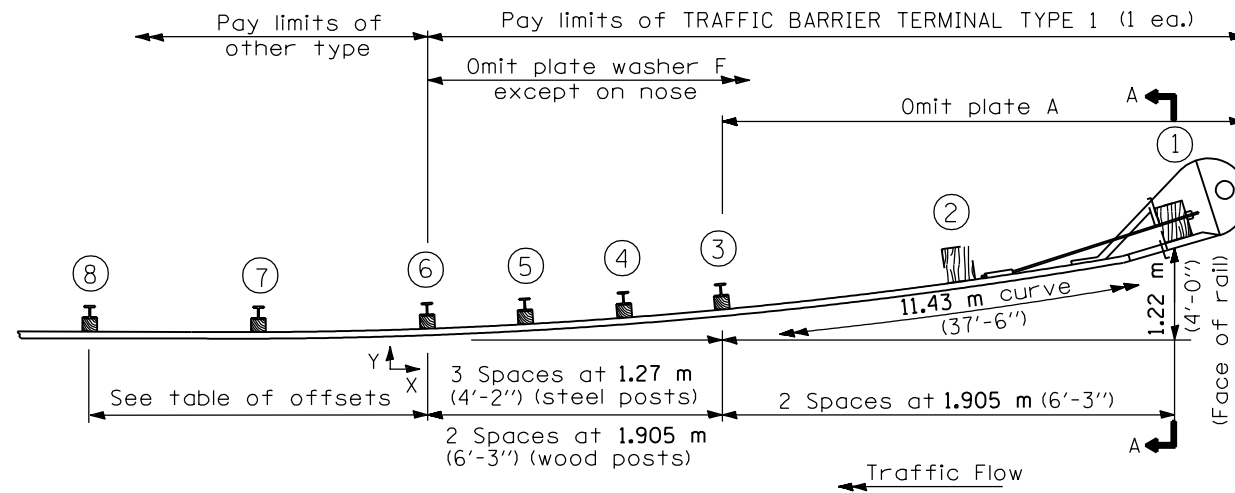


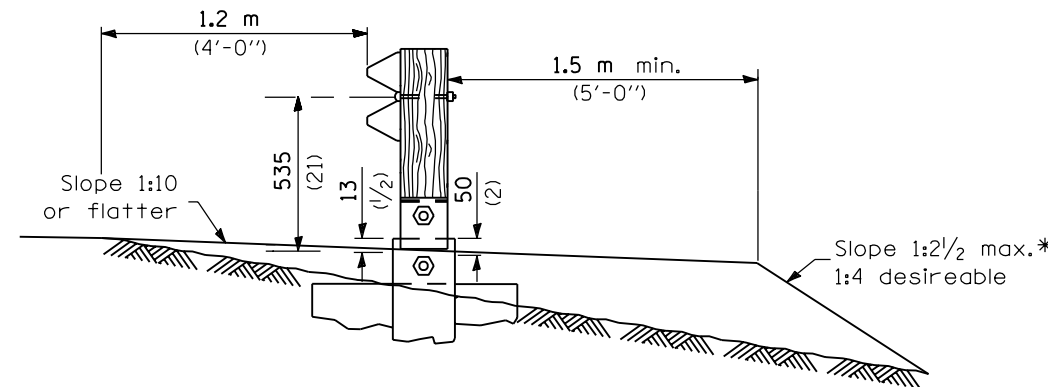
OFFSETS TO FACE OF RAIL		
Post	X (m) (ft)	Y (m) (ft)
①	11.345 (37.22)	1.22 (4.0)
②	9.475 (31.09)	0.850 (2.79)
③	7.595 (24.92)	0.545 (1.79)
④	6.335 (20.79)	0.380 (1.25)
⑤	5.070 (16.64)	0.245 (0.80)
⑥	3.805 (12.49)	0.135 (0.45)
⑦	1.905 (6.25)	0.035 (0.11)
⑧	0 (0.00)	0 (0.00)



SHOULDER WIDENING TRANSITION

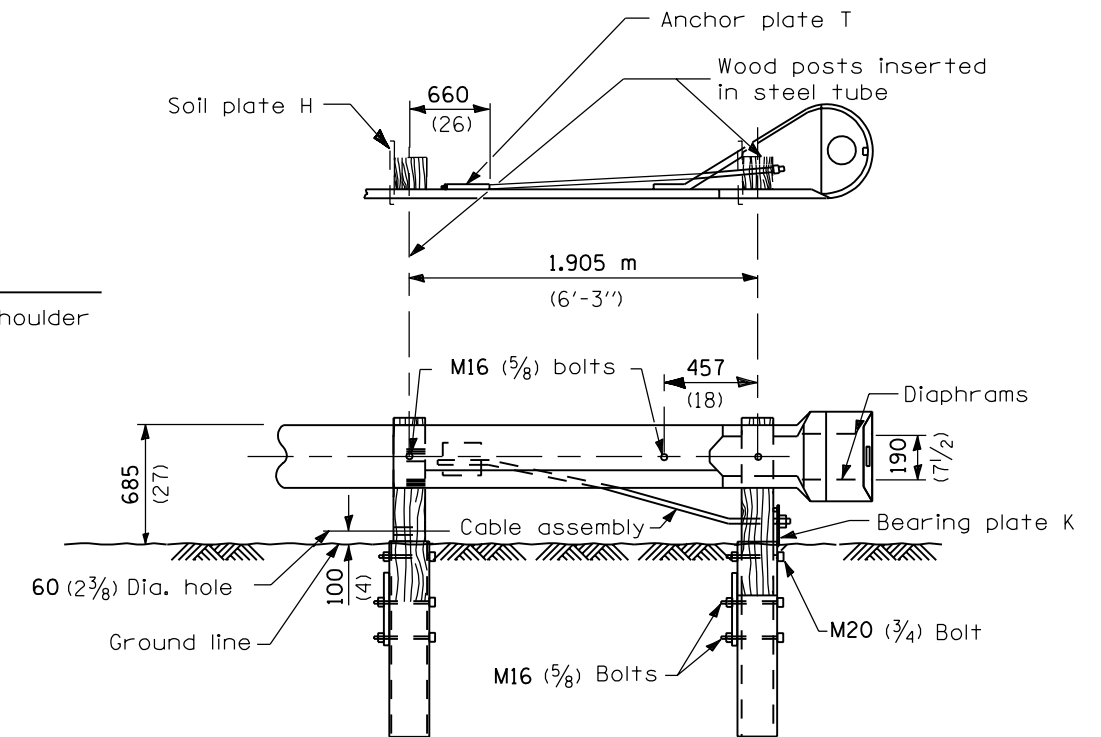


PLAN



SECTION A-A

* If fill height exceeds 1.5 m (5'-0") use 1:3 max.



**WOOD BREAKAWAY POSTS
TUBULAR STEEL FOUNDATIONS**

GENERAL NOTES

See Standard 630001 for details of guardrail not shown.

Posts at location 1 & 2 shall be wood breakaway posts. Posts other than 1 & 2 may be either standard wood posts or steel posts, at the option of the Contractor. If standard wood posts are used, one post shall be located midway between and in lieu of posts 4 & 5. The offset (Y) for this post shall be 300 mm (12 inches).

A two-piece assembly may be substituted for the one piece nose shown above.

The bearing plate K shall be held in position by (2) two eightpenny nails driven into the post and bent over the top of the plate.

All slope ratios are expressed as units of vertical displacement to units of horizontal displacement (V:H).

All dimensions are in millimeters (inches) unless otherwise shown.

DATE	REVISIONS
1-1-00	Revised block-outs to wood.
1-1-97	Renum. Standard

**TRAFFIC BARRIER
TERMINAL TYPE 1**

(Sheet 1 of 2)

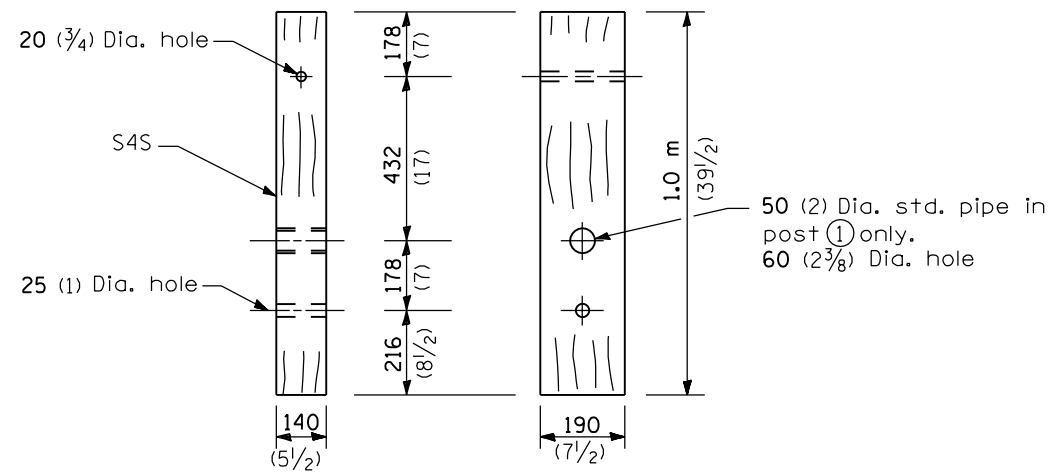
STANDARD B.L.R. 23-1

Illinois Department of Transportation

APPROVED January 1, 2000
Donnell W. McQuinn
 ENGINEER OF LOCAL ROADS AND STREETS

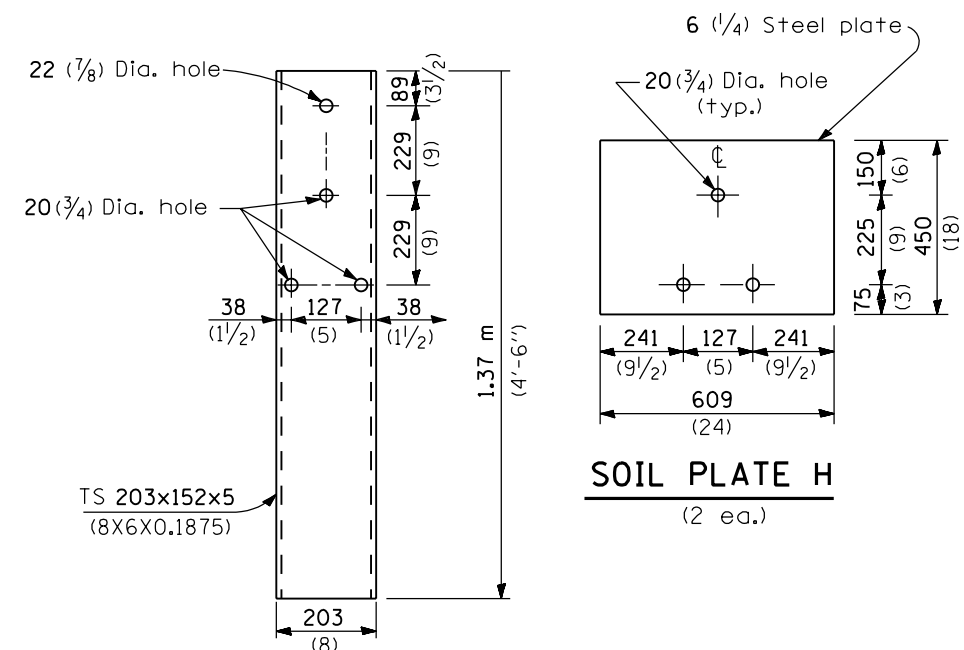
APPROVED January 1, 2000
Bill Sunkler
 ENGINEER OF DESIGN AND ENVIRONMENT

ISSUED 1-1-97



WOOD BREAKAWAY POST

(2 ea.)

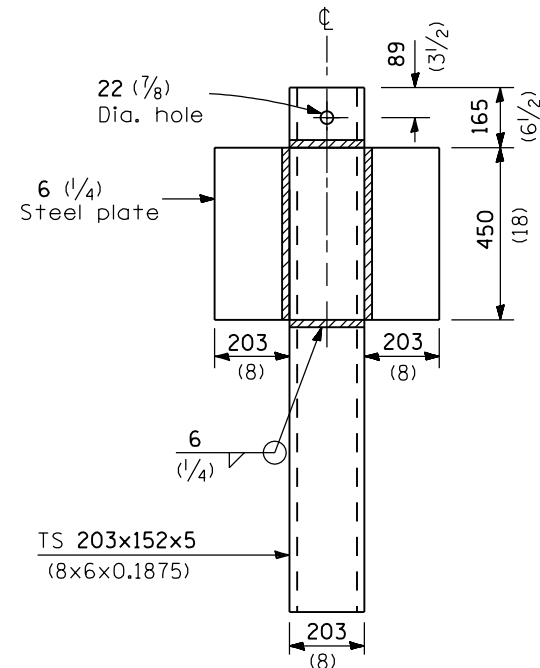


STEEL TUBE

(2 ea.)

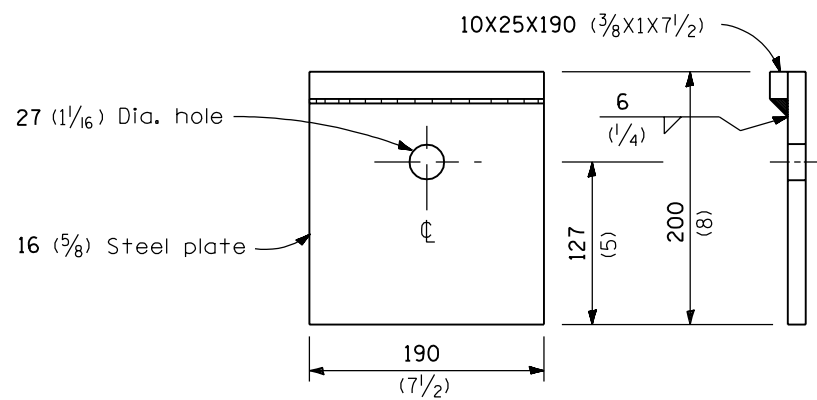
SOIL PLATE H

(2 ea.)



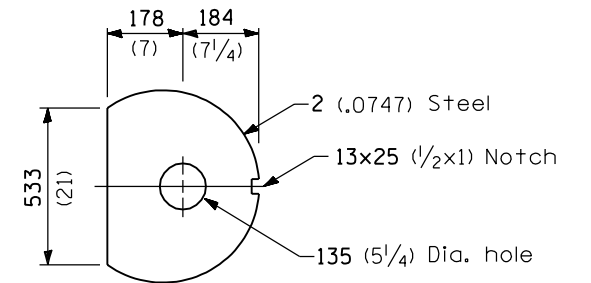
ALTERNATE SOIL PLATE CONNECTION

(1 ea.)



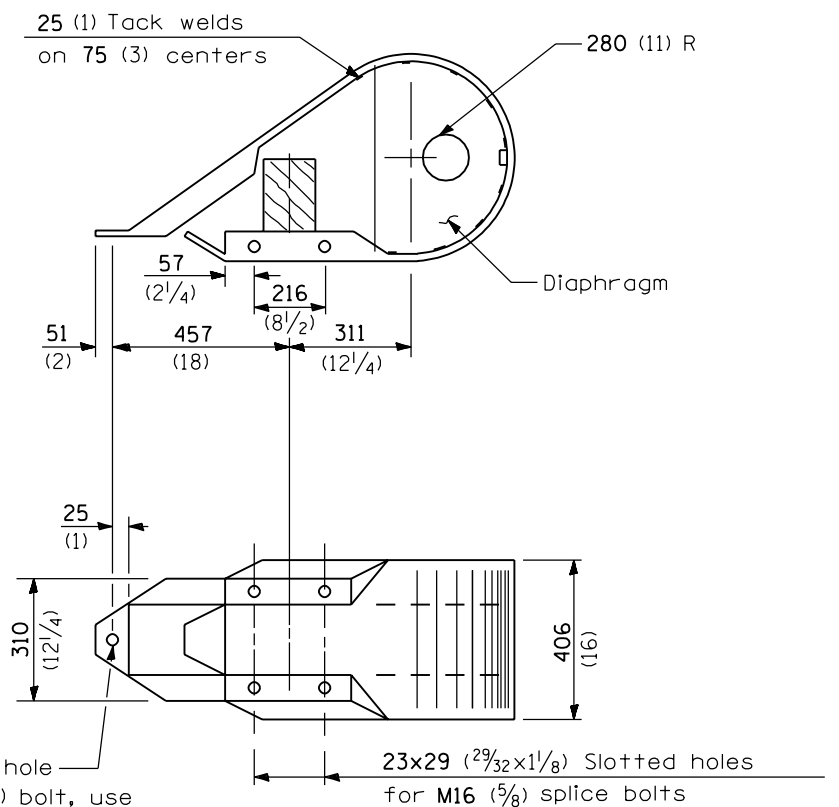
BEARING PLATE K

(1 ea.)



DIAPHRAGM

(2 ea.)



NOSE

(1 ea.)

All dimensions are in millimeters (inches) unless otherwise shown.

TRAFFIC BARRIER TERMINAL TYPE 1

(Sheet 2 of 2)

STANDARD B.L.R. 23-1

Illinois Department of Transportation

APPROVED January 1, 2000

Donnell W. McCrummy
ENGINEER OF LOCAL ROADS AND STREETS

APPROVED January 1, 2000

Bill Hunter
ENGINEER OF DESIGN AND ENVIRONMENT

ISSUED 16-1-1