

STATE OF ILLINOIS
DEPARTMENT OF TRANSPORTATION
DIVISION OF HIGHWAYS

**IDOT /IDNR STATEWIDE
MISSISSIPPI PALISADES STATE PARK
PARK ROADS (NORTH SLOPE ROAD)
SECTION PARK ROADS-1
IDOT PROJECT NO. C-30-030-09
IDNR PROJECT NO. 1-08-001 B
CARROLL COUNTY**

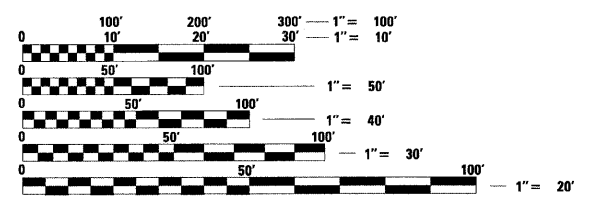
| | | | | |
|---------------------|------------------|--------------------|--------------|-----------|
| F.A. RTE. | SECTION | COUNTY | TOTAL SHEETS | SHEET NO. |
| | NORTH SLOPE ROAD | CARROLL | 24 | 1 |
| FED. ROAD DIST. NO. | ILLINOIS | CONTRACT NO. 46030 | | |

INDEX OF SHEETS

- 1 COVER SHEET
- 2 SUMMARY OF QUANTITIES
- 3 TYPICAL SECTIONS
- 4 GENERAL NOTES AND LEGEND
- 5-6 SCHEDULE OF QUANTITIES
- 7 CONTROL SURVEY TIES
- 8 LOCATION MAP AND TRAFFIC CONTROL PLAN
- 9-11 PLAN AND PROFILE SHEETS NORTH ROAD
- 12 PLAN SHEET NORTH ROAD AND TEMPORARY ACCESS ROAD
- 13 PLAN AND PROFILE SHEET TEMPORARY ACCESS ROAD
- 14-15 EROSION CONTROL PLANS
- 16 DRAINAGE STRUCTURES & MISCELLANEOUS DETAILS
- 17-24 CROSS SECTIONS
- DISTRICT DETAILS

STATE STANDARDS

| | |
|-----------|-----------|
| 000001-05 | 701006-03 |
| 280001-05 | 701201-03 |
| 542301-02 | 701301-03 |
| 602401-02 | 701326-03 |
| 602601-02 | 701901-01 |
| 602701-02 | 780001-02 |
| 604001-03 | BLR 21-8 |
| 604006-04 | BLR 22-6 |
| 606001-04 | |

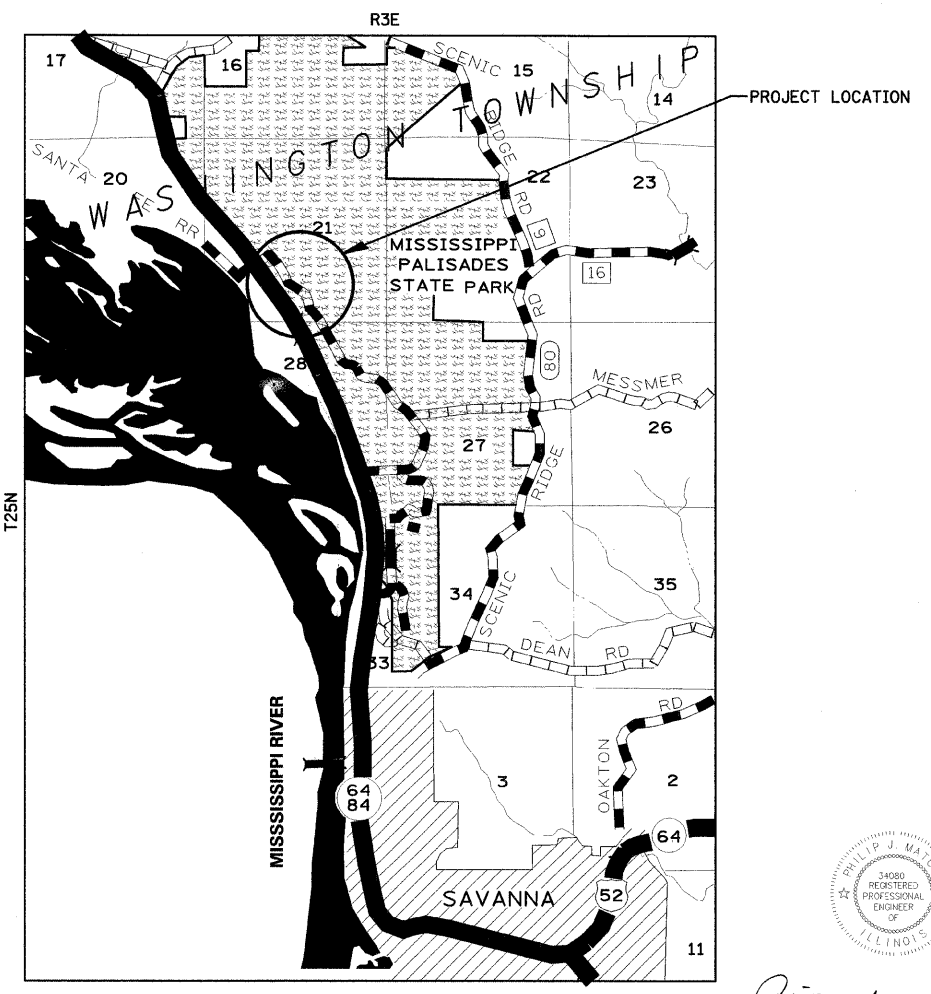


FULL SIZE PLANS HAVE BEEN PREPARED USING STANDARD ENGINEERING SCALES. REDUCED SIZED PLANS WILL NOT CONFORM TO STANDARD SCALES. IN MAKING MEASUREMENTS ON REDUCED PLANS, THE ABOVE SCALES MAY BE USED.

J.U.L.I.E.
JOINT UTILITY LOCATION INFORMATION FOR EXCAVATION
1-800-892-0123
OR 811

PROJECT ENGINEER
PROJECT MANAGER

CONTRACT NO. 46030



LOCATION MAP

GROSS LENGTH = 2,012.18 FT. = 0.381 MILES
NET LENGTH = 2,012.18 FT. = 0.381 MILES

Philip J. Matone 12/22/2009
SIGNATURE
EXPIRATION DATE NOV. 30, 2011

STATE OF ILLINOIS
DEPARTMENT OF TRANSPORTATION
DIVISION OF HIGHWAYS

SUBMITTED *February 15, 2010*
William R. Fry
DEPUTY DIRECTOR OF HIGHWAYS, REGION ENGINEER

March 19, 2010
Scott E. Stitt P.E.
ENGINEER OF DESIGN AND ENVIRONMENT

March 19, 2010
Christine M. Reed
DIRECTOR OF HIGHWAYS, CHIEF ENGINEER

**PRINTED BY THE AUTHORITY
OF THE STATE OF ILLINOIS**

P:\2009-2010\IDNR\20090301_Mississippi Palisades\2009