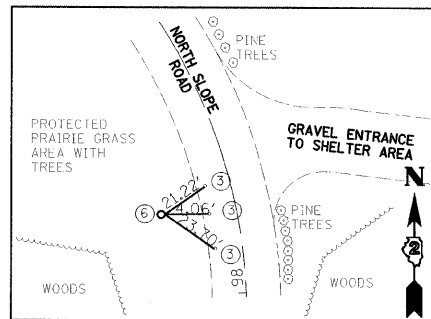
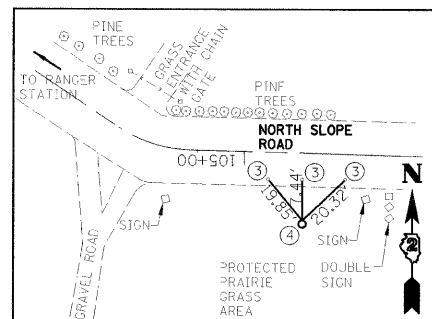


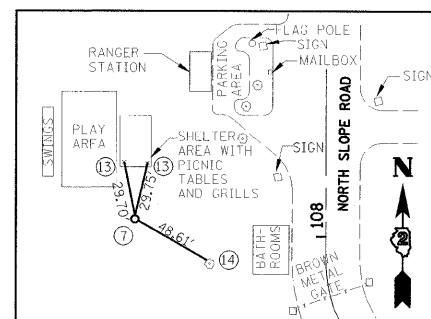
CONTROL PT #10000
(IRON PIPE WITH CAP)
N 1993386.336
E 2297679.965



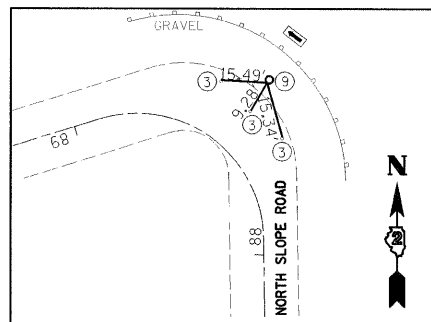
CONTROL PT #GPS 10002
(IRON PIPE WITH CAP)
N 1994410.890
E 2297515.108



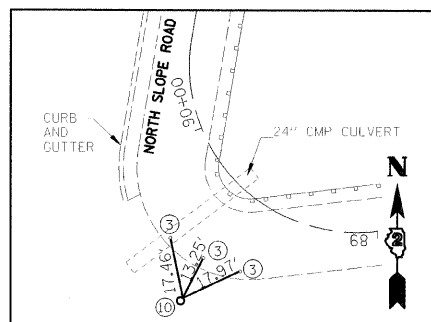
CONTROL PT #GPS 10003
(IRON PIPE WITH CAP)
N 1994566.076
E 2296960.981



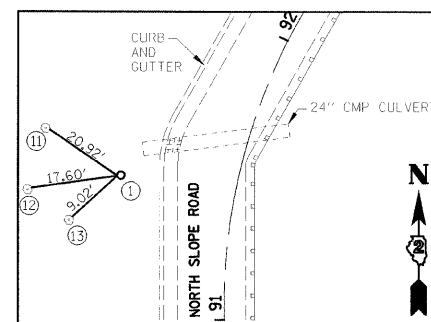
CONTROL PT #GPS 10009
(IRON PIPE WITH CAP)
N 1994668.639
E 2296539.907



CONTROL PT #10569
(IRON PIPE WITH CAP)
N 1993656.998
E 2297693.434



CONTROL PT #10673
(IRON PIPE WITH CAP)
N 1993562.683
E 2297546.703



CONTROL PT #10874
(IRON PIPE WITH CAP)
N 1993759.349
E 2297453.294

LEGEND

- | | |
|--|--|
| 1. IRON PIPE WITH CAP ± 4' FROM EDGE OF PAVEMENT, FLUSH. | 8. MAG NAIL ± 3' HIGH IN SOUTHWEST SIDE 15" DIAMETER TREE. |
| 2. MAG NAIL IN WEST SIDE OF EAST SIGN POST ± 1' HIGH. | 9. IRON PIPE WITH CAP ± 8' FROM EDGE OF PAVEMENT. |
| 3. MAG NAIL ± 1' FROM EDGE OF PAVEMENT. | 10. IRON PIPE ± 11' FROM EDGE OF PAVEMENT. |
| 4. IRON PIPE WITH CAP ± 6' FROM EDGE OF PAVEMENT, FLUSH. | 11. MAG NAIL IN SOUTHWEST SIDE OF TREE. |
| 5. IRON PIPE WITH CAP ± 3' FROM EDGE OF PAVEMENT, FLUSH. | 12. MAG NAIL IN NORTH SIDE OF TREE. |
| 6. IRON ROD WITH CAP, FLUSH. | 13. MAG NAIL IN NORTH WEST SIDE OF TREE. |
| 7. CHISELED '+' IN CONCRETE. | |

LAYOUT COORDINATE SCHEDULE

POINT	NORTHING	EASTING	DESCRIPTION/ REMARKS
10000	1993386.336	2297679.965	IRON PIPE WITH CAP
10002	1994410.890	2297515.108	IRON PIPE WITH CAP
10003	1994566.076	2296960.981	IRON PIPE WITH CAP
10009	1994668.639	2296539.907	IRON PIPE WITH CAP
10569	1993656.998	2297693.434	IRON PIPE WITH CAP
10673	1993562.683	2297546.703	IRON PIPE WITH CAP
10874	1993759.349	2297453.294	IRON PIPE WITH CAP

CONTROL POINTS ARE ALSO SHOWN ON LOCATION MAP AND TRAFFIC CONTROL PLAN FOR GENERAL LOCATION.

FILE NAME = #FILE#	USER NAME = #USER#	DESIGNED - PJM	REVISED -	STATE OF ILLINOIS DEPARTMENT OF TRANSPORTATION	CONTROL SURVEY TIES		F.A. RTE.	SECTION	COUNTY	TOTAL SHEETS	SHEET NO.
		DRAWN - DVH	REVISED -		SCALE:	SHEET NO. 7 OF 24 SHEETS	STA.	NORTH SLOPE ROAD	CARROLL	24	7
		CHECKED - RGD	REVISED -							CONTRACT NO. 46030	
		DATE - 12-21-09	REVISED -					FED. ROAD DIST. NO.	ILLINOIS	FED. AID PROJECT	