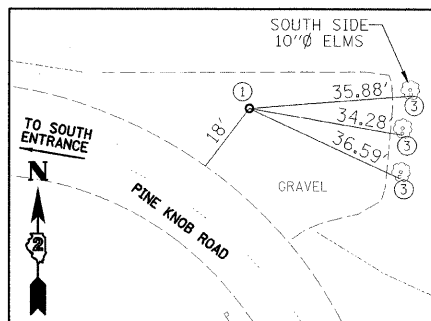
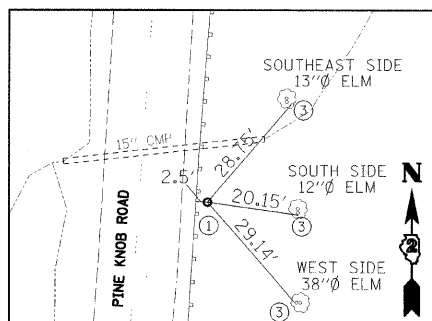


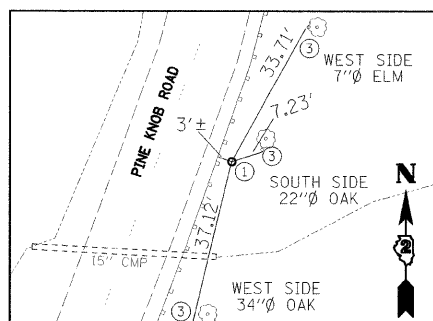
CONTROL PT #3819
(IRON PIPE WITH CAP)
N 1988688.519 / E 2301099.679



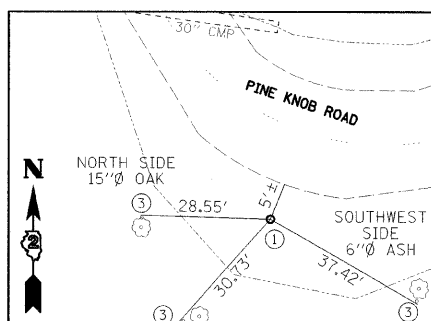
CONTROL PT #3820
(IRON PIPE WITH CAP)
N 1988979.893 / E 2300938.520



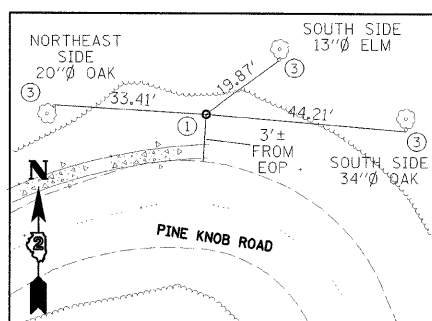
CONTROL PT #4005
(IRON PIPE WITH CAP)
N 1988332.863 / E 2301096.393



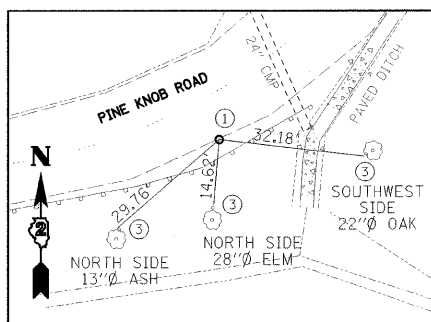
CONTROL PT #4153
(IRON PIPE WITH CAP)
N 1988124.741 / E 2301065.651



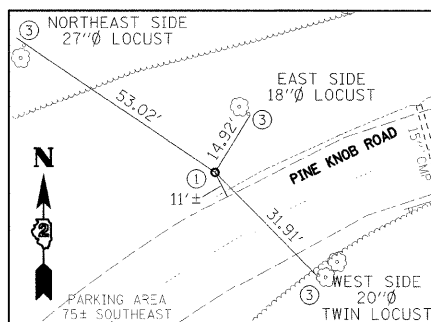
CONTROL PT #4257
(IRON PIPE WITH CAP)
N 1987791.500 / E 2300662.080



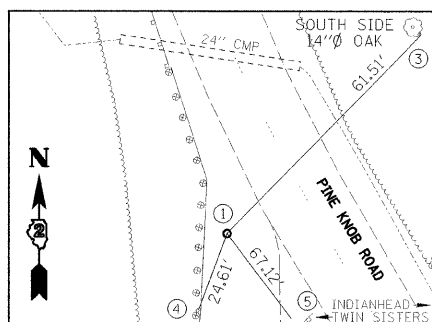
CONTROL PT #4394
(IRON PIPE WITH CAP)



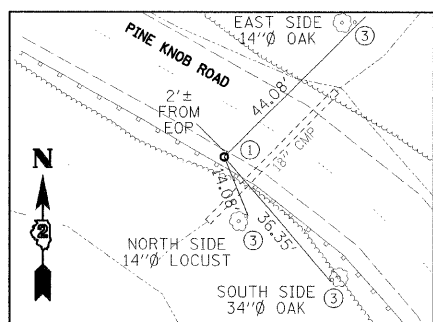
CONTROL PT #4395
(IRON PIPE WITH CAP)
N 1987635.979 / E 2300190.244



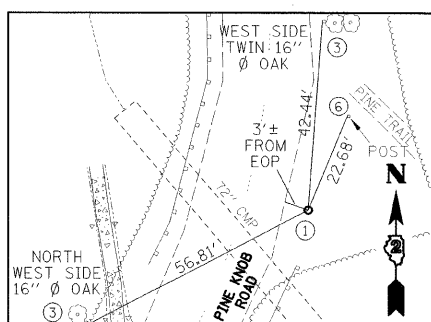
CONTROL PT #4465
(IRON PIPE WITH CAP)
N 1987572.896 / E 2299780.949



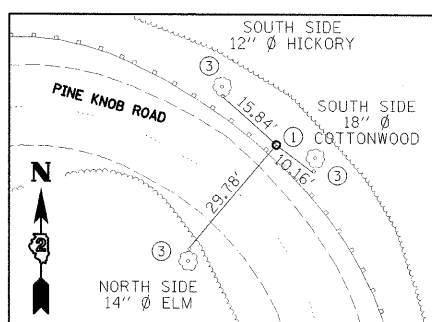
CONTROL PT #4757
(IRON PIPE WITH CAP)
N 1986791.075 / E 2299477.767



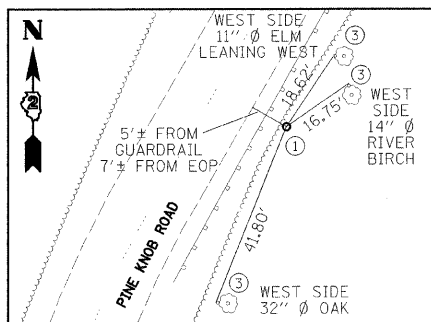
CONTROL PT #4883
(IRON PIPE WITH CAP)
N 1985695.453 / E 2300309.618



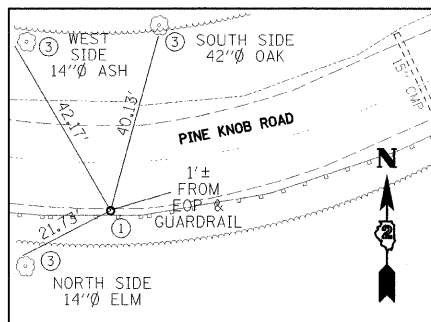
CONTROL PT #5045
(IRON PIPE WITH CAP)
N 1985433.623 / E 2300430.432



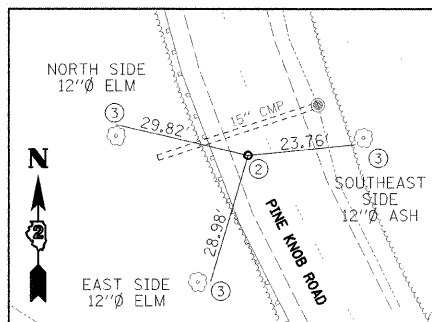
CONTROL PT #5312
(IRON PIPE WITH CAP)
N 1985145.400 / E 2300487.323



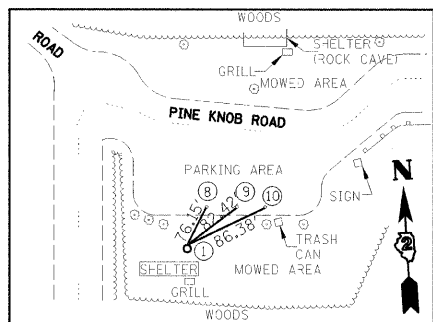
CONTROL PT #5313
(IRON PIPE WITH CAP)
N 1984986.243 / E 2300473.988



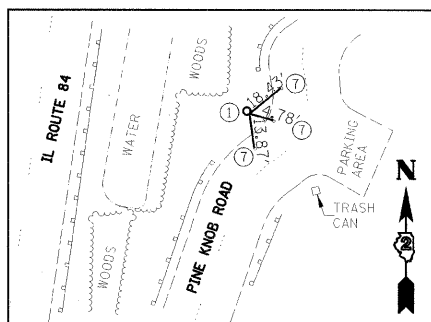
CONTROL PT #6005
(IRON PIPE WITH CAP)
N 1988915.750 / E 2300702.224



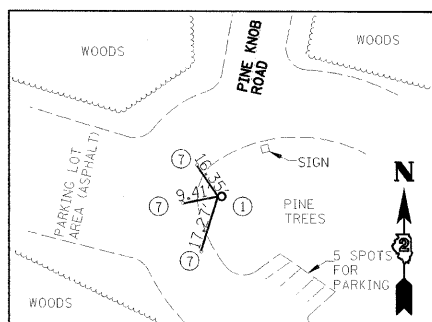
CONTROL PT #6402
(MAG NAIL)
N 1985974.056 / E 2300047.998



CONTROL PT #GPS 10004
(IRON PIPE WITH CAP)
N 1987407.138 / E 2299564.040



CONTROL PT #GPS 10005
(IRON PIPE WITH CAP)
N 1987253.275 / E 2299455.212



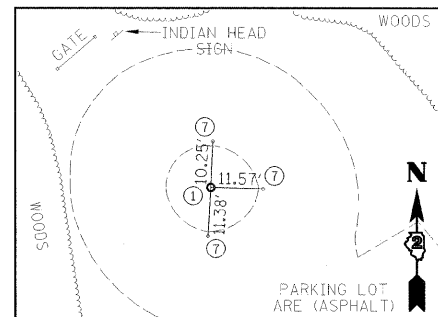
CONTROL PT #GPS 10006
(IRON PIPE WITH CAP)
N 1984429.390 / E 2300079.059

LEGEND

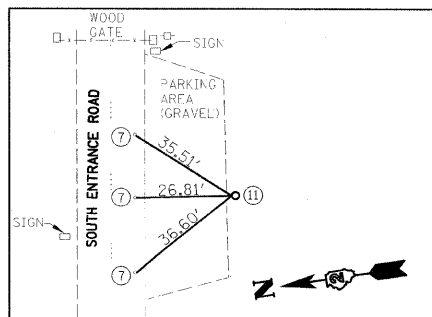
- ① IRON PIPE WITH CAP, FLUSH
- ② MAG NAIL 5' ± FROM EDGE OF PAVEMENT (EOP)
- ③ MAG NAIL ± 3' HIGH IN VARIOUS DIAMETER TREE
- ④ MAG NAIL ON EAST SIDE 13TH POST FROM THE NORTH
- ⑤ MAG NAIL IN NORTH SIDE OF INDIAN HEAD / TWIN SISTERS SIGN POST
- ⑥ MAG NAIL IN WEST FACE 6"x6" WOOD POST (PINE TRAIL)
- ⑦ MAG NAIL 1' ± FROM EDGE OF PAVEMENT (EOP)
- ⑧ MAG NAIL 1' ± FROM EDGE OF PAVEMENT (EOP) BETWEEN 8TH & 9TH PARKING BLOCK FROM WEST
- ⑨ MAG NAIL 1' ± FROM EDGE OF PAVEMENT (EOP) BETWEEN 9TH & 10TH PARKING BLOCK FROM WEST
- ⑩ MAG NAIL 1' ± FROM EDGE OF PAVEMENT (EOP) BETWEEN 10TH & 11TH PARKING BLOCK FROM WEST
- ⑪ IRON PIPE W/ CAP 5' ± FROM EDGE OF PAVEMENT (EOP), 1" ± DEEP

LAYOUT COORDINATE SCHEDULE

POINT #	STATION/ OFFSET	NORTHING	EASTING	DESCRIPTION
3819	374+51.62/ 13.66' RT	1988688.519	2301099.679	IRON PIPE W/ CAP
3920	377+72.57/ 25.25' RT	1988979.893	2300938.520	IRON PIPE W/ CAP
4005	370+99.14/ 15.07' RT	1988332.863	2301096.393	IRON PIPE W/ CAP
4153	368+92.09/ 15.55' RT	1988124.741	2301065.651	IRON PIPE W/ CAP
4257	363+11.48/ 20.84' RT	1987791.500	2300662.080	IRON PIPE W/ CAP
4394	360+96.02/ 19.80' LT	1988004.304	2300562.014	IRON PIPE W/ CAP
4395	355+77.23/ 9.72' RT	1987635.979	2300190.244	IRON PIPE W/ CAP
4465	351+67.38/ 15.11' LT	1987572.896	2299780.949	IRON PIPE W/ CAP
4757	340+28.78/ 19.13' LT	1986791.075	2299477.767	IRON PIPE W/ CAP
4883	326+25.32/ 10.64' LT	1985695.453	2300309.618	IRON PIPE W/ CAP
5045	323+25.29/ 14.09' RT	1985433.623	2300430.432	IRON PIPE W/ CAP
5312	317+12.41/ 13.71' RT	1985145.400	2300487.323	IRON PIPE W/ CAP
5313	315+57.16/ 17.60' RT	1984986.243	2300473.988	IRON PIPE W/ CAP
6005	380+07.54/ 10.52' LT	1988915.750	2300702.224	IRON PIPE W/ CAP
6402	330+09.98/ 5.14' LT	1985974.056	2300047.998	MAG NAIL
10004	346+42.72/ 74.97' RT	1987407.138	2299564.040	IRON PIPE W/ CAP
10005	344+63.61/ 13.53' LT	1987253.275	2299455.212	IRON PIPE W/ CAP
10006	308+05.91/ 13.28' RT	1984429.390	2300079.059	IRON PIPE W/ CAP
10007	308+21.06/ 141.14' LT	1984549.049	2299980.262	IRON PIPE W/ CAP
10012	18+93.14/ 39.53' RT	1989040.345	2299921.883	IRON PIPE W/ CAP



CONTROL PT #GPS 10007
(IRON PIPE WITH CAP)
N 1984549.049 / E 2299980.262



CONTROL PT #GPS 10012
(IRON PIPE WITH CAP)
N 1989040.345 / E 2299921.883

DESIGNED - LAW	REVISED -
DRAWN - DRR	REVISED -
CHECKED - PJM	REVISED -
DATE - 01/27/10	REVISED -

STATE OF ILLINOIS
DEPARTMENT OF TRANSPORTATION
DIVISION OF HIGHWAYS

CONTROL TIES

SCALE: SHEET NO. 7 OF 35 SHEETS STA. TO STA.

IDOT/IDNR STATEWIDE
MISSISSIPPI PALISADES STATE PARK
PINE KNOB ROAD

F.A.	SECTION	COUNTY	TOTAL SHEETS	SHEET NO.
	PINE KNOB ROAD	CARROLL	35	7
CONTRACT NO. 46093				
FED. ROAD DIST. NO. ILLINOIS FED. AID PROJECT				