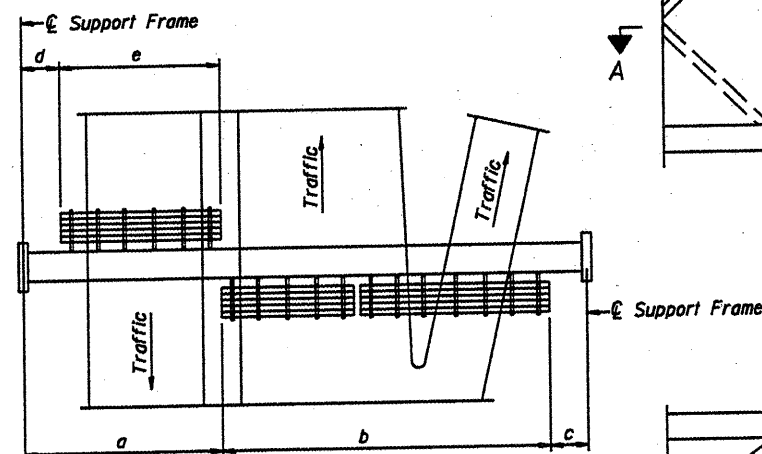
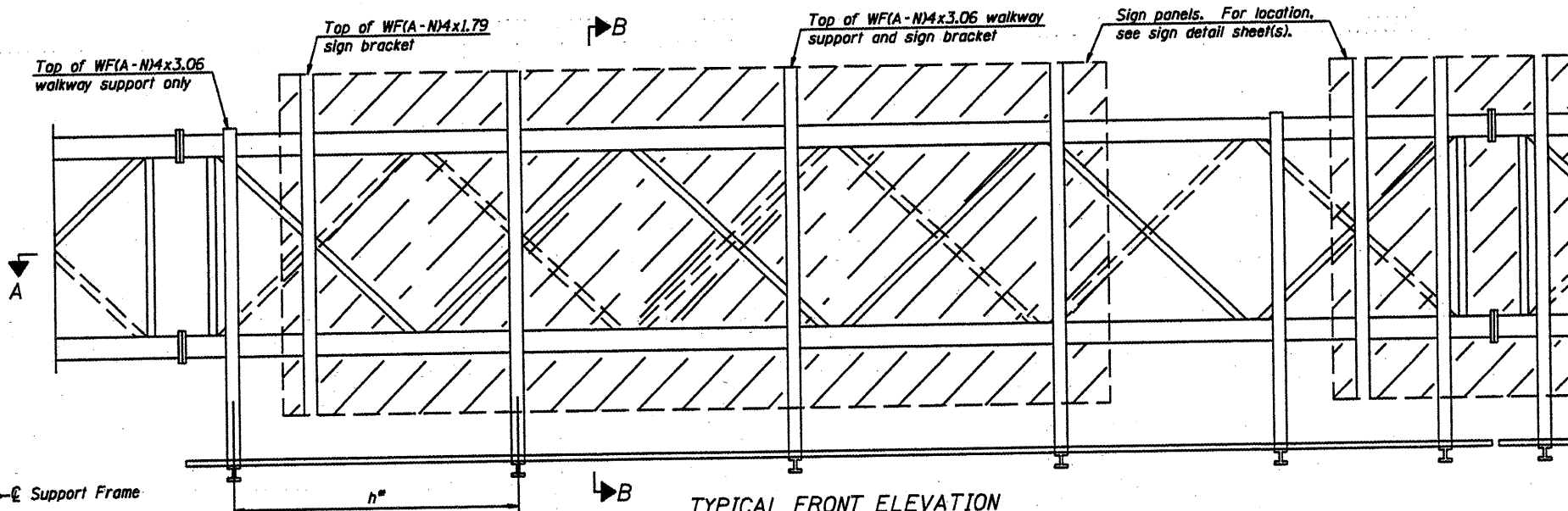


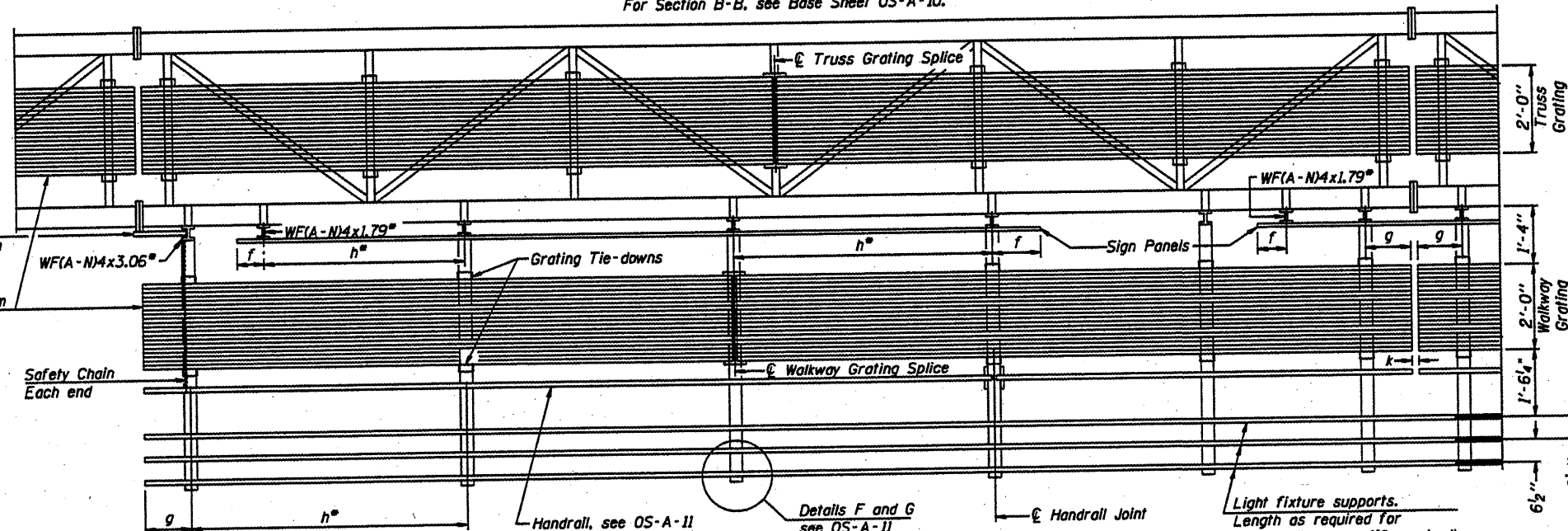
| NUMBER | REVISION | DATE |
|--------|----------|------|
|        |          |      |
|        |          |      |
|        |          |      |
|        |          |      |
|        |          |      |



PLAN  
WALKWAY AND HANDRAIL SKETCH  
(Road plan beneath truss varies)



TYPICAL FRONT ELEVATION  
With lights and handrail omitted for clarity.  
For Section B-B, see Base Sheet OS-A-10.



SECTION A-A

Handrail and walkway shall span a minimum of three brackets between splices and/or gap joints. Place all sign and walkway brackets as close to panel points as practical. Handrail joints, grating, and light support splices placed as needed.

Truss grating to facilitate inspection shall run full length (center to center of support frames) ±12" on overhead trusses. Cost of truss grating is included in "Overhead Sign Structure".

Walkway and Truss Grating width dimensions are nominal and may vary ±½" based on available standard widths.

BRACKET TABLE

| Sign Width   |                       | Number Brackets Required |
|--------------|-----------------------|--------------------------|
| Greater Than | Less Than or Equal To |                          |
| 8'-0"        | 8'-0"                 | 2                        |
| 8'-0"        | 14'-0"                | 3                        |
| 14'-0"       | 20'-0"                | 4                        |
| 20'-0"       | 26'-0"                | 5                        |
| 26'-0"       | 32'-0"                | 6                        |

Notes:  
• Space walkway brackets WFA-N4x3.06 and sign brackets WFA-N4x1.79 for efficiency and within limits shown:

- f = 12" maximum, 4" minimum (End of sign to  $\phi$  of nearest bracket)
- g = 12" maximum, 4" minimum (End of walkway grating to  $\phi$  of nearest support bracket)
- h = 6'-0" maximum ( $\phi$  to  $\phi$  sign and/or walkway support brackets, WFA-N4x1.79 or WFA-N4x3.06)
- k = 2" maximum gap between adjacent walkway grating sections and handrail ends

• If walkway bracket at safety chain location is behind sign, add angle to bracket, see Alternate Safety Chain Attachment on Base Sheet OS-A-11.

For Details T and W, Section B-B and Grating Splice Details see Base Sheet OS-A-10.  
For Handrail Details see Base Sheet OS-A-11.

|          |                                    |
|----------|------------------------------------|
| DESIGNED | 20                                 |
| CHECKED  | DESIGNED BY BRIDGE DESIGN          |
| DRAWN    | PASSED                             |
| CHECKED  | DESIGNED BY BRIDGES AND STRUCTURES |

| Structure Number | Station  | a   | b   | c   | d   | e   | Walkway Grating and Handrail Lengths |
|------------------|----------|-----|-----|-----|-----|-----|--------------------------------------|
| 4S0901074R099.6  | 461 + 00 | N/A | N/A | N/A | N/A | N/A | 80' - 0" *                           |
| 4S0901150L001.5  | 210 + 50 | N/A | N/A | N/A | N/A | N/A | 70' - 0"                             |
| 4S0901024L001.3  | 293 + 00 | N/A | N/A | N/A | N/A | N/A | 72' - 6"                             |
| 4S090116L006.3   | 242 + 00 | N/A | N/A | N/A | N/A | N/A | 77' - 0"                             |
| 4S0721474R004.9  | 191 + 20 | N/A | N/A | N/A | N/A | N/A | 51' - 8"                             |

\* Length shown is for internal truss grating to be installed.

OVERHEAD SIGN STRUCTURES  
ALUMINUM WALKWAY DETAILS

District 4  
Sign Structure Replacement