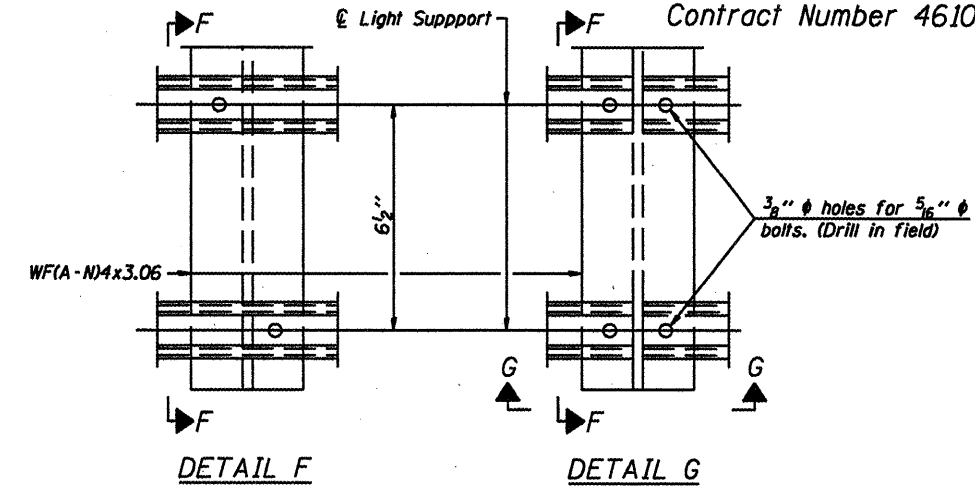


① Install standard force-fit end caps or weld 1/8" end plates with 1/8" c.f.w. and grind smooth. (All rail ends)

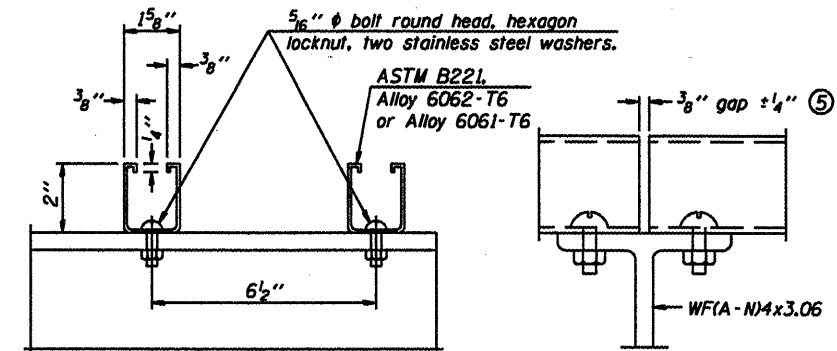
Fittings-ASTM B26, Alloy 356-T7 or 1 1/2" aluminum pipe

② Horizontal handrail member shall be continuous thru fitting. Provide 1/16" hole in fitting for 3/8" bolt. Field drill 1/16" hole in horizontal rail member. Provide locknut and two stainless steel washers for bolt. (Use 5/16" eyebolts in 1/16" holes on top rail at ends only.)



DETAIL F

DETAIL G

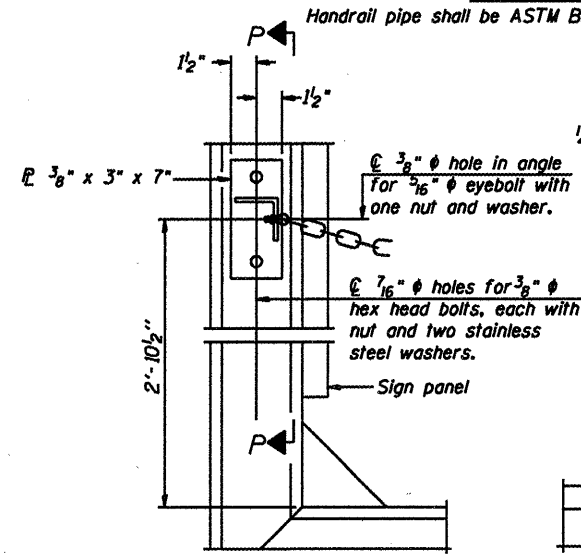


SECTION F-F

SECTION G-G

LIGHTING FIXTURE MOUNTS (IF REQUIRED)

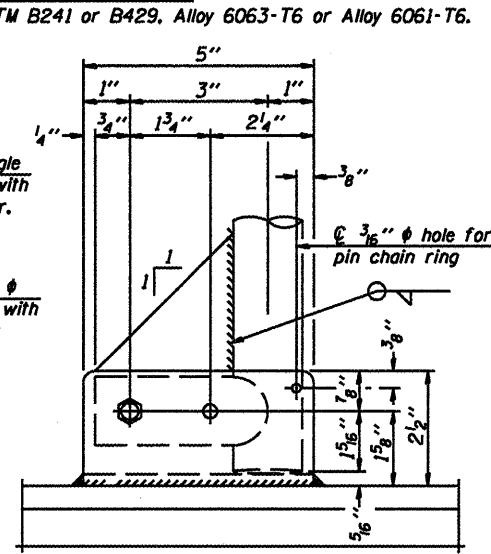
⑤ Field cut ends of light support channels shall be free of burrs or hazardous projections and coated with zinc-rich primer or equivalent.



ALTERNATE SAFETY CHAIN ATTACHMENT

(With Sign Present)

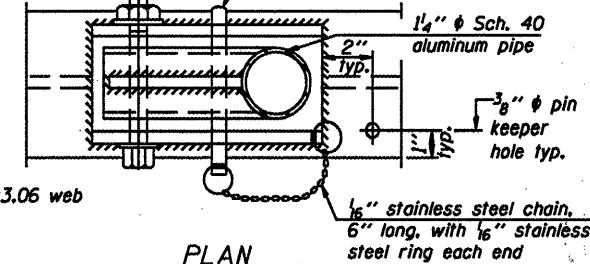
Items not shown same as "Side Elevation" of "Handrail Details"



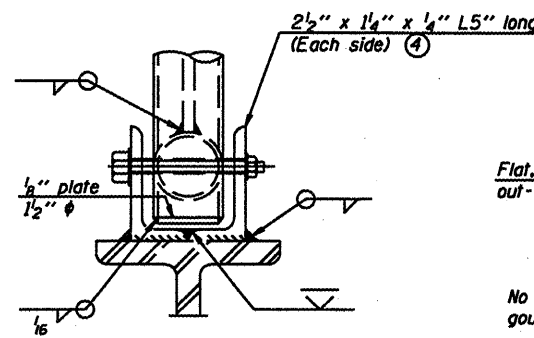
SIDE ELEVATION

Drill and ream for 3/8" bolt with hexagon locknut and two stainless steel washers.

Drill 5/16" hole for 1/4" ring-grip quick release self-locking stainless steel pin

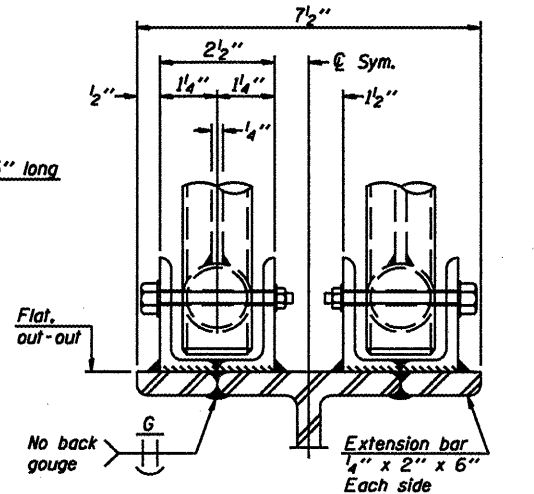


PLAN
DETAIL E HANDRAIL HINGE

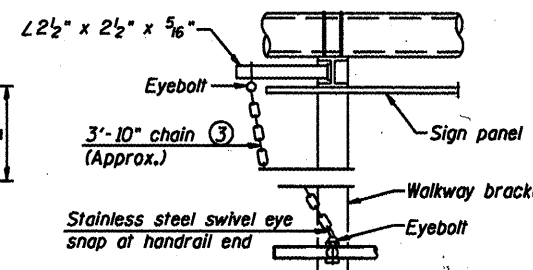


FRONT ELEVATION

See "Elevation" at right for dimensions.



ELEVATION AT HANDRAIL JOINT ④



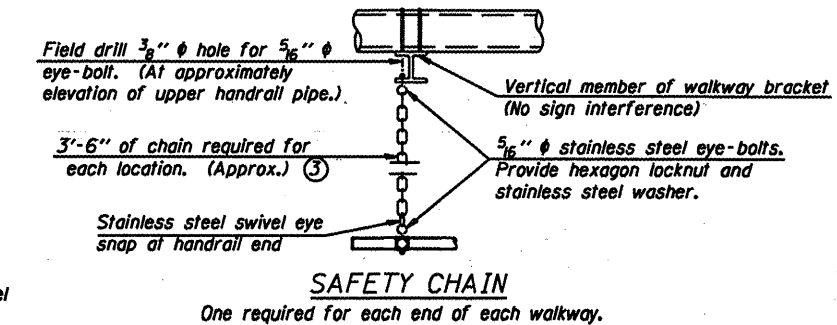
ALTERNATE SAFETY CHAIN ATTACHMENT

Details not shown similar to "Safety Chain" Details (Walkway omitted for clarity)

③ 3/16" Type 304L stainless steel chain, approximately 12 links per foot.

④ Extrusions may be used in lieu of the details shown, with approval of the Engineer.

PLAN AT HANDRAIL JOINT
Details not shown same as "PLAN"



SAFETY CHAIN

One required for each end of each walkway.

OVERHEAD SIGN STRUCTURES
ALUMINUM HANDRAIL DETAILS

District 6
Sign Structure Replacement

DESIGNED	20
CHECKED	EXAMINED
DRAWN	PASSED
CHECKED	ENGINEER OF BRIDGES AND STRUCTURES

NUMBER	REVISION	DATE