

DETAIL T
(Continuous Truss grating)

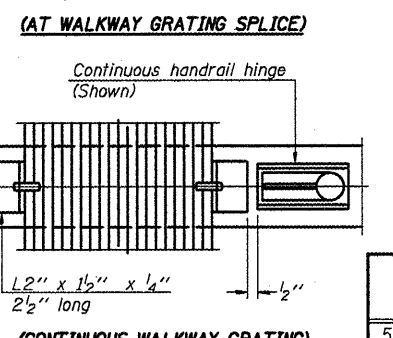
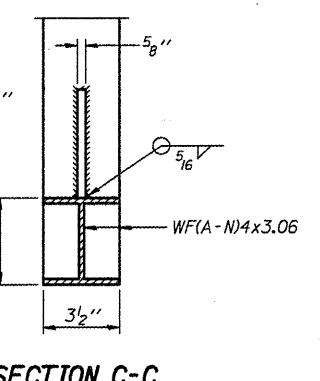
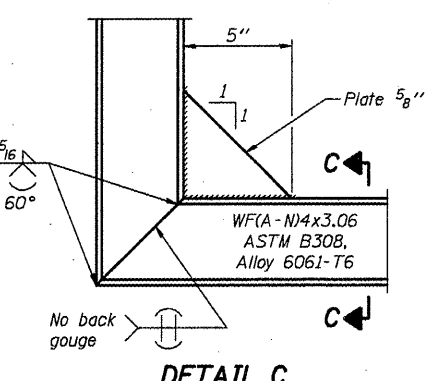
SPECIFICATIONS FOR STANDARD ALUMINUM GRATING

Main Bearing Bars shall be 3/16'' x 1/2'' on 1 3/16'' centers and conform to ASTM B221 Alloy 6061-T6.
Cross bars shall be 3/16'' x 1/2'' on 4'' centers and conform to ASTM B221 Alloy 6063-T5 or 6061-T6.

OR

Aluminum Grating with modified '''' sections for main bearing bars shall meet the following requirements:
Main bars shall conform to ASTM B221 Alloy 6061-T6 and have a minimum section modulus equal to 0.0705 in.³ per bar, a depth of 1/2'', spaced on 1 3/16'' centers.
Cross bars shall conform to ASTM B221 Alloy 6063-T5 or T-42 and spaced on 4'' centers.

- ① Drilling holes in grating may be done in shop or field, based on Contractor's preference and subject to accurate alignment.
- ② Stainless steel shims shall be placed as shown in Detail T if needed to compensate for alignment variations between horizontal and diagonal pipes beyond adjustment provided by angles. Thicker shims may be used subject to shims performing properly.
- ③ If Handrail Joint present, weld angle to WF(A-N)4 and 1/4'' extension bars. (See Base Sheet OS-A-11).
- ④ 1/8'' x 1/2'' x 2'' welded to handrail posts to protect locations that contact grating.
- ⑤ Tube to grating gap may vary from 0 to 1/2'', max. to align walkway, allow for camber, etc.
- ⑥ Based on actual height of tallest sign given on OS-A-1.



NUMBER	REVISION	DATE

Structure Number	Station	A	⑥ B	C	⑥ D
5 S 057 S009 R019.00	148+15	5 5/16"	3'-1 1/2"	5'-3"	8'-10 1/2"
5 S 057 S009 R019.10	156+50	7 7/16"	*	7'-0"	& VAR.
5 S 057 S009 R019.40	170+70	6 5/16"	*	5'-3"	*

*Varies for EB & WB walkways - Use "Sign Truss Mounting Detail"- Sheets 26, 27, & 28, for the information needed to determine walkway support & sign support lengths.

OS-A-10