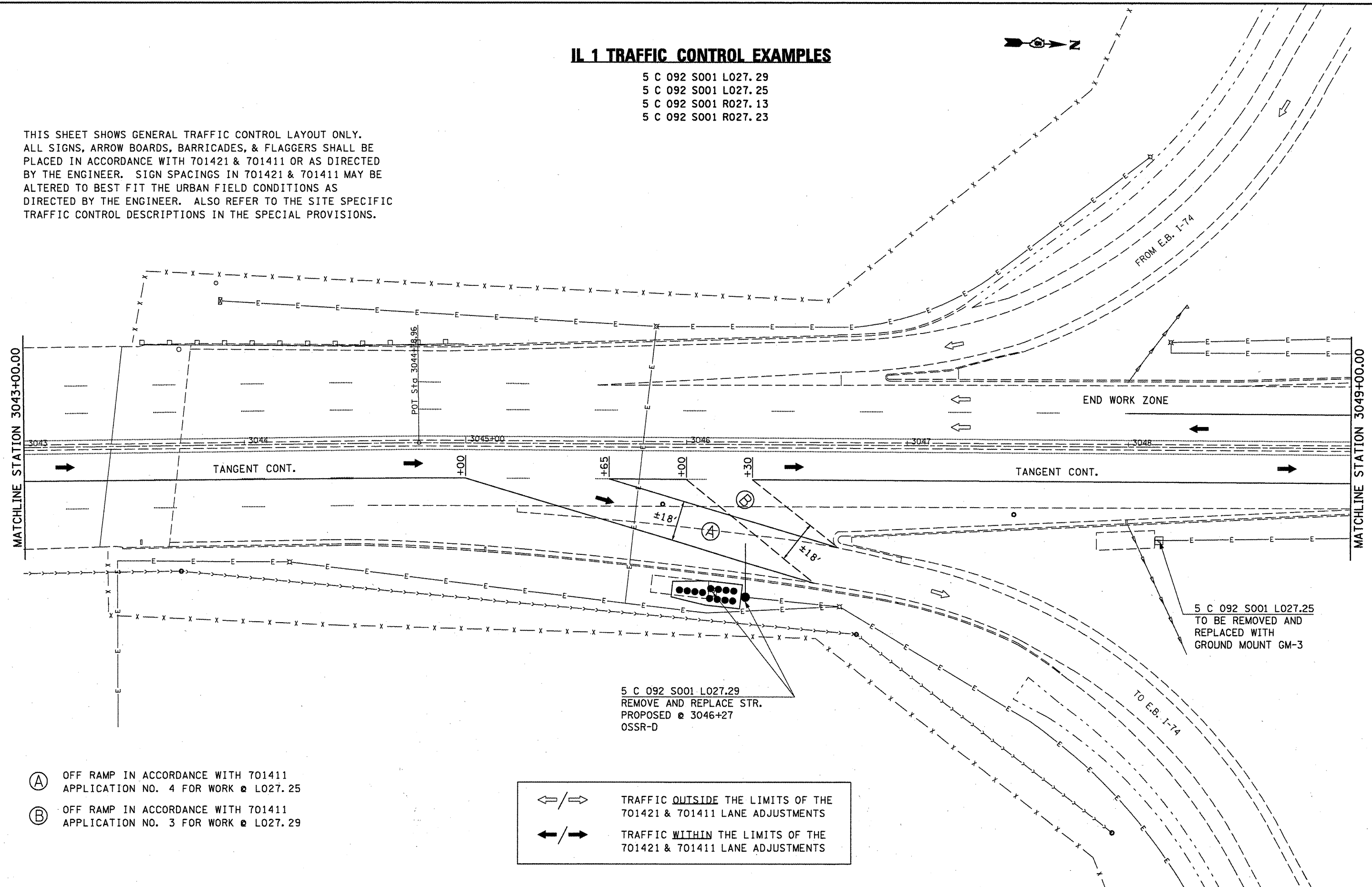


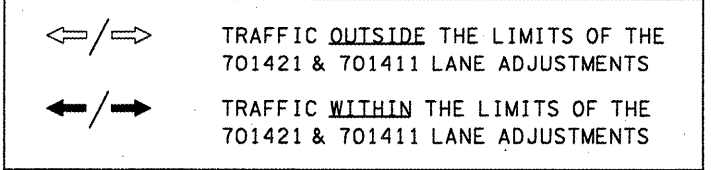
IL 1 TRAFFIC CONTROL EXAMPLES

5 C 092 S001 L027.29
 5 C 092 S001 L027.25
 5 C 092 S001 R027.13
 5 C 092 S001 R027.23

THIS SHEET SHOWS GENERAL TRAFFIC CONTROL LAYOUT ONLY. ALL SIGNS, ARROW BOARDS, BARRICADES, & FLAGGERS SHALL BE PLACED IN ACCORDANCE WITH 701421 & 701411 OR AS DIRECTED BY THE ENGINEER. SIGN SPACINGS IN 701421 & 701411 MAY BE ALTERED TO BEST FIT THE URBAN FIELD CONDITIONS AS DIRECTED BY THE ENGINEER. ALSO REFER TO THE SITE SPECIFIC TRAFFIC CONTROL DESCRIPTIONS IN THE SPECIAL PROVISIONS.



- (A) OFF RAMP IN ACCORDANCE WITH 701411 APPLICATION NO. 4 FOR WORK @ L027.25
- (B) OFF RAMP IN ACCORDANCE WITH 701411 APPLICATION NO. 3 FOR WORK @ L027.29



5 C 092 S001 L027.29
 REMOVE AND REPLACE STR.
 PROPOSED @ 3046+27
 OSSR-D

5 C 092 S001 L027.25
 TO BE REMOVED AND
 REPLACED WITH
 GROUND MOUNT GM-3

FILE NAME =	USER NAME = ceerlookjd	DESIGNED -	REVISED -	STATE OF ILLINOIS DEPARTMENT OF TRANSPORTATION	IL 1 TRAFFIC CONTROL EXAMPLES	F.A. RTE.	SECTION	COUNTY	TOTAL SHEETS	SHEET NO.
ce:\pw\work\PW100T\CEARLOCKJD\B180151\	46118-sh1-IL 1-Traffic Control-plan.dgn	DRAWN -	REVISED -			D-5 OSS REPL 2010-46	Various	77	50	
PLOT SCALE = 48.0000' / IN.	CHECKED -	REVISED -	REVISED -			Various	CONTRACT NO. 46110			
PLOT DATE = 1/21/2010	DATE -	REVISED -	REVISED -			ILLINOIS FED. AID PROJECT				
SCALE: SHEET NO. OF SHEETS STA. TO STA.										