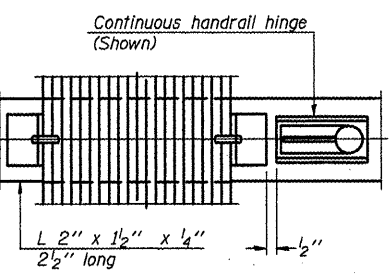


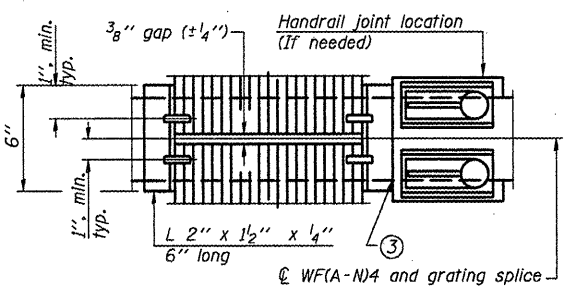
SECTION B-B

Sign shall be even with the top of the bracket, but it may extend no more than 6" above the top of the bracket for field adjustments.



(CONTINUOUS WALKWAY GRATING)

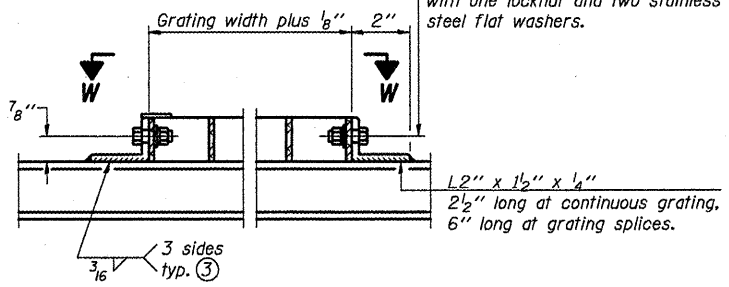
SECTION W-W



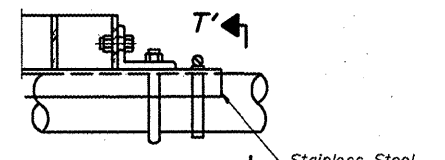
(AT WALKWAY GRATING SPLICE)

SECTION W-W

Drill 1 3/8" diameter holes in walkway for 3/8" diameter bolts, 1" long, each with one locknut and two stainless steel flat washers.



DETAIL W
(Walkway grating)



DETAIL T'
(Truss grating splice)
Details not shown same as Detail T. Alternate materials may be used subject to the Engineer's review and approval.

SPECIFICATIONS FOR STANDARD ALUMINUM GRATING

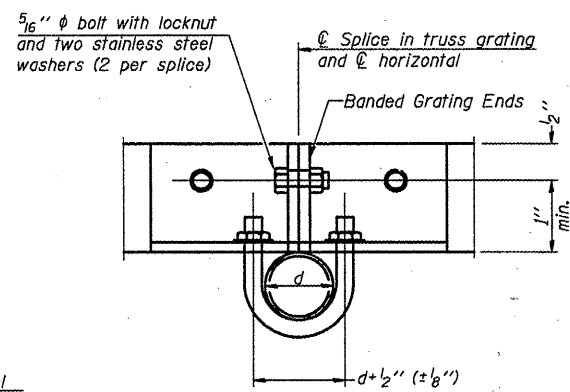
Main Bearing Bars (MBB) shall be 3/16" x 1/2" on 1 3/16" centers and conform to ASTM B211 Alloy 6061-T6. Cross bars (CB) shall be 3/16" x 1/2" on 4" centers and conform to ASTM B221 Alloy 6063-T5 or 6061-T6.

OR

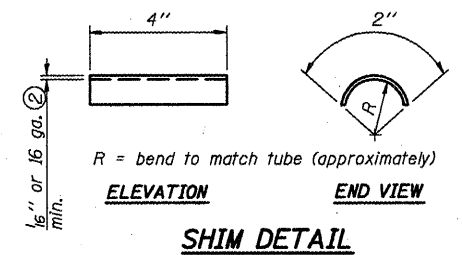
Aluminum Grating with modified "T" sections for main bearing bars shall meet the following requirements:

Main bars shall conform to ASTM B221 Alloy 6061-T6 and have a minimum section modulus equal to 0.0705 in.³ per bar, a depth of 1/2", spaced on 1 3/16" centers.

Cross bars shall conform to ASTM B221 Alloy 6063-T5 or T-42 and spaced on 4" centers.

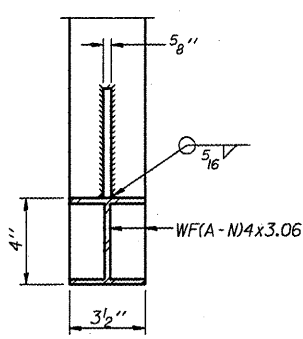


SECTION T'-T'



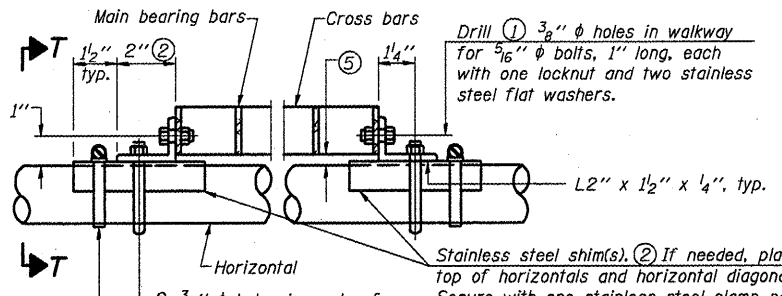
SHIM DETAIL

- ① Drilling holes in grating may be done in shop or field, based on Contractor's preference and subject to accurate alignment.
- ② Stainless steel shims shall be placed as shown in Detail T if needed to compensate for alignment variations between horizontal and diagonal pipes beyond adjustment provided by angles. Thicker shims may be used subject to shims performing properly.
- ③ If Handrail Joint present, weld angle to WF(A-N)4 and 1/4" extension bars. (See Base Sheet OSC-A-8.)
- ④ 1/8" x 1/2" x 2" welded to handrail posts to protect locations that contact grating.
- ⑤ Tube to grating gap may vary from 0 to 1/2", max. to align walkway, allow for camber, etc.
- ⑥ Based on actual sign height, D_s, given on OSC-A-1.



SECTION D-D

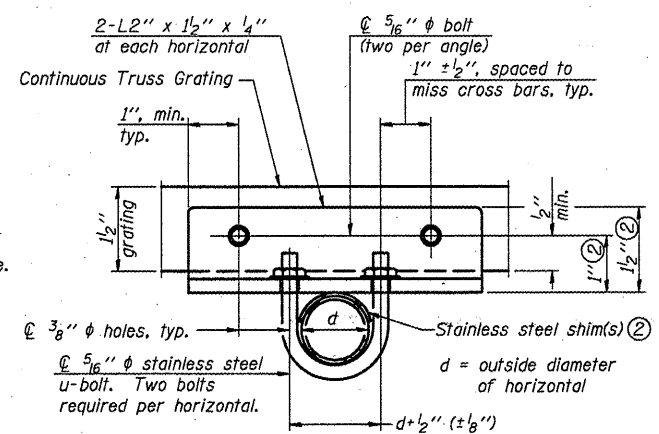
Screw type stainless steel tube clamp at shim location



DETAIL T
(Continuous Truss grating)

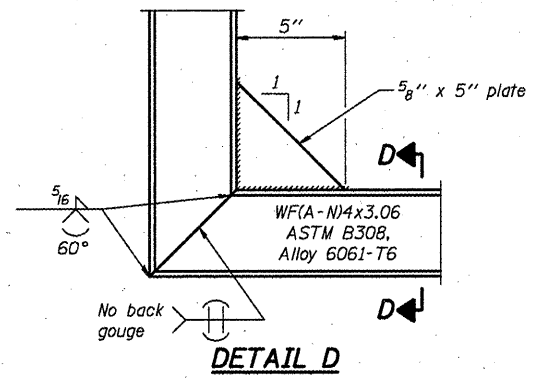
Drill 1 3/8" diameter holes in walkway for 3/8" diameter bolts, 1" long, each with one locknut and two stainless steel flat washers.

Stainless steel shim(s). If needed, place on top of horizontals and horizontal diagonals. Secure with one stainless steel clamp per side. See "Shim Detail".



SECTION T-T

NUMBER	REVISION	DATE



DETAIL D

Structure Number	Station	A	⑥ B	C	⑥ D
5 C 092 S001 L027.29	3046+27	6 5/16"	1'-6"	5'-6"	7'-6"
5 C 092 S001 R027.13	3052+73	6 5/16"	1'-6"	5'-6"	7'-6"
5 C 092 S001 L027.09	3056+65	6 5/16"	1'-6"	5'-6"	7'-6"

OSC-A-7

6-1-09

FILE NAME	USER NAME	DESIGNED	REVISED
c:\pwwork\pwwork\cora\grd\110151\0546110-ahh-detailed.dgn	cora	-	-
		DRAWN	REVISED
		CHECKED	REVISED
		DATE	REVISED

STATE OF ILLINOIS DEPARTMENT OF TRANSPORTATION		CANTILEVER SIGN STRUCTURES WALKWAY DETAILS ALUMINUM TRUSS & STEEL POST	
SCALE:	SHEET NO.	OF SHEETS	STA. TO STA.

F.A. RTE.	SECTION	COUNTY	TOTAL SHEETS	SHEET NO.
	D-5 OSS REPL 2010-46	Various	77	61
	Various			CONTRACT NO. 46110