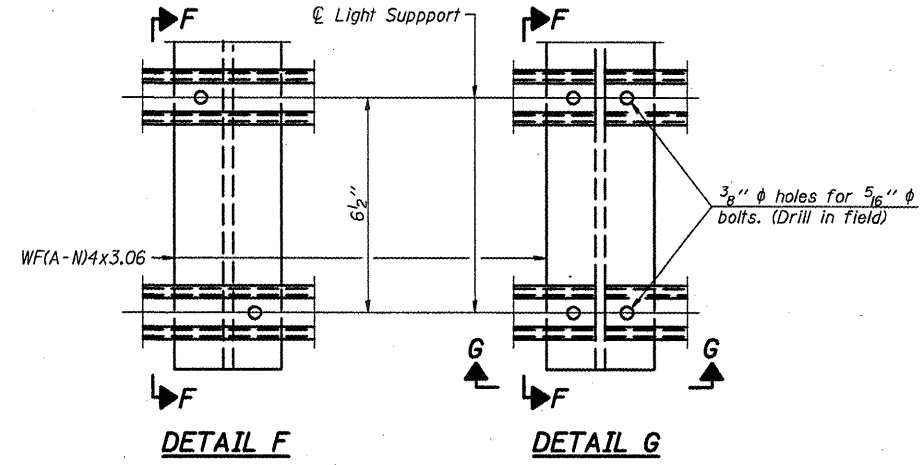
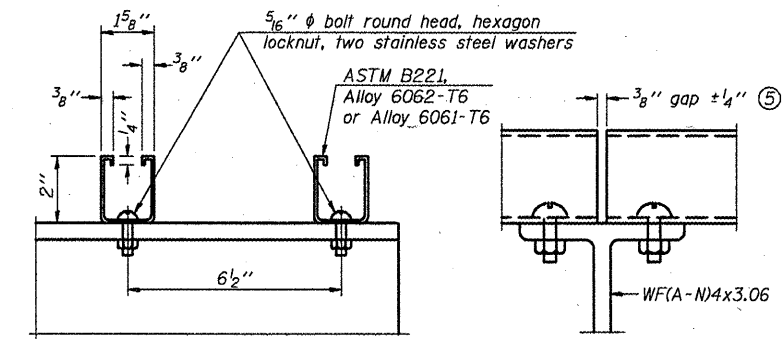
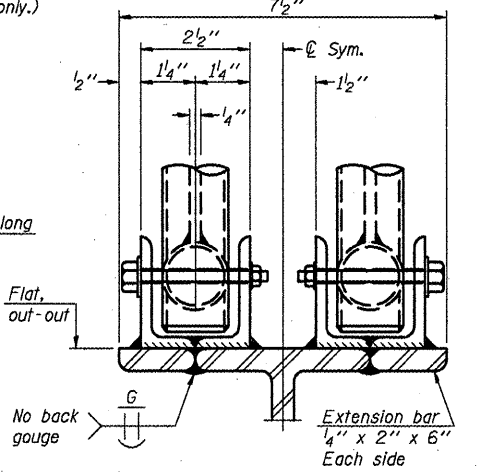
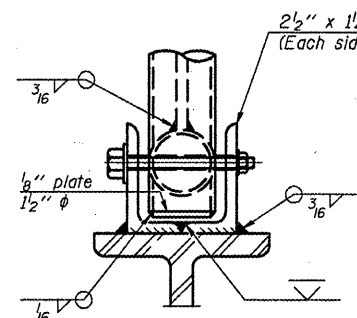
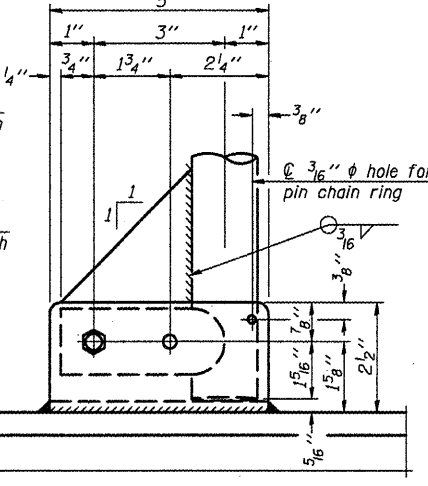
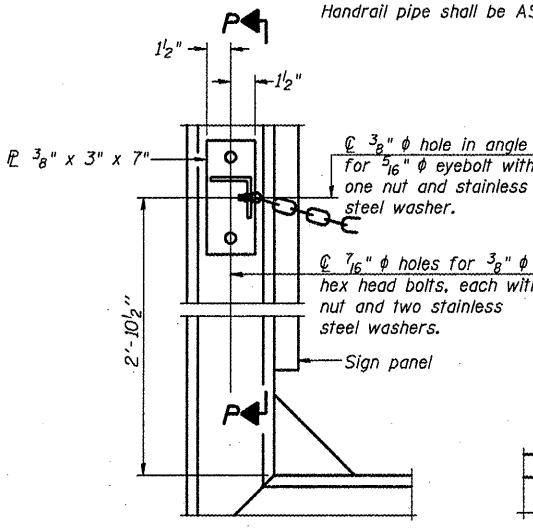


① Install standard force-fit end caps or weld 1/8" end plates with 1/8" c.f.w. and grind smooth. (All rail ends)

② Horizontal handrail member shall be continuous thru fitting. Provide 7/16" φ hole in fitting for 3/8" φ bolt. Field drill 7/16" φ hole in horizontal rail member. Provide locknut and two stainless steel washers for bolt. (Use 5/16" eyebolts in 7/16" φ holes on top rail at ends only.)

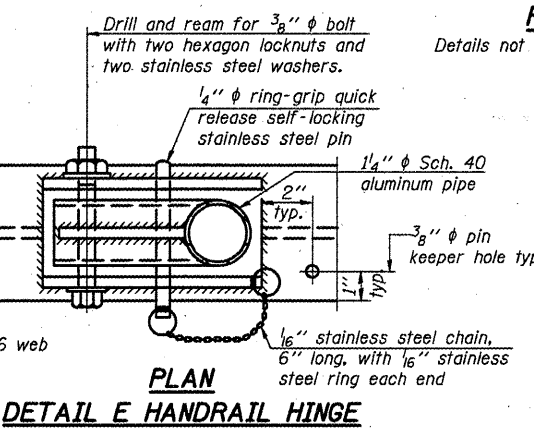
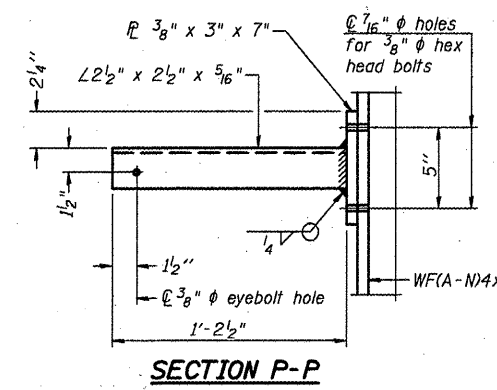


**HANDRAIL DETAILS**  
Handrail pipe shall be ASTM B241 or B429, Alloy 6063-T6 or Alloy 6061-T6.

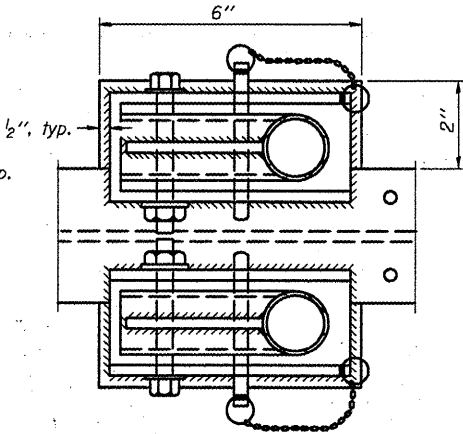


⑤ Field cut ends of light support channels shall be free of burrs or hazardous projections and coated with zinc-rich primer or equivalent.

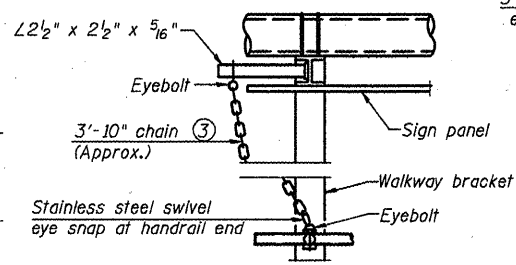
**ALTERNATE SAFETY CHAIN ATTACHMENT (With Sign Present)**  
Items not shown same as "Side Elevation" of "Handrail Details"



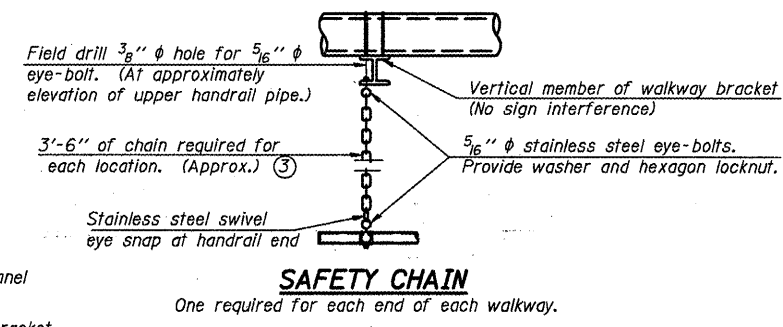
**FRONT ELEVATION**  
Details not shown same as "ELEVATION" at right.



**ELEVATION AT HANDRAIL JOINT**  
Details not shown same as "FRONT ELEVATION"



③ 3/16" Type 304L stainless steel chain, approximately 12 links per foot.  
④ Extrusions may be used in lieu of the details shown, with approval of the Engineer.



One required for each end of each walkway.

NUMBER	REVISION	DATE

OSC-A-8 12-1-08