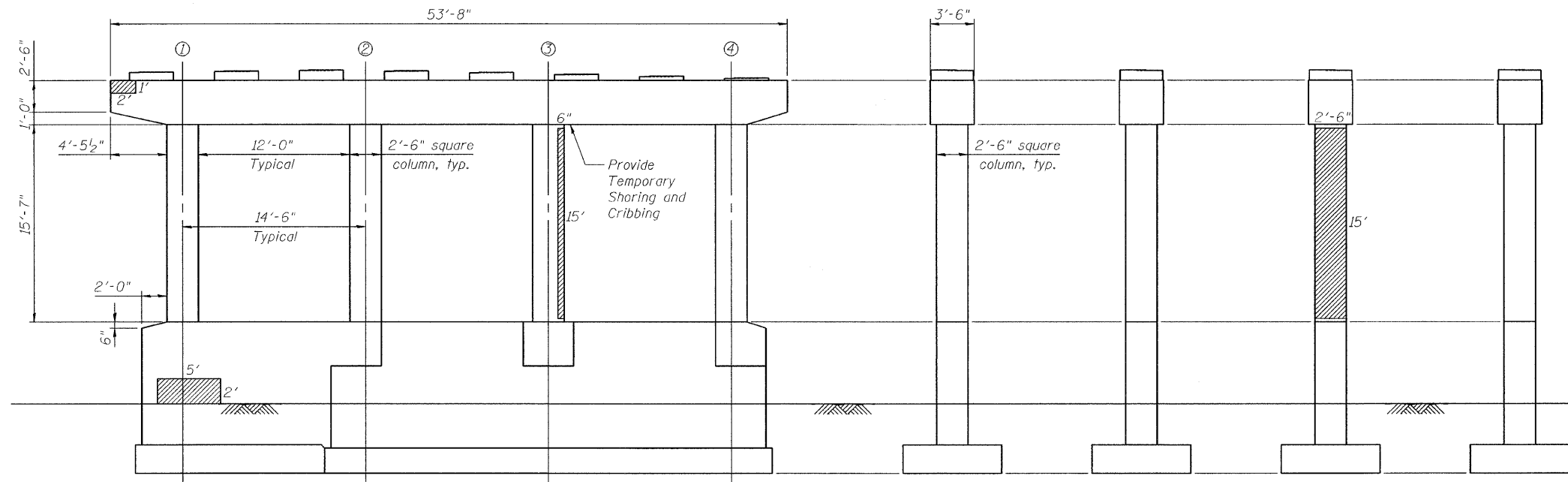


F&P ROUTE NO.	SECTION	COUNTY	TOTAL SHEETS	SHEET NO.
350	50-1 VB-1-BR	Cook	33	22
F&P ROAD DIST.		ILLINOIS FED. AID PROJECT		

SHEET NO. 11 OF 16 SHEETS

Contract # 60H76



SB PIER 3 ELEVATION
(Looking South)

COLUMN 1
(Looking East)

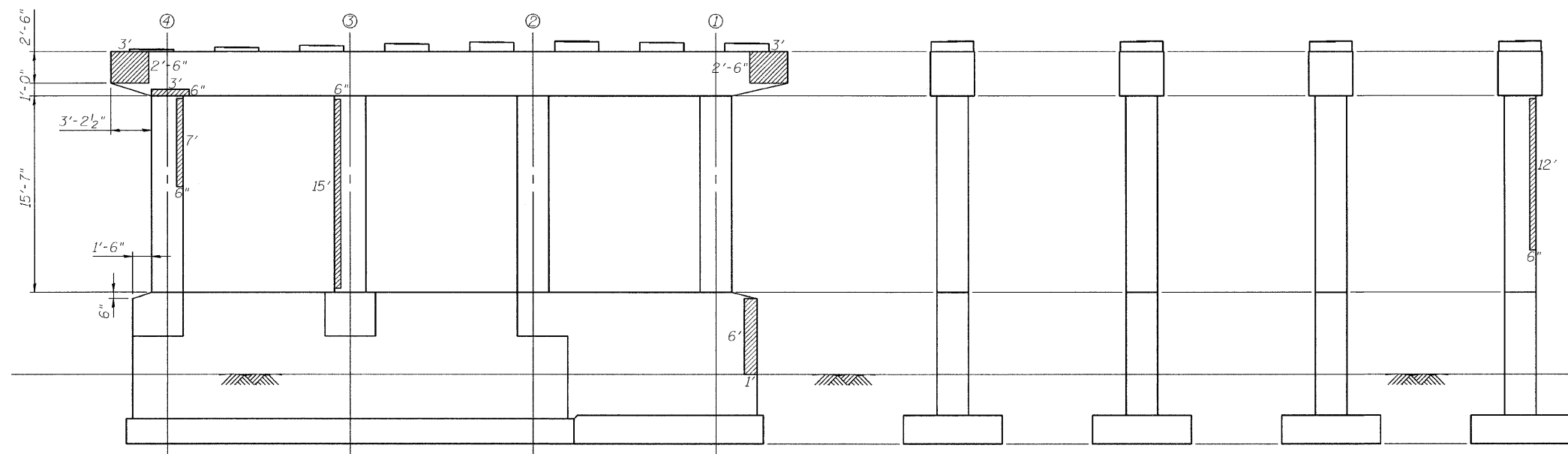
COLUMN 2
(Looking East)

COLUMN 3
(Looking East)

COLUMN 4
(Looking East)

SB PIER 3 REACTIONS
(BEAM LOADS ONLY)

	Span 3	Span 4
R _{DL} (k)	36.8	36.8
R _{sDL} (k)	5.0	4.9
R _{LL} (k)	33.5	33.6
R _I (k)	8.6	8.7
R _{Total} (k)	83.9	84.0



SB PIER 3 ELEVATION
(Looking North)

COLUMN 4
(Looking West)

COLUMN 3
(Looking West)

COLUMN 2
(Looking West)

COLUMN 1
(Looking West)

BILL OF MATERIAL

Item	Unit	Quantity
Structural Repair of Concrete (Depth Equal to or Less than 5")	Sq. Ft.	97

LEGEND

- Structural Repair of Concrete (Depth equal to or less than 5")

- Column Number

DESIGNED	E.E.J.
CHECKED	J.A.Z.
DRAWN	E.E.J.
CHECKED	J.A.Z.

SB PIER 3 REPAIRS
IL 50 (CICERO AVE) OVER BRC R.R.
F.A.P. 350, SECTION 50-1 VB-1-BR
COOK COUNTY

S.N. 016-2512 (S.B.), 016-2513 (N.B.)

DATE: 10-23-09

GRAEF
CHICAGO

ILLINOIS