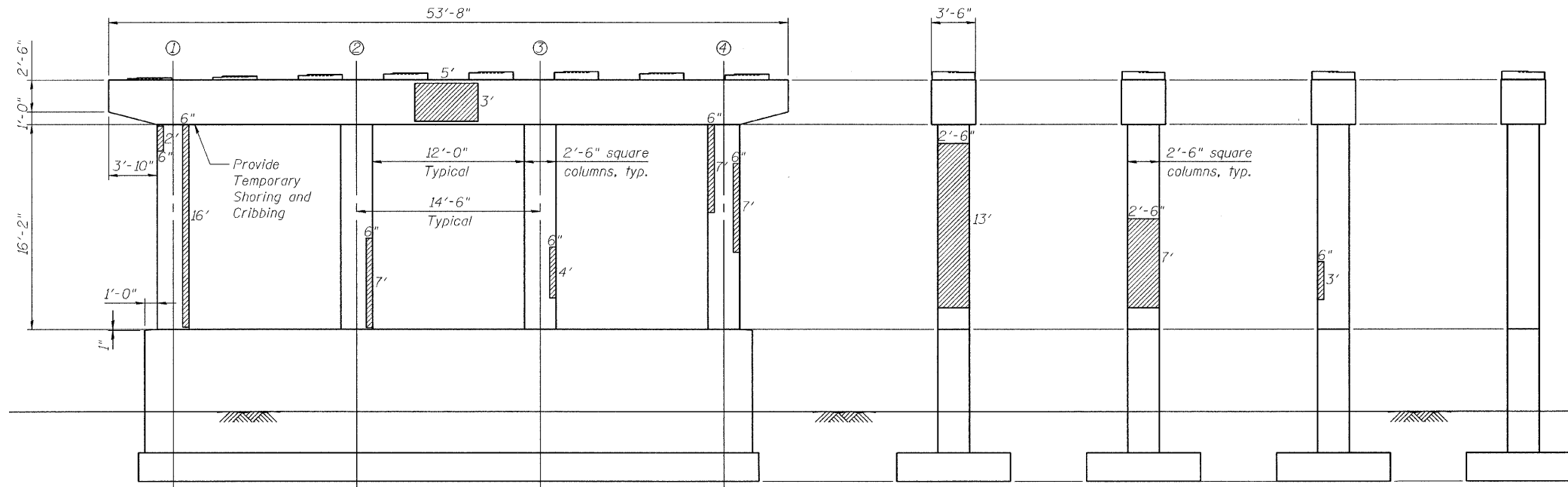


Contract # 60H76



NB PIER 4 ELEVATION
(Looking South)

COLUMN 1
(Looking East)

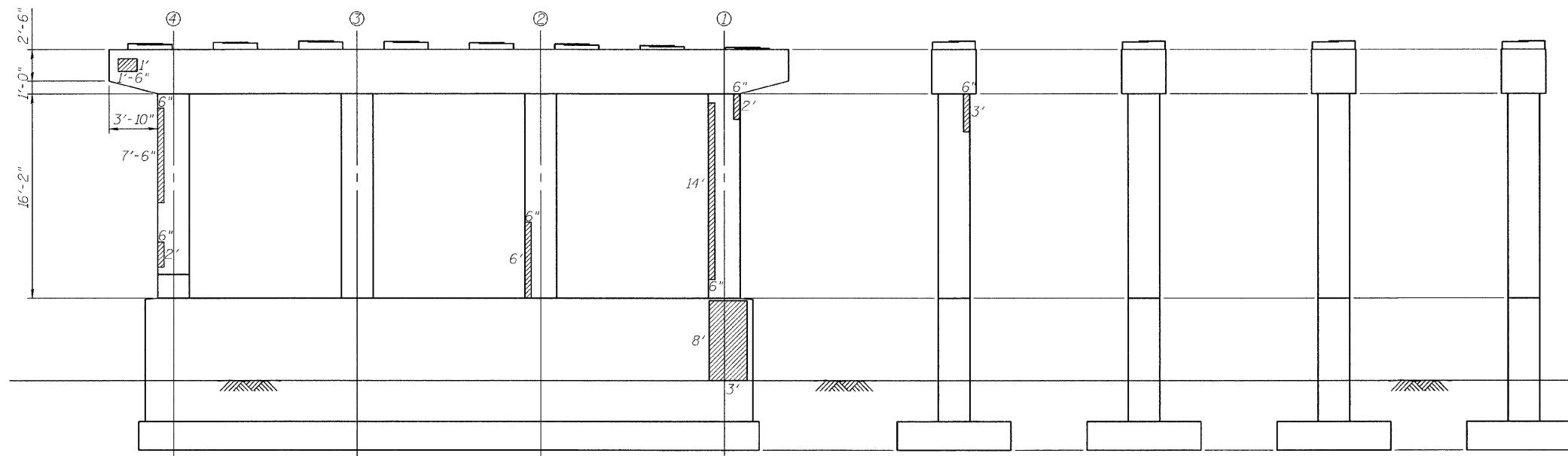
COLUMN 2
(Looking East)

COLUMN 3
(Looking East)

COLUMN 4
(Looking East)

**NB PIER 4 REACTIONS
(BEAM LOADS ONLY)**

	Span 4	Span 5
R_{DL} (k)	36.4	39.5
R_{SDL} (k)	4.3	4.4
R_{LL} (k)	32.9	33.6
R_T (k)	8.8	8.8
R_{Total} (k)	82.4	86.3



NB PIER 4 ELEVATION
(Looking North)

COLUMN 4
(Looking West)

COLUMN 3
(Looking West)

COLUMN 2
(Looking West)

COLUMN 1
(Looking West)

BILL OF MATERIAL

Item	Unit	Quantity
Structural Repair of Concrete (Depth Equal to or Less than 5")	Sq. Ft.	131

LEGEND

- Structural Repair of Concrete (Depth equal to or less than 5")
- Column Number

DESIGNED	E.E.J.
CHECKED	J.A.Z.
DRAWN	E.E.J.
CHECKED	J.A.Z.

NB PIER 4 REPAIRS
IL 50 (CICERO AVE) OVER BRC R.R.
F.A.P. 350, SECTION 50-1 VB-1-BR
COOK COUNTY
S.N. 016-2512 (S.B.), 016-2513 (N.B.)
DATE: 10-23-09
GRAEF
CHICAGO
ILLINOIS