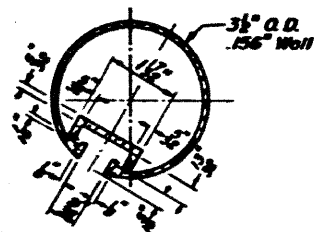


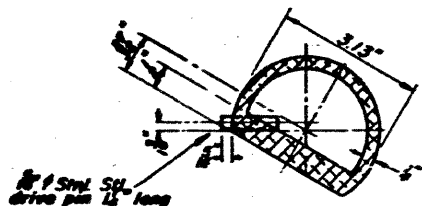
STATE OF ILLINOIS
DEPARTMENT OF TRANSPORTATION

MAP ROUTE NO.	SECTION	COUNTY	TOTAL SHEETS	SHEET NO.	SHEET NO. OF 16 SHEETS
350	50-1 VB-1-BR	Cook	33	26	
FED. ROAD DIST.		ILLINOIS		FED. AID PROJECT-	

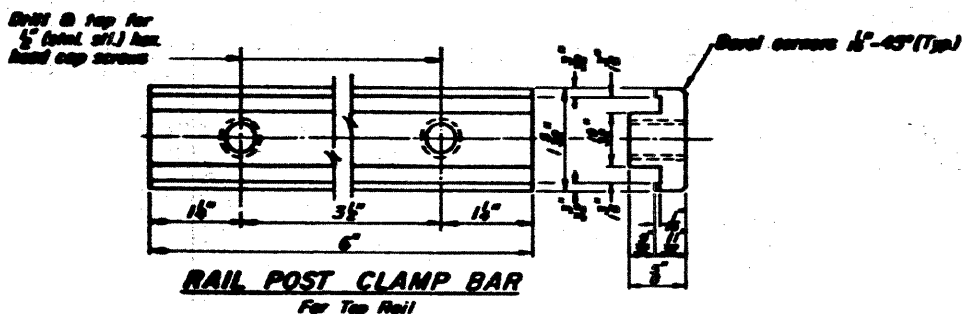
Contract # 60H76



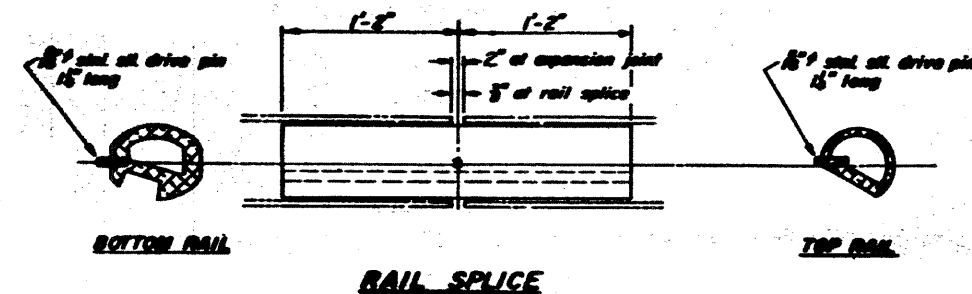
SECTION THRU TOP RAIL



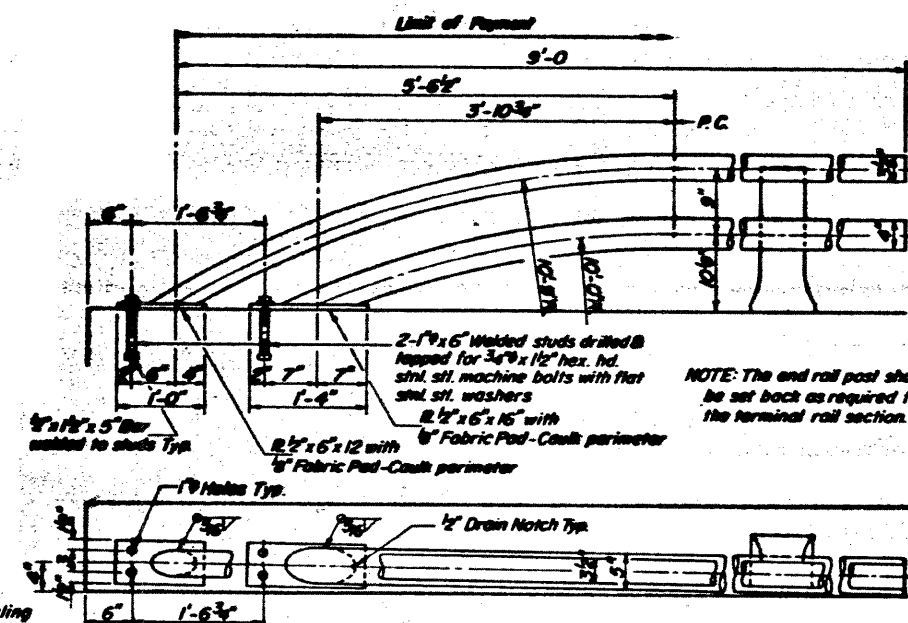
SECTION THRU SPLICE
TOP RAIL



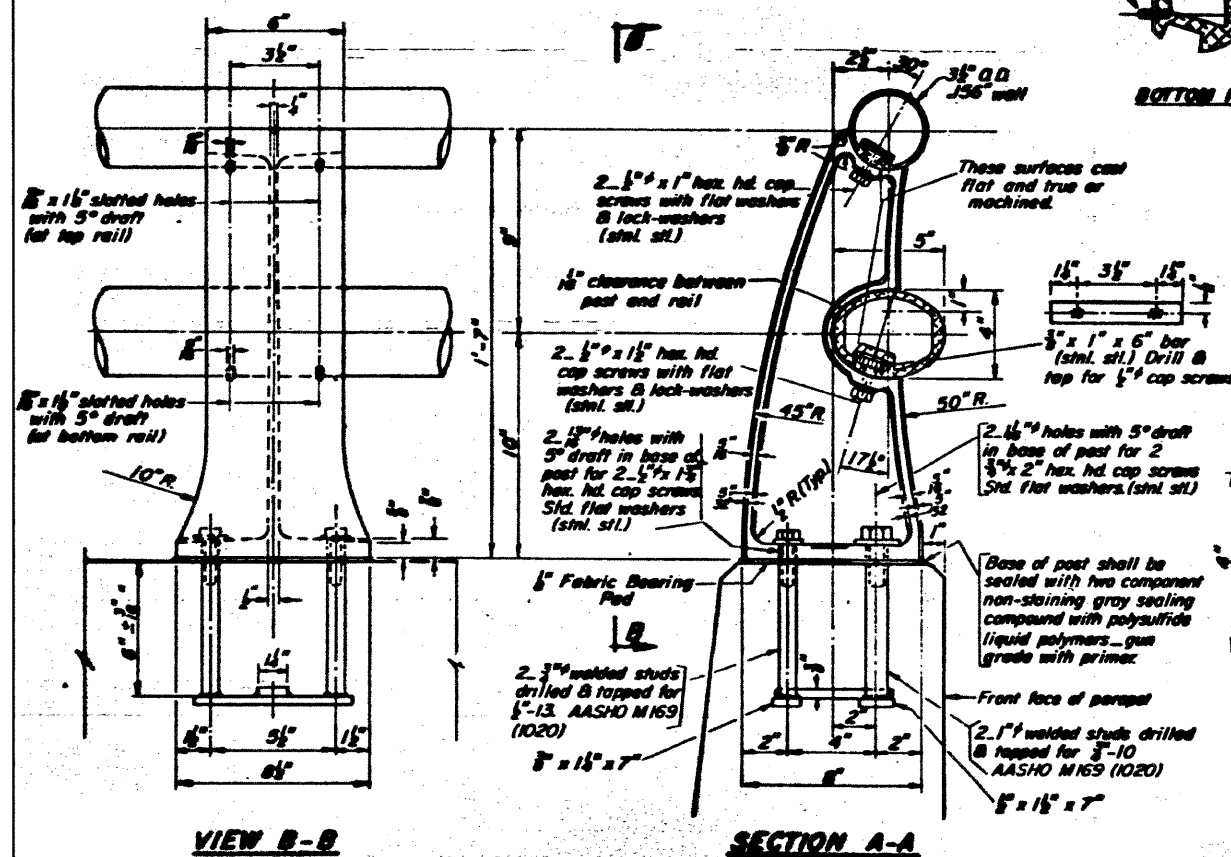
RAIL POST CLAMP BAR
For Top Rail



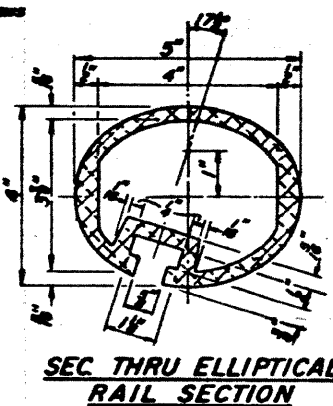
RAIL SPLICE



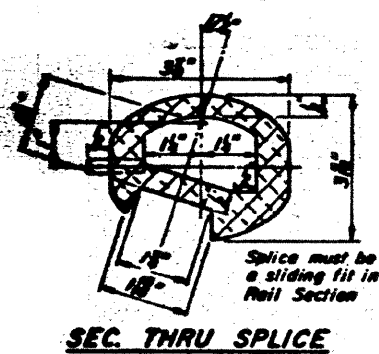
RAIL TERMINAL SECTION



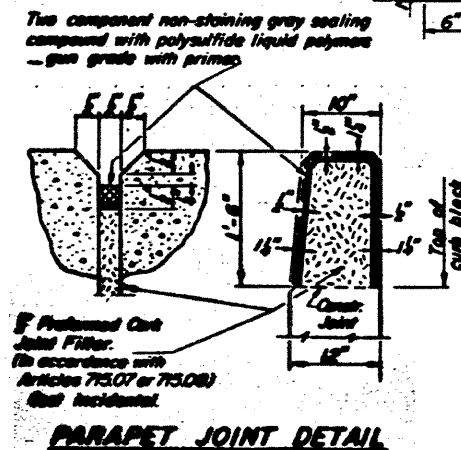
RAIL POST DETAILS



SEC. THRU ELLIPTICAL
RAIL SECTION



SEC. THRU SPLICE



PARAPET JOINT DETAIL

NOTES:

All Posts shall be normal to parapet.

All Aluminum Alloy Extruded Rail shall be supplied in modular lengths of 30 feet, except at the end of bridge or over open joints in bridge deck where the rail shall be attached to a minimum of 2 posts. If the rail is on a horizontal curve of 2300 foot radius or less, the modular lengths may be reduced but shall be attached to a minimum of 2 posts.

All joints in rail shall be spliced per detail.

Provide 1/4" and 2-1/16" Aluminum Shims for 25% of the Posts. Rail elements shall be parallel to Grade - high spots shall be ground and low spots shimmed.

Railing shall be in accordance with Section 508 of the Standard Specifications, except as noted, and shall be paid for at the contract unit price per linear foot for ALUMINUM RAILING, TYPE L.

Aluminum alloy rail shall conform to ASTM B 221 alloy 6061-T6 or 6351-T5 with min. yield 35 ksi, min. tensile 38 ksi, and elongation of 10% in 2 inches.

FOR INFORMATION
ONLY

DESIGNED	E.E.J.
CHECKED	J.A.Z.
DRAWN	E.E.J.
CHECKED	J.A.Z.

RAILING
IL 50 (CICERO AVE) OVER BRC R.R.
F.A.P. 350, SECTION 50-1 VB-1-BR
COOK COUNTY
S.N. 016-2512 (S.B.), 016-2513 (N.B.)
DATE: 10-23-09
GRAEF
CHICAGO ILLINOIS