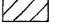
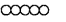
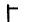
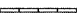


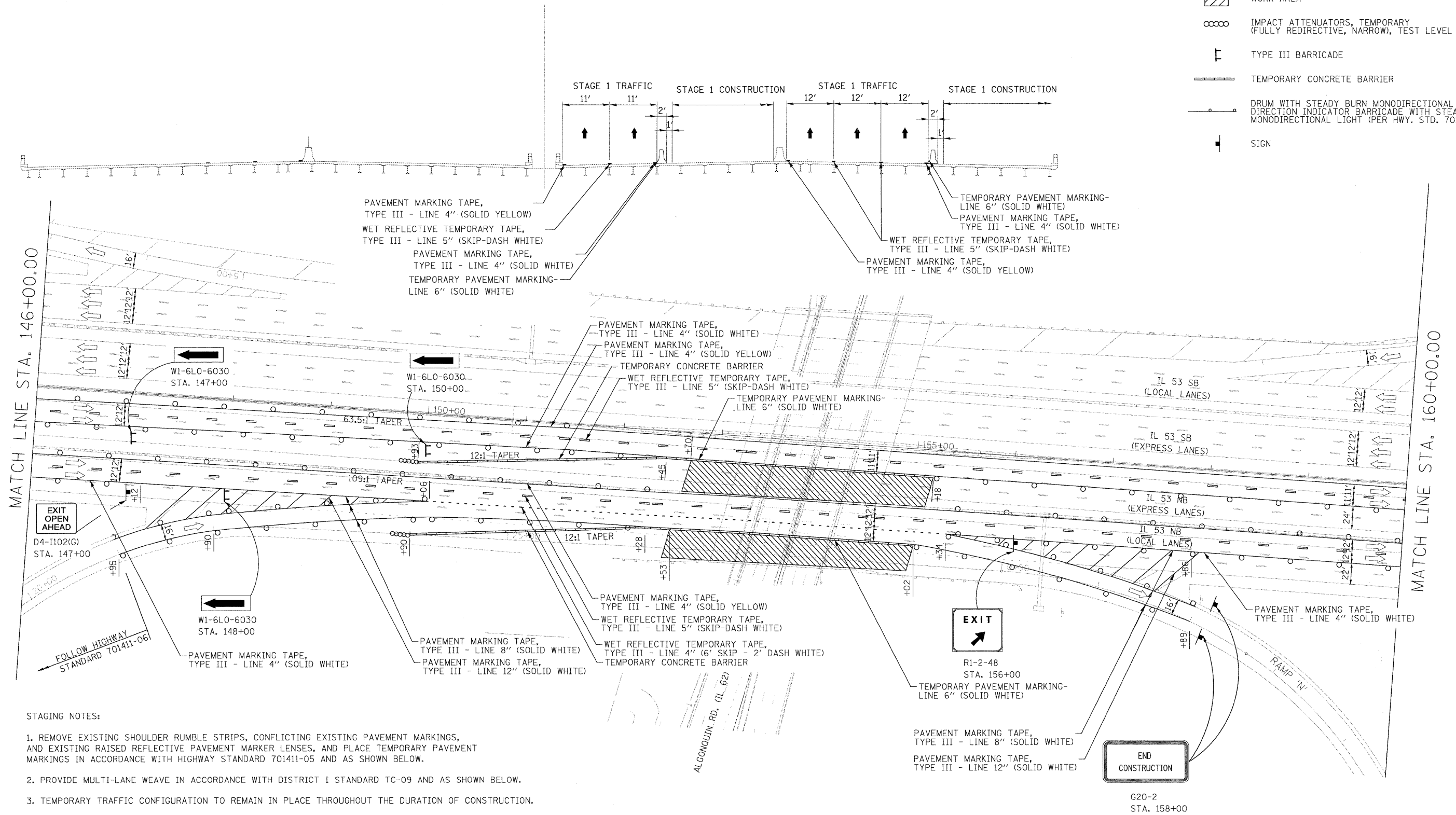


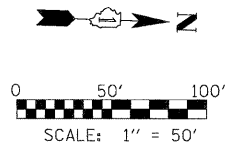
LEGEND

-  WORK AREA
-  IMPACT ATTENUATORS, TEMPORARY (FULLY REDIRECTIVE, NARROW), TEST LEVEL 3
-  TYPE III BARRICADE
-  TEMPORARY CONCRETE BARRIER
-  DRUM WITH STEADY BURN MONODIRECTIONAL LIGHT / DIRECTION INDICATOR BARRICADE WITH STEADY BURN MONODIRECTIONAL LIGHT (PER HWY. STD. 701401-05)
-  SIGN



STAGING NOTES:

1. REMOVE EXISTING SHOULDER RUMBLE STRIPS, CONFLICTING EXISTING PAVEMENT MARKINGS, AND EXISTING RAISED REFLECTIVE PAVEMENT MARKER LENSES, AND PLACE TEMPORARY PAVEMENT MARKINGS IN ACCORDANCE WITH HIGHWAY STANDARD 701411-05 AND AS SHOWN BELOW.
2. PROVIDE MULTI-LANE WEAVE IN ACCORDANCE WITH DISTRICT I STANDARD TC-09 AND AS SHOWN BELOW.
3. TEMPORARY TRAFFIC CONFIGURATION TO REMAIN IN PLACE THROUGHOUT THE DURATION OF CONSTRUCTION.
4. THIS WORK SHALL BE INCLUDED IN THE COST PER LUMP SUM FOR TRAFFIC CONTROL AND PROTECTION (EXPRESSWAYS).



FILE NAME = #FILE#	USER NAME = #USER#	DESIGNED - CRV	REVISED -	<b>STATE OF ILLINOIS DEPARTMENT OF TRANSPORTATION</b>	<b>MAINTENANCE OF TRAFFIC PLAN STAGE 1 - NB</b>			F.A.I. RTE.	SECTION	COUNTY	TOTAL SHEETS	SHEET NO.
	PLOT SCALE = #SCALE#	DRAWN - CRV	REVISED -		290	(531-3.1, 0305-302 K) RS-5	COOK	3/4	50			
PLOT DATE = #DATE#	CHECKED - FML	DATE - 12/2009	REVISED -	SCALE: 1"=50'	SHEET NO. 4 OF 24 SHEETS	STA. 146+00 TO STA. 160+00	FED. ROAD DIST. NO. ILLINOIS FED. AID PROJECT CONTRACT NO. 60138					