


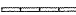
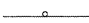



LEGEND

-  WORK AREA
-  IMPACT ATTENUATORS, TEMPORARY (FULLY REDIRECTIVE, NARROW), TEST LEVEL 3
-  TYPE III BARRICADE
-  TEMPORARY CONCRETE BARRIER
-  DRUM WITH STEADY BURN MONODIRECTIONAL LIGHT/DIRECTION INDICATOR BARRICADE WITH STEADY BURN MONODIRECTIONAL LIGHT (PER HWY. STD. 701401-05)
-  SIGN

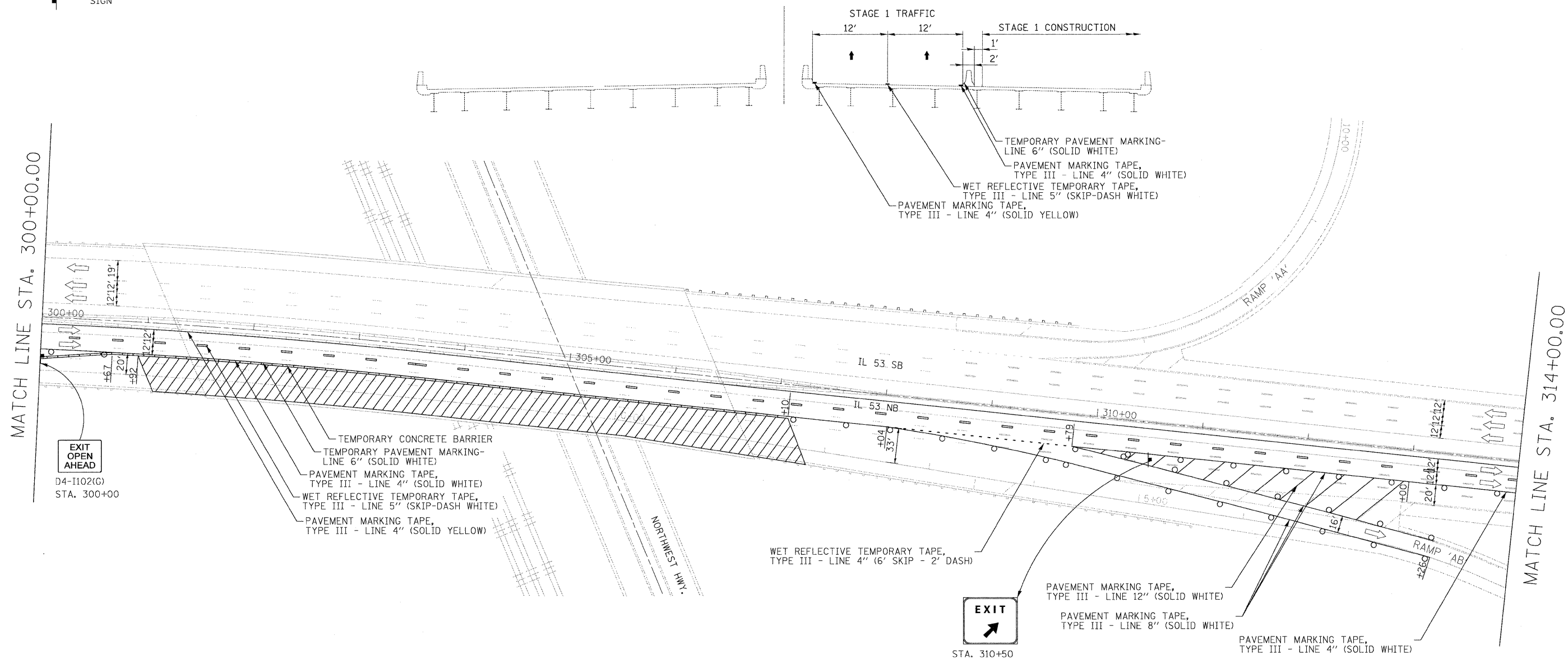
STAGE I REMOVAL & CONSTRUCTION

(LOOKING NORTH)

☉ FAI ROUTE 290

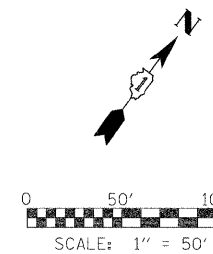
S.N. 016-1119

S.N. 016-0374



STAGING NOTES:

1. REMOVE EXISTING SHOULDER RUMBLE STRIPS, CONFLICTING EXISTING PAVEMENT MARKINGS, AND EXISTING RAISED REFLECTIVE PAVEMENT MARKER LENSES, AND PLACE TEMPORARY PAVEMENT MARKINGS IN ACCORDANCE WITH HIGHWAY STANDARD 701411-05 AND AS SHOWN BELOW.
2. TEMPORARY TRAFFIC CONFIGURATION TO REMAIN IN PLACE THROUGHOUT THE DURATION OF CONSTRUCTION.
3. THIS WORK SHALL BE INCLUDED IN THE COST PER LUMP SUM FOR TRAFFIC CONTROL AND PROTECTION (EXPRESSWAYS).



FILE NAME = #FILE#	USER NAME = #USER#	DESIGNED - CRV	REVISED -	STATE OF ILLINOIS DEPARTMENT OF TRANSPORTATION	MAINTENANCE OF TRAFFIC PLAN STAGE 1 - NB			F.A.I. RTE.	SECTION	COUNTY	TOTAL SHEETS	SHEET NO.
	PLOT SCALE = #SCALE#	CHECKED - FML	REVISED -		290	(531-3.1, 0305-302 K) RS-5	COOK	314	61	CONTRACT NO. 60138		
PLOT DATE = #DATE#	DATE - 12/2009	REVISED -		SCALE: 1"=50'	SHEET NO. 15 OF 24 SHEETS	STA. 300+00 TO STA. 314+00	FED. ROAD DIST. NO.	ILLINOIS	FED. AID PROJECT			