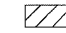



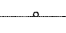

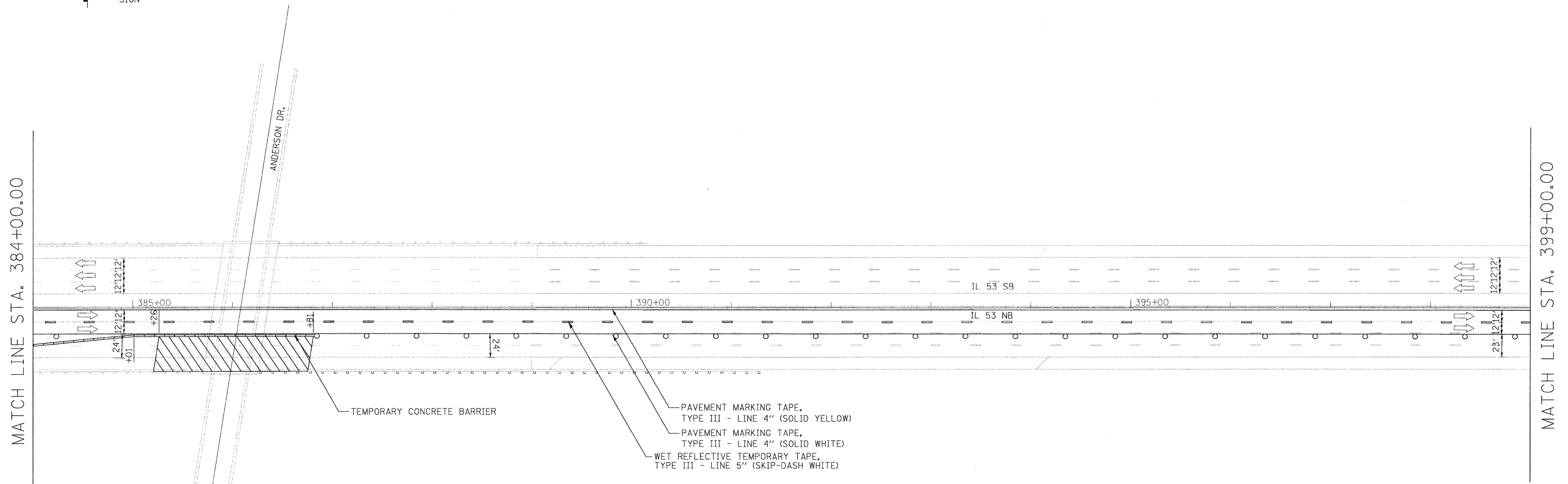


LEGEND

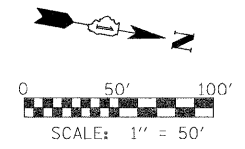
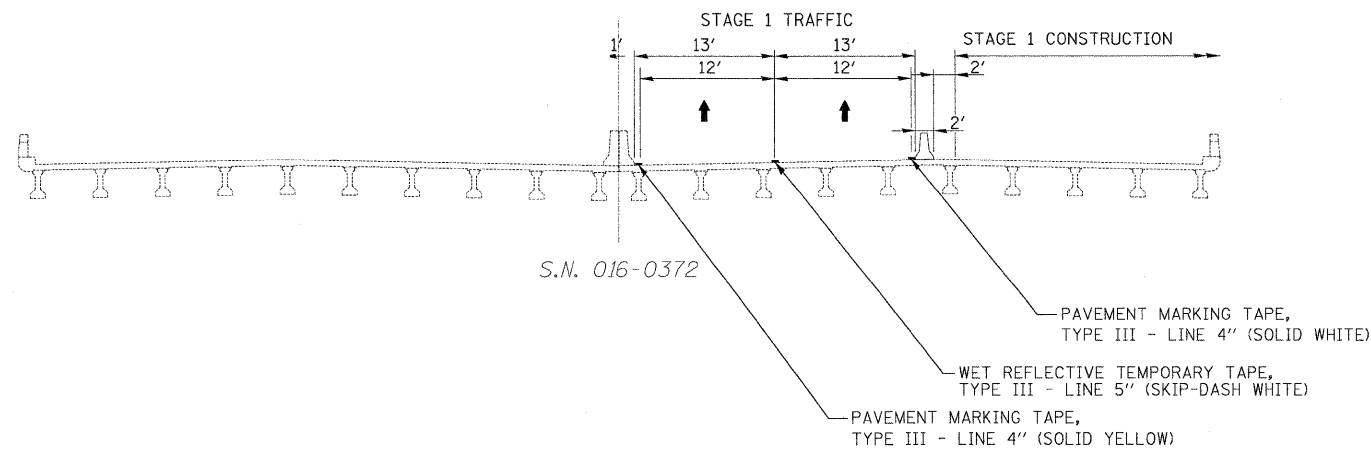
-  WORK AREA
-  IMPACT ATTENUATORS, TEMPORARY (FULLY REDIRECTIVE, NARROW), TEST LEVEL 3
-  TYPE III BARRICADE
-  TEMPORARY CONCRETE BARRIER
-  DRUM WITH STEADY BURN MONODIRECTIONAL LIGHT / DIRECTION INDICATOR BARRICADE WITH STEADY BURN MONODIRECTIONAL LIGHT (PER HWY. STD. 701401-05)
-  SIGN

STAGING NOTES:

1. REMOVE EXISTING SHOULDER RUMBLE STRIPS, CONFLICTING EXISTING PAVEMENT MARKINGS, AND EXISTING RAISED REFLECTIVE PAVEMENT MARKER LENSES, AND PLACE TEMPORARY PAVEMENT MARKINGS IN ACCORDANCE WITH HIGHWAY STANDARD 701411-05 AND AS SHOWN BELOW.
2. TEMPORARY TRAFFIC CONFIGURATION TO REMAIN IN PLACE THROUGHOUT THE DURATION OF CONSTRUCTION.
3. THIS WORK SHALL BE INCLUDED IN THE COST PER LUMP SUM FOR TRAFFIC CONTROL AND PROTECTION (EXPRESSWAYS).



STAGE I REMOVAL & CONSTRUCTION
(LOOKING NORTH)
@ FAI ROUTE 290



FILE NAME =	USER NAME = *USER*	DESIGNED - CRV	REVISED -
FILEL		DRAWN - CRV	REVISED -
	PLOT SCALE = *SCALE*	CHECKED - FML	REVISED -
	PLOT DATE = *DATE*	DATE - 12/2009	REVISED -

STATE OF ILLINOIS
DEPARTMENT OF TRANSPORTATION

MAINTENANCE OF TRAFFIC PLAN
STAGE 1 - NB

SCALE: 1"=50' SHEET NO. 21 OF 24 SHEETS STA. 384+00 TO STA. 399+00

F.A.I. RTE.	SECTION	COUNTY	TOTAL SHEETS	SHEET NO.
290	(531-3.1, 0305-302 K) RS-5	COOK	314	67
CONTRACT NO. 60I38				
FED. ROAD DIST. NO.		ILLINOIS FED. AID PROJECT		