
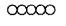
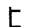



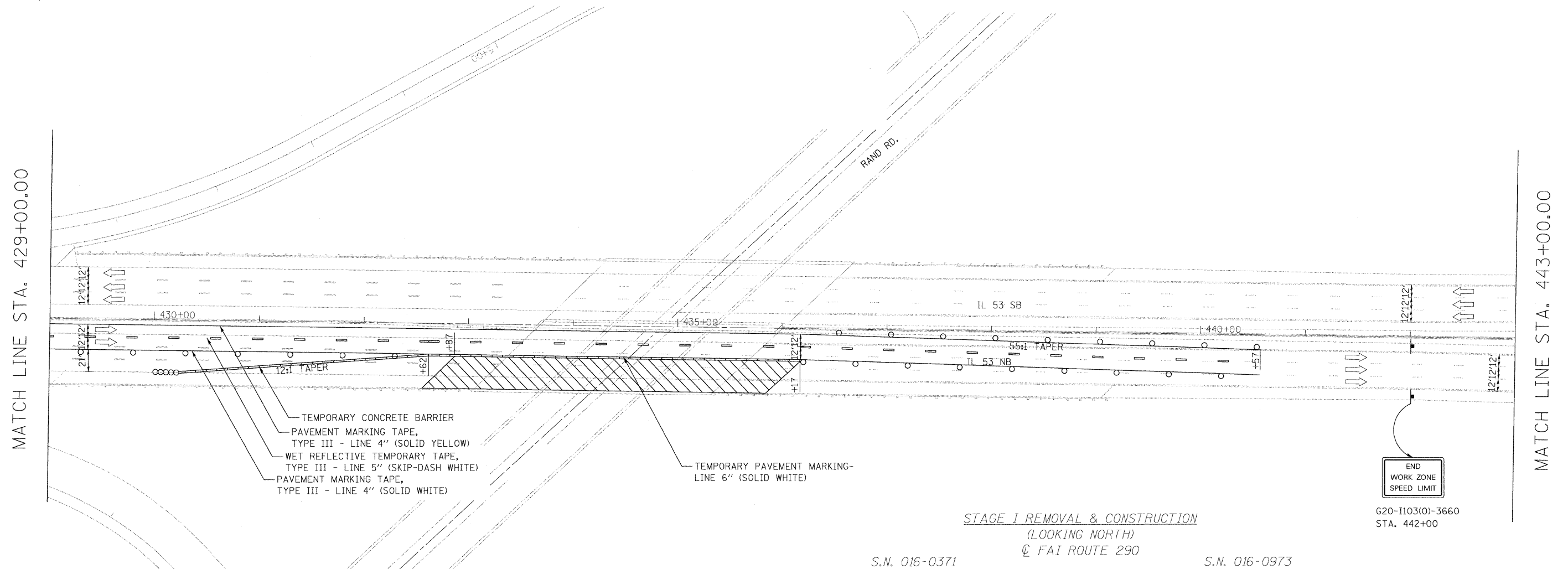


LEGEND

-  WORK AREA
-  IMPACT ATTENUATORS, TEMPORARY (FULLY REDIRECTIVE, NARROW, TEST LEVEL 3)
-  TYPE III BARRICADE
-  TEMPORARY CONCRETE BARRIER
-  DRUM WITH STEADY BURN MONODIRECTIONAL LIGHT / DIRECTION INDICATOR BARRICADE WITH STEADY BURN MONODIRECTIONAL LIGHT (PER HWY. STD. 701401-05)
-  SIGN

STAGING NOTES:

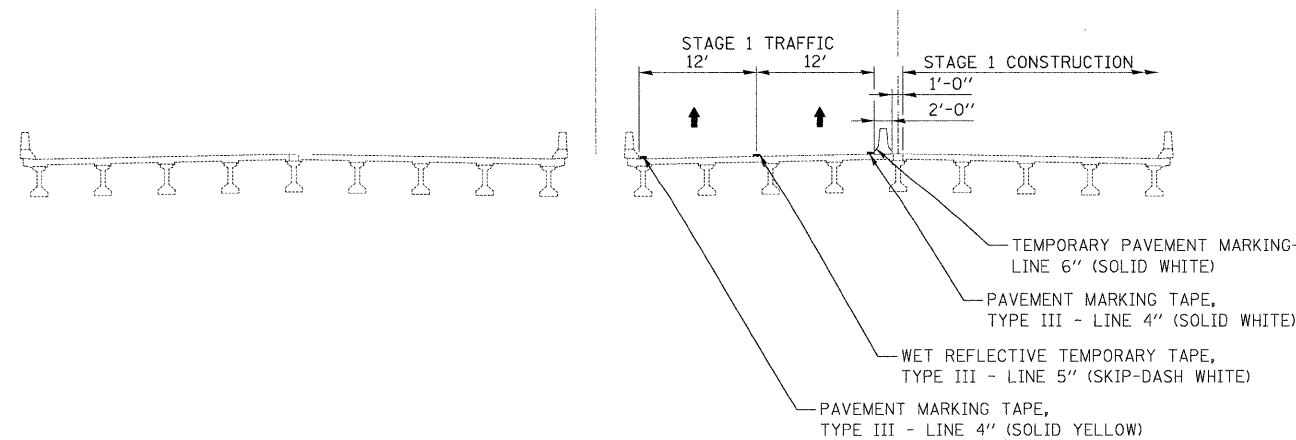
1. REMOVE EXISTING SHOULDER RUMBLE STRIPS, CONFLICTING EXISTING PAVEMENT MARKINGS, AND EXISTING RAISED REFLECTIVE PAVEMENT MARKER LENSES, AND PLACE TEMPORARY PAVEMENT MARKINGS IN ACCORDANCE WITH HIGHWAY STANDARD 701411-05 AND AS SHOWN BELOW.
2. TEMPORARY TRAFFIC CONFIGURATION TO REMAIN IN PLACE THROUGHOUT THE DURATION OF CONSTRUCTION.
3. THIS WORK SHALL BE INCLUDED IN THE COST PER LUMP SUM FOR TRAFFIC CONTROL AND PROTECTION (EXPRESSWAYS).



STAGE I REMOVAL & CONSTRUCTION
(LOOKING NORTH)
Q FAI ROUTE 290

S.N. 016-0371

S.N. 016-0973



FILE NAME =	USER NAME = #USER#	DESIGNED - CRV	REVISED -	STATE OF ILLINOIS DEPARTMENT OF TRANSPORTATION	MAINTENANCE OF TRAFFIC PLAN STAGE 1 - NB			F.A.J. RTE. 290	SECTION (531-3.1, 0305-302 K) RS-5	COUNTY COOK	TOTAL SHEETS 314	SHEET NO. 70
FILE#		DRAWN - CRV	REVISED -		SCALE: 1"=50'	SHEET NO. 24 OF 24 SHEETS	STA. 429+00 TO STA. 443+00	CONTRACT NO. 60I38				
		CHECKED - FML	REVISED -		FED. ROAD DIST. NO. [ILLINOIS] FED. AID PROJECT							
		DATE - 12/2009	REVISED -									