

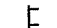



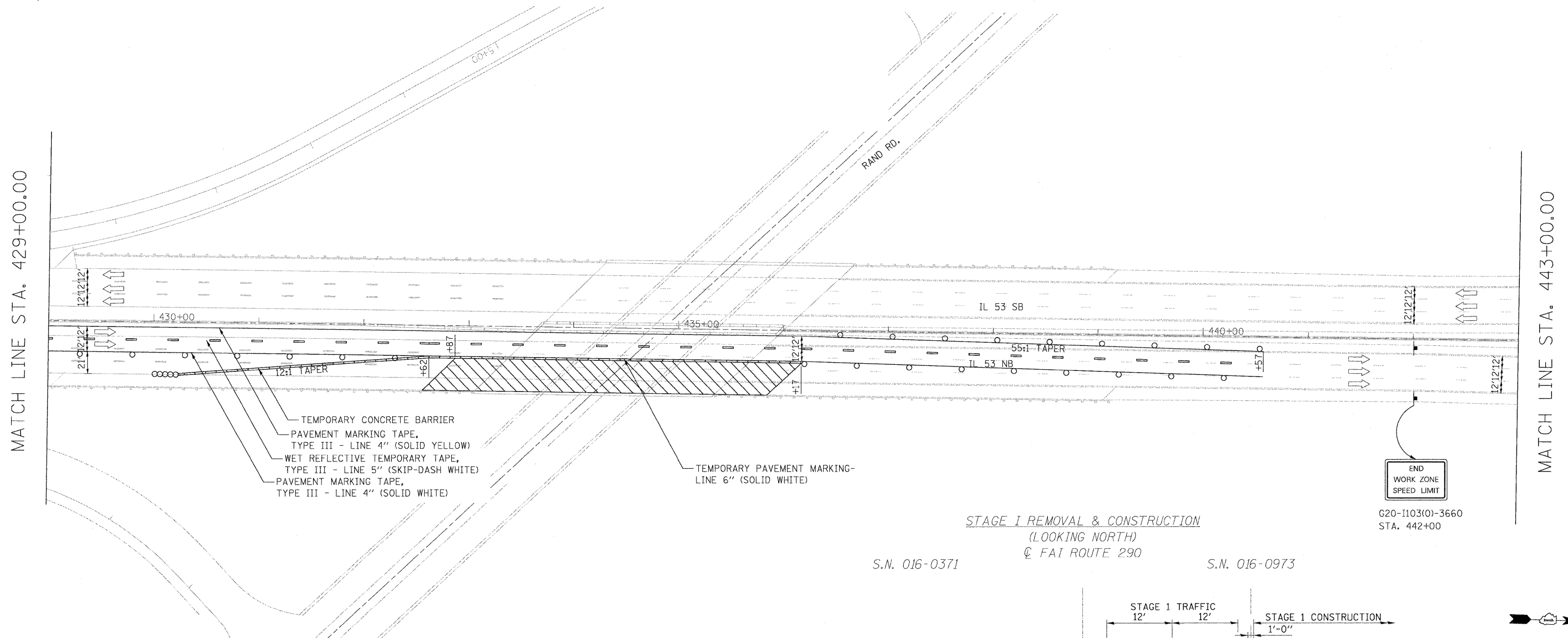


LEGEND

-  WORK AREA
-  IMPACT ATTENUATORS, TEMPORARY (FULLY REDIRECTIVE, NARROW), TEST LEVEL 3
-  TYPE III BARRICADE
-  TEMPORARY CONCRETE BARRIER
-  DRUM WITH STEADY BURN MONODIRECTIONAL LIGHT / DIRECTION INDICATOR BARRICADE WITH STEADY BURN MONODIRECTIONAL LIGHT (PER HWY. STD. 701401-05)
-  SIGN

PRE-STAGE (FAI 290)

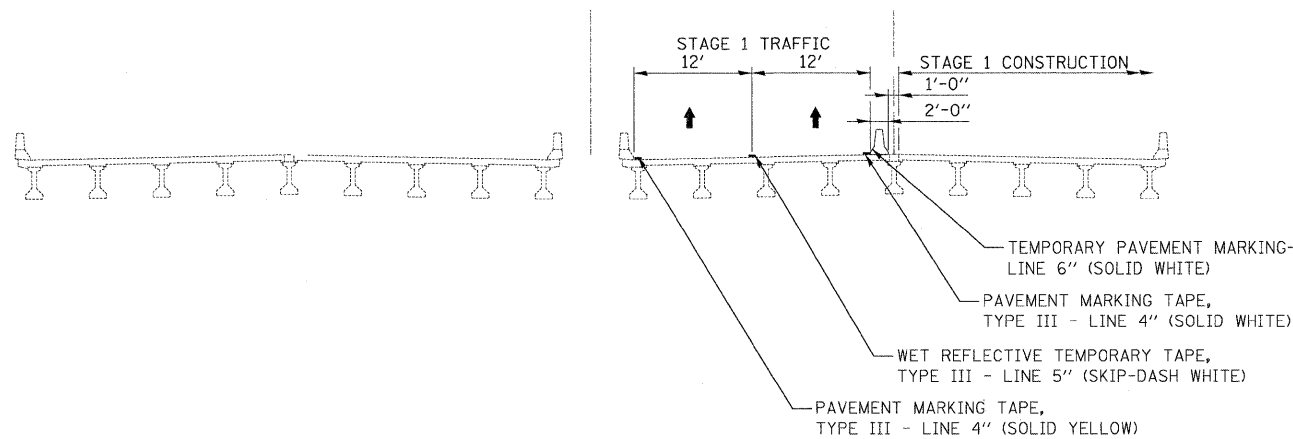
1. REMOVE EXISTING SHOULDER RUMBLE STRIPS, CONFLICTING EXISTING PAVEMENT MARKINGS, AND EXISTING RAISED REFLECTIVE PAVEMENT MARKER LENSES, AND PLACE TEMPORARY PAVEMENT MARKINGS AS SHOWN BELOW.
2. PROVIDE MULTI-LANE WEAVE IN ACCORDANCE WITH DISTRICT I STANDARD TC-09 AND AS SHOWN BELOW.
3. FAI 290 TEMPORARY TRAFFIC CONFIGURATION TO REMAIN IN PLACE THROUGHOUT THE DURATION OF CONSTRUCTION.
4. UPON COMPLETION OF CONSTRUCTION AND REMOVAL OF TRAFFIC CONTROL, PROVIDE PROPOSED PAVEMENT MARKINGS AND MARKERS TO REVERT TO EXISTING MARKINGS CONFIGURATION.
5. THIS WORK SHALL BE INCLUDED IN THE COST PER LUMP SUM FOR TRAFFIC CONTROL AND PROTECTION (EXPRESSWAYS).



STAGE I REMOVAL & CONSTRUCTION
(LOOKING NORTH)
@ FAI ROUTE 290

S.N. 016-0371

S.N. 016-0973



| | | | | | | | | | | | | |
|-------------|--------------------|----------------|-----------|---|---|---------------------------|----------------------------|--------------------|------------------------------------|-------------|------------------|--------------|
| FILE NAME = | USER NAME = #USER# | DESIGNED - CRV | REVISED - | STATE OF ILLINOIS DEPARTMENT OF TRANSPORTATION | MAINTENANCE OF TRAFFIC PLAN STAGE 1 - NB | | | F.A.I. RTE. 290 | SECTION (531-3.1, 0305-302 K) RS-5 | COUNTY COOK | TOTAL SHEETS 314 | SHEET NO. 77 |
| #FILE# | | DRAWN - CRV | REVISED - | | SCALE: 1"=50' | SHEET NO. 24 OF 24 SHEETS | STA. 429+00 TO STA. 443+00 | CONTRACT NO. 60I38 | | | | |
| | | CHECKED - FML | REVISED - | | FED. ROAD DIST. NO. [ILLINOIS] FED. AID PROJECT | | | | | | | |
| | | DATE - 12/2009 | REVISED - | | | | | | | | | |