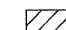

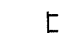
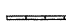
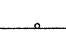

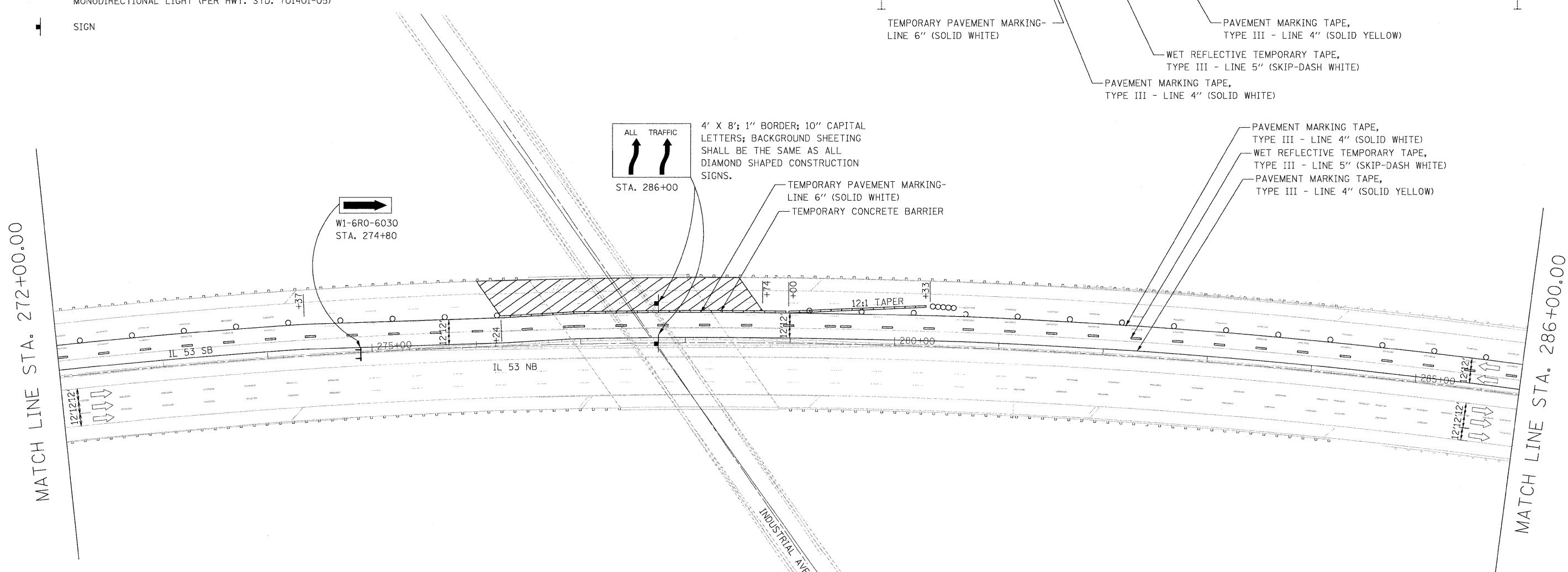
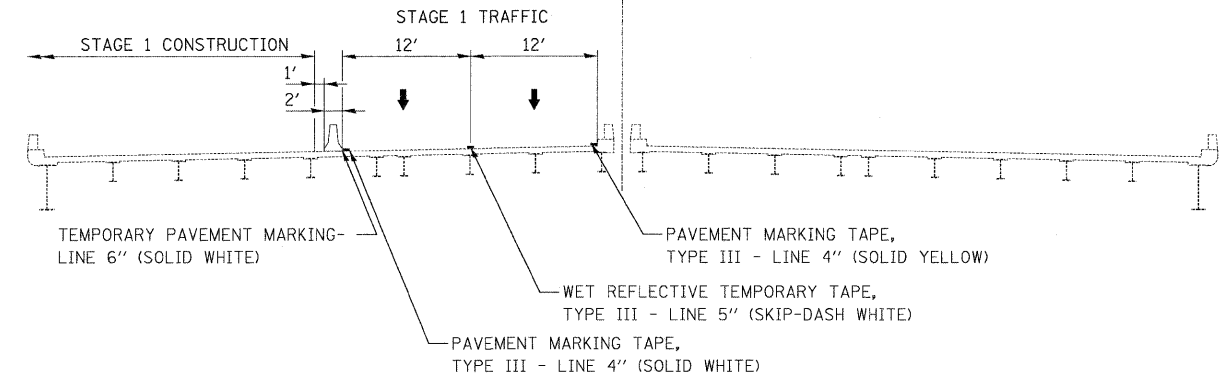


**LEGEND**

-  WORK AREA
-  IMPACT ATTENUATORS, TEMPORARY (FULLY REDIRECTIVE, NARROW), TEST LEVEL 3
-  TYPE III BARRICADE
-  TEMPORARY CONCRETE BARRIER
-  DRUM WITH STEADY BURN MONODIRECTIONAL LIGHT / DIRECTION INDICATOR BARRICADE WITH STEADY BURN MONODIRECTIONAL LIGHT (PER HWY. STD. 701401-05)
-  SIGN

STAGE I REMOVAL & CONSTRUCTION  
(LOOKING NORTH)  
S.N. 016-1120 S.N. 016-0375



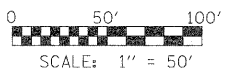
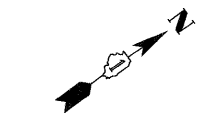
**ALL TRAFFIC**  
↑ ↑  
STA. 286+00

4' X 8'; 1" BORDER; 10" CAPITAL LETTERS; BACKGROUND SHEETING SHALL BE THE SAME AS ALL DIAMOND SHAPED CONSTRUCTION SIGNS.

PAVEMENT MARKING TAPE, TYPE III - LINE 4" (SOLID WHITE)  
WET REFLECTIVE TEMPORARY TAPE, TYPE III - LINE 5" (SKIP-DASH WHITE)  
PAVEMENT MARKING TAPE, TYPE III - LINE 4" (SOLID YELLOW)

**STAGING NOTES:**

1. REMOVE EXISTING SHOULDER RUMBLE STRIPS, CONFLICTING EXISTING PAVEMENT MARKINGS, AND EXISTING RAISED REFLECTIVE PAVEMENT MARKER LENSES, AND PLACE TEMPORARY PAVEMENT MARKINGS IN ACCORDANCE WITH HIGHWAY STANDARD 701411-05 AND AS SHOWN BELOW.
2. TEMPORARY TRAFFIC CONFIGURATION TO REMAIN IN PLACE THROUGHOUT THE DURATION OF CONSTRUCTION.
3. THIS WORK SHALL BE INCLUDED IN THE COST PER LUMP SUM FOR TRAFFIC CONTROL AND PROTECTION (EXPRESSWAYS).



FILE NAME = #FILE#	USER NAME = #USER#	DESIGNED - CRV	REVISED -
		DRAWN - CRV	REVISED -
		CHECKED - FML	REVISED -
		DATE - 12/2009	REVISED -

**STATE OF ILLINOIS  
DEPARTMENT OF TRANSPORTATION**

**MAINTENANCE OF TRAFFIC PLAN  
STAGE 1 - SB**

SCALE: 1"=50'    SHEET NO. 8 OF 21 SHEETS    STA. 272+00 TO STA. 286+00

F.A.I. RTE.	SECTION	COUNTY	TOTAL SHEETS	SHEET NO.
290	(531-3.1, 0305-302 K) RS-5	COOK	34	79
FED. ROAD DIST. NO.    ILLINOIS FED. AID PROJECT			CONTRACT NO. 60138	