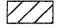
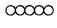
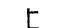

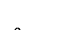

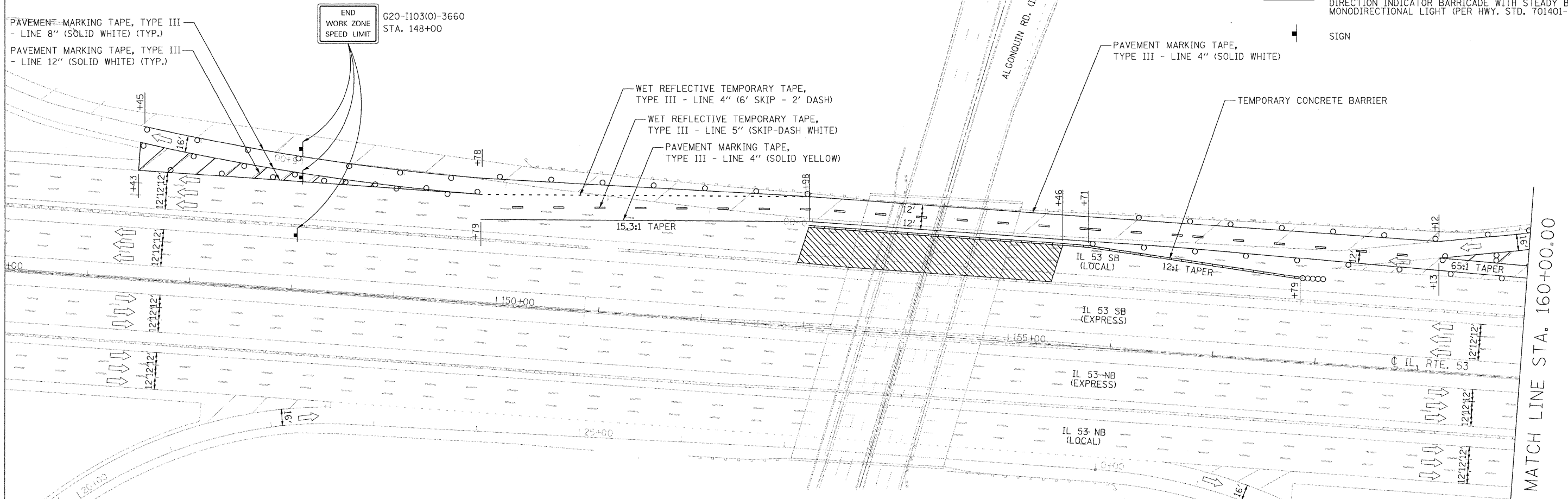


STAGING NOTES:

1. REMOVE EXISTING SHOULDER RUMBLE STRIPS, CONFLICTING EXISTING PAVEMENT MARKINGS, AND EXISTING RAISED REFLECTIVE PAVEMENT MARKER LENSES, AND PLACE TEMPORARY PAVEMENT MARKINGS IN ACCORDANCE WITH HIGHWAY STANDARD 701411-05 AND AS SHOWN BELOW.
2. PROVIDE LANE WEAVE IN ACCORDANCE WITH DISTRICT I STANDARD TC-09 AND AS SHOWN BELOW.
3. TEMPORARY TRAFFIC CONFIGURATION TO REMAIN IN PLACE THROUGHOUT THE DURATION OF CONSTRUCTION.
4. THIS WORK SHALL BE INCLUDED IN THE COST PER LUMP SUM FOR TRAFFIC CONTROL AND PROTECTION (EXPRESSWAYS).

LEGEND

-  WORK AREA
-  IMPACT ATTENUATORS, TEMPORARY (FULLY REDIRECTIVE, NARROW), TEST LEVEL 3
-  TYPE III BARRICADE
-  TEMPORARY CONCRETE BARRIER
-  DRUM WITH STEADY BURN MONODIRECTIONAL LIGHT / DIRECTION INDICATOR BARRICADE WITH STEADY BURN MONODIRECTIONAL LIGHT (PER HWY. STD. 701401-05)
-  SIGN



END WORK ZONE SPEED LIMIT
G20-I103(0)-3660
STA. 148+00

PAVEMENT MARKING TAPE, TYPE III - LINE 8" (SOLID WHITE) (TYP.)
PAVEMENT MARKING TAPE, TYPE III - LINE 12" (SOLID WHITE) (TYP.)

WET REFLECTIVE TEMPORARY TAPE, TYPE III - LINE 4" (6' SKIP - 2' DASH)
WET REFLECTIVE TEMPORARY TAPE, TYPE III - LINE 5" (SKIP-DASH WHITE)
PAVEMENT MARKING TAPE, TYPE III - LINE 4" (SOLID YELLOW)

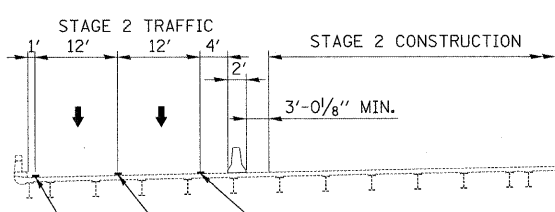
PAVEMENT MARKING TAPE, TYPE III - LINE 4" (SOLID WHITE)

TEMPORARY CONCRETE BARRIER

S.N. 016-2133

STAGE II REMOVAL & CONSTRUCTION (LOOKING NORTH)

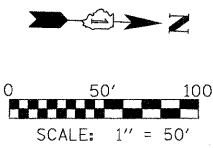
S.N. 016-0378



PAVEMENT MARKING TAPE, TYPE III - LINE 4" (SOLID YELLOW)
WET REFLECTIVE TEMPORARY TAPE, TYPE III - LINE 5" (SKIP-DASH WHITE)
PAVEMENT MARKING TAPE, TYPE III - LINE 4" (SOLID WHITE)

NOTE:

1. VERTICAL PANELS TO BE PLACED EVERY 100' (CURVED SECTION) OR 200' (TANGENT SECTION) ON THE OUTSIDE SHOULDER WHERE THERE IS NO GUARD RAIL OR BARRIER PRESENT.



FILE NAME = #FILEL*	USER NAME = #USER*	DESIGNED - CRV	REVISED -
		DRAWN - CRV	REVISED -
		CHECKED - FML	REVISED -
		DATE - 12/2009	REVISED -

STATE OF ILLINOIS
DEPARTMENT OF TRANSPORTATION

MAINTENANCE OF TRAFFIC PLAN STAGE 2 - SB		
SCALE: 1"=50'	SHEET NO. 1 OF 21 SHEETS	STA. 146+00 TO STA. 160+00

F.A.I. RTE.	SECTION	COUNTY	TOTAL SHEETS	SHEET NO.
290	(531-3.1, 0305-302 K) RS-5	COOK	314	117
FED. ROAD DIST. NO. ILLINOIS FED. AID PROJECT			CONTRACT NO. 60138	