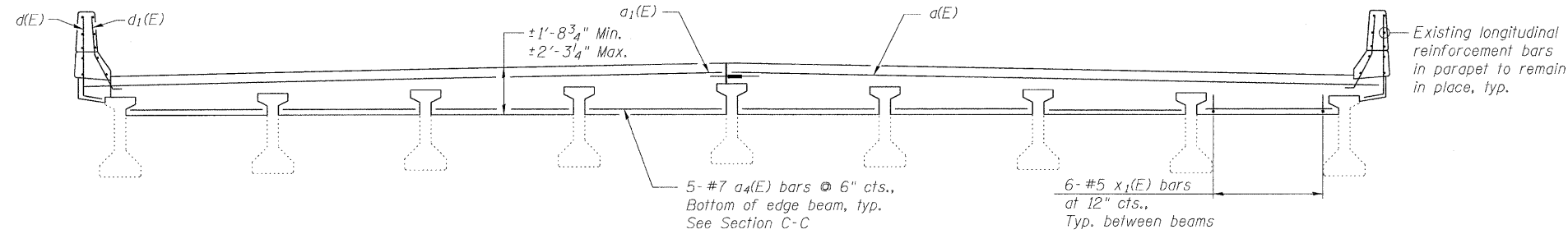
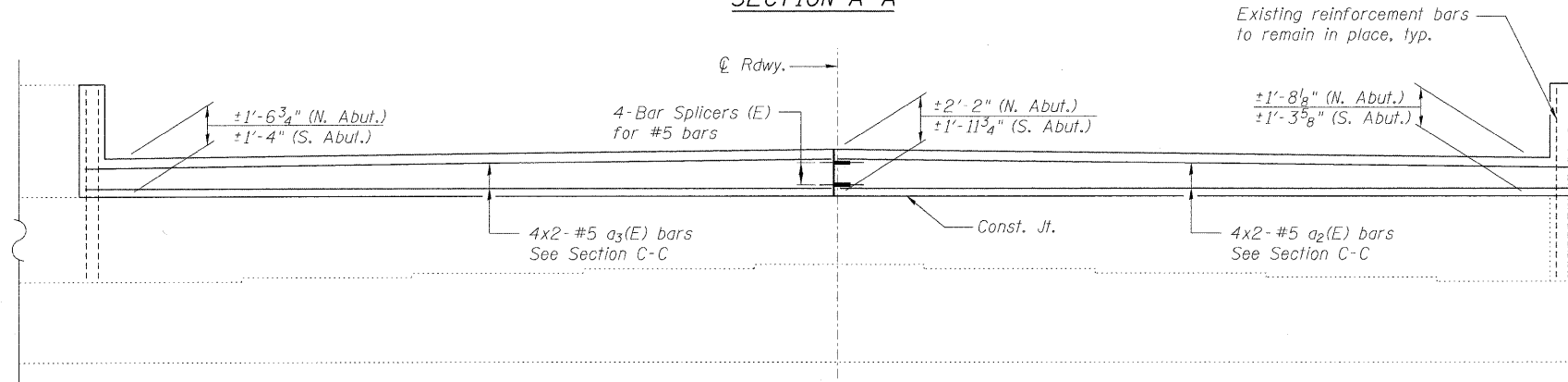


STATE OF ILLINOIS  
DEPARTMENT OF TRANSPORTATION

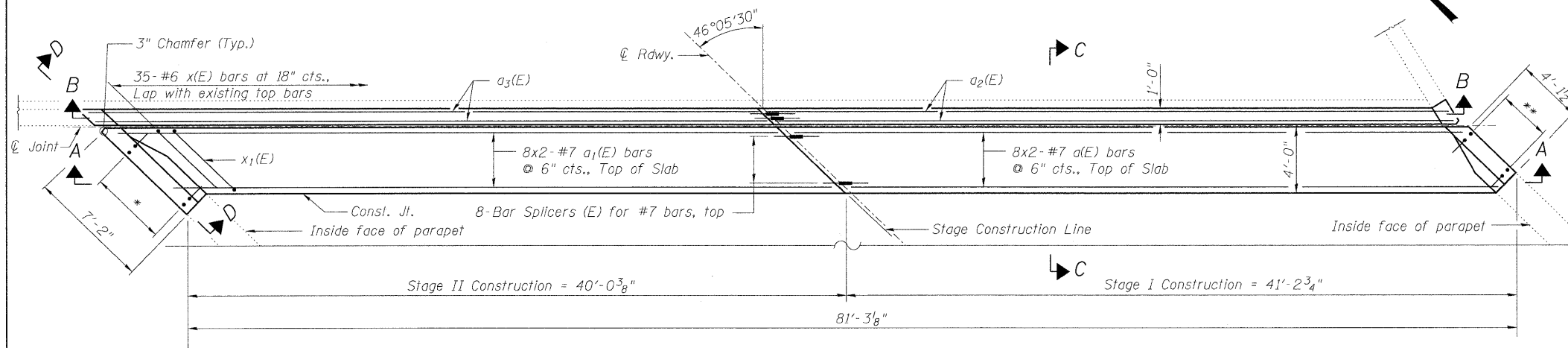


SECTION A-A



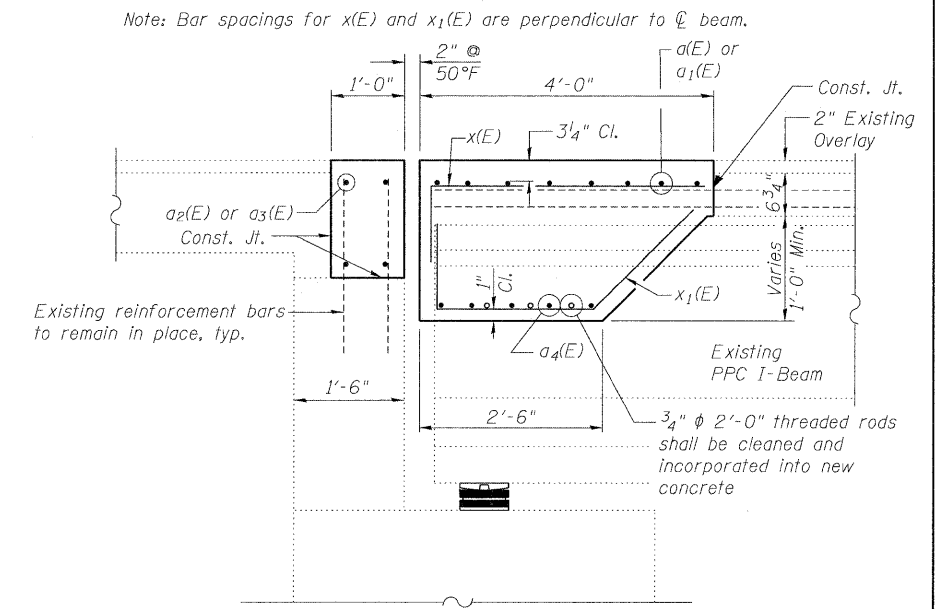
SECTION B-B

(North abutment shown, south abutment mirrored about  $\bar{C}$  Rdwy.)

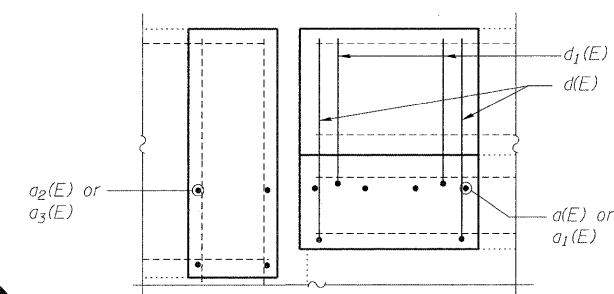


PLAN

(North abutment shown, south abutment mirrored about  $\bar{C}$  Rdwy.)



SECTION C-C

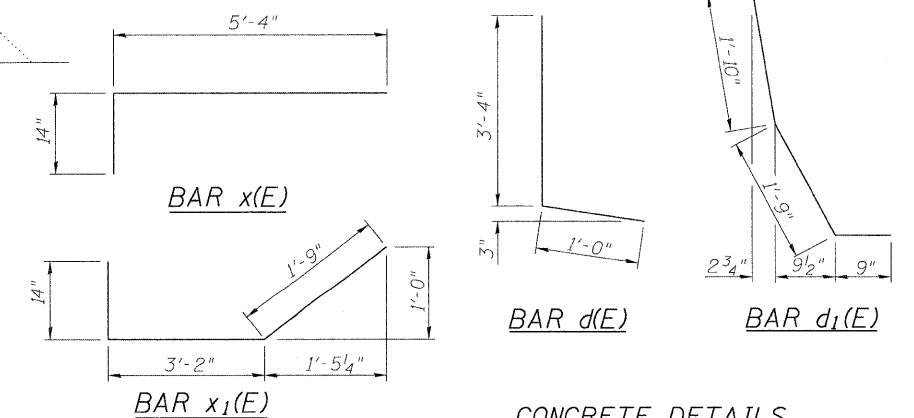


SECTION D-D

BILL OF MATERIAL

Bar	No.	Size	Length	Shape
a(E)	32	#7	23'-1"	—
a1(E)	32	#7	22'-6"	—
a2(E)	16	#5	22'-3"	—
a3(E)	16	#5	21'-8"	—
a4(E)	80	#7	8'-8"	—
d(E)	24	#5	4'-4"	L
d1(E)	24	#5	4'-4"	L
x(E)	70	#6	6'-6"	┌
x1(E)	96	#5	6'-1"	┌
Reinforcement Bars, Epoxy Coated			Pound	6650
Concrete Superstructure			Cu. Yd.	51.1

Bars indicated thus 8x2-#7 etc. indicates 8 lines of bars with 2 lengths per line.



CONCRETE DETAILS  
STRUCTURE NO. 016-0973

\* 7- #5 d(E) at 12" cts., 7- #5 d1(E) at 12" cts.  
\*\* 5- #5 d(E) at 12" cts., 5- #5 d1(E) at 12" cts.

Note:  
Bend d(E) and d1(E) bars in field as required.

MINIMUM BAR LAP

#5 bar = 2'-7"  
#7 bar = 4'-2"

<p>LIN ENGINEERING, LTD. Consulting Engineers Channah, Illinois</p>	SHEET NO. 6	F.A.I. RTE.	SECTION	COUNTY	TOTAL SHEETS	SHEET NO.
	11 SHEETS	290	(531-3.1,0305-302K)RS-5	COOK	314	143
Designed By: ESH Checked By: MTH Date: 12/2009		Drawn By: TBP File: 016-0973.dgn		CONTRACT NO. 60138		
FED. ROAD DIST. NO. _ ILLINOIS FED. AID PROJECT						