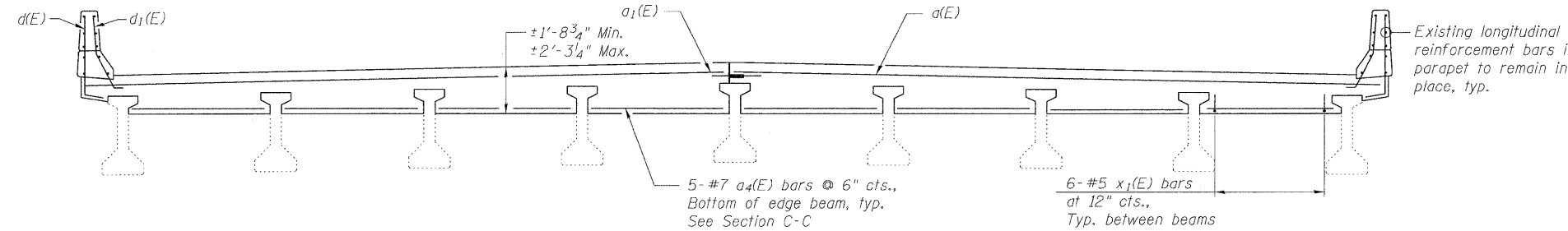
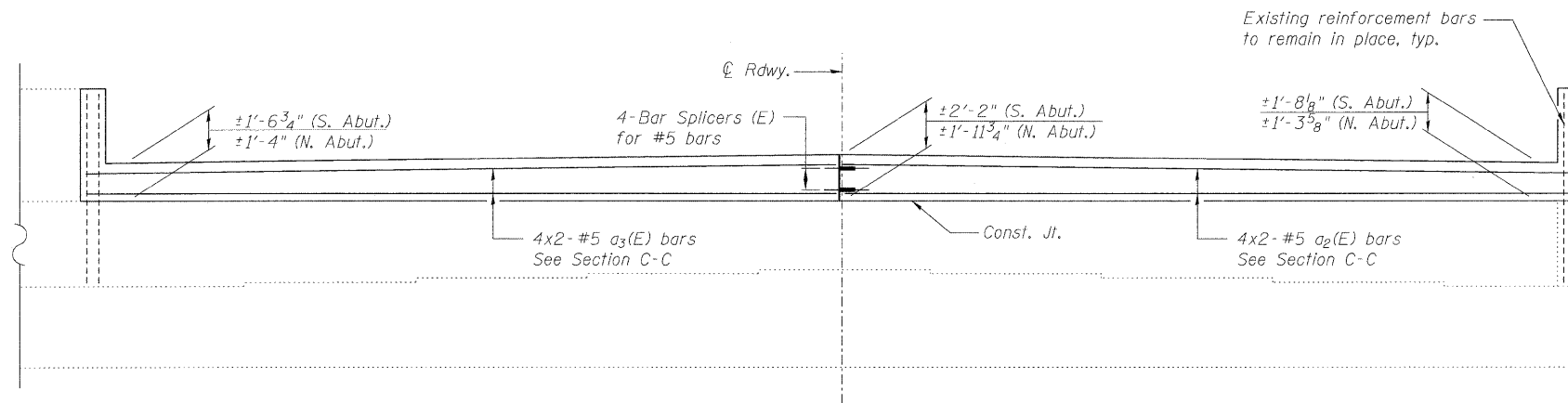


STATE OF ILLINOIS
DEPARTMENT OF TRANSPORTATION

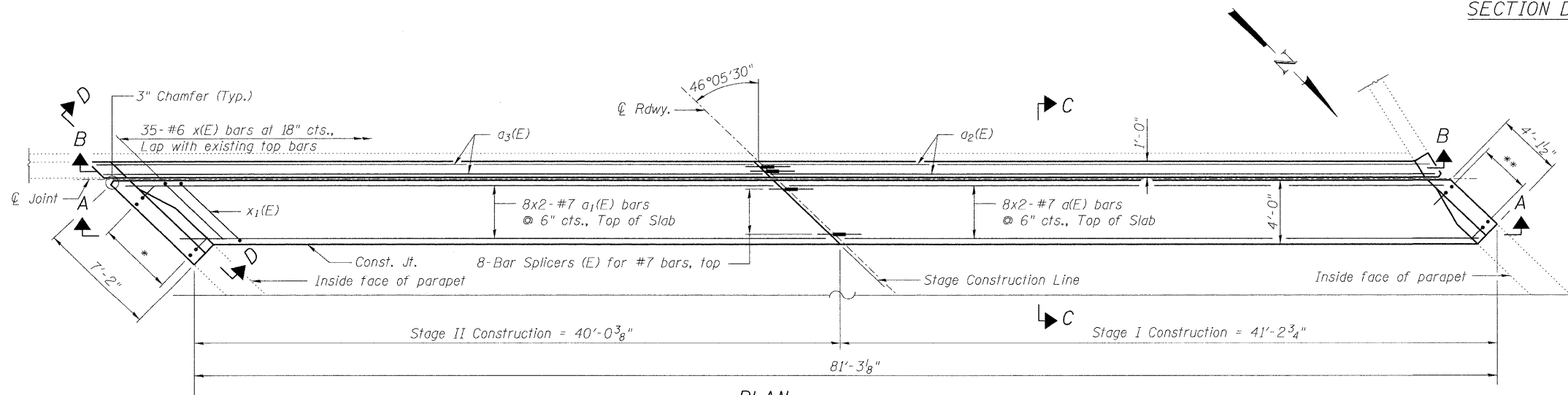


SECTION A-A



SECTION B-B

(South abutment shown, north abutment mirrored about \bar{C} Rdwy.)



PLAN

(South abutment shown, north abutment mirrored about \bar{C} Rdwy.)

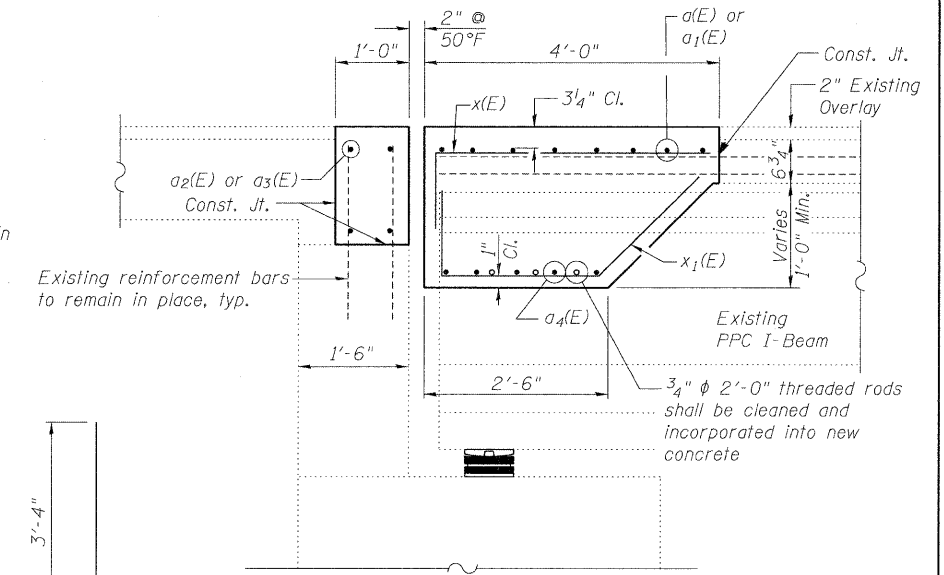
* 7-#5 d(E) at 12" cts., 7-#5 d1(E) at 12" cts.
** 5-#5 d(E) at 12" cts., 5-#5 d1(E) at 12" cts.

Note:
Bend d(E) and d1(E) bars in field as required.

MINIMUM BAR LAP

#5 bar = 2'-7"
#7 bar = 4'-2"

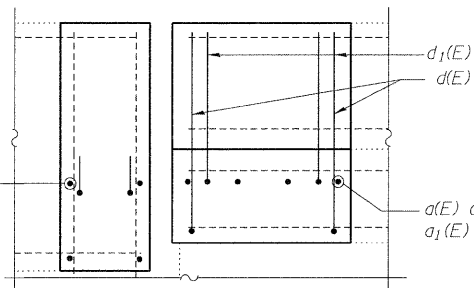
Note: Bar spacings for x(E) and x1(E) are perpendicular to \bar{C} beam.



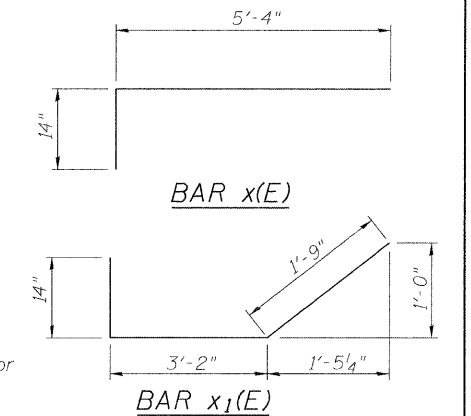
SECTION C-C



BAR d(E)



SECTION D-D



BAR x(E)

BAR x1(E)

BILL OF MATERIAL

Bar	No.	Size	Length	Shape
a(E)	32	#7	23'-1"	—
a1(E)	32	#7	22'-6"	—
a2(E)	16	#5	22'-3"	—
a3(E)	16	#5	21'-8"	—
a4(E)	80	#7	8'-8"	—
d(E)	24	#5	4'-4"	L
d1(E)	24	#5	4'-4"	L
x(E)	70	#6	6'-6"	┘
x1(E)	96	#5	6'-1"	┘
Reinforcement Bars, Epoxy Coated		Pound	6650	
Concrete Superstructure		Cu. Yd.	51.1	

Bars indicated thus 8x2-#7 etc. indicates 8 lines of bars with 2 lengths per line.

CONCRETE DETAILS
STRUCTURE NO. 016-0371

<p>LIN ENGINEERING, LTD. Consulting Engineers Chatham, Illinois</p>	SHEET NO. 6	F.A.I. RTE.	SECTION	COUNTY	TOTAL SHEETS	SHEET NO.
	11 SHEETS	290	(531-3.1,0305-302K)RS-5	COOK	34	154
Designed By: ESH Checked By: MTH Drawn By: TBP Date: 12/29/29 File: 016-0371.dgn		CONTRACT NO. 60138 FED. ROAD DIST. NO. ILLINOIS FED. AID PROJECT				