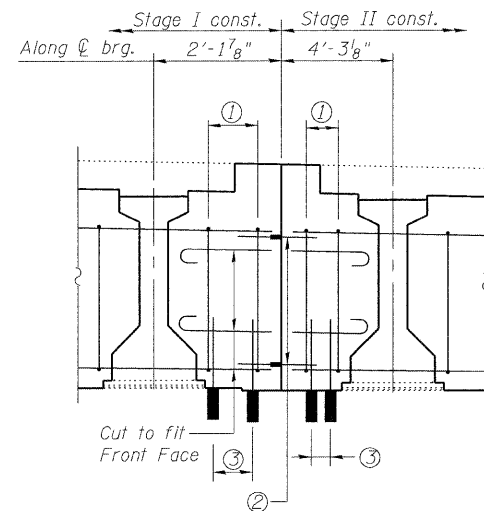


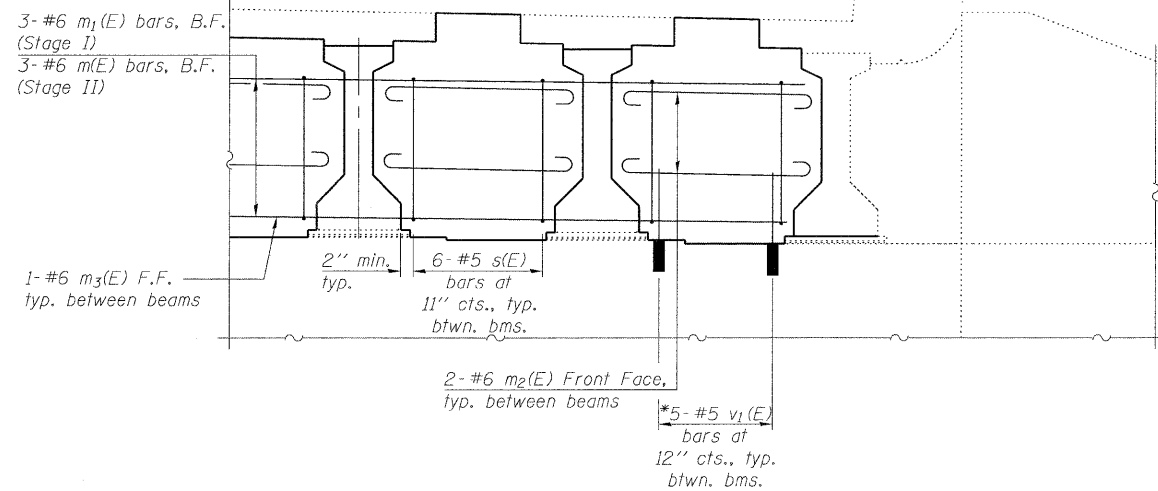
STATE OF ILLINOIS  
DEPARTMENT OF TRANSPORTATION



**DIAPHRAGM ELEVATION NEAR STAGE LINE**

(NB South abutment shown, looking south, north abutment similar)

- ① 2-#5 s(E) bars Stage I, 4-#5 s(E) bars Stage II
- ② 6 Bar Splicers (E) for #6 bars
- ③ 2-#5 v<sub>1</sub>(E) bars Stage I, 4-#5 v<sub>1</sub>(E) bars Stage II



**DIAPHRAGM ELEVATION AT ABUTMENT**

\*v<sub>1</sub>(E) bars to be epoxy grouted in accordance with Article 584 of the Standard Specs.

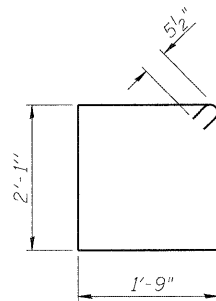
**BILL OF MATERIAL**

(2 Abutments)

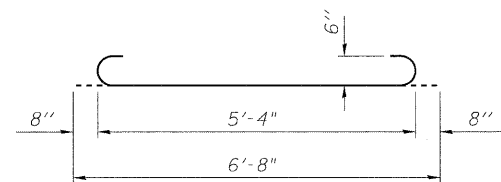
Bar	No.	Size	Length	Shape
a(E)	16	#6	30'-0"	—
a <sub>1</sub> (E)	16	#6	29'-6"	—
m(E)	12	#6	29'-5"	—
m <sub>1</sub> (E)	12	#6	27'-3"	—
m <sub>2</sub> (E)	72	#6	6'-8"	U
m <sub>3</sub> (E)	36	#6	4'-6"	—
s(E)	216	#5	8'-7"	□
u(E)	144	#5	5'-4"	∟
v <sub>1</sub> (E)	184	#5	2'-11"	—
Reinforcement Bars, Epoxy Coated			Pound	6720
Concrete Superstructure			Cu. Yd.	54.4

Notes:

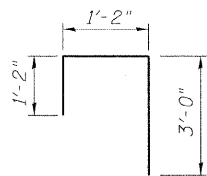
Concrete in diaphragm is included with Concrete Superstructure.  
The s(E) bars shall be placed parallel to the beams.  
Spacing for these bars shall be at right angles to the beams.  
Drill and epoxy grout v<sub>1</sub>(E) bars a minimum of 9" into existing concrete.  
Cost included with Reinforcement Bars, Epoxy Coated.



**BAR s(E)**



**BAR m<sub>2</sub>(E)**



**BAR u(E)**

**ABUTMENT MODIFICATIONS - 2**

**STRUCTURE NO. 016-0372**

<p>LIN ENGINEERING LTD. Consulting Engineers Chatham, Illinois</p>	SHEET NO. 8	F.A.I. RTE.	SECTION	COUNTY	TOTAL SHEETS	SHEET NO.	
	9 SHEETS	290	(531-3.1,0305-302K)RS-5	COOK	314	107	
		CONTRACT NO. 60I38					
		FED. ROAD DIST. NO. ILLINOIS FED. AID PROJECT					

Designed By: ADB  
Checked By: MTH  
Date: 12/2009

Drawn By: ADB  
File: 016-0372.dgn