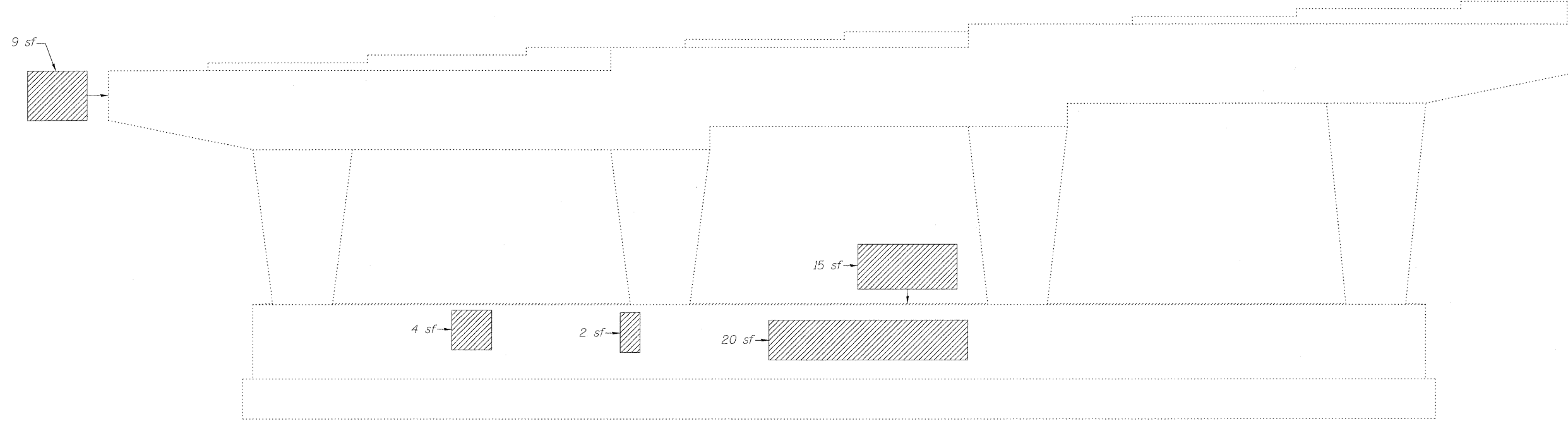
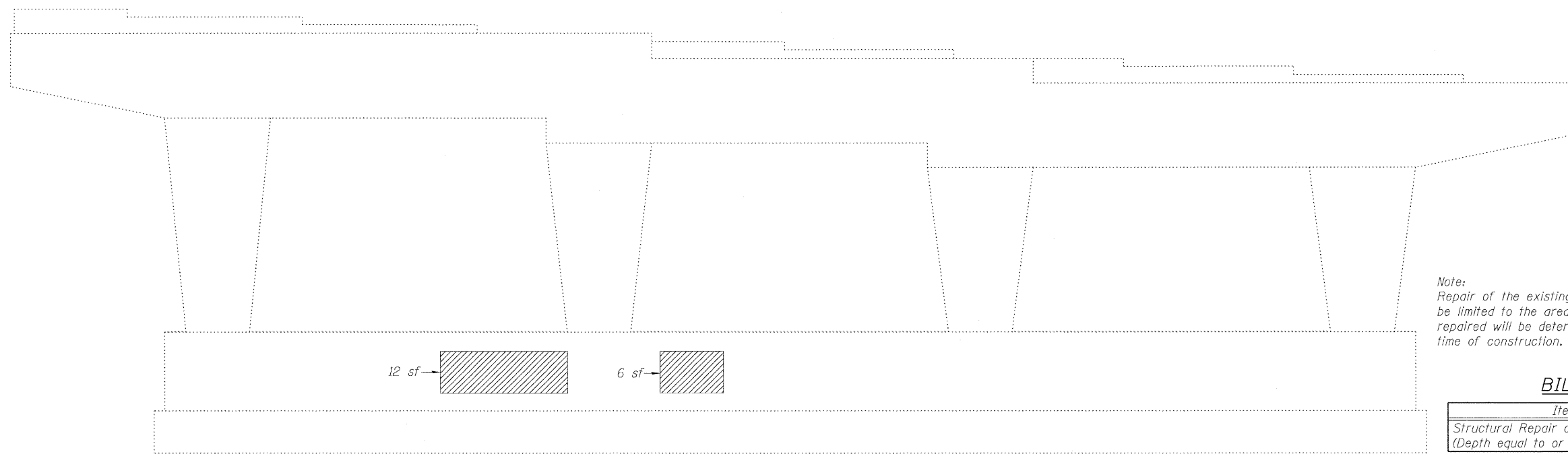


STATE OF ILLINOIS  
DEPARTMENT OF TRANSPORTATION



PIER 2  
(Looking North)



PIER 2  
(Looking South)

Note:  
Repair of the existing pier shall include but may not be limited to the areas shown. The actual areas to be repaired will be determined by the Engineer at the time of construction.

BILL OF MATERIAL

Item	Unit	Total
Structural Repair of Concrete (Depth equal to or less than 5 in.)	Sq. Ft.	78

LEGEND

Structural Repair of Concrete (Depth equal to or less than 5")

sf Square Feet

PIER 2 REPAIR  
STRUCTURE NO. 016-0373

<b>LIN ENGINEERING, LTD.</b> Consulting Engineers Chatham, Illinois	SHEET NO. 5	F.A.I. RTE.	SECTION	COUNTY	TOTAL SHEETS	SHEET NO.
	7 SHEETS	290	(531-3.1,0305-302K)RS-5	COOK	314	173
Designed By: KHH Date: 12/2009		Checked By: MTH File: 016-0373.dgn		FED. ROAD DIST. NO. _ ILLINOIS		FED. AID PROJECT
					CONTRACT NO. 60138	