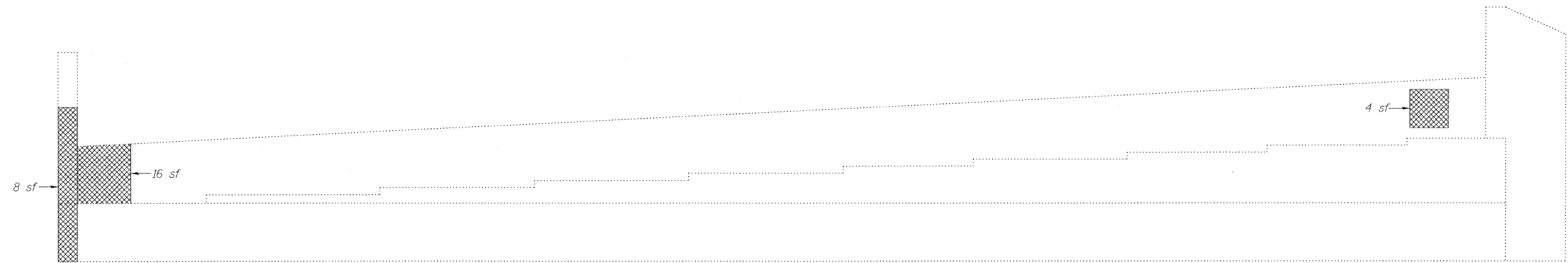
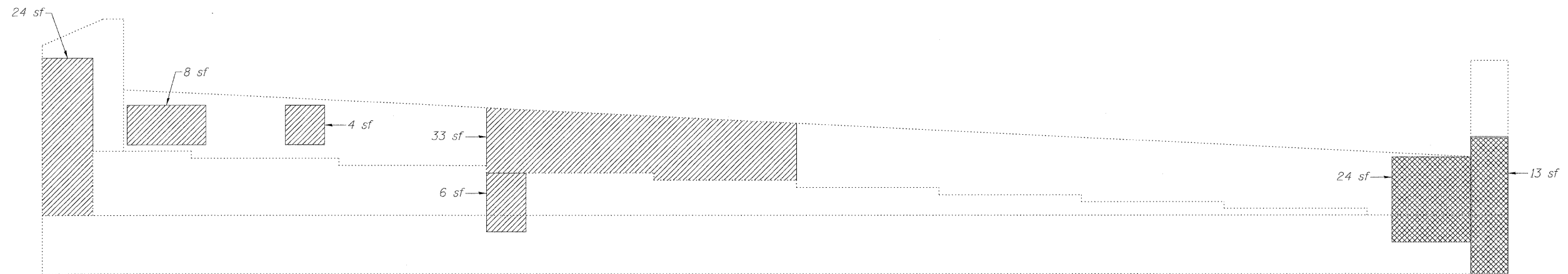


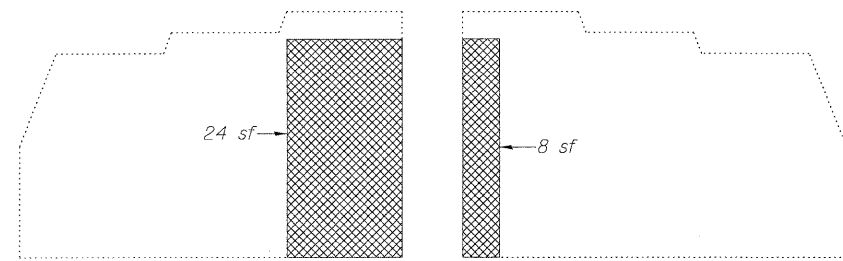
STATE OF ILLINOIS
DEPARTMENT OF TRANSPORTATION



NORTH ABUTMENT
(Looking North)



SOUTH ABUTMENT
(Looking South)



NORTHWEST WINGWALL

SOUTHWEST WINGWALL

LEGEND

- Structural Repair of Concrete (Depth greater than 5")
- Structural Repair of Concrete (Depth equal to or less than 5")
- sf Square Feet

Note:
Repair of the existing abutments shall include but may not be limited to the areas shown. The actual areas to be repaired will be determined by the Engineer at the time of construction.

BILL OF MATERIAL

Item	Unit	Total
Structural Repair of Concrete (Depth greater than 5 in.)	Sq. Ft.	112
Structural Repair of Concrete (Depth equal to or less than 5 in.)	Sq. Ft.	86

ABUTMENT REPAIR
STRUCTURE NO. 016-0970

LIN ENGINEERING, LTD. Consulting Engineers Chatham, Illinois	SHEET NO. 4	F.A.I. RTE.	SECTION	COUNTY	TOTAL SHEETS	SHEET NO.
	8 SHEETS	290	(531-3.1,0305-302K)RS-5	COOK	314	174
		FED. ROAD DIST. NO. _		ILLINOIS		FED. AID PROJECT
				CONTRACT NO. 60138		