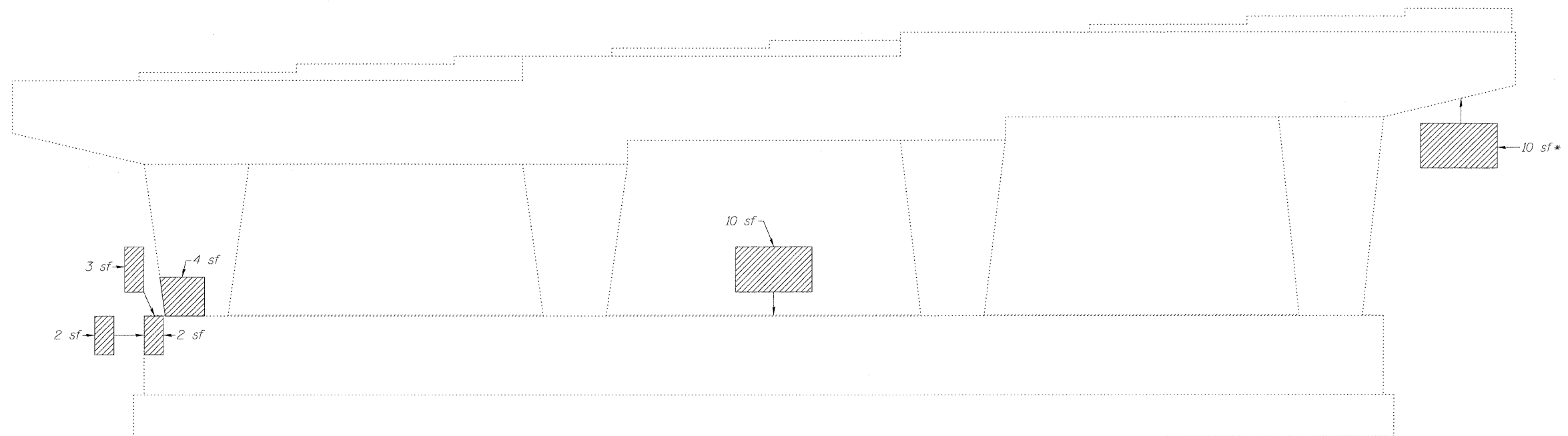
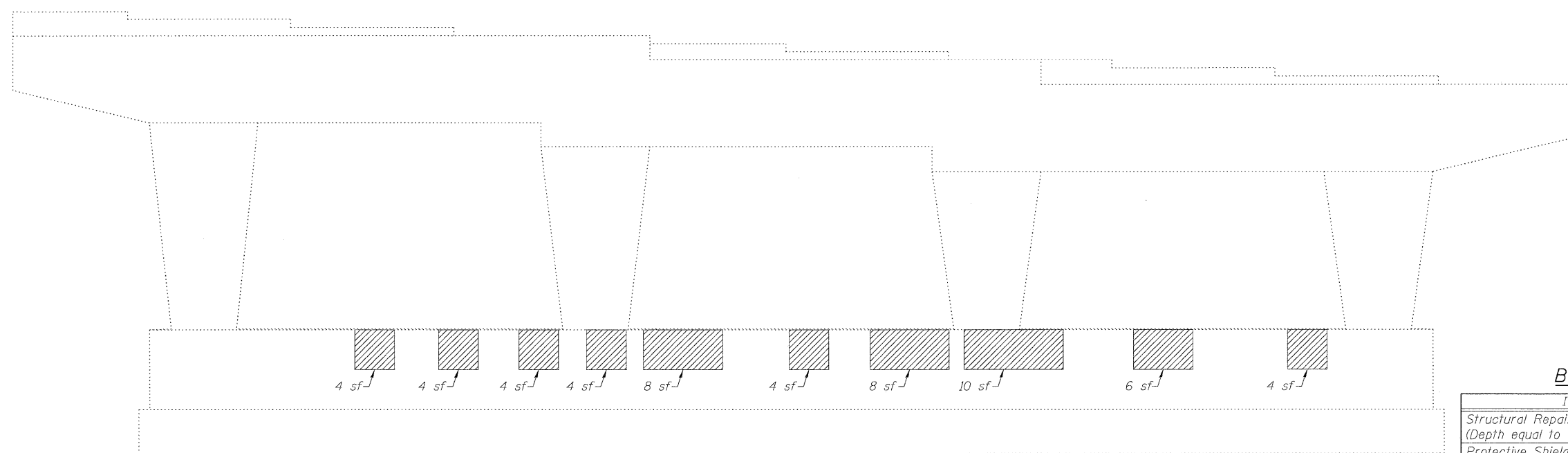


STATE OF ILLINOIS
DEPARTMENT OF TRANSPORTATION



PIER 2
(Looking North)

*Requires Protective Shield

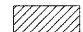


PIER 2
(Looking South)

BILL OF MATERIAL

Item	Unit	Total
Structural Repair of Concrete (Depth equal to or less than 5 in.)	Sq. Ft.	100
Protective Shield	Sq. Yd.	2

LEGEND

 Structural Repair of Concrete (Depth equal to or less than 5")
sf Square Feet

Note:
Repair of the existing pier shall include but may not be limited to the areas shown. The actual areas to be repaired will be determined by the Engineer at the time of construction.

LIN ENGINEERING, LTD.
Consulting Engineers
Chatham, Illinois

Designed By: KHH | Checked By: MTH | Drawn By: KHH
Date: 12/2009 | File: 016-0970.dgn

SHEET NO. 6
8 SHEETS

F.A.I. RTE.	SECTION	COUNTY	TOTAL SHEETS	SHEET NO.
290	(531-3.1,0305-302K)RS-5	COOK	314	181
FED. ROAD DIST. NO. _ ILLINOIS FED. AID PROJECT			CONTRACT NO. 60138	

PIER 2 REPAIR
STRUCTURE NO. 016-0970