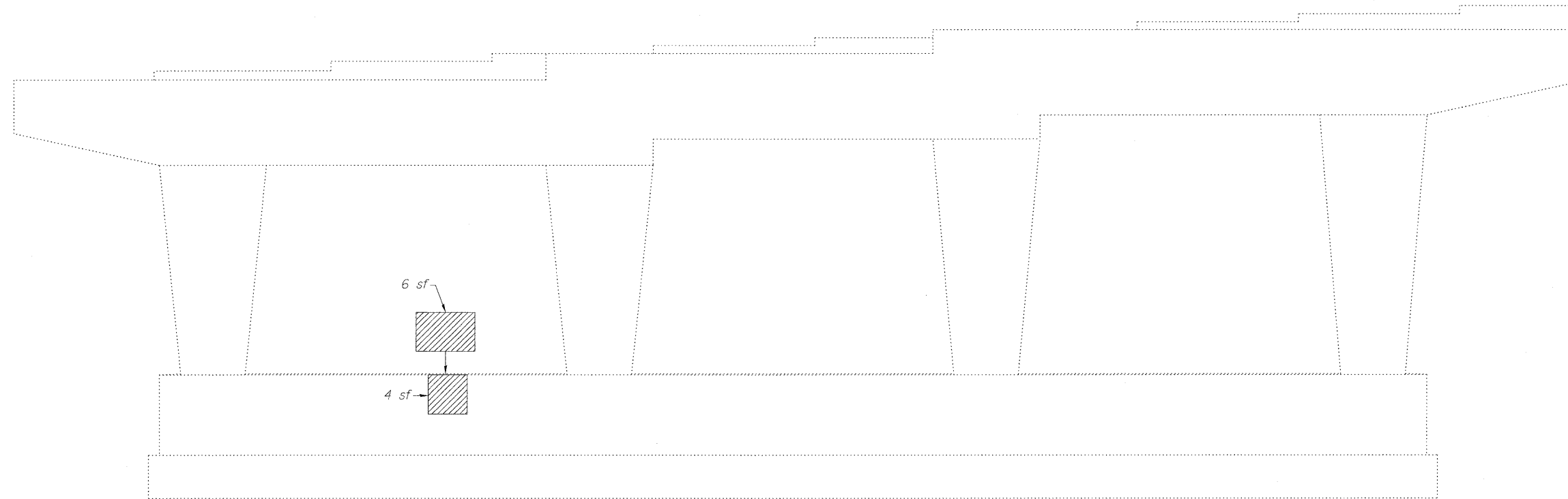
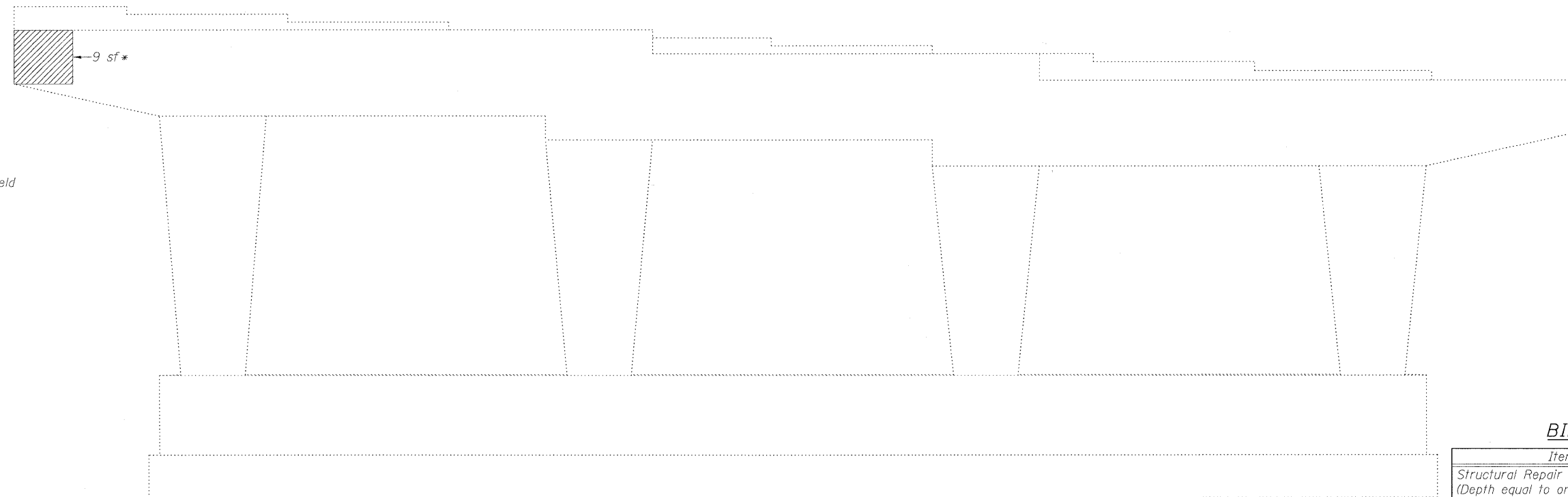


STATE OF ILLINOIS  
DEPARTMENT OF TRANSPORTATION



PIER 3  
(Looking North)




\*Requires Protective Shield

BILL OF MATERIAL

| Item   | Unit    | Total |
|--|---------|-------|
| Structural Repair of Concrete<br>(Depth equal to or less than 5 in.) | Sq. Ft. | 22    |
| Protective Shield  | Sq. Yd. | 2     |

PIER 3 REPAIR  
STRUCTURE NO. 016-0970


LEGEND

 Structural Repair of Concrete (Depth equal to or less than 5")

sf Square Feet

Note:  
Repair of the existing pier shall include but may not be limited to the areas shown. The actual areas to be repaired will be determined by the Engineer at the time of construction.

PIER 3  
(Looking South)

|   |             |   |                        |        |                    |           |
|---|-------------|---|------------------------|--------|--------------------|-----------|
|  <b>LIN ENGINEERING, LTD.</b><br>Consulting Engineers<br>Chatham, Illinois | SHEET NO. 7 | F.A.I. RTE.                                     | SECTION                | COUNTY | TOTAL SHEETS       | SHEET NO. |
|   | 8 SHEETS    | 290   | (531-3.1,0305-302)RS-5 | COOK   | 314                | 182       |
| Designed By: KHH    Checked By: MTH    Drawn By: KHH<br>Date: 12/29/09    File: 016-0970.dgn  |             | FED. ROAD DIST. NO. _ ILLINOIS FED. AID PROJECT |                        |        |                    |           |
|   |             |   |                        |        | CONTRACT NO. 60138 |           |