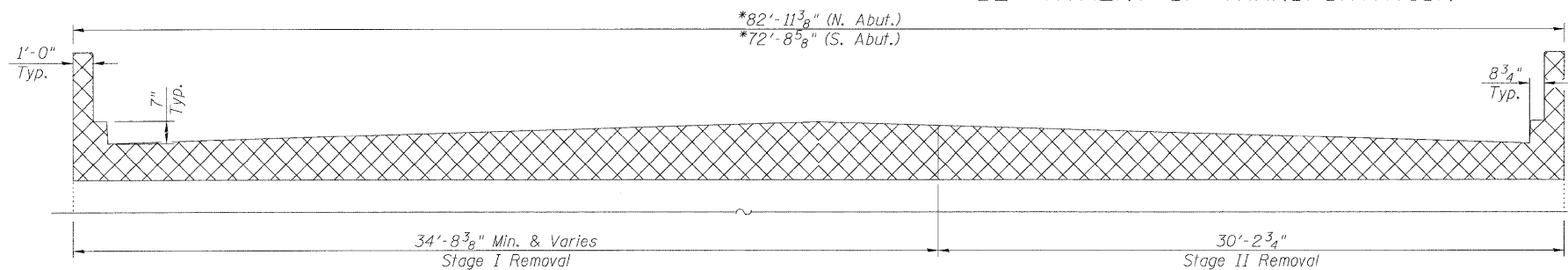
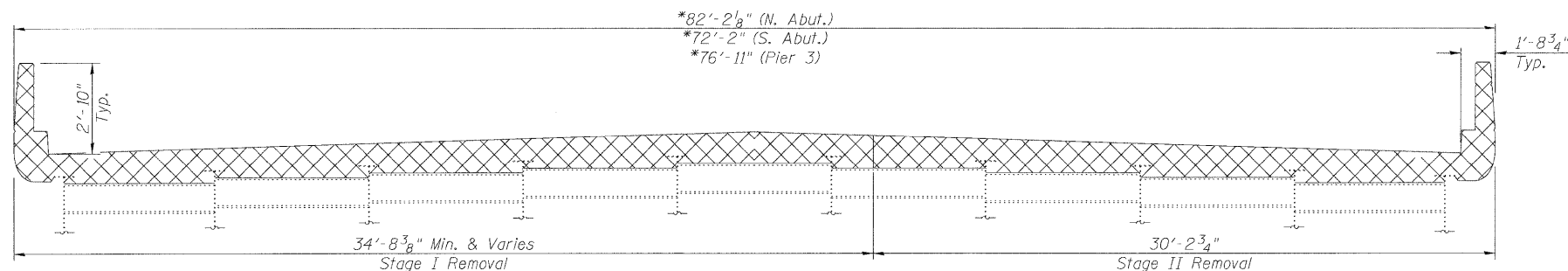


STATE OF ILLINOIS  
DEPARTMENT OF TRANSPORTATION



SECTION D-D

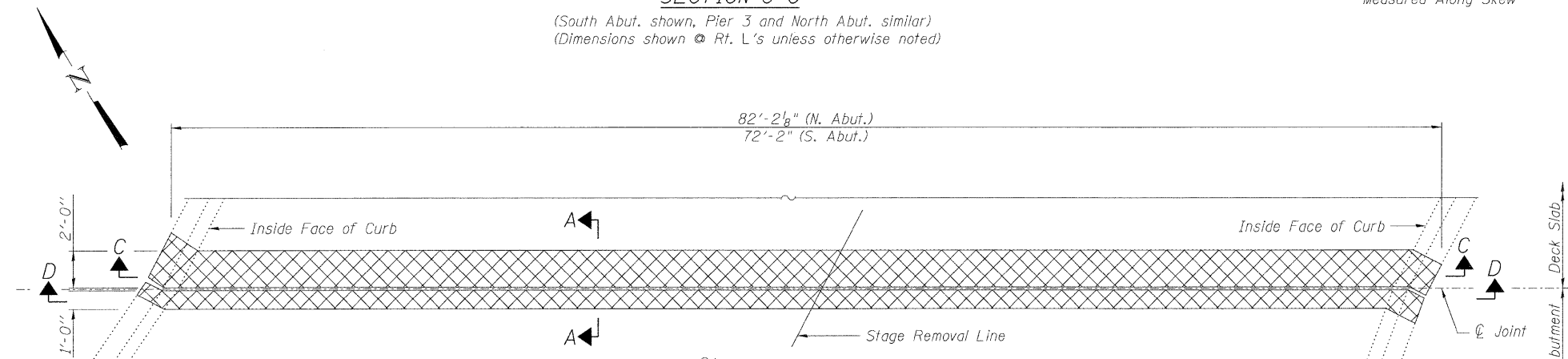
(South Abut. shown, North Abut. similar)  
(Dimensions shown @ Rt. L's unless otherwise noted)



SECTION C-C

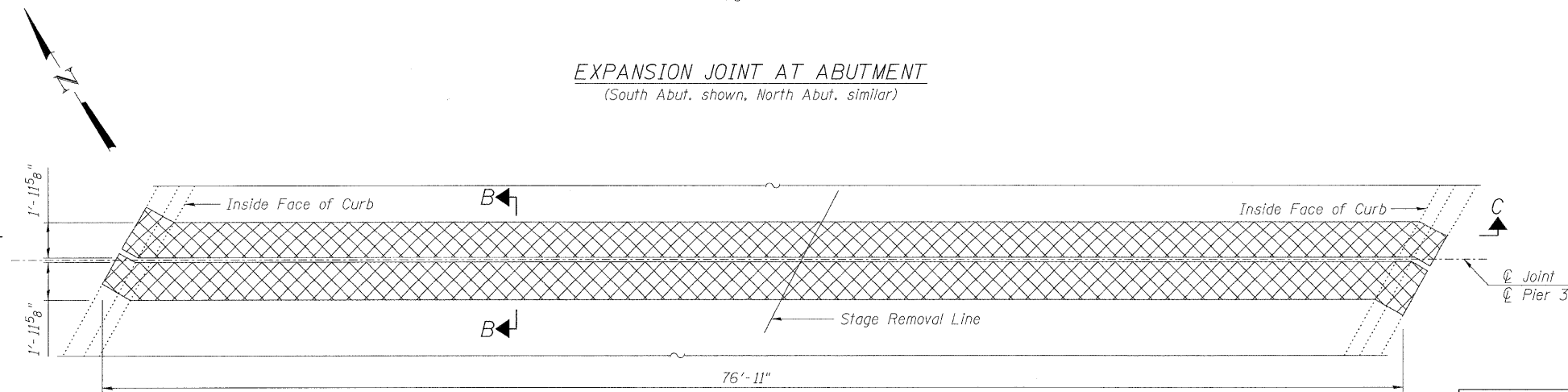
(South Abut. shown, Pier 3 and North Abut. similar)  
(Dimensions shown @ Rt. L's unless otherwise noted)

\*Measured Along Skew

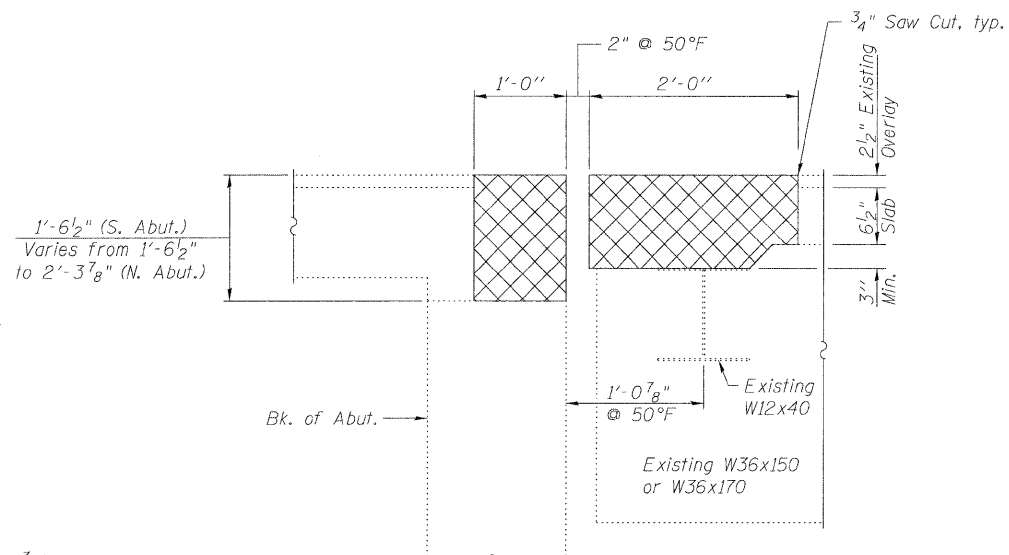


EXPANSION JOINT AT ABUTMENT

(South Abut. shown, North Abut. similar)

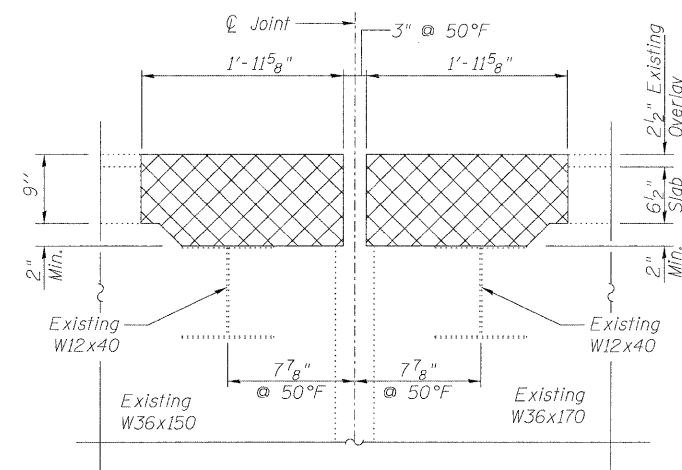


EXPANSION JOINT AT PIER 3



SECTION A-A

(Dimensions @ Rt. L's)



SECTION B-B

(Dimensions @ Rt. L's)

Notes:

1. Cross hatched area indicates concrete removal.
2. Existing reinforcement bars in the concrete removal area extending in new construction shall be cleaned and incorporated into the new construction. Cost included with Concrete Removal.
3. Any reinforcement bars that are damaged during concrete removal operations shall be repaired or replaced using an approved bar splicer or anchorage system, in accordance with IDOT Standard Specifications Article 501.03. Cost included in "Concrete Removal"
4. Overlay removal is included in pay item Concrete Removal.

BILL OF MATERIAL

Item	Unit	Total
Concrete Removal	Cu. Yd.	34.7

CONCRETE REMOVAL  
STRUCTURE NO. 016-1119

 LIN ENGINEERING, LTD. Consulting Engineers Chatham, Illinois	SHEET NO. 6	F.A.I. RTE. 290	SECTION (531-3.1,0305-302)RS-5	COUNTY COOK	TOTAL SHEETS 314	SHEET NO. 201
	12 SHEETS	FED. ROAD DIST. NO. _ ILLINOIS		CONTRACT NO. 60138		
Designed By: RRT Date: 12/2009	Checked By: MTH File: 016-1119.dgn	Drawn By: RRT	FED. AID PROJECT			