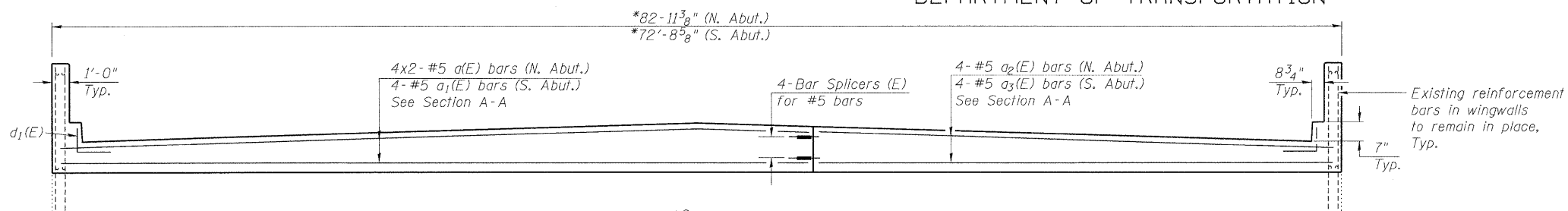


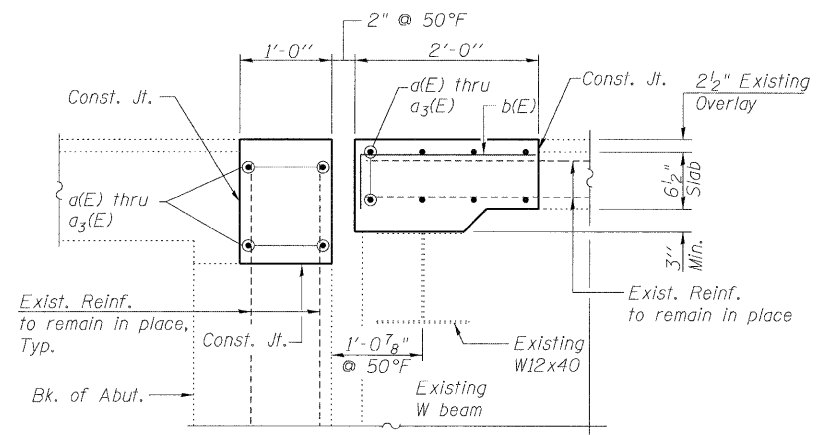
STATE OF ILLINOIS  
DEPARTMENT OF TRANSPORTATION



SECTION C-C

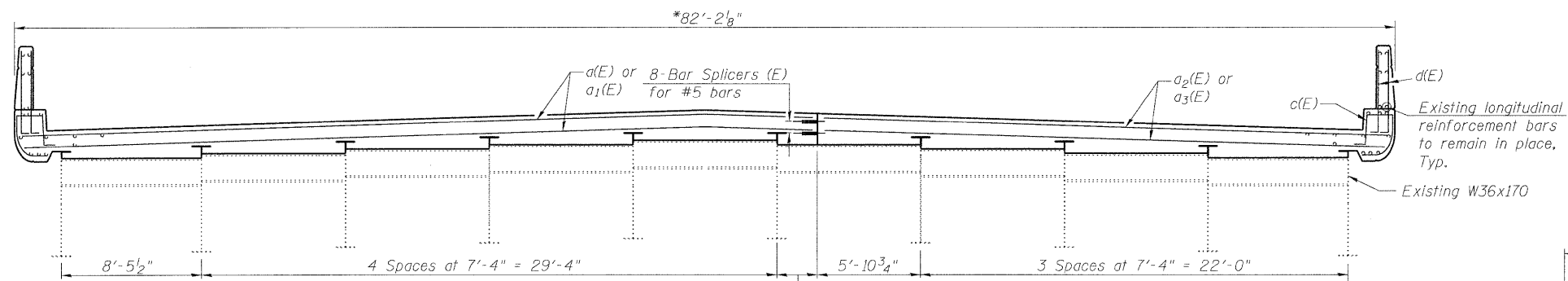
(Dimensions @ Rt. L's unless otherwise noted)  
(South Abut. shown, North Abut. similar)

\* Measured along skew



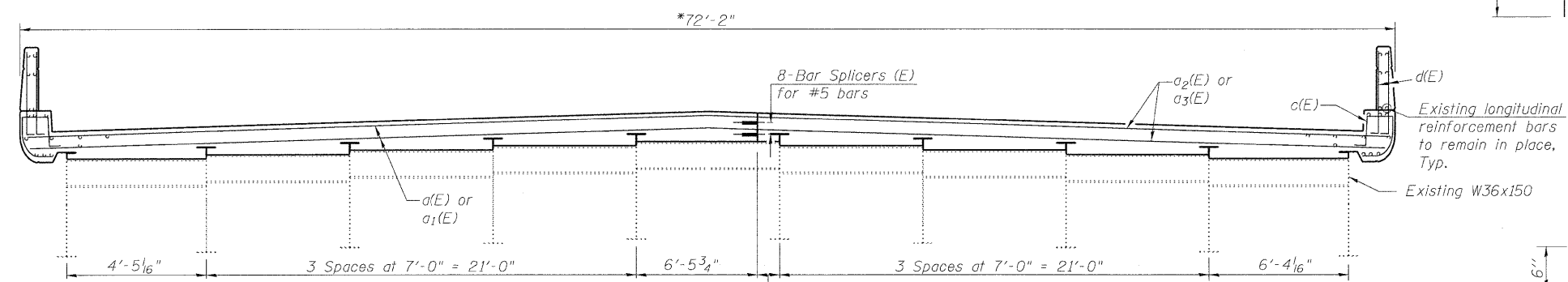
SECTION A-A

(Dimension @ Rt. L's)



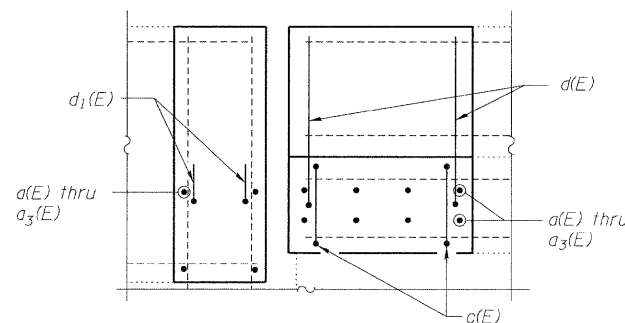
SECTION B-B (N. ABUT.)

(Dimensions @ Rt. L's unless otherwise noted)



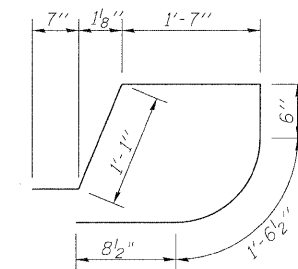
SECTION B-B (S. ABUT.)

(Dimensions @ Rt. L's unless otherwise noted)

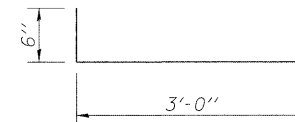


SECTION D-D

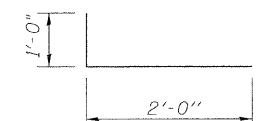
BAR b(E)



BAR c(E)



BAR d(E)



BAR d1(E)

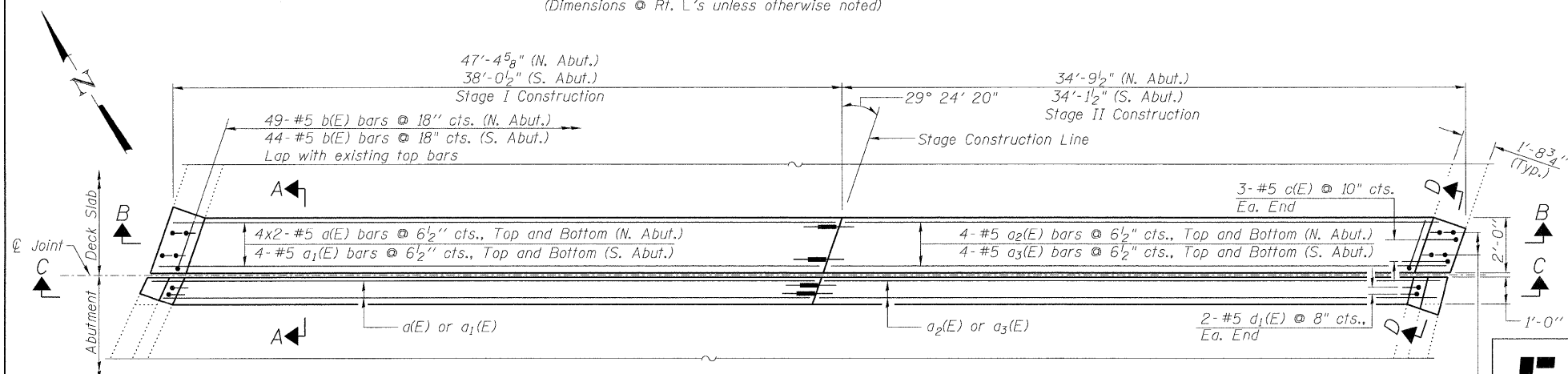
BILL OF MATERIAL

(Both Abutments)

Bar	No.	Size	Length	Shape
a(E)	24	#5	25'-1"	—
a1(E)	12	#5	38'-1"	—
a2(E)	12	#5	35'-1"	—
a3(E)	12	#5	34'-3"	—
b(E)	93	#5	2'-6"	┌
c(E)	12	#5	6'-0"	└
d(E)	24	#5	3'-6"	┌
d1(E)	8	#5	3'-0"	┌
Reinforcement Bars, Epoxy Coated		Pound	2410	
Concrete Superstructure		Cu. Yd.	22.4	

MINIMUM BAR LAP

#5 bar = 2'-7"



EXPANSION JOINT AT ABUTMENT

(South Abut. Shown, North Abut. Similar)

**Lin Engineering, Ltd.**  
Consulting Engineers  
Chatham, Illinois

SHEET NO. 7

12 SHEETS

F.A.I. RTE.	SECTION	COUNTY	TOTAL SHEETS	SHEET NO.
290	(531-3.1,0305-302)RS-5	COOK	314	202
CONTRACT NO. 60138				
FED. ROAD DIST. NO. ILLINOIS FED. AID PROJECT				

Designed By: RH  
Checked By: MTH  
Date: 12/2009  
File: 016-1119.dwg  
Drawn By: RH