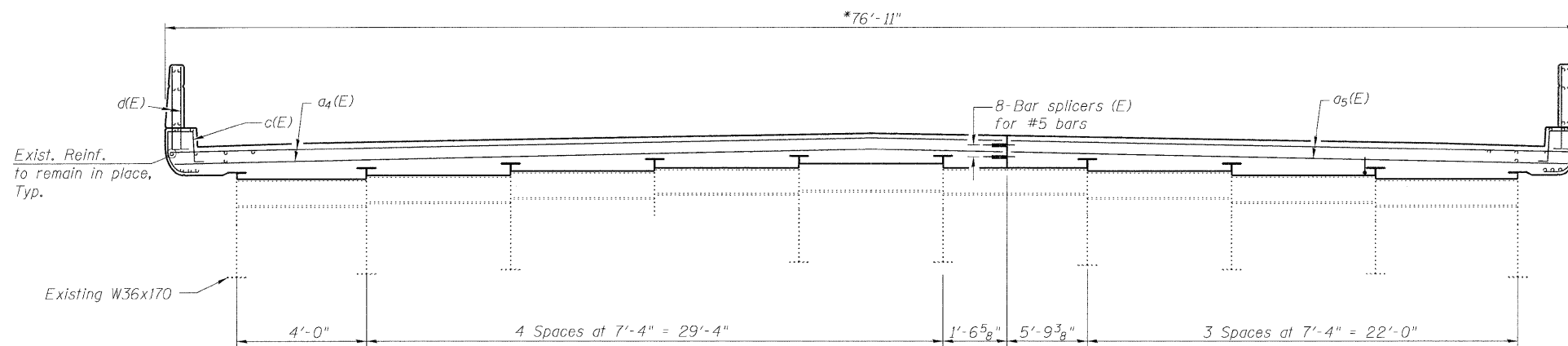


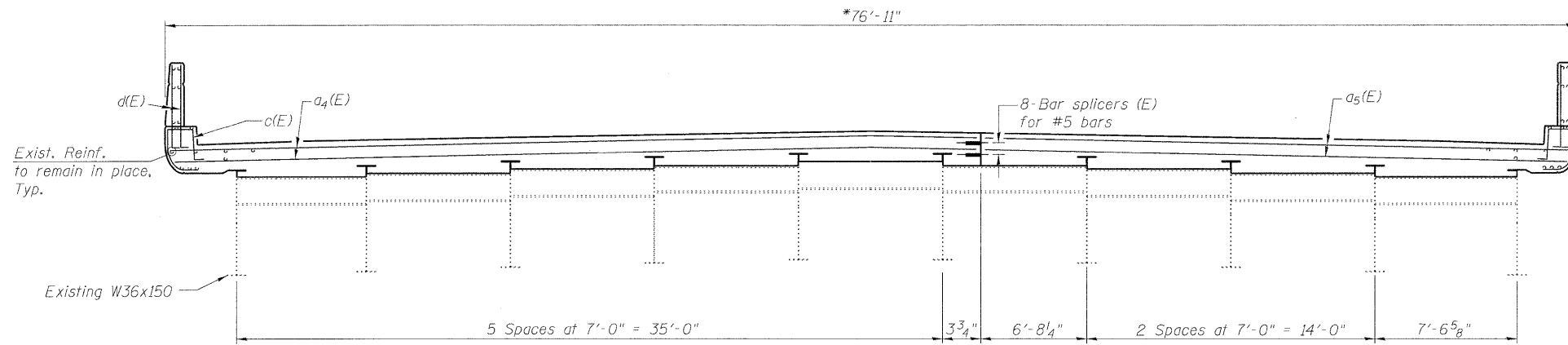
STATE OF ILLINOIS
DEPARTMENT OF TRANSPORTATION



SECTION B-B

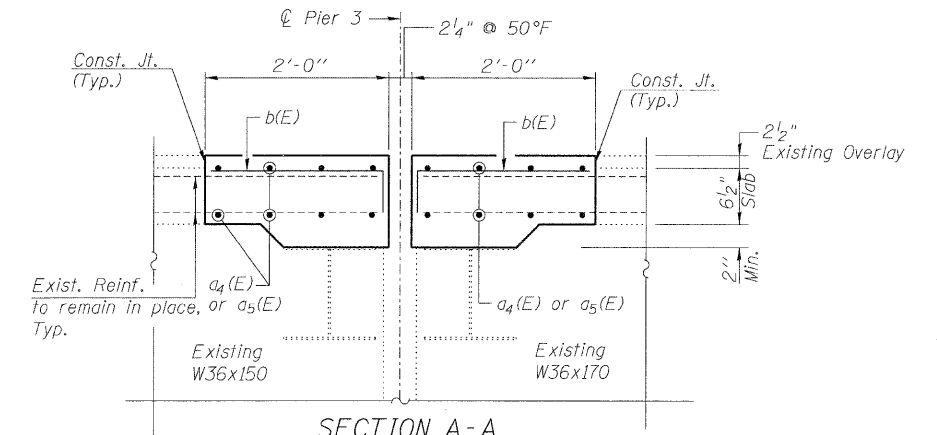
(Dimension @ Rt. L's unless otherwise noted)

* Measured along skew

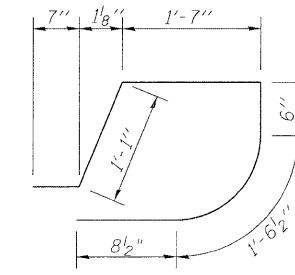


SECTION C-C

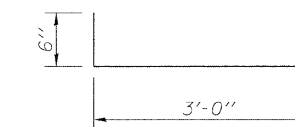
(Dimension @ Rt. L's unless otherwise noted)



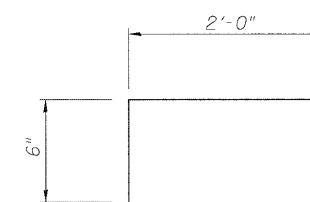
SECTION A-A
(Dimension @ Rt. L's)



BAR c(E)



BAR d(E)

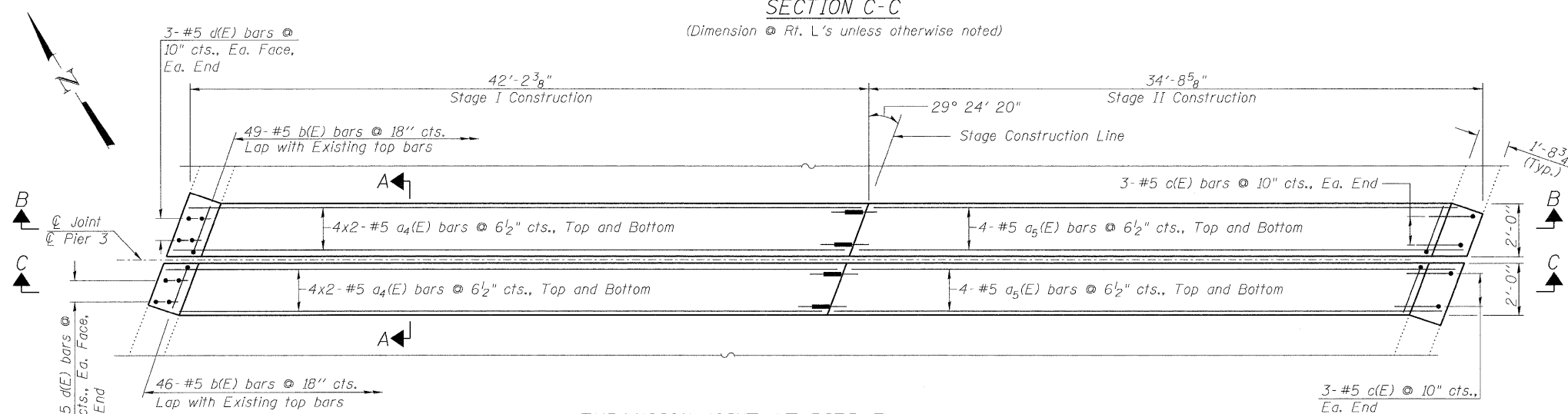


BAR b(E)

BILL OF MATERIAL

(Pier 3)

Bar	No.	Size	Length	Shape
a4(E)	32	#5	22'-5"	—
a5(E)	16	#5	34'-11"	—
b(E)	95	#5	2'-6"	┌
c(E)	12	#5	6'-0"	J
d(E)	24	#5	3'-6"	L
Reinforcement Bars, Epoxy Coated		Pound	1700	
Concrete Superstructure		Cu. Yds.	12.3	



EXPANSION JOINT AT PIER 3

MINIMUM BAR LAP

#5 bar = 2'-7"

PIER 3 CONCRETE DETAILS
STRUCTURE NO. 016-1119

<p>LIN ENGINEERING, LTD. Consulting Engineers Chatham, Illinois</p>	SHEET NO. 8	F.A.I. R.T.E. 290	SECTION (531-3.1,0305-302K)RS-5	COUNTY COOK	TOTAL SHEETS 314	SHEET NO. 203
	12 SHEETS	FED. ROAD DIST. NO. ILLINOIS		CONTRACT NO. 60I38		