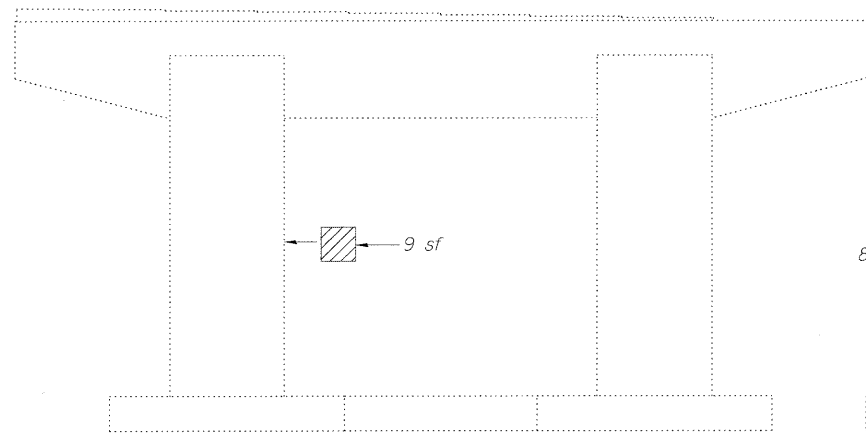
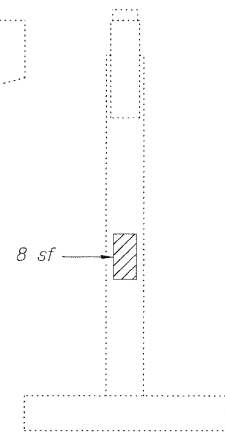


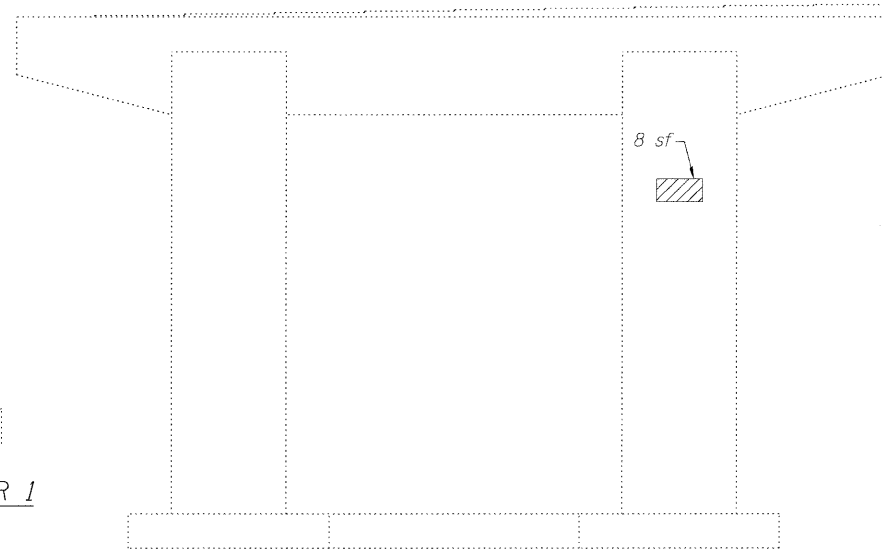
STATE OF ILLINOIS
DEPARTMENT OF TRANSPORTATION



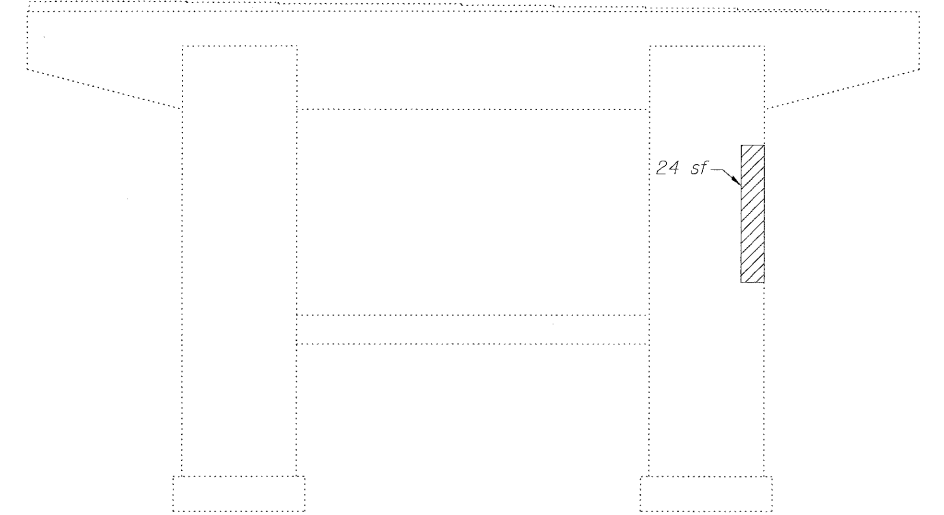
PIER 1
(Looking North)



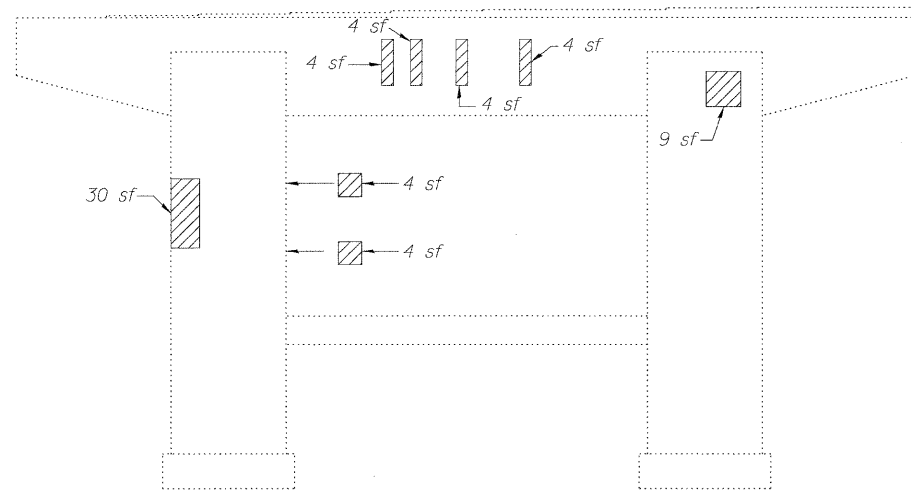
END VIEW - PIER 1
(Looking West)



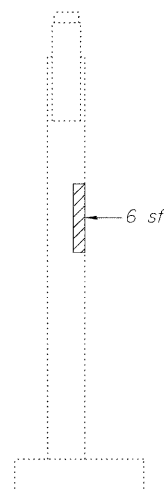
PIER 2
(Looking South)



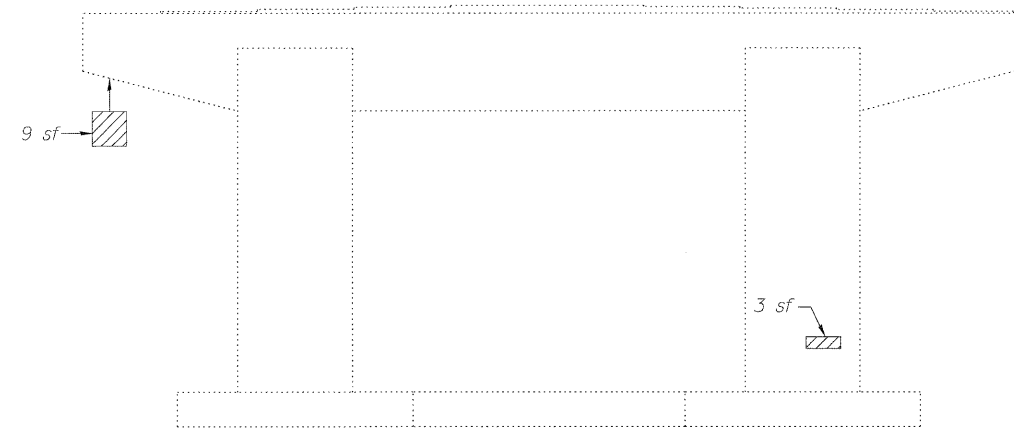
PIER 3
(Looking North)



PIER 4
(Looking South)



END VIEW - PIER 4
(Looking West)




PIER 6
(Looking South)


BILL OF MATERIAL

Item	Unit	Total
Structural Repair of Concrete (Depth equal to or less than 5 in.)	Sq. Ft.	150

LEGEND

 Structural Repair of Concrete
(Depth equal to or less than 5")
sf Square Feet

PIER REPAIR
STRUCTURE NO. 016-1119

 LIN ENGINEERING, LTD. Consulting Engineers Chatham, Illinois	SHEET NO. 10	F.A.I. RTE.	SECTION	COUNTY	TOTAL SHEETS	SHEET NO.
	12 SHEETS	290	(531-3.1,0305-302K)RS-5	COOK	314	205
Designed By: RH Date: 12/2009		Checked By: MTH File: 016-1119.dwg		Drawn By: RH		CONTRACT NO. 60138
FED. ROAD DIST. NO. _ ILLINOIS FED. AID PROJECT						