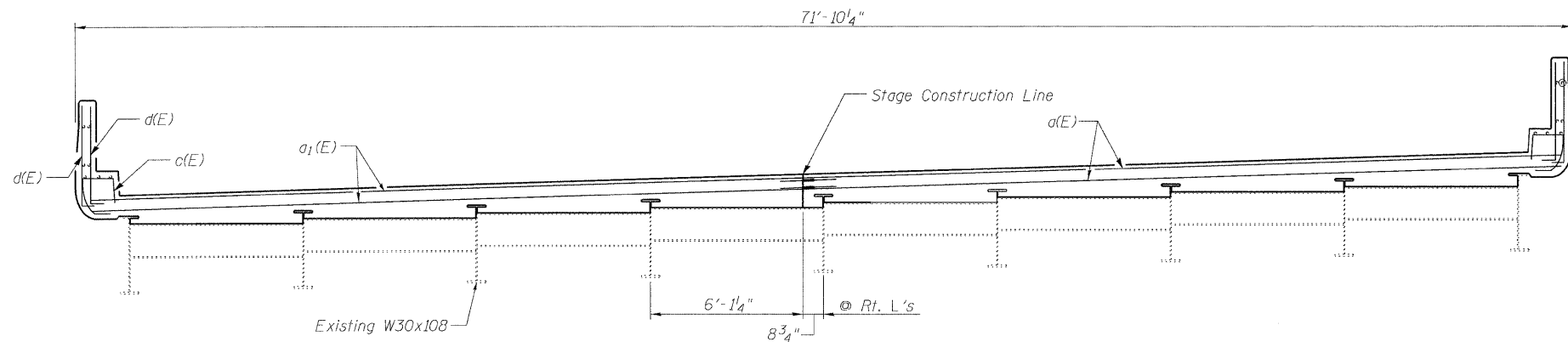


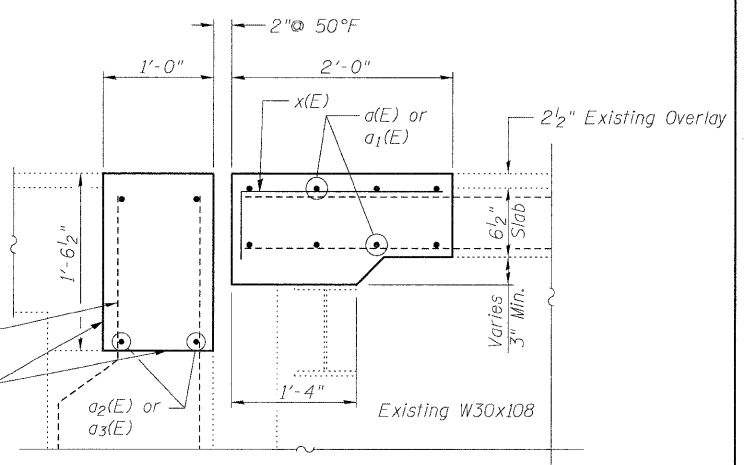
STATE OF ILLINOIS
DEPARTMENT OF TRANSPORTATION



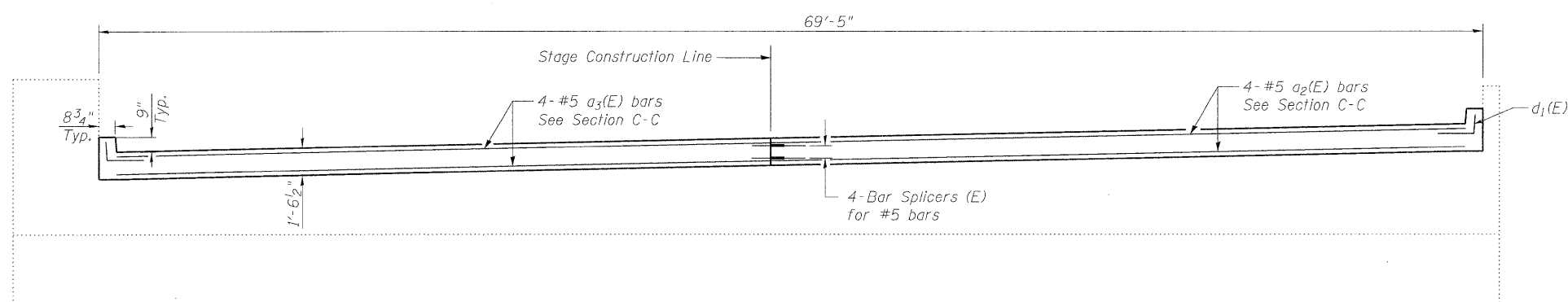
SECTION A-A

Existing reinforcement bars in parapet to remain in place, typ.

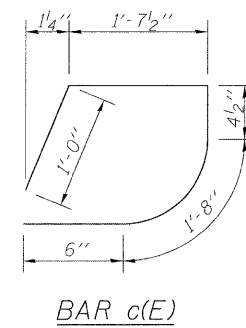
Existing reinforcement bars to remain in place, typ.



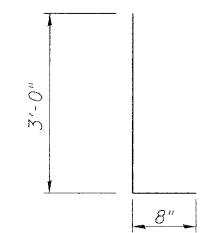
SECTION C-C
(Dimensions at Rt. L's)



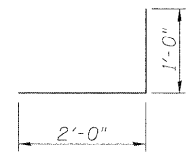
SECTION B-B



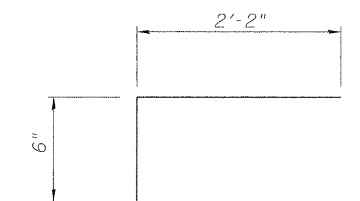
BAR c(E)



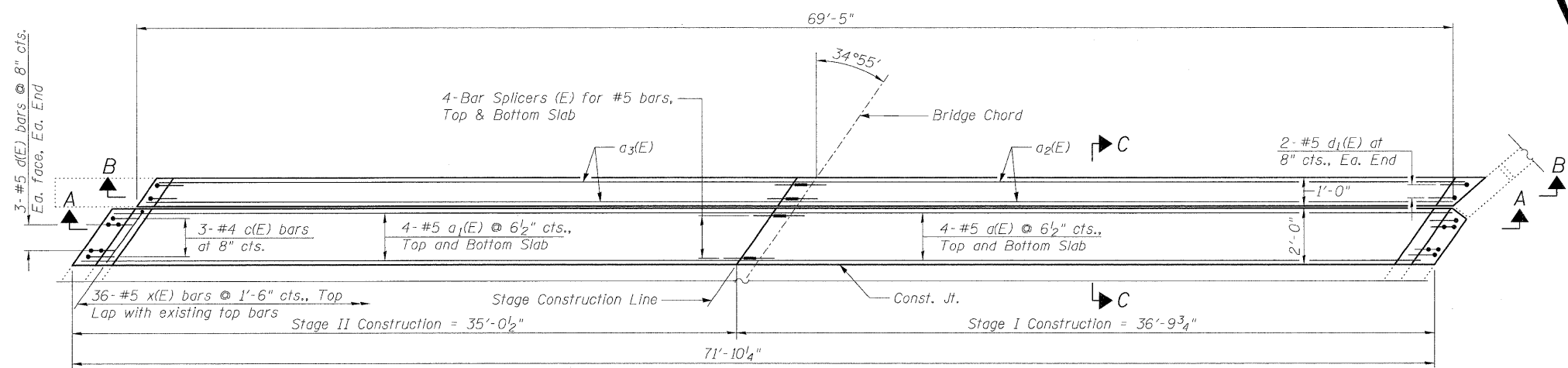
BAR d(E)



BAR d1(E)



BAR x(E)



PLAN

(South abutment shown, north abutment mirrored about Bridge Chord)

BILL OF MATERIAL

Bar	No.	Size	Length	Shape
a(E)	16	#5	35'-11"	—
a1(E)	16	#5	34'-2"	—
a2(E)	8	#5	35'-4"	—
a3(E)	8	#5	33'-6"	—
c(E)	12	#4	5'-2"	D
d(E)	24	#5	3'-8"	J
d1(E)	8	#5	3'-0"	J
x(E)	72	#5	2'-8"	L
Concrete Superstructure			Cu. Yd.	19.8
Reinforcement Bars, Epoxy Coated			Pound	2090

CONCRETE DETAILS
STRUCTURE NO. 016-1120

Lin Engineering, Ltd.
Consulting Engineers
Chatham, Illinois

Designed By: KMH
Checked By: MTH
Date: 12/2009

Drawn By: KMH
File: 016-1120.dgn

SHEET NO. 5
8 SHEETS

F.A.I. RTE.	SECTION	COUNTY	TOTAL SHEETS	SHEET NO.
290	(531-3.1,0305-302K)RS-5	COOK	314	220
FED. ROAD DIST. NO. _ ILLINOIS FED. AID PROJECT			CONTRACT NO. 60138	