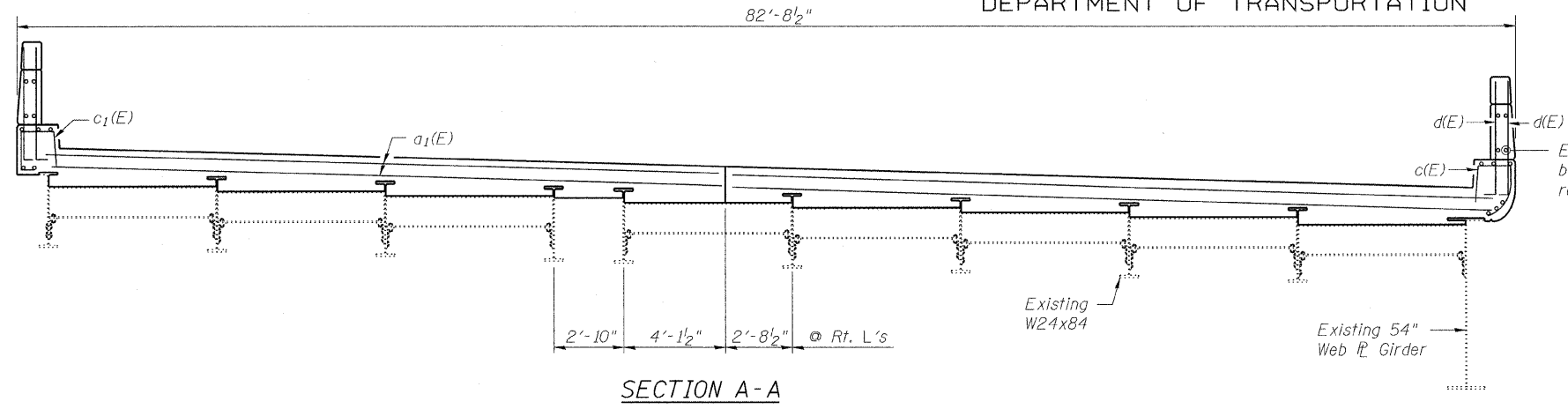
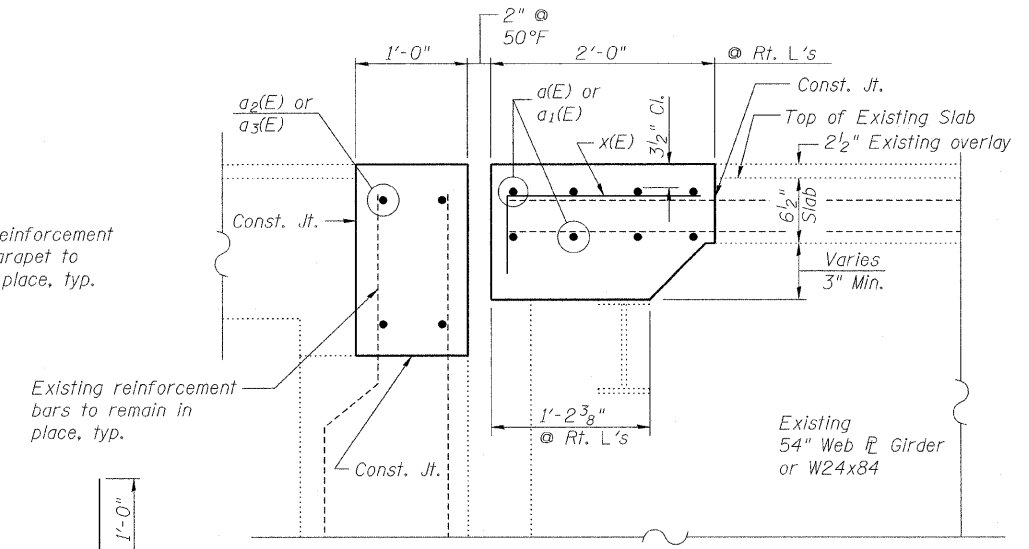


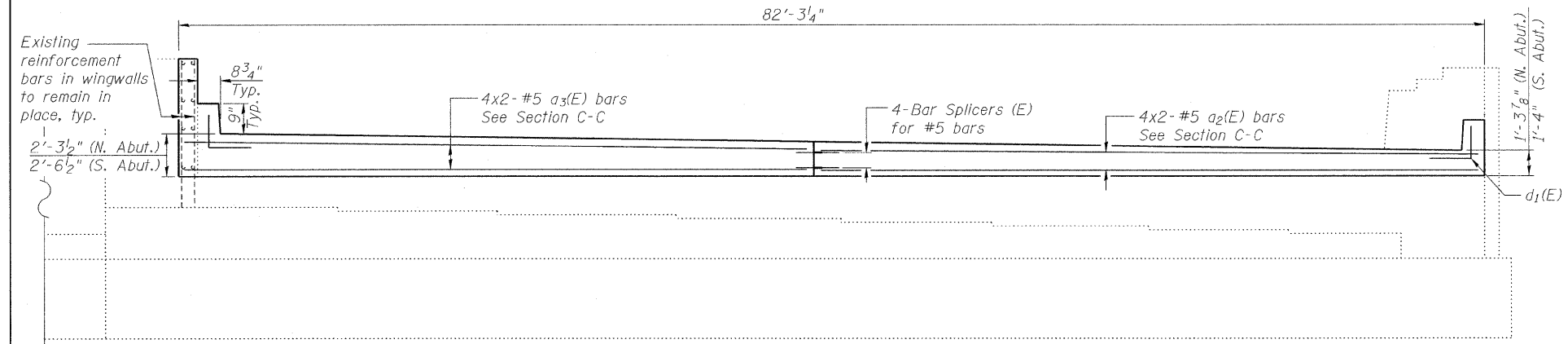
STATE OF ILLINOIS
DEPARTMENT OF TRANSPORTATION



SECTION A-A

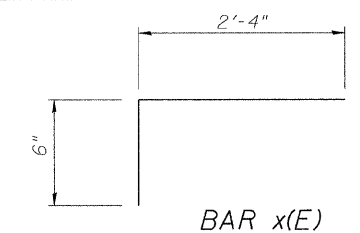


SECTION C-C



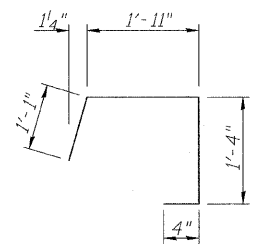
SECTION B-B

BAR d1(E)

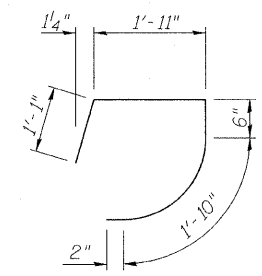


BAR x(E)

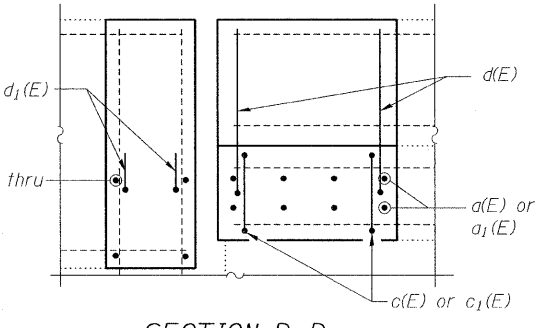
BAR d(E)



BAR c1(E)



BAR c(E)

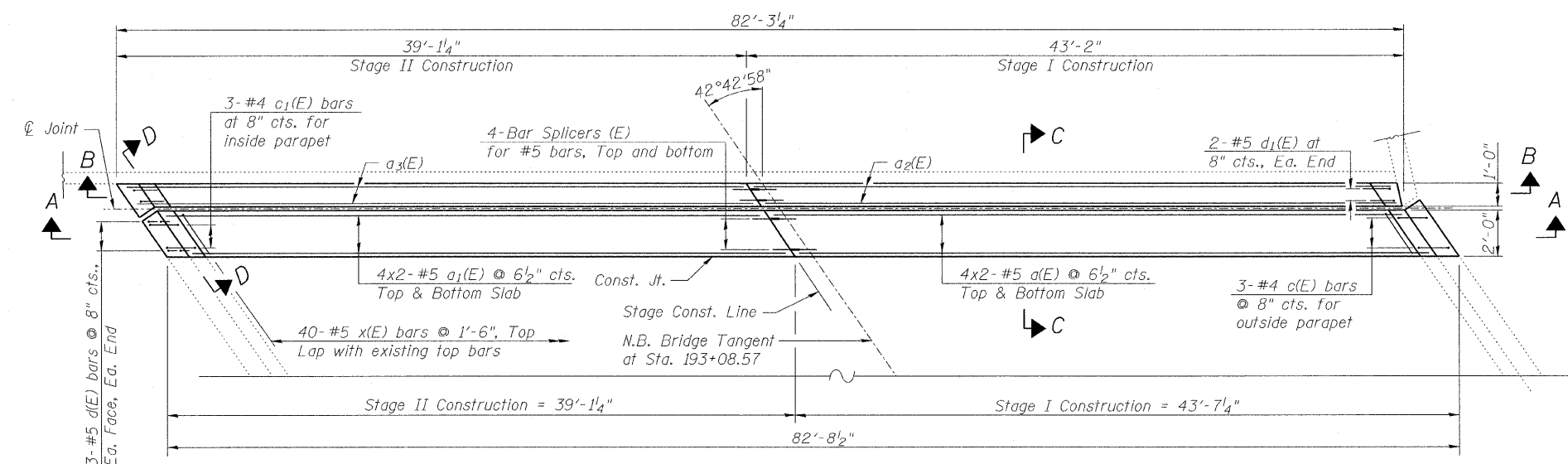


SECTION D-D

BILL OF MATERIAL

Bar	No.	Size	Length	Shape
a(E)	32	#5	23'-0"	—
a1(E)	32	#5	20'-8"	—
a2(E)	16	#5	22'-6"	—
a3(E)	16	#5	20'-10"	—
c(E)	6	#4	5'-6"	⌋
c1(E)	6	#4	4'-8"	⌋
d(E)	24	#5	3'-8"	L
d1(E)	8	#5	3'-0"	└
x(E)	80	#5	2'-10"	┌
Reinforcement Bars, Epoxy Coated			Pound	2580
Concrete Superstructure			Cu. Yd.	24.9

Bars indicated thus 4x2-#5 etc. indicates 4 lines of bars with 2 lengths per line.



PLAN

(North abutment shown, south abutment mirrored about N.B. bridge tangent)

MINIMUM BAR LAP
#5 bar = 2'-7"

E LIN ENGINEERING, LTD.
Consulting Engineers
Chatham, Illinois

SHEET NO. 6
9 SHEETS

F.A.I. RTE.	SECTION	COUNTY	TOTAL SHEETS	SHEET NO.
290	(531-3.1,0305-302)RS-5	COOK	314	219
CONTRACT NO. 60138				
FED. ROAD DIST. NO. _ ILLINOIS FED. AID PROJECT				

Designed By: ESH
Checked By: MTH
Date: 12/2009
File: 016-0376.dgn