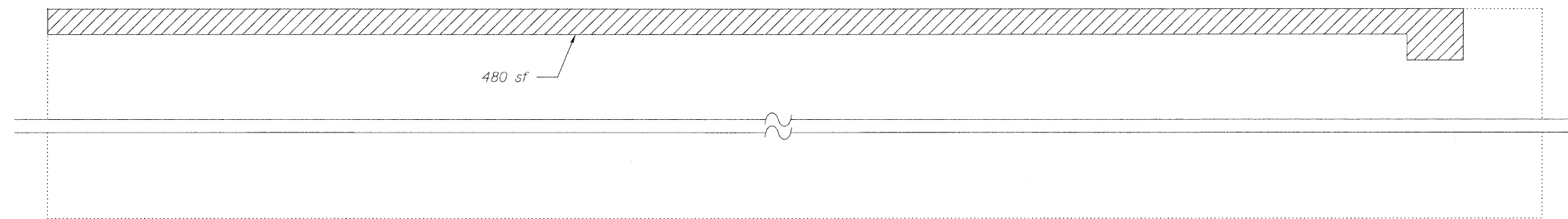


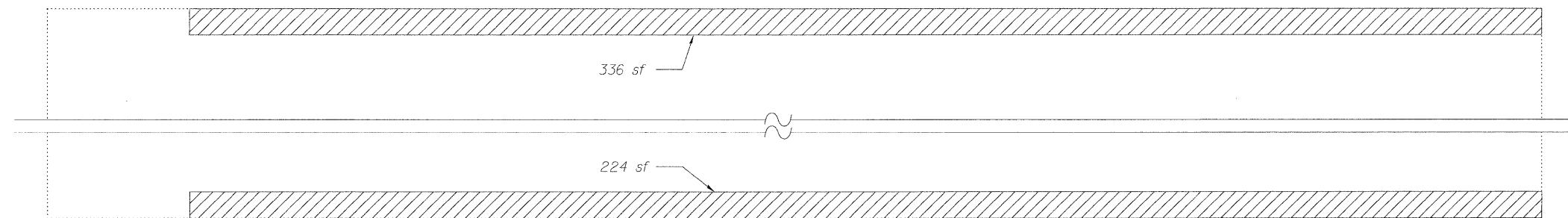
STATE OF ILLINOIS  
DEPARTMENT OF TRANSPORTATION



NORTH ABUTMENT ELEVATION  
(Looking North)



NORTH SLOPE WALL PLAN



SOUTH SLOPE WALL PLAN



LEGEND

- Indicates Slope Wall Removal and Slope Wall 4 Inch
- Indicates Structural Repair of Concrete (Depth Equal To or Less Than 5 in.)
- sf Square Feet

BILL OF MATERIAL

Item	Unit	Total
Slope Wall Removal	Sq. Yd.	116
Slope Wall 4 Inch	Sq. Yd.	116
Structural Repair of Concrete (Depth Equal To or Less Than 5 in.)	Sq. Ft.	24

*Note:*  
Slopedwall shall be reinforced with welded wire fabric, 6"x 6" - W4.0 x W4.0, weighing 58 lbs. per 100 sq. ft.  
Existing reinforcement shall be cleaned and incorporated into the new construction. Cost included with Slope Wall Removal.  
Existing and new welded wire fabric must be lapped at least 6".  
Repair of the existing abutment and slope walls shall include but may not be limited to the areas shown. The actual areas to be repaired will be determined by the Engineer at the time of construction.

SUBSTRUCTURE REPAIR  
STRUCTURE NO. 016-0376

 <b>LIN ENGINEERING, LTD.</b> Consulting Engineers Chatham, Illinois	SHEET NO. 7	F.A.I. RTE.	SECTION	COUNTY	TOTAL SHEETS	SHEET NO.
	9 SHEETS	290	(531-3.1,0305-302K)RS-5	COOK	314	230
Designed By: ESH Date: 12/2009		Checked By: MTH File: 016-0376.dgn		Drewn By: ESH		FED. ROAD DIST. NO. _ ILLINOIS FED. AID PROJECT
CONTRACT NO. 60138						